

COVID-19 RESOURCES FOR STUDENTS



DIVISION OF STUDENT AFFAIRS



STUDENT AFFAIRS RESOURCES

All departments in the Division of Student Affairs are working remotely to serve students.

A full list can be accessed here: [CLICK HERE FOR LINK](#)

Our most requested and accessed departments and services are listed below. Please note that when contacting any of our departments you may be connected to voicemail.

Please leave a detailed message, and your call will be returned.

STUDENT AFFAIRS DIVISION OFFICE

www.csulb.edu/students
(562) 985-5587

BASIC NEEDS

www.csulb.edu/basicneeds
(562) 985-2038
supportingstudents@csulb.edu

BOB MURPHY ACCESS CENTER (BMAC)

www.csulb.edu/bmac
(562) 985-5401
bmac@csulb.edu

CALWORKS PROGRAM

wgec@csulb.edu
(562) 985-8576

COUNSELING & PSYCHOLOGICAL SERVICES (CAPS)

www.csulb.edu/caps
(562) 985-4001

DEAN OF STUDENTS OFFICE

www.csulb.edu/studentdean
(562) 985-8670
studentdean@csulb.edu

DREAM SUCCESS CENTER

www.csulb.edu/dream
(562) 985-5869
dream@csulb.edu

HOUSING & RESIDENTIAL LIFE

www.csulb.edu/housing
(562) 985-4187
housing@csulb.edu

STUDENT HEALTH SERVICES

www.csulb.edu/shs
(562) 985-4771
wellness@csulb.edu

TRIO STUDENT SUPPORT SERVICES (SSS) PROGRAM

www.csulb.edu/sssp
(562) 985-2185
sssp@csulb.edu

UNIVERSITY OUTREACH AND SCHOOL RELATIONS

www.csulb.edu/uosr
(562) 985-5358
outreach@csulb.edu





HEALTH & WELLNESS RESOURCES

CALIFORNIA DEPARTMENT OF PUBLIC HEALTH

cdph.ca.gov/covid19
Daily COVID-19 updates

CALIFORNIA PEER-RUN WARM LINE

www.mentalhealthsf.org/peer-run-warmline/
Non-emergency resource for anyone in California seeking emotional support via phone and webchat

CENTERS FOR DISEASE CONTROL & PREVENTION (CDC)

www.cdc.gov
Information on identifying COVID-19 symptoms and how to protect yourself

CENTER FOR THE STUDY OF TRAUMATIC STRESS

[Click Here](#)
Fact sheets and other resources to support the health and well-being of communities impacted by COVID-19

COVERED CALIFORNIA/ MEDI-CAL

www.coveredca.com
Offers information to receive Medi-Cal and search for other health care options

DISASTER DISTRESS HELPLINE

www.samhsa.gov/find-help/disaster-distress-helpline
(800) 985-5990
Free, 24/7, 365-day-a-year, national hotline dedicated to providing immediate crisis counseling for people who are experiencing emotional distress related to any natural or human-caused disaster

LA COUNTY DEPARTMENT OF MENTAL HEALTH

dmh.lacounty.gov/covid-19-information/
Materials to address mental health & wellbeing needs and concerns

LA COUNTY DEPARTMENT OF PUBLIC HEALTH

www.publichealth.lacounty.gov
Information on COVID-19 in LA County

LONG BEACH DEPARTMENT OF PUBLIC HEALTH

www.longbeach.gov/health
Information on COVID-19 in the city of Long Beach

MENTAL HEALTH AMERICA

mhanational.org/covid19
Mental health information and resources

NATIONAL ALLIANCE ON MENTAL ILLNESS

namila.org/
Updates, tips, and resources for coping with COVID-19

SUBSTANCE ABUSE & MENTAL HEALTH SERVICES ADMINISTRATION

www.samhsa.gov/find-help/national-helpline
(800) 662-HELP (4357)

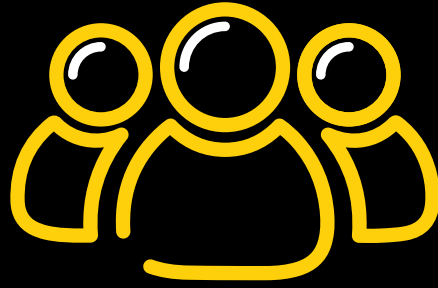
Free, confidential, 24/7, 365-day-a-year treatment referral and information service (in English and Spanish) for individuals and families facing mental and/or substance use disorders

WORLD HEALTH ORGANIZATION

www.who.int/emergencies/dis-eases/novel-coronavirus-2019

Advice, guidance, and resources related to COVID-19





FOOD RESOURCES

DREAM CENTER

www.dreamcenter.org/relief
(562) 283-1400

Mobile food banks
located in Los Angeles

FOOD FINDERS

www.foodfinders.org
(562) 283-1400

Food Finders is a 501 c3 food rescue organization connecting donated perishable food to hundreds of nonprofit pantries and shelters throughout Southern California

LAUSD GRAB n GO FOOD CENTERS

[https://achieve.lausd.net/
Page/16904](https://achieve.lausd.net/Page/16904)

Includes LAUSD students & their parents - adults do not need a bar code

USDA NATIONAL HUNGER HOTLINE

www.fns.usda.gov

English: (866) 3-HUNGRY (6479)
Spanish: (877) 8-HAMBRE (6273)
Text: #97779

Resources for people of all ages

WIC (WOMEN, INFANTS, & CHILDREN)

m.wic.ca.gov

(888) 942-2229

WIC services are available to all eligible families affected by COVID-19

HOLY REDEEMER LUTHERAN CHURCH

(562) 867-0714
BELLFLOWER

SALVATION ARMY BELLFLOWER

(562) 804-0808
BELLFLOWER

ST. BERNARD'S FOOD PANTRY/PARISH

(562) 867-2337
BELLFLOWER

LONG BEACH COMMUNITY TABLE

(562) 548-0774
BELLFLOWER

CORONA SETTLEMENT HOUSE

(951) 737-3504
CORONA

ST. IRENAEUS H.O.P.E.

(714) 826-0760
CYPRESS



CALIFORNIA STATE UNIVERSITY LONG BEACH

DESERT REIGN

(562) 861-6011
DOWNEY

FOOD HELP

(562) 862-2438
DOWNEY

PATHWAYS OF HOPE

(714) 680-3691
FULLERTON

ST. ANDREW'S CHURCH

(714) 870-4350
FULLERTON

WILSHIRE AVE COMMUNITY CHURCH

(714) 526-2265
FULLERTON

CHRIST CATHEDRAL COMMUNITY OUTREACH

(714) 282-3097
GARDEN GROVE

FIRST PRESBYTERIAN CHURCH OF GG

(714) 534-2269
GARDEN GROVE

GARDEN GROVE FRIENDS CHURCH

(714) 539-7735
GARDEN GROVE

LUTHERAN SOCIAL SERVICES

(714) 534-6450
GARDEN GROVE

ST. COLUMBAN-ST. VINCENT DE PAUL

(714) 539-9133
GARDEN GROVE

INTERNATIONAL FAMILIES ASSOCIATION

(818) 770-0779
GLENDALE

SALVATION ARMY STILLMAN SAWYER CENTER

(310) 835-1986
HARBOR CITY

HAWAIIAN GARDENS FOOD BANK

(562) 425-4001
HAWAIIAN GARDENS

FOOD PANTRY LAX

(310) 677-5597
INGLEWOOD

SOUTH COUNTY OUTREACH

(949) 380-8144
IRVINE

BROKEN LOAF FOOD PANTRY @LAKEWOOD FIRST UNITED METHODIST

(562) 425-1219
LAKEWOOD

ANTELOPE VALLEY PARTNERS FOR HEALTH

(661) 942-4719
LANCASTER

ST. MARGARET MARY ROMAN CATHOLIC CHURCH

(310) 326-3364
LOMITA

AIDS FOOD STORE OF LONG BEACH (MUST REGISTER)

(562) 676-4554
LONG BEACH

ARMS REACHING OUT TO THE COMMUNITY (MUST CALL)

(562) 528-9385
LONG BEACH

BEACON FOR HIM

(562) 537-6327
LONG BEACH



CALIFORNIA STATE UNIVERSITY LONG BEACH

CHRISTIAN OUTREACH IN ACTION

(562) 432-1440
LONG BEACH

LONG BEACH RESCUE MISSION

(562) 591-1292
LONG BEACH

NEW GENERATIONS

(562) 363-6457
LONG BEACH

PARKCREST CHRISTIAN CHURCH

(562) 421-9374
LONG BEACH

SALVATION ARMY CITADEL

(562) 426-7637
LONG BEACH

SKIDROW ADVOCACY GROUP

(562) 304-5002
LONG BEACH

ST. MARY MEDICAL CENTER CARE PROGRAM CENTER

(562) 624-4996
LONG BEACH

URBAN COMMUNITY OUTREACH - DROP-IN CENTER

(562) 582-1000
LONG BEACH

WOMEN IN ACTION REACHING OUT

(562) 253-8078
LONG BEACH

CATHOLIC CHARITIES- EL SANTO NINO

(213) 318-5702
LOS ANGELES

DOWNTOWN WOMEN'S CENTER

(213) 980-0600
LOS ANGELES

FAITH IN CHRIST MINISTRIES

(323) 291-9636
LOS ANGELES

FRED JORDAN MISSION

(626) 915-1981
LOS ANGELES

HOLLYWOOD FOOD COALITION

(323) 462-2032
LOS ANGELES

LOS ANGELES REGIONAL FOOD BANK

(323) 234-3030
LOS ANGELES

MIDNIGHT MISSION

(213) 624-9258
LOS ANGELES

PRAISE CHAPEL FLORENCE COMMUNITY CHURCH

(626) 483-5728
LOS ANGELES

HELP THE CHILDREN

(323) 980-9870
MONTEBELLO

SALVATION ARMY ONTARIO

(909) 986-6748
ONTARIO

SALVATION ARMY PASADENA

(626) 773-4400
PASADENA

ST. LAWRENCE MARTYR CHURCH

(310) 540-0329
REDONDO BEACH



CALIFORNIA STATE UNIVERSITY **LONG BEACH**

**HELPING HANDS
PANTRY**

(909) 796-4222
SAN BERNARDINO

**SALVATION ARMY
SAN PEDRO**

(310) 832-7228
SAN PEDRO

**TOBERMAN
NEIGHBORHOOD CENTER**

(310) 832-1145 x10
SAN PEDRO

**ANNIE MAE TRIPP SOUTHWEST
COMMUNITY CENTER**

(714) 547-4073
SANTA ANA

**SALVATION ARMY
SIMI VALLEY**

(805) 527-1070
SIMI VALLEY

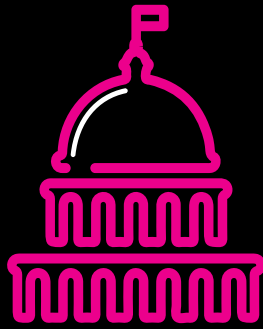
**ST. PETER AND PAUL'S
POVERTY PROGRAM**

(310) 952-0144
WILMINGTON

**BEACON LIGHT
MISSION**

(310) 830-7063
WILMINGTON





LOCAL & STATE RESOURCES

LOCAL

**COUNTY OF RIVERSIDE
DEPARTMENT OF
PUBLIC SOCIAL SERVICES**

dpss.co.riverside.ca.us/

**LA COUNTY DEPARTMENT
OF PUBLIC
SOCIAL SERVICES**

dpss.lacounty.gov

**LEGAL AID FOUNDATION OF
LOS ANGELES**

lafla.org/

(800) 399-4529

Free legal assistance, including tenant protections and immigration support

OC LINKS INFORMATION AND REFERRAL LINE

www.ochealthinfo.com/bhs/about/nit/oclinks/

(855) 625-4657

Provides support for anyone seeking information or linkage to any of the Health Care Agency's Behavioral Health Services (mental health, alcohol and drug inpatient and outpatient, crisis programs, and prevention and early intervention services)

**ORANGE COUNTY
SOCIAL SERVICES AGENCY**

ssa.ocgov.com/

STATE

2-1-1 CA

www.211ca.org/

2-1-1 is a free information and referral service that makes it easy to find food, housing, job training, after-school programs and much more.

**CALIFORNIA
CORONAVIRUS
RESPONSE**

covid19.ca.gov/

Information and resources on numerous topics for various communities in response to COVID-19

MEDI-CAL

[Click Here](#)

Public health insurance program which provides needed health care services for low-income individuals

**STATE OF CALIFORNIA
EMPLOYMENT DEVELOPMENT
DEPARTMENT**

[Click Here](#)

Unemployment and disability benefits, information about available program and services





UNDOCUMENTED & IMMIGRATION RESOURCES

IMMIGRANTS RISING

[Click Here](#)

Immigrants Rising is committed to serving undocumented communities

INFORMED IMMIGRANT

www.informedimmigrant.com/guides/coronavirus/

Dedicated to increasing access to resources and knowledge for the undocumented community

ONE FAIR WAGE EMERGENCY FUND

ofwemergencyfund.org/help

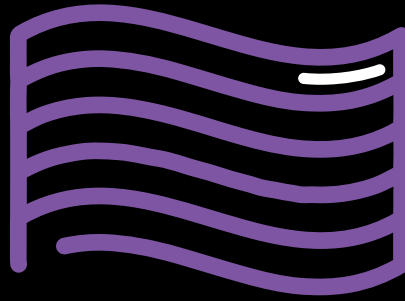
Assistance for service workers

VIETRISE

www.vietrise.org/immigrantrelieffund/

Immigrant Community Relief Fund will provide cash assistance of \$800 per individual for undocumented and impacted Vietnamese immigrants in Orange County who are experiencing financial hardship due to the COVID-19 pandemic.





LGBTQIA+ RESOURCES

APLA HEALTH

aplahealth.org/

(213) 201-1600

Services focus on LGBTQ+ individuals and low-cost medical care

LOS ANGELES LGBT CENTER (MULTIPLE LOCATIONS)

lalgbtcenter.org/health-services

The Los Angeles LGBT Center is one of the largest and most experienced providers of LGBT health and mental healthcare

THE LGBTQ CENTER OF LONG BEACH

www.centerlb.org/

(562) 434-4455

Provides health, mental health, legal, and educational services

LGBT NATIONAL HOTLINE

www.glbthotline.org/hotline

(888) 843-4564

A safe space that is anonymous and confidential

POINT OF PRIDE EMERGENCY FUND

[www.pointofpride.org/
covid-19-emergency-fund/](http://www.pointofpride.org/covid-19-emergency-fund/)

Point of Pride has established the COVID-19 Emergency Fund to offset the unexpected costs and hardships that have impacted our trans community in response to the COVID-19 crisis.

TRANSLIFELINE

www.translifeline.org

(877) 565-8860

Connects trans people to the community, support, and resources

THE TREVOR PROJECT

www.thetrevorproject.org/get-help-now/

(866) 488-7386

Mental health, counseling, peer support, and crisis services available 24/7





CHILDCARE RESOURCES

GENERAL RESOURCES

CHILDREN'S HOME SOCIETY

[CLICK HERE](#)

LONG BEACH | ORANGE COUNTY
SUTTER/YUBA | YOLO

CHILD CARE AWARE

[CLICK HERE](#)

CHILD CARE RESOURCE & REFERRAL SERVICE

[CLICK HERE](#)

N. LOS ANGELES | SAN BERNARDINO

CONNECTIONS FOR CHILDREN

[CLICK HERE](#)

WEST LA

KERN COUNTY

[CLICK HERE](#)

BAKERSFIELD

MEXICAN AMERICAN OPPORTUNITY FOUNDATION

[CLICK HERE](#)

DOWNEY

OPTIONS FOR LEARNING

[CLICK HERE](#)

LOS ANGELES

PALS (PARK ALTERNATIVE LEARNING SITES)

www.lakewoodcity.org/eCatalog

(562) 866-9771 x2408

LAKESWOOD

PATHWAYS

[CLICK HERE](#)

LOS ANGELES



CALIFORNIA STATE UNIVERSITY LONG BEACH

POMONA CHILD CARE INFORMATION SERVICE

[CLICK HERE](#)

ONTARIO | WEST COVINA

RIVERSIDE COUNTY

[CLICK HERE](#)

VENTURA COUNTY

www.cdrv.org/

Y CAMP ACADEMY

LBymca.org

(562) 423-0491

LONG BEACH

RESOURCES FOR ESSENTIAL WORKERS

CHILDCARE RESOURCE CENTER

[CLICK HERE](#)

(866) 67-4KIDS

N. LOS ANGELES | SAN BERNARDINO

CHILDREN'S HOME SOCIETY

[CLICK HERE](#)

LONG BEACH | ORANGE COUNTY
SUTTER/YUBA | YOLO

CRYSTAL STAIRS

www.crystalstairs.org

(888) KIDS-247

CSULB'S PREGNANT & PARENTING STUDENT

[CLICK HERE](#)

(949) 490.9192

WEECARE

[CLICK HERE](#)

(323) 421-7479

WORK LB

www.CALFLEXI.com

(562) 294-4500

LONG BEACH

YMCA

www.ymcaoc.org

LONG BEACH | ORANGE
COUNTY

