

# Student Toolkit for Fall 2021

*Preparing for our next normal*

Dear Students,

It is hard to believe that a year has passed since the pandemic forced all of us to convert classes to alternative modes of instruction. It's time to look ahead to a hopeful tomorrow as CSULB discusses "Reuniting the Beach." As President Conoley recently shared, we have been adjusting and preparing plans for Fall 2021 based on state and local public health guidelines combined with the capacities of our campus classrooms. Planning remains fluid, but we wanted to give you a glimpse of our planning and procedures so you could best prepare.

The goal is to bring back to campus as many of you as possible, while adhering to health and safety guidelines. **As President Conoley mentioned in her letter, our planning target for fall semester is to offer approximately 45-50% of our Fall 2021 course sections either fully in-person or hybrid** (partially in-person) with Spring 2022 seeing 100% of pre-pandemic in-person course offerings resuming on campus. I know mixed messages about what is possible for fall have swirled around, but this decision came from projected local health mandates as well as public health guidelines for universities.

There is no easy explanation of what this means for each individual student. Depending on your major and your current progress toward graduation, it could mean a fully online schedule or one that is both in-person and online. As we continue to plan our fall semester, included below are a few ways you can prepare for what's to come.

With appreciation,

Brian Jersky, Ph.D.  
*Provost  
Senior Vice President for Academic Affairs*

---

PREPARING FOR FALL 2021:  
*Course Registration & Advising Resources*

Keep your eye out for important dates for Spring 2021 and Fall 2021:

- **April 5:** Fall 2021 registration begins
- **April 16:** Withdrawal deadline From all classes (with instructor /department approval)
- **April 17- May 7:** Catastrophic withdrawals (last three weeks of class)
- **August 23:** First day of instruction
- **September 6:** Deadline to drop a class (without a W)
- **December 10:** Catastrophic withdrawal deadline

## Key Dates & Deadlines



[Find more key dates and deadlines here.](#)

[The Fall 2021 Schedule of Classes](#) is now available. Courses that are listed as online, will remain online (they will not change to in person). Courses that are hybrid or in person are slated to be on campus. These could change to online if the status of COVID becomes worse in our community. Part-time enrollment is an option for those who wish to continue making progress towards their degree. If coming to campus will not be possible for you, please consult with your academic advisor regarding your class schedule.

## Fall 2021 Schedule of Classes



## UCUA Center Advising Resources



Have a question about your degree objective? Visit the [University Center for Undergraduate Advising \(UCUA\)](#) for help in planning your path to graduation.

Here, you'll find [undergraduate resources](#) such as Major Specific Requirements, the University Catalog, Beach Road Map, and more.

If you have questions on courses, requirements for your major, or other major specific questions, [visit your College Advising Center for advising help.](#)

## College Advising Centers



## AMI Terms & Definitions



Do you know what an asynchronous course is?

Review the [Alternative mode of instruction \(AMI\) terms and definitions](#) as you register for your Fall courses.

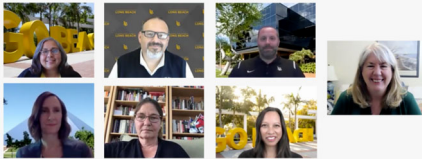
[How Can Advising Impact My Path to Graduation?](#)

In this video, Dr. Kerry Johnson and Dr. Paul Henderson discuss advising resources on campus, such as the University Center for Undergraduate Advising (UCUA), and how a lack of advising can impact a student's path to graduation.

#### HOW ADVISING CAN HELP YOU ON THE PATH TO GRADUATION



#### Repopulation Efforts at CSULB: *Past, Present, & Future*



#### Fall Repopulation Efforts at CSULB:

In this video, Dr. Jody Cormack discusses with our campus repopulation team the ongoing efforts, their approach to repopulation, and how COVID-19 has changed our campus.

## SAFETY IS OUR PRIORITY:

### *Reviewing CSULB Safety Policies*

Our Department of Environmental Health and Safety (EHS) has developed specific protocols to prepare buildings for repopulation that include: flushing the building with fresh air, increasing the efficiency of filtration systems to meet or exceed public health guidelines, conducting enhanced cleaning followed by conducting enhanced disinfection of all rooms/spaces within the building. Social distancing is still required per current health protocols, but we anticipate that might change by fall.

#### COVID-19 Safety Policies



We require the proper wearing of face coverings. See the [face covering policy](#) at CSULB, as well as appropriate [social distancing](#) information.

#### Campus Pre-Entry Screening



All students coming onto campus must complete a [pre-entry health screening questionnaire](#) prior to their arrival.

## RESOURCES TO SUPPORT YOU:

### *Academic, Tech, Health & More*

We know that tutoring centers are important parts of your academic success. We have a number of virtual [advising and tutoring opportunities available](#) that we urge you to take advantage of, including those available on [Single-Sign on](#).

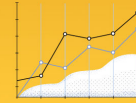
## Tutoring Resources



Our online research systems are vast, and our campus librarians are available to help. We offer a variety of [library and research resources](#) that are available to you.

During the Fall 2021 semester, the library will be open on a limited basis.

## Library & Research



## Technology Help



Technology Help – Our IT Help Desk is available to answer questions and offer support via [Single-Sign On](#).

Enrollment Services – While registering for classes can be stressful, we are here to help! [Stay up-to-date on changes in policy and find the forms you need from Enrollment Services](#).

## Enrollment Services Updates



## COVID-19 Vaccine at CSULB



The COVID Vaccine is available for CSULB Students.

[Learn more about vaccine rollout at CSULB here](#).

- [DSA Covid-19 Student Resource List](#)
- [Laptop/ Hotspot request form](#)
- [Academic, Basic Needs, and Counseling On-Campus resources](#)
- [CAPS Covid-19 Mental Health Resources](#)
- [DSA Resources for Undocumented Students](#)
- [CSULB Reuniting the Beach Page for COVID-19 Campus updates](#)

## Campus Resources



*Please note that it may be necessary to update these policies as new information regarding the best methods to contain the virus are received.*

*Be on the lookout for additional emails during the summer that will help you with navigating the demands of the semester, and updates on any changes that we need to make in our instructional delivery due to COVID-19.*



CALIFORNIA STATE UNIVERSITY  
**LONG BEACH**  
Academic Affairs

*1250 Bellflower Boulevard  
Long Beach, CA 90840*

## STAY CONNECTED

Facebook: @CSULBAcademicAffairs

Twitter: @Provost\_Jersky

Instagram: @Provost\_Jersky



[Visit our website](#)

California State University Long Beach | 1250 Bellflower Blvd., Long Beach, CA 90840

[Unsubscribe {recipient's email}](#).

[Update Profile](#) | [Customer Contact Data Notice](#)

Sent by provost@csulb.edu powered by



Try email marketing for free today!