

A dark grey circular logo with a white dashed border of arrows pointing outwards. The text "Data Fellows" is written in a white, cursive font across the center of the circle.

Data Fellows

A bright yellow banner with a slight 3D effect, positioned horizontally across the center of the slide.

CLA FINAL PRESENTATION

May 5, 2017

CLA Data Fellows



Beth Manke
Associate Dean



Bron Pellissier
ATLAS



Bill Pedersen
Department of Psychology



Kaitlyn Stormes
Institutional Research



San Bolkan
Department of Communication Studies



Kimberly Vervair
Dean's Office Staff

CLA Data Projects

1

ADDRESSING
UNIVERSITY-WIDE
QUESTIONS

How effective is
Early Start Writing?

- + IR
- + Chancellor's Office
- + English Department
- + Student Affairs
Assessment Center
- + IRB

2

ASSISTING
DEPARTMENTS
WITH DATA
PROJECTS

Economics Department -
What factors contribute
to retention & time to
degree?

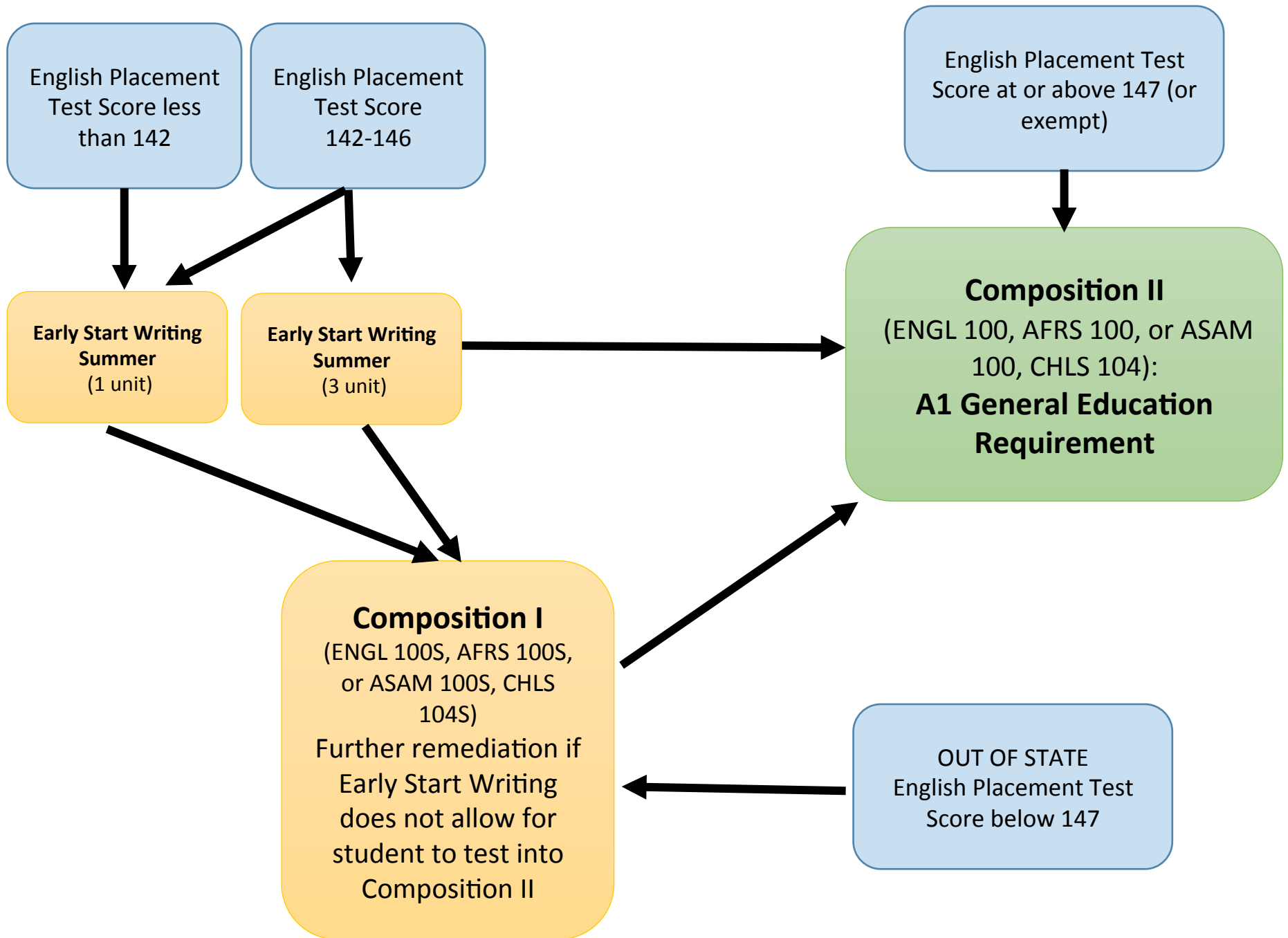
- + Economics Department
- + IR

3

GRADUATION 2025

What Promotes and
Impedes Graduation for
Cohort 2013?

- + CLA Department Chairs
- + CLA Data Team
- + IR
- + IRB



CLA Data Projects

1

ADDRESSING
UNIVERSITY-WIDE
QUESTIONS

How effective is
Early Start Writing?

- + IR
- + Chancellor's Office
- + English Department
- + Student Affairs
Assessment Center
- + IRB

2

ASSISTING
DEPARTMENTS
WITH DATA
PROJECTS

Economics Department -
What factors contribute
to retention & time to
degree?

- + Economics Department
- + IR

3

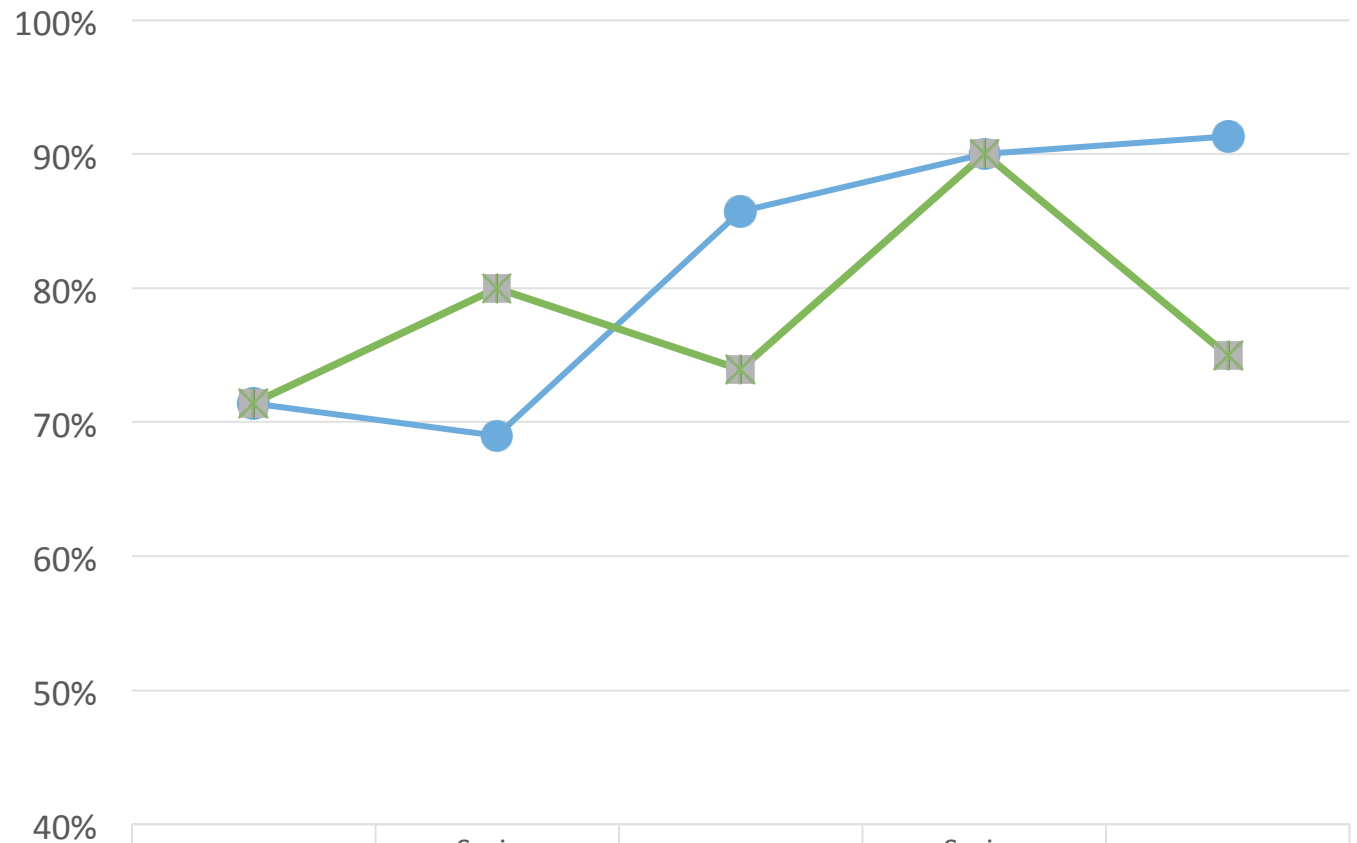
GRADUATION 2025

What Promotes and
Impedes Graduation for
Cohort 2013?

- + CLA Department Chairs
- + CLA Data Team
- + IR
- + IRB



Percent of Tutored Students Passing ECON 311 and 380



	Fall 2013	Spring 2014	Fall 2014	Spring 2015	Fall 2015
● % of Tutoring Students Passing 311	71%	69%	86%	90%	91%
✱ % of Tutoring Students Passing 380	71%	80%	74%	90%	75%

CLA Data Projects

1

ADDRESSING
UNIVERSITY-WIDE
QUESTIONS

How effective is
Early Start Writing?

- + IR
- + Chancellor's Office
- + English Department
- + Student Affairs
Assessment Center
- + IRB

2

ASSISTING
DEPARTMENTS
WITH DATA
PROJECTS

Economics Department -
What factors contribute
to retention & time to
degree?

- + Economics Department
- + IR

3

GRADUATION 2025

What Promotes and
Impedes Graduation for
Cohort 2013?

- + CLA Department Chairs
- + CLA Data Team
- + IR
- + IRB

Graduation 2025



FOCUS:

To gain a more in depth understanding of what facilitates and impedes 4-year graduation.

PROGRESSTODATE:

- Created a larger (6 person) CLA Data Team
- Designed a 3-phase data collection project:

Phase I- Online Survey

- ✓ Survey Development
- ✓ IRB

Phase II- Focus Groups

Phase III- Incorporation of IR Data



YOU'RE INVITED

CSULB ENTERING CLASS OF

FALL 2013

JOIN US FOR A FOCUS GROUP ABOUT
YOUR GRADUATION

CHOOSE A DATE & RSVP

MAY 2

TUESDAY

10:00AM

MAY 2

TUESDAY

4:00PM

MAY 4

THURSDAY

10:00AM

MAY 4

THURSDAY

4:00PM

MAY 6

SATURDAY

9:30AM

FIRST 50 STUDENTS TO RSVP
(FIRST COME FIRST SERVED)

GET A

\$25 GIFT CARD TO
amazon

F R E E

**FOOD &
DRINKS**

RSVP

TO DR. GWEN SHAFFER
GWEN.SHAFER@CSULB.EDU
MUST RSVP BY APRIL 30TH, 2017

Data Fellows Benefits

- 1** Networking
- 2** Better understanding of the different silos of data
- 3** Appreciation of the complexity of the University system

