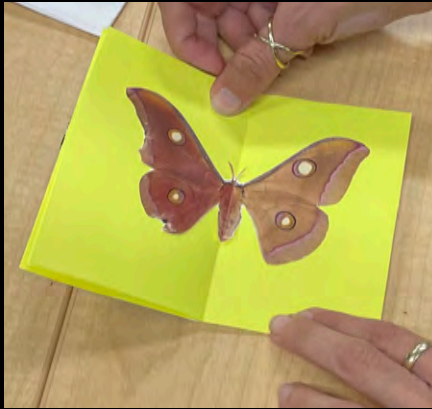


SPRING HAS OFFICIALLY SPRUNG!

From the busiest **bees** to the most social **butterflies**, The Faculty Center satisfies!

Images from February's Zine-Making Workshop (facilitated by Sharla Berry)



HOW TO MAKE A ZINE

- 1. DECIDE ON A FOCUS**
What is your zine about? Is the purpose to raise awareness about a cause? Share your sense of humor or love of music? Maybe it's a punline, something that is about your personal experiences with love, mental health, or life in general.
- 2. SELECT A FORMAT**
What size and shape will it be? I've played with mini-zines and basic booklets, but you can do what works for you! Maybe you want something small and portable that can be easily distributed, or maybe you want something larger, like a little book.
- 3. IDENTIFY WHO YOUR ZINE IS FOR**
Do you want to reach a particular community? Or, do you want to make something just for you? Either way is valid!
- 4. USE FOUND MATERIALS**
Do you have any old magazines at your house? What about random flyers and brochures? Any bit of scrap or ephemera can be used for your zine. Out of materials? Download pics from pinterest and print them out!
- 5. HAVE FUN**
Don't overthink it! Embrace your inner third grader and go for it!

THIS HANDOUT WAS MADE WITH LOVE BY SHARLA BERRY, PHD

How to make your own instant book

Grab an A4 or A3 sheet of paper

Fold in half, then half again

Fold the sides into the centre

Cut along from the middle

like this

Fold in half then open up at the out in the centre

Push it together until it makes a book

How you have an 8 page instant book!

Fill it with ideas for creative things you'd like to do, see and make happen in Knightly Library

FACULTY CENTER PROGRAMS PROVIDE THE PERFECT BALANCE OF BUSINESS & PLEASURE...

FEBRUARY-MARCH

««« HIGHLIGHTS

If you don't believe us, come see for yourself!



CSULB faculty love learning new [to them] words...but we love our students even more! **"Adopting 'Servicingness' in the Classroom"** fit the bill on both fronts. Faculty listened intently as **Michael Aranda** (Associate Director of Hispanic Serving Institute Initiatives) shared the importance of adopting servicingness strategies in our classes.

Participants in **"Zines as Creative Healing"** got personal and political! **Sharla Berry's** (Department of Education Leadership & Interim Director, Center for Evaluation and Educational Effectiveness) hands-on approach could bring out the inner artist and activist in just about anyone!



As an R2 institution, CSULB is committed to research, but research ain't free! Faculty who attended **"Finding and Winning Research Funding"** aren't sweating it though! Any research-related financial woes will disappear with the pro-tips shared by **Karl Freels** (ORED Senior Grant Development Specialist).

WHETHER YOU'RE ITCHING TO EXPRESS YOUR ARTISTIC SIDE
OR NOT QUITE SURE IF YOU HAVE ONE...



JOIN US FOR

bookish brushstrokes

A FORE-EDGE PAINTING EXPERIENCE

Sponsored by The University Library & The Faculty Center

Come explore the fascinating tradition of fore-edge painting, an art form in which images are delicately painted on the edges of book pages. Participants will experiment with guided fore-edge painting techniques, creating their own artwork to take home!

NO ARTISTIC BACKGROUND REQUIRED

LUNCH, DESSERT, & ALL SUPPLIES PROVIDED!

WEDNESDAY, APRIL 8

12:00 – 2:00PM

SPECIAL COLLECTIONS, LIB-300



**REGISTER
HERE!**

facilitated by

HEATHER STEELE-GAJEWSKI
UNIVERSITY ARCHIVIST

MICHELLE DEMARS
ASSOCIATE LIBRARIAN

CULTURAL TAXATION AND FACULTY: PROGRESS, ACCOUNTABILITY, AND PATHWAYS FORWARD

WORKSHOP

Faculty from marginalized communities are often called upon—formally and informally—to carry added responsibilities tied to service, representation, mentoring, and emotional labor. This session introduces the concept of identity-based cultural taxation and considers how it operates within campus life. Drawing on findings from a participatory research project and a CSULB faculty and staff summit, we will outline seven core dimensions of this experience and explore actionable steps for faculty and institutional leaders when these dynamics occur.



***“Rarely, if ever, are any of us healed in
isolation. Healing is an act of communion.”***

bell hooks

Friday, April 10

10-11:30am

via Zoom

REGISTER HERE

Contact: kellie.walters@csulb.edu

In partnership with the Faculty Center



AN IMPORTANT PSA FOR ALL CSULB FACULTY:



Up to 20% of our students identify as neurodivergent and that number is growing!

So how can faculty foster supportive learning environments that promote access and dignity while maintaining rigorous academic standards?

join us for this interactive workshop

Navigating Neurodiversity in the Classroom

Workshop participants will:

- gain a foundational understanding of neurodivergence and its relevance in higher-education,
- learn about common signals of neurodivergent experiences,
- work on reframing neurodivergence via a strengths-based model,
- practice strategies for communication, de-escalation, and conflict resolution.

Tuesday, April 14

12:00 – 1:45pm

AS-125

LUNCH INCLUDED

facilitated by

Aisha Pridgen

Academic Conflict Resolution Manager

Faculty Affairs

Mary Nguyen

Director

Bob Murphy Access Center

**REGISTER
HERE!**





WONDERING WHERE AI IS HEADED AND
HOW YOU CAN KEEP UP?

LET'S GAZE INTO THE PROVERBIAL CRYSTAL
BALL AND SPECULATE ON THE FUTURE OF
AI IN ACADEMIA!

The Faculty Center & Academic Technology Services (ATS) invite ALL FACULTY to attend the second installment in our Artificial Intelligence series

Faculty Perspectives on AI

Artificial Intelligence in the *FUTURE*

Tuesday, April 21, 12:00pm – 2:00pm

ATS Training Room, AS-120B or via Zoom

LUNCH INCLUDED

AI as a Pedagogical Partner

Yen-Ju Lin

Lecturer, School of Art

Ethnic Studies Perspectives on AI

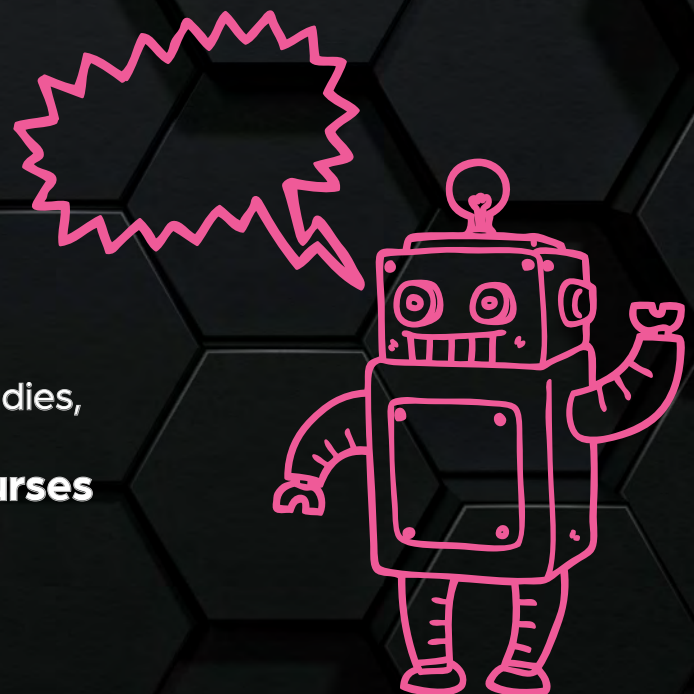
Jacqueline Lyon

Assistant Professor, Chicano and Latino Studies,

Useful Structures for AI in College Courses

Andrea Johnson

Lecturer, Mathematics and Statistics



TO ATTEND EITHER **IN-PERSON** OR VIA **ZOOM**,
REGISTER HERE OR SCAN THE QR!

REGISTER EARLY FOR THE **IN-PERSON**
OPTION...**SPACE IS LIMITED!**



COME SPEND EARTH DAY INTEGRATING CLIMATE LITERACY & JUSTICE INTO YOUR CURRICULUM! BUDDING, BLOSSOMING, & DEEPLY-ROOTED COMMITMENTS TO SUSTAINABILITY ARE WELCOME!

Join us for

PLANTING SEEDS FOR ECO-CONSCIOUS TEACHING

**ROUNDTABLE DISCUSSION &
INTERACTIVE LEARNING WORKSHOP**

Work with interdisciplinary faculty experienced in developing sustainability and climate justice pedagogy in diverse disciplines and classroom settings

EARTH DAY!

Wednesday, April 22

11:00am – 1:30pm

Anna W. Ngai Alumni Center

D'Reams Family Board Room

MENDOCINO FARMS LUNCH INCLUDED



**REGISTER
HERE!**

facilitated by

Lily House-Peters

Geography/Environmental Science & Policy

Christine Whitcraft

Biology

Kent Hayward

Cinematic Arts

Take a break from the grind and join your
LECTURER LIFELINE colleagues for some food and
fun in the sun!

SPRING VIBES ONLY

Field Day & Social

Lawn games & chill is the vibe! We'll provide the food and *some* of the fun, but please feel free to bring any of your own fun outdoor stuff too! (e.g., kites, frisbees, horseshoes, cornhole, footballs, soccer balls, really any kind of balls, etc.).

Friday, April 24

1:00 – 3:00 pm

Ficus Grove West lawn (near MHB & fountain)

Weather forecast: 



FOR MORE INFO AND TO RSVP,
CLICK HERE OR SCAN THE QR!



The background features a large, faded seal of California State University Long Beach. The seal is circular and contains the text "CALIFORNIA STATE UNIVERSITY" at the top and "LONG BEACH" at the bottom. In the center, there are four quadrants: the top-left shows a sun, the top-right shows a bear, the bottom-left shows crossed tools (a pickaxe and a shovel), and the bottom-right shows an open book. Below the quadrants is the year "1949".

All Faculty Center programming
is open to all CSULB faculty.



RETENTION, TENURE, AND PROMOTION

Key Deadlines & Dates to Remember!

Spring 2026

MONDAY, APRIL 6

Dean's Review due

FRIDAY, APRIL 17

Rebuttals of Dean's Review due (if any)

Summer 2026

MONDAY, JUNE 1

Provost's Review due (final decision)



The Faculty Center wants to hear from you!

WHERE TO FIND US

Brotman Hall, Room 276

FC@csulb.edu

Emily Berquist

Director

emily.berquist@csulb.edu


Raven Pfister

Associate Director

raven.pfister@csulb.edu

Do you want to hear more from us?

Sign up for our **[email list](#)** to receive newsletters and event notifications directly to your inbox.



**The following pages include announcements
from our campus partners.**

**To inquire about their upcoming programming,
please reach out to them directly.**

If your organization would like to share event announcements in our next newsletter, please upload event flyers directly to **OneDrive**.

Contact the Associate Director of the Faculty Center, Raven Pfister, at **raven.pfister@csulb.edu** with any questions or concerns.


20
26

SEXUAL ASSAULT AWARENESS MONTH



4/7

Campus Safety & Self-Defense Workshop

Horn Center #114 | 12:00PM ~ 2:00PM
Hosted By: Women's & Gender Equity Center (WGEC)



4/14

Your Coping Toolbox: A Zine Workshop

Student Health Services | 3:30PM ~ 4:30PM

Hosted By: Counseling And Psychological Services (CAPS) & Safer



4/15

Clothesline Project

Upper Quad | 11:00AM ~ 2:00PM

Hosted By: Women's & Gender Equity Center (WGEC), Safer, & Not Alone At The Beach (NATB)



4 Student Health Services | 3:30PM ~ 4:30PM

Radical Hope: Healing Through Community

Hosted By: Counseling And Psychological Services (CAPS) & Safer



4/23

We Keep Each Other Safe

Virtual | 5:00PM ~ 6:30PM

Hosted By: Not Alone At The Beach (NATB)



4/27

Reclaim Your Calm: Using Mindfulness to Settle the Mind

Student Health Services | 3:30PM ~ 4:30PM

Hosted By: Counseling And Psychological Services (CAPS) & Safer



4/29

Denim Day

Maxson Plaza | 11:00AM ~ 1:00PM

Hosted By: Women's & Gender Equity Center (WGEC), Safer, & Not Alone At The Beach (NATB)



To request disability related accommodations, please contact the Bob Murphy Access Center at (562) 985 5401 or bmac@csulb.edu



CALIFORNIA STATE UNIVERSITY
LONG BEACH



Career Development Center

CORDIALLY INVITES FACULTY & STAFF TO THE

ONLINE CAREER TOOLS SHOWCASE

Thursday, April 9th | 12:00 - 1:00 PM

Learn how to incorporate these
and other career tools into your
class or workshop.

Location: Hyflex options!
Attend in-person OR via Zoom.



Online platform that utilizes AI to
help students customize resumes
to match job descriptions



Online interview preparation
tool that offers video tutorials
and virtual mock interviews
with AI feedback

In-person session at the
**Beach Sta° Development
Center, Library 301.**



SCAN HERE TO
REGISTER FOR THE
IN-PERSON SESSION

Virtual Zoom session:
https://bit.ly/SOCTS_virtual



SCAN HERE TO
REGISTER FOR THE
VIRTUAL SESSION

For more information contact:
Michelle.Linton@csulb.edu

Career Development Center BH-250, www.csulb.edu/career-development-center (562) 985-4151



To request disability-related accommodations, complete the Bob Murphy Access Center (BMAC) Event Request Form or contact BMAC at (562) 985-5401 | bmac@csulb.edu

BECOME AN ADHD ALLY

(Attention-deficit/hyperactivity disorder)

APRIL 15 | 10am-12noon

ON-CAMPUS, IN-PERSON EVENT

Calendar invite will be sent to you after you register

Join us for an interactive training designed to deepen your understanding of ADHD & empower you to better support these students.

TRAINING HIGHLIGHTS

ADHD Essentials & Lived Experience

Understand ADHD characteristics, diverse presentations, and hear student perspectives

Strengths & Support Strategies

Learn about both the strengths and challenges of students with ADHD and how ADHD affects learning and daily life

Confidently Support & Make Referrals

Recognize when students need support and effectively use strategies, campus resources, and BMAC referrals



Register at:



bit.ly/4ryfgor



Bob Murphy Access Center



To request disability-related accommodations, please contact the Bob Murphy Access Center at (562) 985-5401 or bmac@csulb.edu



CAREER
DEVELOPMENT
CENTER

STAFF &
FACULTY



CAREER ADVOCATE PROGRAM

The Career Development Center offers an empowering four-part series to help staff and faculty support their students' career goals. Upon completion of the required assignments, you will receive a letter of recommendation from Vice President Beth Lesen and Director Erin Booth-Caro, certificate, and digital badge.

To sign up and
for more information visit



Questions?

Email Maryann Nguyen at
maryann.nguyen@csulb.edu

FALL WORKSHOP

| **Becoming a Career Advocate**
* Thursday, November 6, 2025
12 p.m. - 1 p.m. (Virtual)

SPRING WORKSHOPS

| **Adopting "Plan Your Future"**
Models: *DREAM & BECOME*

* Friday, February 27, 2026
11:00 a.m. - 12:00 p.m. (Virtual)

| **AI in Recruitment: How Artificial
Intelligence is Changing the Hiring Game**

* Friday, March 6, 2026
12:00 p.m. - 1:00 p.m. (Virtual)

| **Adopting "Plan Your Future"**
Models: *SUCCEED & Recognition Event*

Friday, April 17, 2026
10:30 a.m. - 1:00 p.m. (In-Person)
CDC, Brotman Hall 250

* Recordings available upon request



To request disability-related accommodations, complete the Bob Murphy Access Center (BMAC) Event Request Form or contact BMAC at (562) 985-5401 | bmac@csulb.edu | Career Development Center, BH-250, www.csulb.edu/career-development-center (562) 985-4151

Women of Color in Academia



**LUNCH & LEARN DISCUSSION PANEL:
“NAVIGATING CONFLICT AND
DIFFICULT SITUATIONS”**

Campus Culture Addition

MONDAY, APRIL 13, 11:30- 12:45PM

LOCATION: LIB 201



AISHA PRIDGEN

Faculty Affairs, Inaugural Conflict
Resolution Manager



MARY NGUYEN

Director of the Bob Murphy
Access Center (BMAC) & Interim
Director of the Office of Belonging
and Inclusion



ALEXANDRIA CORDON

Assistant Dean of Students,
Office of Student Conduct and
Ethical Development

Moderator:

Tia Santana, Co-Facilitator, Women of Color in Academia (WOCA), CSULB



PLEASE RSVP BY EMAILING WOCA@CSULB.EDU

**OPTIONAL: SCAN THE QR CODE TO SHARE A QUESTION OR SITUATION
YOU'D LIKE THE PANEL TO ADDRESS YOUR RESPONSES WILL HELP
GUIDE THE CONVERSATION AND ENSURE THE PANEL SPEAKS TO THE
CONCERNS AND EXPERIENCES OF OUR COMMUNITY.**



ORED OFFICE OF RESEARCH & ECONOMIC DEVELOPMENT

The President and Provost Initiative **Faculty Research Awards in Inclusive Excellence (FRA-IE)** invites tenured and tenure-track CSULB faculty to propose research and innovation projects that advance inclusive excellence and equitable student success on campus and in the Long Beach region. The program supports projects that investigate policies, practices, partnerships, or scholarship related to equity, belonging, and sustainability, with the goal of generating knowledge and evidence-based strategies that strengthen inclusive and resilient systems at The Beach. Proposals may align with themes such as campus programming, institutional data and equity analysis, interdisciplinary scholarship, or community partnerships. **Up to ten awards of up to \$15,000 will be funded for projects spanning July 2026 – June 2028**, with research and development in year one and implementation in year two.

- **Faculty proposals due April 13, 2026**
- **Awards announced May 4, 2026**

Please reach out to ORED@csulb.edu with any questions.



THE CLOTHESLINE PROJECT

Hosted By: Women's & Gender Equity Center (WGEC), Safer, & Not Alone At The Beach (NATB)

WEDNESDAY, APRIL 15TH
11AM ~ 2PM | UPPER QUAD

The Clothesline Project is a powerful, visual display that raises awareness of the impact of sexual violence, as well as other forms of violence, in our community.

This display honors survivors' strength and resilience, while breaking the silence that so often surrounds their experiences.



To request disability related accommodations, please contact the Bob Murphy Access Center at (562) 985 5401 or bmac@csulb.edu



CALIFORNIA STATE UNIVERSITY
LONG BEACH

THE FACULTY CENTER SPONSORED

LECTURER LIFELINE

A Community by Lecturers, for Lecturers

PRESENTS



The Future of Lecturers & Your Future as a Lecturer ***April 17th on Zoom 1PM***

LOOKING AHEAD:

Learn more about aligning research and publications with your teaching and service as a lecturer. Bring your questions!

RSVP by 4/15

Scan the QR Code or use this [link](#) for more information and to RSVP, or email LecturerLifeline@csulb.edu with any questions. Please email us in advance with any accommodation requests (ASL, etc.).





THE GLOBAL STUDIES INSTITUTE
CALIFORNIA STATE UNIVERSITY, LONG BEACH
Making 'International' Integral To What It Means To Be Educated

2026 Curris Lecture on Global Issues

WITH
**AMBASSADOR
WILLIAM B.
TAYLOR, JR.**

Former US ambassador to Ukraine and chargé d'affaires at US Embassy in Kyiv. Taylor oversaw Middle East Transitions at State Department during the Arab Spring, served as director of the Iraq Reconstruction Office, and coordinator of US assistance to Afghanistan. He also served as vice president of the US Institute of Peace and is currently a distinguished fellow with the Atlantic Council.



See the Global Studies Institute for
more information or email:
gsi@csulb.edu

SCAN ME!



Open to the public
Registration required

[Click here to register](#)

Thursday, April 16, 2026
Reception: 5:00 PM
Lecture: 6:00 PM
Anna W. Ngai Alumni Center
1250 N Bellflower Blvd, Long Beach,
CA 90840



Bob Murphy Access Center

Autism Chose Me

Featuring ASD Voices @ The Beach Student Panel

© Gillis Williams



April 17th
12:00 pm - 2:00
pm LA2-100



Scan the QR Code to RSVP
[bit.ly/AutismChoseMe]

Join us at CSULB for an impactful event featuring keynote speaker Gillis Williams of Autism Chose Me, followed by the ASD Voices at the Beach student panel. This event brings together powerful storytelling, lived experience, and campus dialogue to explore autism, neurodiversity, and inclusion in higher education. Come listen, learn, and be part of the conversation shaping a more inclusive Beach community.



To request disability-related accommodation, please complete the Bob Murphy Access Center Request Form. [bit.ly/BMAC-Event-Request]

The Office of Research & Economic Development
is pleased to present

WEEK OF RSCA 2026



The 5th Annual CSULB Week of Research, Scholarly, and Creative Activity (RSCA) is scheduled for **April 20–24, 2026**, featuring research from students, staff, and faculty.

The value and importance of this work to both the campus community and local communities will be highlighted through Interdisciplinary dialogues, networking events, and showcases of campus innovations throughout the week.

Please consider kicking off the week with us at the Week of RSCA Mixer – a celebratory evening with light bites and refreshments to connect, recharge, and recognize the incredible work happening across CSULB.

Week of RSCA Mixer

Monday, April 20

4:00–6:00pm

Earl Burns Miller Japanese Garden

For info on events throughout the week, please check the **[event schedule HERE](#)**, as date/time/location details will continue to be added and updated in the coming weeks.





DENIM DAY

Hosted By: Women's & Gender Equity Center (WGEC), Safer,
& Not Alone At The Beach (NATB)

WEDNESDAY, APRIL 29TH
11AM ~ 1PM | MAXSON PLAZA

Join us for Denim Day, an event dedicated to raising awareness about sexual violence and showing support for survivors.

As a national day of action, we encourage our campus community to wear denim as a visible symbol of solidarity and to challenge harmful myths and attitudes surrounding sexual violence.

Together, we can promote awareness, education, and change on campus.



To request disability related accommodations, please contact the Bob Murphy Access Center at (562) 985 5401 or bmac@csulb.edu



CALIFORNIA STATE UNIVERSITY
LONG BEACH

BEACH

**INSTITUTE FOR
DIALOGUE AND COMMUNITY**

Building Pluralism in Times of Crisis

DR. NAJEEBA SYEED

*El-Hibri Endowed Professor of
Interfaith Studies*

*Executive Director of the
Interfaith Institute*

AUGSBURG UNIVERSITY

RSVP HERE!



Light refreshments will be served.



WEDNESDAY, APRIL 29, 2026

4:00pm, FCS-008

Co-sponsored by:

Office of the Provost

**Truth, Community, Healing, and
Transformation Campus Office**

TURN YOUR PASSION
INTO RESEARCH



BEACONS Faculty-Student Research Mixer

Climate - Sustainability - Environmental Justice

Thursday, April 23

3:00-3:50pm

Hillside Gateway Patio



No Experience Needed. All majors welcome!

An Informal Mixer to...

- Meet faculty conducting research in **climate, sustainability & environmental justice**
- Learn how to get involved in research
- Explore mentorship and project opportunities
- Connect your interests to real-world impact

FREE
Food

Rsvp



PCS

PRESIDENT'S
COMMISSION
ON SUSTAINABILITY



HDEV
HUMAN DEVELOPMENT
CALIFORNIA STATE UNIVERSITY LONG BEACH



ours

Office of Undergraduate Research Services



All Hearts Heard

Building Hope Together

FRIDAY, MAY 1, 2026

8:30AM - 2:00PM

LOCATION: COLLEGE OF BUSINESS- 140A

California State University Long Beach, 1250 N Bellflower Blvd, Long Beach, CA Attention all CSULB students! Explore the 8 Dimensions of Wellness through engaging activities, and meaningful conversations. Enjoy free food, fun giveaways, and a welcoming space where your student voice matters. Let's create a campus culture where **all hearts are heard**.



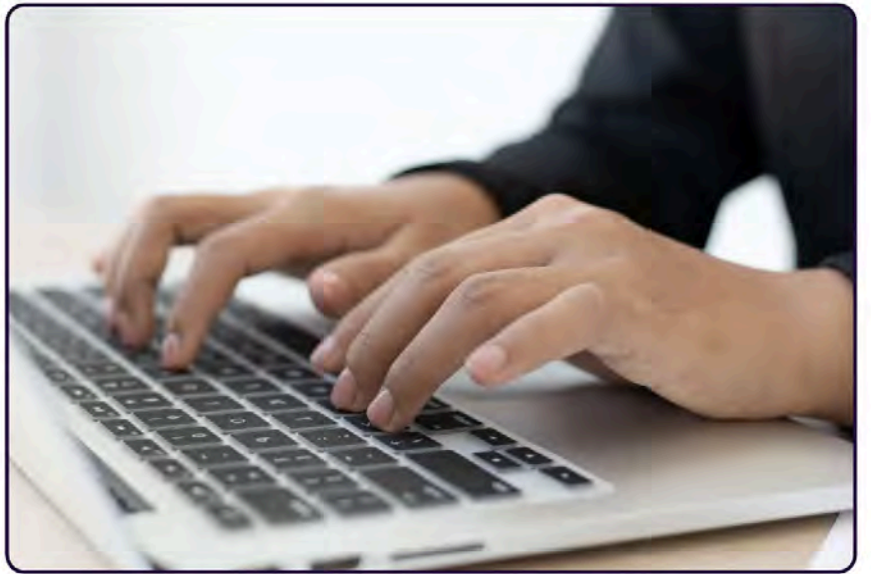
To request disability-related accommodations, complete the Bob Murphey Access Center Event Request Form or contact BMAC at (562) 985-5401 | bmac@csulb.edu

All Faculty Center programming is open to all CSULB faculty, regardless of tenure status, race, gender, ethnicity, or any other identifying factor.

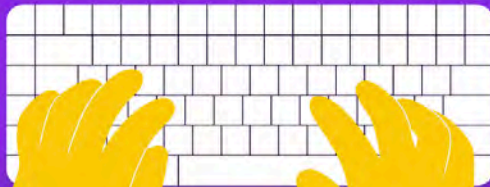
WOCA VIRTUAL WRITING

EVERY 2ND FRIDAY, 9-11AM

COME WRITE IN COMMUNITY.



<https://csulb.zoom.us/j/85159539650>
Zoom Meeting ID 851 5953 9650



California State University Long Beach

Beach Employee Alliance of Parents and Caregivers BEAPAC

**Are you a CSULB Employee Parent and or Caregiver?
Need some extra resources, support, and a network to lean on?**

Be a part of the pack, BEAPAC!

Member access includes:

- Meetings
- Guest speakers
- Helpful Resources
- Full network of CSULB employees (faculty, staff and administration) who relate to your unique experiences as parent and caregiver employees.

BEAPAC GOAL:

To foster a nurturing environment that empowers parents and caregivers to excel both personally and professionally, while enhancing the overall well-being of our families.

**To become a member, email:
miriam.watts@csulb.edu**



ACADEMIC TECHNOLOGY SERVICES PRESENTS:

FACULTY & STAFF WORKSHOPS

Summer 2026



TidyUp Your Canvas Files

Fri., June 5, 10-11am

AI Ethical Issues

Tues., June 9, 2-3pm

Caption Videos with Kaltura

Thurs., July 9, 10-11am

AI Tips and Assistants

Thurs., July 18, 10-11am

Extended Reality in Education

Thurs., July 23, 10-11am

You Can Do It with UDOIT

Tues., July 28, 10-11am

Improve Your Online Course

Tues., Aug 4, 8:30am-4pm

Zoom AI Companion

Tues., Aug 6, 10-11am

Canvas Course Accessibility

Tues., Aug 11, 2-3pm



DETAILS & RSVP:
csulb.edu/ats-events