

RIDE YOUR WAVE

EXPLORE YOUR AUTHENTIC
ENGINEERING IDENTITY

PRESENTED BY
100+ WOMEN STRONG



Coaching Circle Leaders



Dana Cabbell

Retired Director,
Southern California Edison

Cal Poly, San Luis Obispo, BSEE

www.linkedin.com/in/dana-cabbell-6b30ab72



Illary Archilla

President & CEO, Terravanta

CSULB, M.S., Mechanical
Engineering

www.linkedin.com/in/iarchilla/



Hana Moshirvaziri

Sr. Product Development Program
Manager @ MiniMed
BME Instructor @ [CSULB](#)
Mentor @ [DrHanaConsulting](#)

Claremont Graduate University, PhD
Biomedical Engineering/Applied Mathematics

CSUN, B.S./M.S. Biomedical Engineering

www.linkedin.com/in/hana-m-1640031b

Coaching Circle Leaders



Delilah Nunez

Systems Director
The Aerospace Corporation

CSULB, BS Computer Engineering
and MBA, Information Systems

[Delilah Nunez | LinkedIn](#)



Mikayla Kosmala

Mgr. Quality Data Analytics,
Hyundai & Genesis Motor
North America

UC Irvine, BS Applied and
Computational Mathematics

<https://www.linkedin.com/in/mikayla-kosmala/>



Katia Estabridis

Senior Scientific Technical
Manager for Autonomous
Systems, Naval Air
Warfare Center

UC Irvine, PhD ECE

www.linkedin.com/in/katia-estabridis-49a741232



Roya Salei, MD

Solopreneur MD/CS
Independent
Researcher/Consultant

Tabriz University, Doctor of
Medicine
Cal Poly, Pomona, Computer
Science

<https://www.linkedin.com/in/royasalei/>

What is an Engineer?

Problem-Solving Mindset

Technical Expertise

Innovation And Creativity

Ethical Responsibility

Collaboration and Teamwork

Continuous Learning and Adaption





WHY DID YOU CHOOSE ENGINEERING?

HOW YOUR ENGINEERING IDENTITY IS SHAPED?



Identifying strongly with the profession and your technical knowledge



Deep sense of belonging to the engineering community



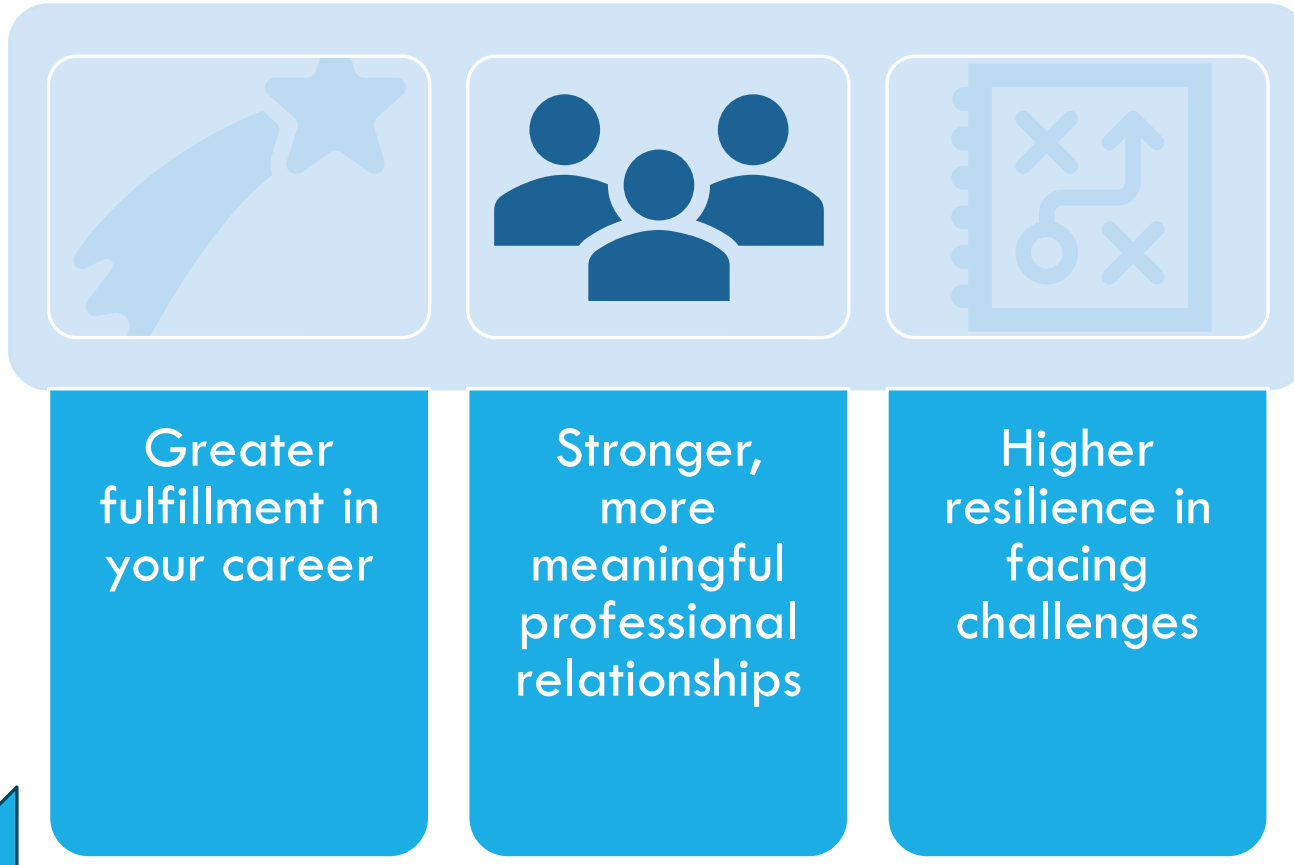
Being Passionate about solving problems and embracing the engineering mindset



Embodying engineering principles, values, and practices



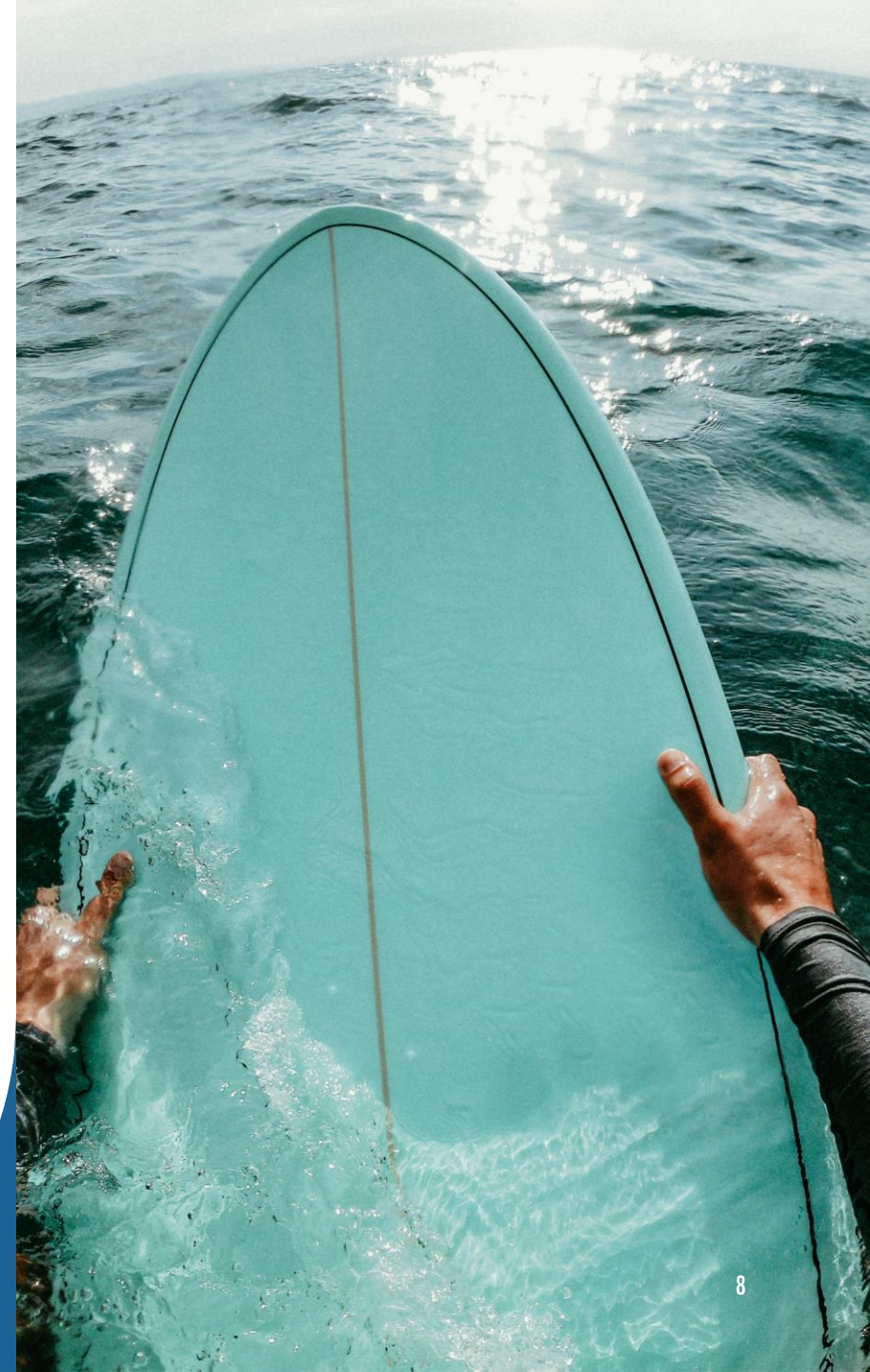
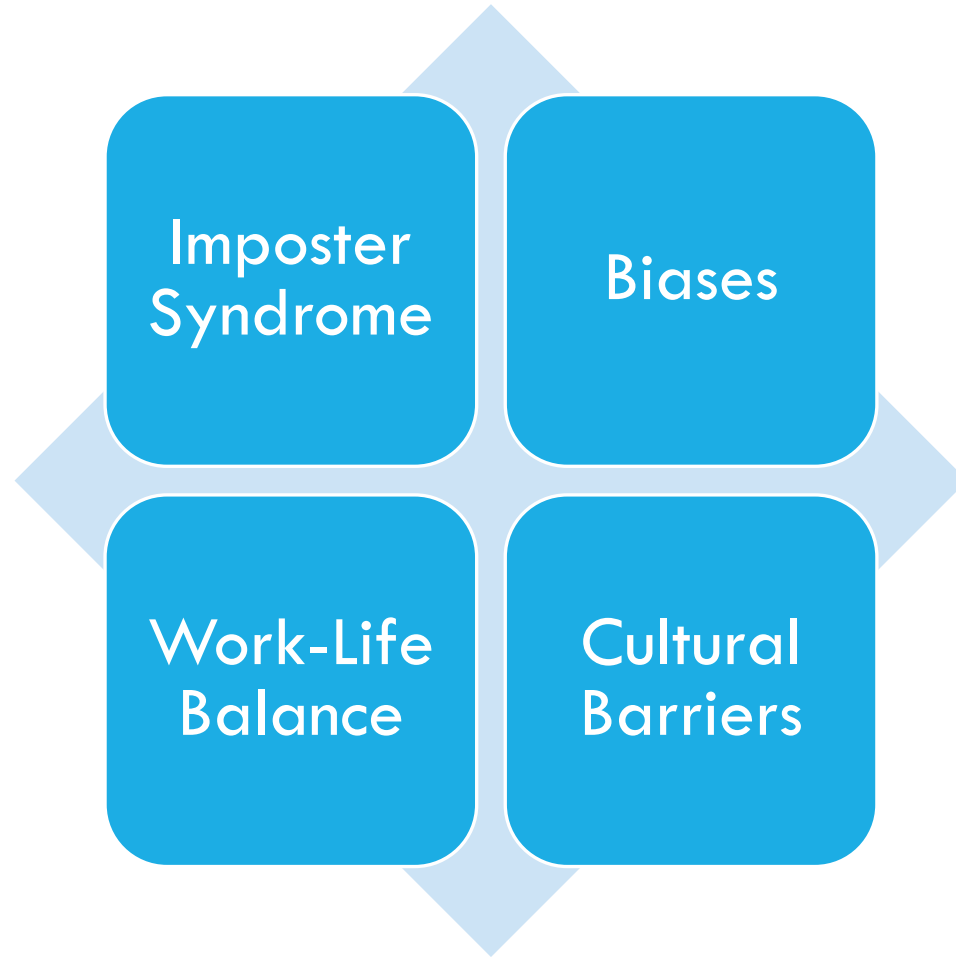
IMPORTANCE OF MAINTAINING AUTHENTICITY



Staying true to your values, background, and unique strengths while navigating the engineering world



CHALLENGES AND STEREOTYPES



HOW TO DEVELOP AN ENGINEERING IDENTITY?

Discover Your Why

Project-based learning

Internships

Build skills and confidence

Industry Networking

Continuing education courses and higher education degree

Cross-disciplinary collaborations

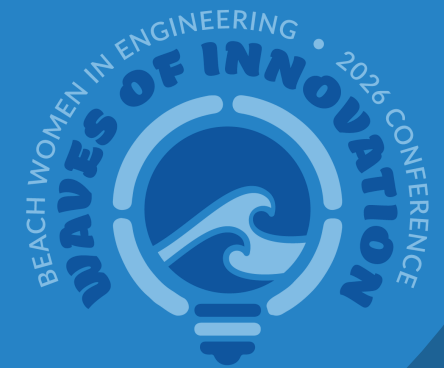
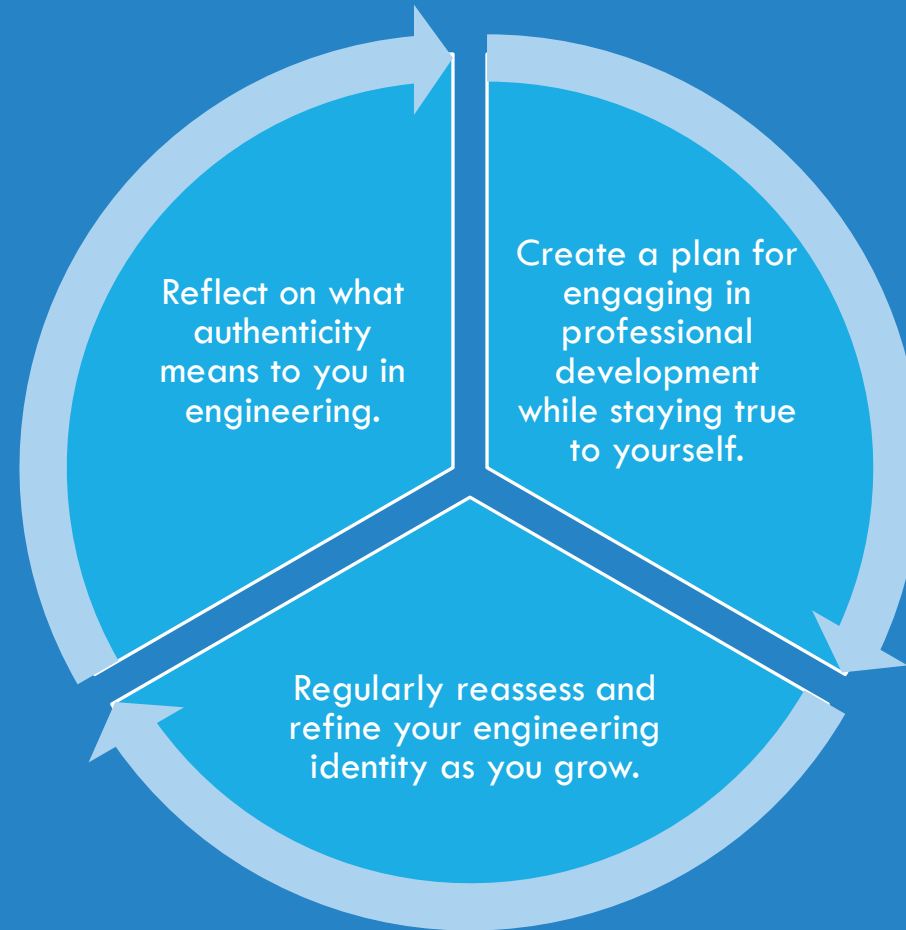


STRENGTHS AND PASSIONS ACTIVITY

What are your core strengths as an engineer?	What aspects of engineering are you most passionate about?
One skill or quality you believe makes you a strong engineer?	How do your strengths and passions align with your career goals?



TAKING ACTIONS





100+ Women Strong want to thank you for attending!

Post Event Survey

We need your feedback!

Complete the survey on the

Whova App

Review ALL

Coaching Circle Slide Decks

<https://www.csulb.edu/hung-family-college-of-engineering/coaching-circles-2026>

Connect with speakers on LinkedIn

Introduce yourself, exchange information & ask questions.

Connect with us on Linked In

<https://www.linkedin.com/groups/14238580/>

The journey of a thousand miles begins with one step. Lao Tzu