

SPRING
2025



DEPARTMENT OF HEALTH CARE MANAGEMENT



HEALTH & HUMAN SERVICES

Health Care Management (HCM) is one of the most important and exciting areas of business and public policy. California State University, Long Beach is one of only fourteen U.S. universities accredited for both graduate and undergraduate health care administration programs. Our graduate program is fully accredited by the Commission on Accreditation for Health Management Education (CAHME), and our undergraduate program is a fully certified member of the Association of University Programs in Health Administration (AUPHA).

OFFICIAL
NEWSLETTER OF
SPRING 2025

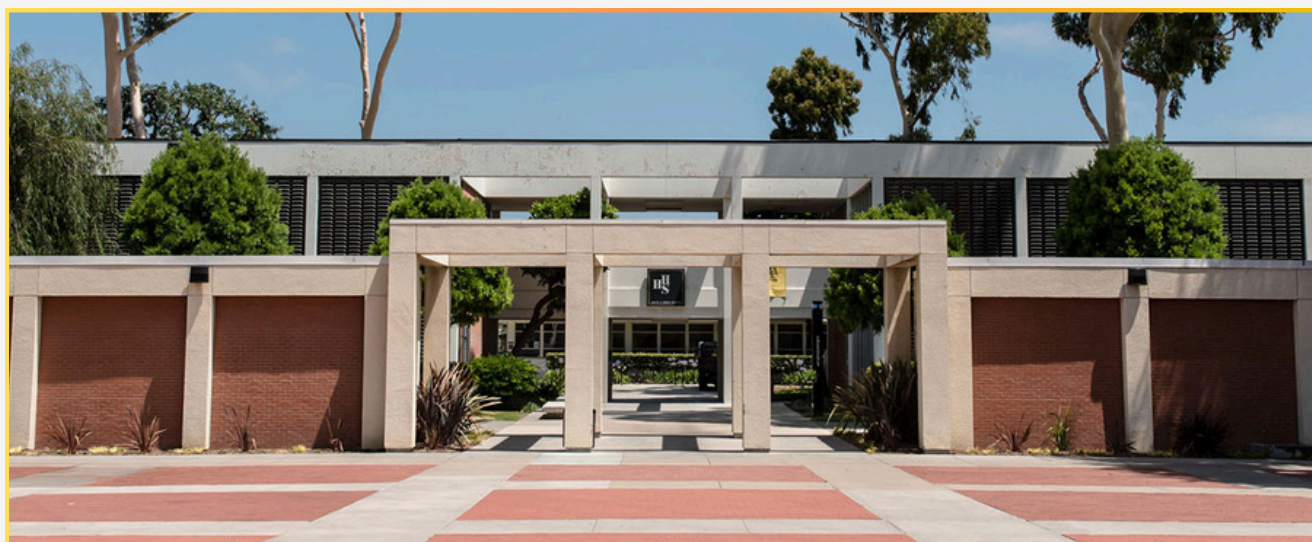


SPRING
2025



TABLE OF CONTENT:

Department Chair Message ...	Pg. 3
HCA Student Forum ...	Pg. 4
Upsilon Phi - Delta ...	Pg. 5
HCA Student Forum & Upsilon ...	Pg. 6
Exclusive Meet & Greet: Guest Speaker Dr. Anthony C. Chang ...	Pg. 7
Coffee Social ...	Pg. 11
2025 CAHME Awards Ceremony ...	Pg. 12
Veterans Day 2024 Documentary Screening: By My Side ...	Pg. 14
Wounded Warrior Service Dog Program: Advancing National Standards ...	Pg. 15
New Academic Options in Healthcare Management ...	Pg. 18
HCM Students Compete in Case Competition ...	Pg. 22
College Bowl: 2025 ...	Pg. 25
20 th Anniversary Celebration ...	Pg. 30
Faculty Spotlight ...	Pg. 38
Thank You ...	Pg. 42



SPRING
2025



DEPARTMENT CHAIR MESSAGE:

***Greetings Friends, Members,
and Supporters of the
department! Welcome to the
2025 Annual HCM Newsletter!***

We have some exciting news and updates to share with you. Health Care Management (HCM) had an exciting and productive year in 2024-2025. If you have not been following our regular updates, the department's name has changed from Health Care Administration to Health Care Management to more accurately reflect the field of study and professional opportunities available to our graduates. HCM has now added two new options to our degree program.



In the Fall of 2025, we are very excited about these two new opportunities for our students to be exceptionally prepared to enter today's workforce. The first option is Healthcare Data Analytics. The students will complete 15 units, including the Healthcare Data Analytics Capstone class, which allows the students to work with local organizations using real-time data. We are also very excited to offer a second option in Risk Management and Safety. This option of study will prepare students for the sought after field of managing risk and patient/public safety.

We had some exciting events during the spring semester of 2025. The HCM department, CPaCE, HCAFS, and UPD hosted Dr. Anthony Chang in an interactive workshop where we all learned about the future of AI in healthcare. The turnout was fantastic, and we were able to have a large interactive Q&A session with Dr. Chang. The department is excited to announce that it has been approved to hire an additional tenure-track professor during the academic year 2025-26. We are currently searching for an applicant with a general background in Health Care Management -Risk, Finance or Data Analytics. This Spring, HCM will hold a departmental graduation for the 2025 graduate and undergraduate HCM students. It has been very well received by students, family, and friends in the past two years, so we have decided to solidify it as a yearly event. The tentative date for 2025 is May 10th. Be sure and stand by for more information concerning this exciting event! Finally, we had two teams participate in the ACHE College Bowl in the Inland Empire. Both the undergraduate and graduate teams performed well, and our undergraduate team made the finals! Additionally, we had two more graduate teams who competed on campus and did a great job. I would like to add a special thank you to Tom Knego and Rebecca Perley who volunteered many hours preparing our students for this competition. If you are interested in participating or attending the ACHE College Bowl next year, please contact Tom Knego or one of your professors for more information.

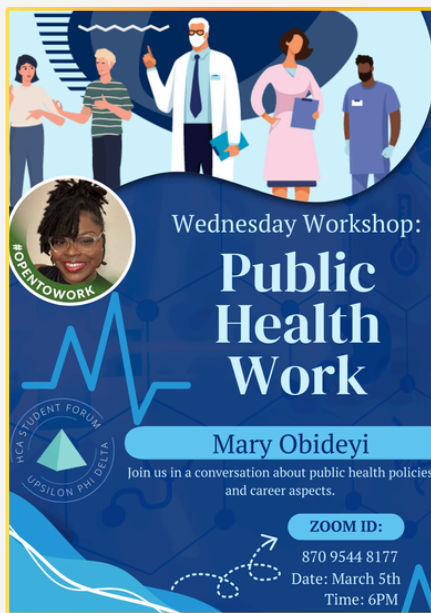
In the future, look for announcements to participate in our numerous activities and in our Networking events. Have a great summer!

-Henry O'Lawrence

SPRING
2025



HCA Student Forum (HCASF)



HCA Student Forum is recognized as a campus student academic organization at California State University, Long Beach, operating under the College of Health and Human Services and the CHHS Student Council. HCASF Student Forum provides a vehicle for constructive student involvement, recognition, and representation in the profession of Health Care Administration. Its mission is to promote an environment advantageous to the educational and ethical development of personal and social skills for effective leadership in healthcare organizations. UPD is a national honor society that recognizes both undergraduate and graduate academic excellence in the field of health care.

Collaborations involve:

Developing associations with local and regional healthcare executive groups to enhance academic and career opportunities, **Inviting** alumni and health care administrative practitioners to meet with students, **Participating** in campus-wide student government,

Advising HCM Department Faculty of student concerns and suggestions for improvement, **Helping** students network and find internships and jobs, & **Having FUN** with fellow students and alumni.



SPRING
2025



Upsilon Phi - Delta (UPD)

Upsilon Phi Delta (UPD) is the nationally recognized academic honor society for healthcare administration students. UPD honors students who have demonstrated academic excellence by maintaining a GPA of 3.25 or higher and completing at least two semesters in the healthcare administration program.



Check us out!

CSULB Healthcare Administration Student Forum (@hcasf)

CSULB UPD Honor Society (@csulbupd)

Upsilon Phi Delta Honor Society

Healthcare Administration Student Forum

SPRING
2025



HCA Student Forum (HCASF) & Upsilon Phi-Delta (UPD)

Together, HCASF and UPD have partnered to host a variety of engaging events throughout the academic year. These included monthly general meetings where students stay informed and connected with peers and faculty, interactive workshops that focus on resume building, graduate school preparation, and interview techniques, and networking events that offer opportunities to connect with professionals, alumni, and potential employers in the healthcare industry.

These experiences were designed to equip students with the knowledge, skills, and connections needed to thrive academically and professionally.

We had the privilege of hosting a unique meet-and-greet networking event with Dr. Anthony C. Chang, a world-renowned authority in artificial intelligence and healthcare innovation. For an interesting discussion about the changing role of AI in medicine and beyond, the event brought together professionals, academics, and students. **Dr. Chang encouraged participants to consider the future of technology and multidisciplinary cooperation by sharing insightful observations gleaned from his ground-breaking research.**

CSULB Healthcare Management Department Presents

An Exclusive Meet & Greet and Networking Event with a Renowned Artificial Intelligence Expert

Guest Speaker: Dr. Anthony C. Chang

A pediatric cardiologist and Chief Intelligence and Innovation Officer at CHOC. A passionate advocate for use of artificial intelligence and innovation in medicine to transform global healthcare for both children and adults.



Date

**Wednesday,
March 12**



Time

3:00 PM



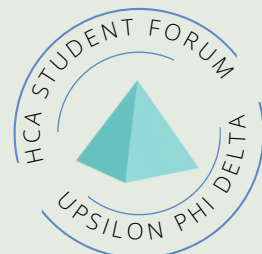
Location

**CPaCE
Conference Room**



Join us for great speaker,
networking opportunities with
faculty, alumni, advisory board
members, & fellow students, and
refreshment!

To request disability-related accommodations, please complete the Bob Murphy Access Center Event Request Form. CSULB is an Equal Opportunity Employer/Educational Institution.



SPRING
2025



HCA Student Forum (HCASF) & Upsilon Phi- Delta (UPD)



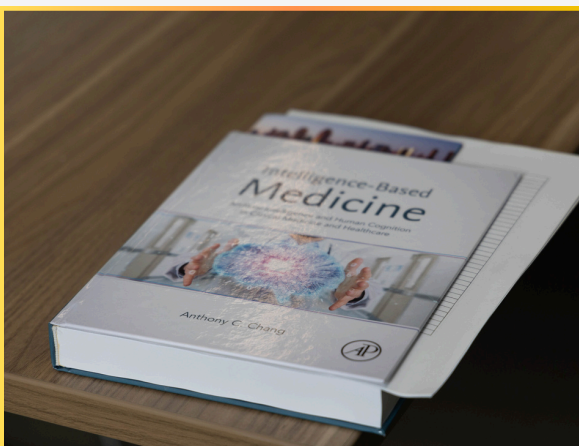
Consider joining us as we build a strong and supportive community of future healthcare leaders. Get involved with HCASF and UPD: Your Pathway to Academic and Professional Growth!



SPRING
2025



HCA Student Forum (HCASF) & Upsilon Phi- Delta (UPD)



**Visit link to learn valuable insights
on Welcoming AI in Healthcare. >>>**

**Welcoming Artificial Intelligence In Health Care – Dr.
Anthony Chang**

Image Dr.

California State University Long Beach / Mar. 14

SPRING
2025



HCA Student Forum (HCASF) & Upsilon Phi- Delta (UPD)



SPRING
2025



COFFEE SOCIAL

One of our networking collaboration events last semester was the Coffee Social on December 7th, where students had the opportunity to network with the HCM Advisory Board, Faculty, Peers, Alumni, and other esteemed Healthcare Professionals.

Collaboration and Networking





2025 CAHME Awards Ceremony

We are proud to announce our National Scholarship Award Winner:
Elizabeth Kavarianian

The scholarship comes from CAHME, one of our department's accrediting bodies, and was presented at their national conference.





The Department of Health Care Management in the College of Health and Human Services at California State University, Long Beach wishes to congratulate our own Elizabeth Kavarianian, a student in the MS-HCA Accelerated Program for her CAHME/Judy Baar Topinka Foundation Scholarship for Health Policy! We take pride in our HCM Department for cultivating passionate citizens of the world who will embrace life-long learning, committing to social justice, and, above all, access that courage to embark on something new and challenging in their lives. Congratulations, Elizabeth!



College of Health and
Human Services

I'm deeply honored to receive the CAHME/Judy Baar Topinka Foundation Scholarship for Health Policy. This award embodies values I strive to uphold: equitable healthcare, ethical leadership, and community-centered governance. Judy Baar Topinka's legacy demonstrates the profound impact of leadership on creating lasting change, and I am humbled to receive an award in her name. This award not only supports my efforts in continuing my education, but strengthens my resolve to continue advocating for policies and programs that promote access to essential health services. I am profoundly grateful to my mentors, professors, colleagues, and family for their guidance and encouragement throughout my journey.

*Kind regards,
Elizabeth Kavarianian*

Veterans Day 2024 Documentary Screening: By My Side

To help celebrate Veterans Day 2024, the Department of Health Care Management hosted a special outdoor screening of the documentary *By My Side* on the CSULB North Quad, highlighting the profound impact service dogs have on veterans with PTSD. The event brought together students, faculty, and community members to honor veterans and engage in a meaningful discussion on the role of service dogs in mental health treatment. Attendees enjoyed complimentary pizza and drinks as they gathered under the evening sky for this engaging and informative event. Following the screening, a distinguished panel of experts shared their insights on the challenges and successes of PTSD and receiving care. The Q&A panel featured the film's producer, Vicki Topaz, VA clinical psychologist Dr. Leigh Messinides, and Dr. Jeremy Ramirez who provided valuable perspectives on the documentary's themes and the broader implications for veteran care. The discussion emphasized the importance of self-care and promoting healthy conversation around mental health.





Wounded Warrior Service Dog Program: Advancing National Standards



After a successful year of Department of Defense (DoD) research and program development, Dr. Jeremy Ramirez has been awarded an additional year to continue leading efforts to establish national standards for quality service dog training for military service members and veterans diagnosed with various disability conditions, including PTSD. Through the Wounded Warrior Service Dog Program (WWSDP), his team of student researchers collaborate with 28 accredited service dog training organizations to evaluate and refine best practices in training, placement, and long-term support for veterans.



His research team has facilitated multiple focus group meetings, including: service dog trainers, program managers, industry representatives, caregivers, and veterans who receive service dogs—to establish a consensus on best practices in service dog training and veteran support. The team is currently analyzing extensive survey data collected from service dog training organizations and veterans to continuously refine these standards and improve service delivery.



Dr. Ramirez's leadership in this space has also led to national advocacy efforts.

He was invited to speak at Pet Week on Capitol Hill, where he advocated for improved national health policies to expand service dog accessibility for the more than 2 million veterans who could benefit from PTSD service dog assistance. His advocacy efforts aim to bridge gaps in funding, research, and legislative support for service dog programs.

As the program progresses, Dr. Ramirez and his team of student researchers remain committed to advancing service dog policy and research, ensuring that veterans receive high-quality, effective, and well-supported service dog assistance as part of their healthcare journey.



Abstract

Background: Post-traumatic stress disorder (PTSD) remains a significant mental health challenge among veterans, with traditional treatments often yielding mixed results. Emerging research suggests that psychiatric service dogs may serve as valuable therapeutic adjuncts. However, longitudinal studies examining their effectiveness in PTSD management remain limited.

Objectives: This study investigates the impact of psychiatric service dog partnerships on PTSD symptoms, depression, social functioning, and overall health-related quality of life (HRQoL) among veterans, compared to usual care alone.

Methods: A longitudinal study was conducted with 190 veterans diagnosed with PTSD, comparing those paired with psychiatric service dogs ($n = 95$) to a waitlist control group ($n = 95$). Participants completed standardized assessments measuring PTSD severity, depression (PHQ-9), HRQoL, and social engagement at baseline, 1-month, and 3-month follow-ups. Difference-in-differences (DiD) regression analysis was applied to assess changes over time between groups.

Results: Veterans with service dogs demonstrated significant reductions in PTSD symptom severity at both 1-month ($P = 0.002$) and 3-month ($P = 0.001$) follow-ups, compared to the waitlist group. Depression scores improved more significantly in the service dog group (DiD Coef. = -3.07 , $P < 0.001$), with corresponding increases in social participation and HRQoL measures. No significant differences were found at baseline between groups, confirming comparability.

Conclusions: Findings suggest that psychiatric service dogs provide meaningful mental health benefits for veterans with PTSD, particularly in reducing symptom severity and improving overall well-being. These results support the potential integration of service dog partnerships as complementary interventions in PTSD treatment plans. Future research should explore long-term outcomes and optimize service dog training models for veteran-specific needs.

Keywords: Service Dogs, PTSD, Mental Health Outcomes, Health Related Quality of Life, Veterans





For further Information

For those interested in gaining a deeper understanding of how Service Dogs support individuals or veterans with PTSD, we encourage to explore the resources listed. These resources provide valuable insights, research findings, as well as real life accounts that highlight the critical role services dogs play in improving mental health and quality life.

	1990-1999	2000-2009	2010-2019
Gender (years)	24(23)	31(34)	30(30)
Mean score	28(24)	31(34)	31(34)
Score range	19-39	24-40	23-40
Knowledge (%)	32(38)	31(34)	33(34)
Children's knowledge (%)	31(35)	30(34)	33(34)
Knowledge gap (knowledge %)	19(42)	31(34)	33(34)
Attitude (score)	14(16)	17(18)	16(16)
Mean score	15(16)	16(16)	16(16)
Score range	10-21	10-21	10-21
Depression	72(70)	71(72)	61(63)
Depression	83(84)	82(84)	80(80)
Depression	72(70)	71(72)	61(63)
Depression (%)	83(84)	82(84)	80(80)
Depression (%)	83(84)	82(84)	80(80)

JAMM International

Post-traumatic stress disorder (PTSD) remains a significant mental health challenge among veterans, with traditional treatments often...

Journal of Archives in Military Medicine / Mar ...



PTSD Service Dogs: On A Mission To Save Lives | Pet Week on Capitol Hill

To shine a spotlight on the urgent need for more trained service dogs for military veterans living wi...

 petnight.com

SPRING
2025



New Academic Options in Health Care Management

The Department of Health Care Management is excited to introduce two new academic options, designed to equip students with specialized knowledge and practical skills in important areas of healthcare administration. These new options include **Healthcare Data Analytics** and **Risk Management and Safety**, which will provide students with targeted expertise in high-demand sectors of the healthcare industry.



College of Health and
Human Services



Option in Healthcare Data Analytics

Option in Healthcare Data Analytics

The Bachelor of Science in Health Care

Administration, Option in Healthcare Data

Analytics is designed to prepare students for careers in data-driven decision-making within the healthcare industry. With healthcare organizations increasingly relying on big data and analytics to improve patient care, reduce costs, and optimize operations, this program provides students with the technical and analytical skills needed to manage healthcare data effectively.



Key Features:

- **Hands-On Technical Training:** Students will work with Excel, MySQL, Tableau, and Power BI to perform data visualization, statistical modeling, and database management.
- **Comprehensive Curriculum:** Courses will cover exploratory data analysis (EDA), healthcare database management, and data visualization tailored to real-world healthcare challenges.
- **Industry-Standard Tools & Data Sources:** Students will gain exposure to electronic health records (EHRs), population health datasets, and decision-support systems used in modern healthcare analytics.
- **Capstone Project:** A culminating Healthcare Data Analytics Capstone course will allow students to apply their skills to real-world healthcare datasets, solving practical problems in the field.



Career Opportunities:

Graduates of this program will be prepared for roles such as:

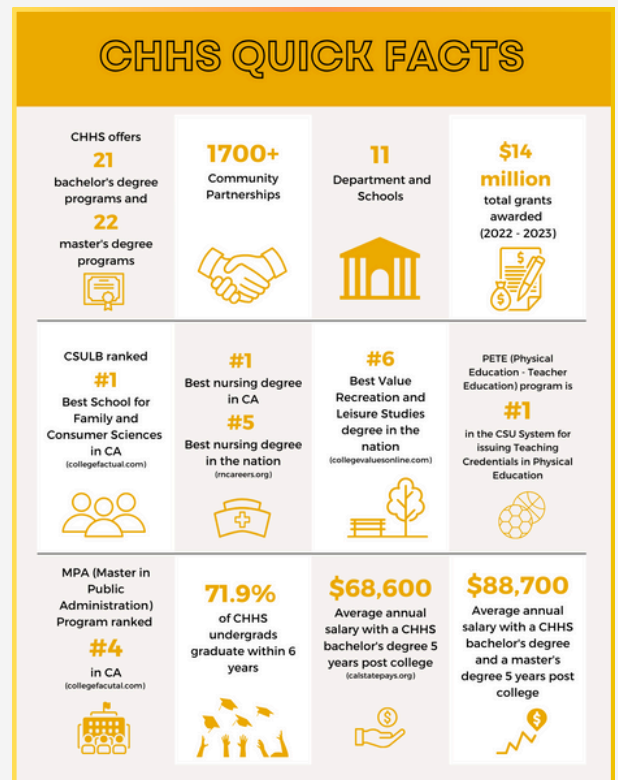
- Healthcare Data Analyst
- Health Informatics Specialist
- Business Intelligence Analyst in Healthcare
- Population Health Data Specialist

Option in Risk Management and Safety

The Bachelor of Science in Health Care Administration, Option in Risk Management and Safety prepares students for leadership roles in healthcare compliance, patient safety, and organizational risk mitigation. With increasing regulatory requirements and patient safety concerns, risk management has become a critical function in healthcare administration.

Key Features:

- **Core Training in Risk Mitigation:** Students will learn how to identify, analyze, and mitigate risks in hospitals, clinics, and other healthcare facilities.
- **Legal & Regulatory Compliance:** Courses will cover healthcare law, financial risk management, and patient safety protocols, ensuring students understand the complex regulatory landscape of the healthcare industry.
- **Crisis & Emergency Preparedness:** The program includes specialized training in healthcare disaster preparedness and emergency risk management, preparing students to lead responses in high-risk situations.
- **Real-World Application:** Through internships and case studies, students will develop skills in incident response, compliance auditing, and quality assurance.



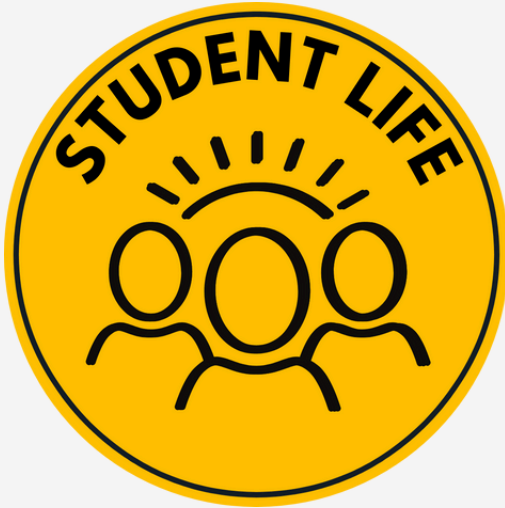
Career Opportunities:

Graduates will be well-positioned for careers in:

- Healthcare Risk Manager
- Patient Safety Officer
- Compliance & Quality Assurance Specialist
 - Emergency Preparedness Coordinator
 - Regulatory Affairs Specialist in Healthcare



Why Choose These New Options?



Both programs align with CSULB's mission to prepare students for high-impact careers in healthcare administration. By combining technical expertise, policy understanding, and hands-on learning, these options will bridge the gap between industry needs and student career aspirations.



HCM Students Compete in Case Competitions

Multiple CSULB Dept of Healthcare Management students participated in recent healthcare case competitions and more are scheduled to compete next month. **A Case Competition invites students from accredited healthcare management programs to tackle real-world healthcare challenges.** Teams collaborate to develop innovative solutions, presenting their ideas to a panel of esteemed judges. Coached by adjunct professor Tom Knego, these competitions are great ways to build one's resume, confidence and provide networking opportunities.

Competing in the UCLA Center for Healthcare Management Competition in January 2025 were Graduate Students Brandon Walen, Ruchi Narkar, Elizabeth Kavarianian, Alexis D'Asaro, Oluwaseun Orietan, Priya Sandhu and Arianna Pretolani.

The recently completed UCI Health–Cornell Sloan Case Study included CSULB Graduate students Oluwaseun Orietan, Priya Sandhu and Carissa Sepulveda.



HCM Students Compete in Case Competitions

UCLA Case Competition

Multiple CSULB Department of Healthcare Management students participated in healthcare case competitions this past academic year.

The Case Competition invited students from accredited healthcare management programs to tackle real-world healthcare challenges.

Teams collaborated to develop innovative solutions, presenting their ideas to a panel of esteemed judges.

Coached by adjunct professor Tom Knego and full-time faculty Rebecca Perley, these competitions are great ways to build one's resume, confidence, and provide networking opportunities.



In the UCLA Center for Healthcare Management Competition in January 2025 were Graduate Students Brandon Walen, Ruchi Narkar, Elizabeth Kavarianian, Alexis D'Asaro, Oluwaseun Orietan, Priya Sandhu, and Arianna Pretolani.

In addition, **Marisa Stockton, Danna Gutierrez Aguilera, and Michelle Maldonado finished in 3rd place in the Healthcare Case Competition sponsored by the Price School of Management at UCLA.**



HCM Students Compete in Case Competitions

UCI Case Competition

Graduate students Oluwaseun Orietan, Priyanka Sandhu Sepulveda completed in the **UCI Health–Cornell Sloan Case Study Competition**. Also placing high was the team of **Carissa Sepulveda, Genness Amador Villanueva, and Stephanie Feurtdo Ebanks**.



College Bowl 2025

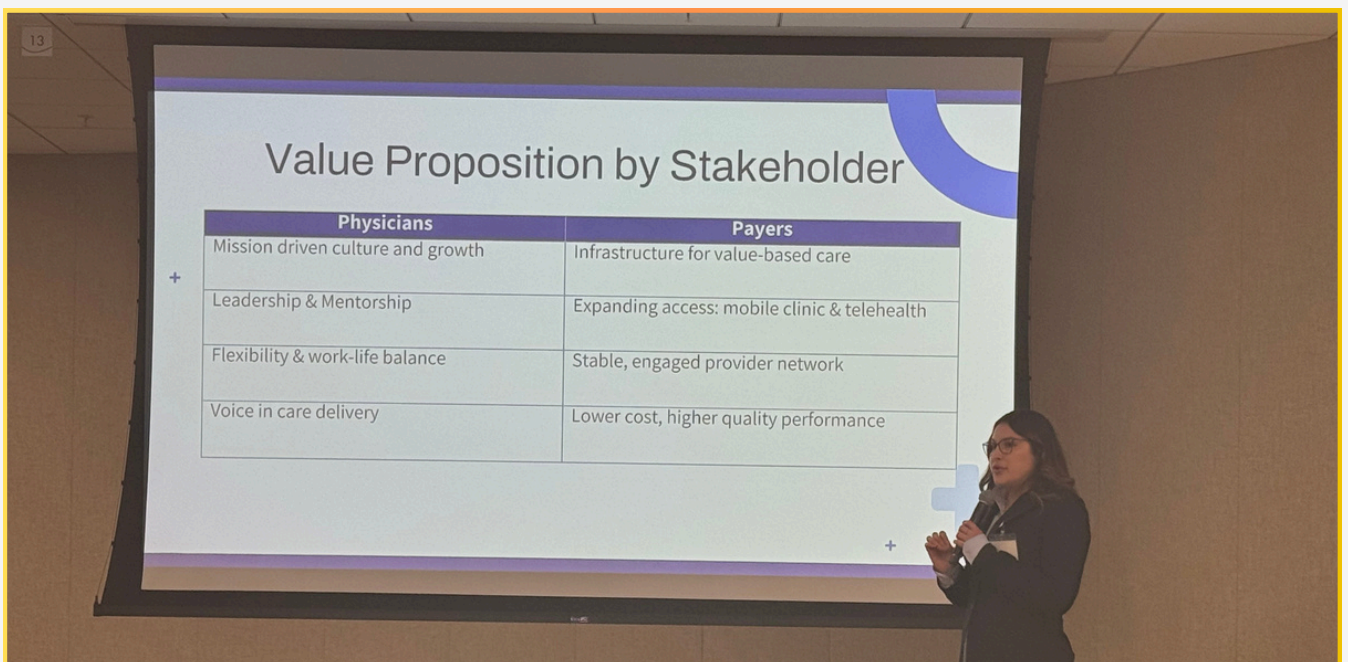
Recently, 15 CSULB competed in the **College Bowl Competition** sponsored by the Southern California Chapter of ACHE. CSULB sent teams of **Graduate and Undergraduates to the competition with the undergraduate team of taking second place honors.** The Dept of HCM also sponsored a related competition on campus featuring CSULB teams against each other. **Congratulations to all College Bowl participants** including Oluwaseun Orietan, Priya Sandhu, Sandra Farag, Arya Jawade, Jennifer Huina-Gonzales, Christina Liu, Jessica Bridges, Carla Mejia, Shana Liu, Maeleen Leon, Jessica Villalta-Paxtor, Gisselle Diaz, Maryivet Rivera, Natalie Gonzales Moreno, and Emily Shon.



College Bowl 2025



College Bowl 2025



College Bowl 2025

NERIPA
SWOT Analysis

STRENGTHS:

- Joint ownership by PHNE & NEMHS
- Strong community connections
- History of support from state

OPPORTUNITIES:

- Re-enter value-based care via ACO REACH and MSSP BASIC Track
- Build mobile/telehealth access for rural patients
- Leverage mentorship from aging surgeon workforce
- Population shift towards Medicare/Medicaid could drive qualifications for ACOs

WEAKNESSES:

- Failed MSSP ACO > loss of trust and poor performance reputation
- 20% physicians lost to TIPA
- Underperforming IT investments (data unusable for actionable clinical improvement)
- Fragmented physician network (alignment and incentive issues)
- Shrinking commercial patient base

THREATS:

- Aggressive competition (TIPA) offering better incentives
- 55+ surgeon cohort = risk of mass retirement and loss of key revenue generators
- Increasing financial losses due to Medicare/Medicaid underpayment (~7%)

Appendix 1~5



College Bowl 2025



20th Anniversary Celebration

CSULB's Master of Science in Health Care Administration (MSHCA) program, a collaboration of CHHS and CPaCE, hosted its 20th Anniversary Celebration on Saturday, September 21st at the Walter Pyramid on campus. More than 100 alumni joined faculty and staff for an evening of reflection, inspiration, and camaraderie that commemorated two decades of excellence in health care leadership and education. Speakers included former CHHS Dean Monica Lounsbery and Associate Dean Grace Reynolds-Fisher; Deborah Ludke, Faculty & National Operations Officer at the Department of Veterans Affairs; Ardel Avelino, Vice President & Chief Operating Officer at St. Mary Medical Center; James Lott, Faculty & Advisory Board Member; Pei-Fang Hung, Professor & Interim Vice Provost of Academic Programs; and Henry O'Lawrence, Professor & HCM Department Chair.





20th Anniversary Celebration



SPRING
2025



20th Anniversary Celebration

SPRING
2025



20th Anniversary Celebration



Over the past two decades, the **MSHCA Accelerated Program** has **been instrumental in shaping the careers of healthcare professionals.**

The program's flexibility and affordability have allowed students to advance their careers while managing full-time jobs and family responsibilities.

The strong sense of community fostered by the cohort format has created lasting connections among graduates.



20th Anniversary Celebration



Looking ahead, **the MSHCA program aims to continue its tradition of excellence by expanding its curriculum and introducing new initiatives** to address the ever-changing needs of the healthcare industry. The program remains committed to preparing the next generation of healthcare leaders.

The 20th Anniversary Celebration was a testament to the MSHCA program's enduring impact on healthcare administration. As the program looks to the future, it remains dedicated to fostering excellence in healthcare leadership and education.



20th Anniversary Celebration



20th Anniversary Celebration



20th Anniversary Celebration



HERE'S TO ANOTHER 20 YEARS OF SUCCESS AND INNOVATION!



Faculty Research

Advancing Healthcare Through Data Science: Reflecting on Dr. Sara Nourazari's Insights from INFORMS 2024

The Institute for Operations Research and the Management Sciences (INFORMS) Annual

Meeting is one of the most prestigious conferences in operations research, analytics, and data science, bringing together thousands of researchers, industry leaders, and practitioners to explore cutting-edge innovations that shape decision-making across industries – including healthcare.

At INFORMS 2024, Dr. Sara Nourazari played a key role in advancing discussions on data-driven decision-making in healthcare by organizing and chairing the invited session “Mining for Health: Data Mining for Personalized Care and Operational Efficiency” as part of the Data Mining Cluster. This session showcased pioneering research on the integration of AI, machine learning, and predictive analytics in healthcare operations, featuring topics from evaluating LLAMA2, LLAMA3, GPT-4, and Mistral for forecasting clinical pathways – demonstrating that context-aware models can enhance accuracy up to 95% with semantic data integration – to developing automated techniques for detecting hallucinations in AI-generated responses, ensuring more reliable clinical decision-making. Researchers also explored data-driven strategies to optimize emergency department (ED) operations, aiming to reduce extreme wait times and improve overall efficiency in healthcare settings.



Dr. Sara Nourazari joined the CSULB Department of Health Care Administration as an assistant professor in fall 2016. Dr. Nourazari has hands-on experience in developing analytical solutions and data-driven insights in multiple research and applied projects as well as leading, supporting, and evaluating quality improvement initiatives within health care organizations

In addition to leading this invited session, Dr. Nourazari presented her own research, **“Could Provider and Patient Characteristics Influence the Outcomes of Provider Coaching in Emergency Care?”** This study examined how provider and patient demographics impact the effectiveness of coaching interventions in emergency departments (EDs). Analyzing over one million ED visits, the research integrated workflow data, patient feedback, and coaching records to assess how data-driven coaching strategies influence ED quality scores and patient outcomes. Findings revealed that coaching interventions must be tailored to specific provider and patient characteristics to maximize impact, underscoring the need for personalized coaching models in fast-paced clinical environments.

By both leading a key session and presenting original research, Dr. Nourazari elevated the presence of the Department of Health Care Management (HCM) and California State University, Long Beach (CSULB), at a premier academic and professional venue.

CSULB’s support for active engagement in prestigious national conferences like INFORMS reflects the university’s commitment to advancing healthcare management, fostering interdisciplinary collaboration, and driving impactful research in data science and healthcare operations.



Bridging AI and Healthcare: HCM's Representation at the CSU Biotechnology Symposium 2025

The CSU Biotechnology Symposium is an annual gathering that brings together students, faculty, and professionals from academia, government, and industry to explore innovations in biotechnology, AI, and life sciences. Designed to foster collaboration and professional development, the symposium provides a platform for sharing research, showcasing emerging technologies, and inspiring the next generation of biotech leaders.

As part of this year's event, Dr. Sara Nourazari participated as an invited speaker in the AI and Biotech Workshop: "Case Studies in AI and Biotech – Practical Tools from CSULB Faculty." This hands-on workshop introduced attendees to AI-driven research applications and user-friendly machine learning platforms, demonstrating how AI is revolutionizing biomedical engineering, healthcare, and biotechnology.

As part of this year's event, Dr. Sara Nourazari participated as an invited speaker in the AI and Biotech Workshop: **"Case Studies in AI and Biotech – Practical Tools from CSULB Faculty."** This hands-on workshop introduced attendees to AI-driven research applications and user-friendly machine learning platforms, demonstrating how AI is revolutionizing biomedical engineering, healthcare, and biotechnology.



During the session, Dr. Nourazari also introduced Runway ML, an AI-powered platform designed to help researchers and educators communicate complex scientific concepts through media-based AI tools – without requiring coding expertise. Runway ML enables faculty to create dynamic visualizations, automate video and image analysis, and generate AI-powered simulations that can enhance both research presentations and classroom instruction. By integrating AI into their work, faculty can transform traditional research outputs into engaging, interactive content, making scientific findings more accessible and impactful. The platform's intuitive interface allows researchers to explore AI-generated media and data-driven storytelling, helping to bridge the gap between complex scientific research and broader audiences.

Dr. Nourazari's participation in the CSU Biotechnology Symposium strengthened the Department's presence in AI-driven healthcare research across CSU. By showcasing AI-driven research and innovative tools like Runway ML, this workshop provided CSU faculty and researchers with practical insights into applying AI in their research, scientific communication, and teaching. This hands-on approach highlighted how AI can enhance data-driven decision-making, paving the way for new advancements in the field.

Q&A

The session was very well received, drawing high participation and generating a vigorous, active Q&A discussion. Attendees engaged in thought-provoking conversations about the ethical considerations, implementation challenges, and future applications of AI in healthcare and biotech. The overwhelming interest in the session underscored the growing importance of AI and machine learning in shaping the future of healthcare management and biotechnology.



Thank You for Reading!

Visit our website:

<https://www.csulb.edu/college-of-health-human-services/health-care-management>

Mailing Address:

Department of Health Care Management
California State University, Long Beach
1250 Bellflower Blvd
Long Beach, CA 90840-0004

Office Location:

HHS2-118

Office Hours:

8:00 am-5:00 pm (Monday-Friday)

Please note that hours are subject to change during the summer months and winter/spring breaks.

Main Office

Phone: 562-985-5694 (Leave a voicemail!)

Email: hcm@csulb.edu.



Thank You for Reading!

Undergraduate Advising:

Undergraduate advising for Health Care Management is done through the CHHS Advising Center.

The Advising Center can help with:

Exploring and declaring majors and minors
Providing General Education and major advising
Assisting with course scheduling and graduation planning
Helping with academic policies and processes
Connecting to campus resources.

For contact info and hours, visit the [CHHS Advising Center website](#).

Graduate Program Inquiries

MS-HCA Traditional Program, sign up:

[Information Sessions](#)

MS-HCA Accelerated Program, sign up:

[Accelerated Program Information Sessions](#)

Donations:

[Give to Department of Healthcare Management](#)

If you would like to support the Department, please visit the donations link above. Navigate to College of Health & Human Services & select Department of Healthcare Management.



Department of Healthcare Management