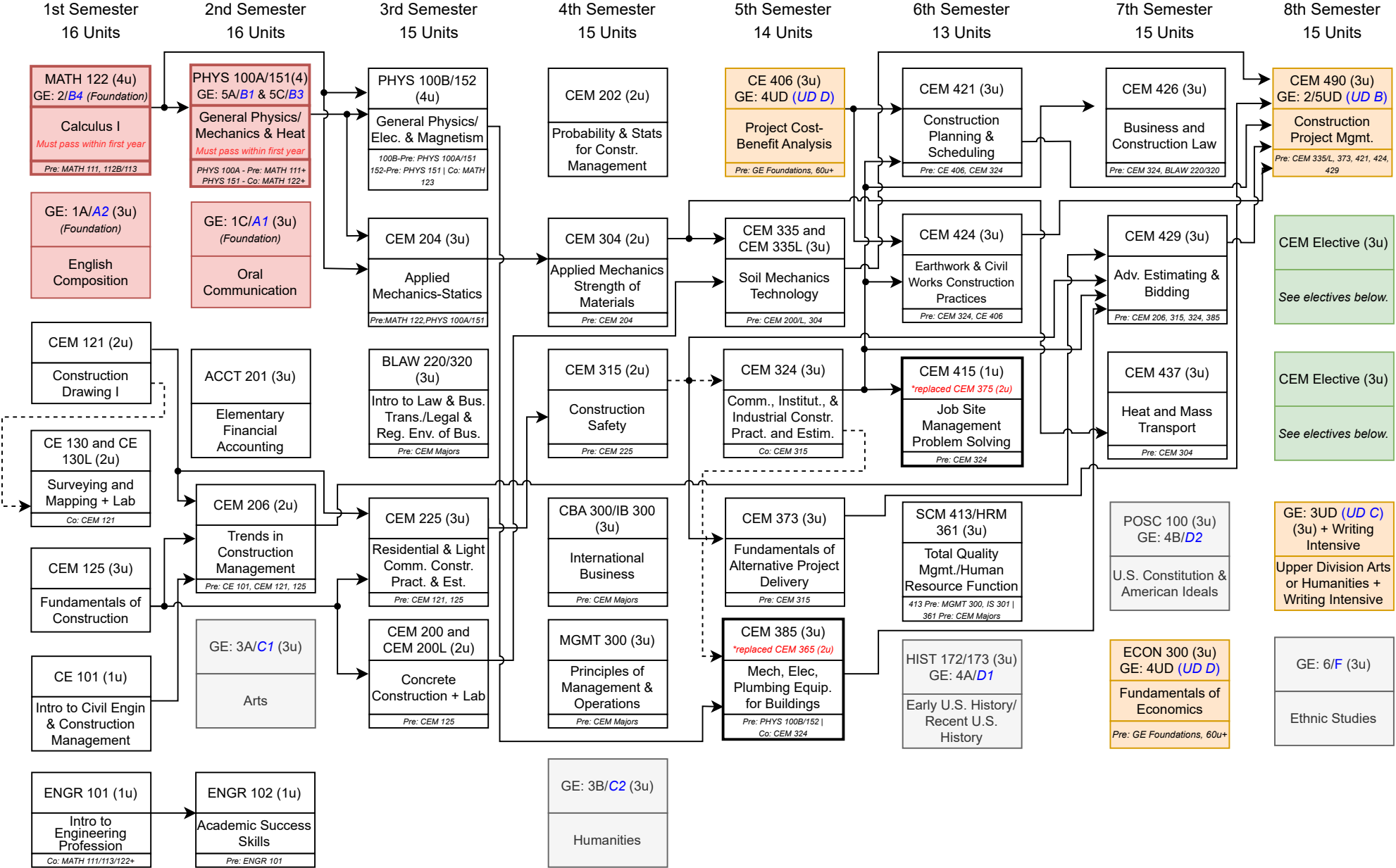




This sheet is **UNOFFICIAL** and subject to change without notice. Your requirements may differ from these. For your exact requirements, consult your Academic Requirements Report.

This sample flowchart shows the order courses are recommended to be completed for a Four Year Plan - 120 Units Required.



**Legend:**

- u = units
- MSDR
- Major and UD GE Double-Count
- Elective
- Pre/Prerequisite
- Co/Corequisite

**Contact Information**

CECEM Office: VEC 104 | Phone: (562) 985-8419

**Pre-Major Advisor:** James Stasher  
Office: EN2-304A  
Email: [James.Stasher@csulb.edu](mailto:James.Stasher@csulb.edu)

**Faculty Advisor:** Dr. Hung Nguyen  
Office: VEC-307  
Email: [Hung.Nguyen@csulb.edu](mailto:Hung.Nguyen@csulb.edu)

**To Fully Declare in COE:**  
Complete **MATH 122, PHYS 100A/PHYS 151**, GE 1A & 1C with **≥ 2.5 GPA before 60u.**

**To Continue in COE:**  
Once declared, maintain **≥ 2.0 GPA** and make satisfactory degree progress.

**CONSTRUCTION MANAGEMENT ELECTIVES**

**Take 6 units from one of the following emphasis areas:**

<b>Design-Build</b> CEM 473, 483, 485	<b>Sustainability in Construction</b> CEM 432, 481, 482, 483	<b>Heavy Construction</b> CEM 476, 483, 486
--	---	--

*\*CEM students must complete a Fieldwork requirement prior to graduation, that is certified and approved by the dept. faculty. See Faculty Advisor for more information.*

## 2025-2026 (only) GE Pattern Worksheet: Construction Management

LOWER-DIVISION (100 and 200 level courses) – 34 units required			
General Education Category	Course	Comp/IP	Double-Count
<b>Area 1: English Communication – 9 units</b>			
1A/ <b>A2</b> ) English Composition – 3 units <u>Foundation</u>			
1B/ <b>A3</b> ) Critical Thinking – 3 units <u>Foundation</u>	<b>Waived for Engineering majors</b>		
1C/ <b>A1</b> ) Oral Communication – 3 units <u>Foundation</u>			
<b>Area 2: Mathematical Concepts and Quantitative Reasoning – 3 units</b>			
2/ <b>B4</b> ) Mathematics – 3 units Foundation	MATH 122		Major
<b>Area 3: Arts and Humanities – 3 units</b>			
3A/ <b>C1</b> ) Arts – 3.0 units			
3B/ <b>C2</b> ) Humanities – 3.0 units			
<b>Area 4: Social and Behavioral Sciences – 6 units</b>			
4A/ <b>D1</b> ) U.S. History – 3 units	HIST 172/HIST 173		
4B/ <b>D2</b> ) U.S. Constitution & American Ideals – 3 units	POSC 100		
<b>Area 5: Physical and Biological Sciences – 7 units</b>			
5A/ <b>B1</b> ) Physical Science – 3 units	PHYS 100A		Major
5B/ <b>B2</b> ) Biological Science – 3 units			
5C/ <b>B3</b> ) Laboratory – 1 unit	PHYS 100A		Major
<b>Area 6: Ethnic Studies – 3 units</b>			
6/ <b>F</b> ) Ethnic Studies – 3 units			
<b>UPPER-DIVISION (300 and 400 level courses) – 9 units required</b>			
General Education Category	Course	Comp/IP	Double-Count
2 UD: Math Concepts/Quantitative Reasoning or 5 UD: Science ( <b>UD B</b> ) – 3 units	CEM 490		Major
3 UD/ <b>UD C</b> : Arts or Humanities – 3 units			
4 UD/ <b>UD D</b> : Social and Behavioral Sciences – 3 units*	CE 406		Major
<b>Graduation Writing Assessment Requirement (GWAR) – 3 units required</b>			
Writing Intensive (WI) Course – 3 units			3 UD/ <b>UD C</b>

I recognize that certain aspects of this GE Pattern are still being developed and I must consult the current CSULB GE website for approved GE courses. I understand that this form is for general planning purposes only, is considered unofficial, subject to change, and is based on the 2025-2026 CSULB Catalog.

Student Name

Student ID

Student Signature

Date