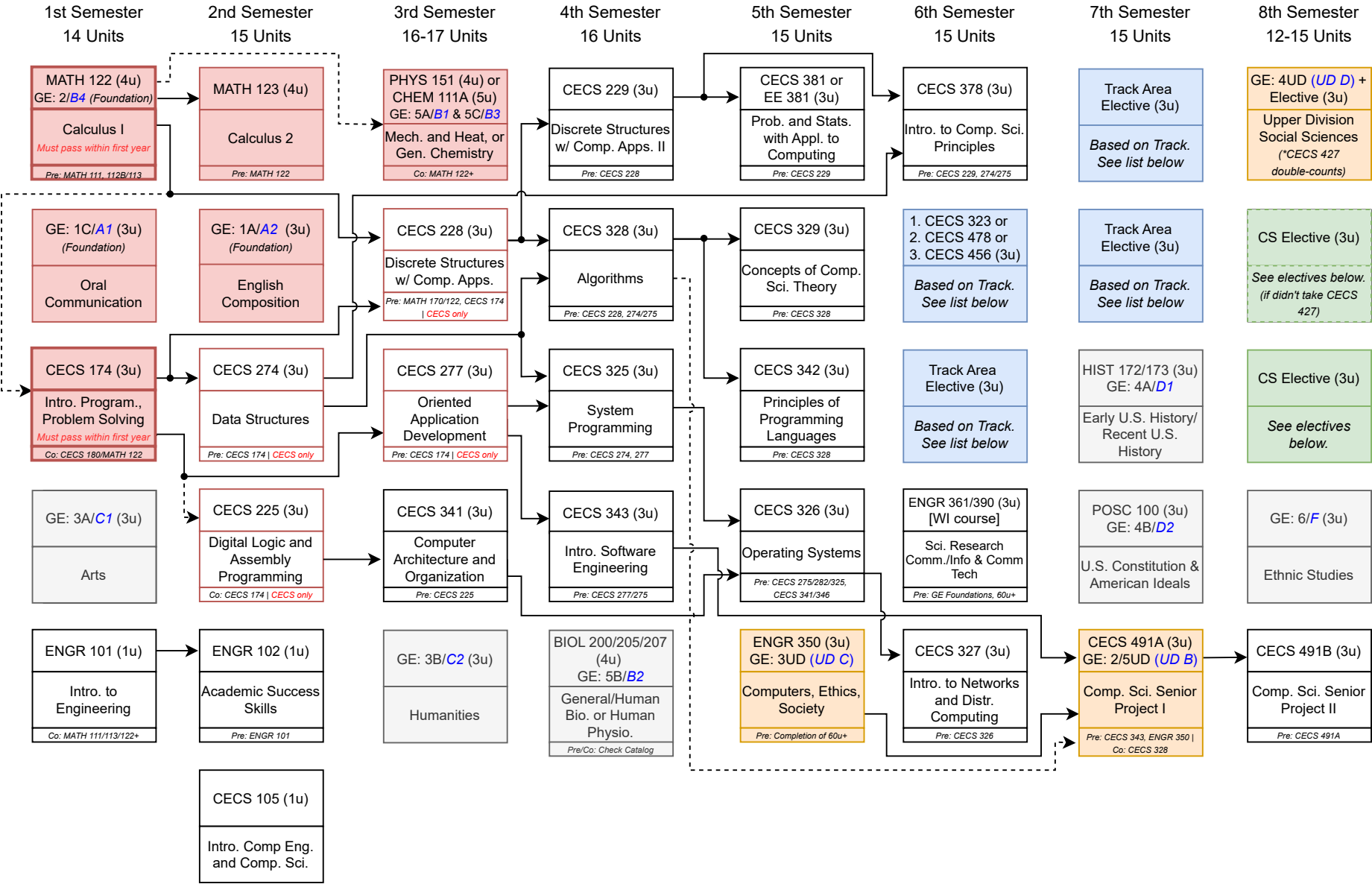




This sheet is **UNOFFICIAL** and subject to change without notice. Your requirements may differ from these. For your exact requirements, consult your Academic Requirements Report.
This sample flowchart shows the order courses are recommended to be completed for a Four Year Plan - 118-122 Units Required.



Legend:

- u = units
- MSDR
- Major and UD GE Double-Count
- CS Elective
- Track Elective
- Prerequisite
- Corequisite

Contact Information
CECS Office: ECS 552 | Phone: (562) 985-2910

Pre-Major Advisor: Stacey Argueta Office: EN2-304A Email: Stacey.Argueta@csulb.edu	Faculty Advisor (A-G): Dr. Wenlu Zhang Office: EN2-104 Email: Wenlu.Zhang@csulb.edu	Faculty Advisor (H-O): Dr. Hossein Sayadi Office: ECS 544 Email: Hossein.Sayadi@csulb.edu	Faculty Advisor (P-Z): Dr. Amir Ghasemkhani Office: ECS-531 Email: Amir.Ghasemkhani@csulb.edu
--	--	---	---

To Fully Declare in COE:
Complete **MATH 122**, **123**, **CECS 174**, **PHYS 151** or **CHEM 111A**, **GE 1A** & **1C** with **≥ 2.5 GPA** before 60u.

To Continue in COE:
Once declared, maintain **≥ 2.0 GPA** and make satisfactory degree progress.

TRACK ELECTIVES (12u)
Select 12u from one of the following three options:

Track 1: Software Dev. CECS 323*, 443, 448, 453, 470, 475	Track 2: Cybersecurity CECS 478*, 303, 456, 457, 474, 479, IS 360	Track 3: Mach. Learning/AI CECS 456*, 427, 429, 450, 451, 457, 458, 461, 458
---	---	--

*Required for Track. Track and CS electives cannot double-count.

CS ELECTIVES (6u):

CECS 303, 323, 406, 419, 427, 428, 429, 443, 444, 448, 449, 450, 451, 453, 455, 456, 457, 458, 461, 470, 474, 475, 478, 479, 480, 495, 497, MATH 323

2025-2026 (only) GE Pattern Worksheet: Computer Science

LOWER-DIVISION (100 and 200 level courses) – 34 units required			
General Education Category	Course	Comp/IP	Double-Count
Area 1: English Communication – 9 units			
1A/ A2) English Composition – 3 units <u>Foundation</u>			
1B/ A3) Critical Thinking – 3 units <u>Foundation</u>	Waived for Engineering majors		
1C/ A1) Oral Communication – 3 units <u>Foundation</u>			
Area 2: Mathematical Concepts and Quantitative Reasoning – 3 units			
2/ B4) Mathematics – 3 units Foundation	MATH 122		Major
Area 3: Arts and Humanities – 3 units			
3A/ C1) Arts – 3.0 units			
3B/ C2) Humanities – 3.0 units			
Area 4: Social and Behavioral Sciences – 6 units			
4A/ D1) U.S. History – 3 units	HIST 172/HIST 173		
4B/ D2) U.S. Constitution & American Ideals – 3 units	POSC 100		
Area 5: Physical and Biological Sciences – 7 units			
5A/ B1) Physical Science – 3 units	PHYS 151/CHEM 111A		Major
5B/ B2) Biological Science – 3 units	BIOL 200/205/207		Major
5C/ B3) Laboratory – 1 unit	PHYS 151/CHEM 111A		Major
Area 6: Ethnic Studies – 3 units			
6/ F) Ethnic Studies – 3 units			
UPPER-DIVISION (300 and 400 level courses) – 9 units required			
General Education Category	Course	Comp/IP	Double-Count
2 UD: Math Concepts/Quantitative Reasoning or 5 UD: Science (UD B) – 3 units	CECS 491A		Major
3 UD/ UD C : Arts or Humanities – 3 units	ENGR 350		Major
4 UD/ UD D : Social and Behavioral Sciences – 3 units*			CECS 427 (Optional Elective)
Graduation Writing Assessment Requirement (GWAR) – 3 units required			
Writing Intensive (WI) Course – 3 units	ENGR 361/ENGR 391		Major

I recognize that certain aspects of this GE Pattern are still being developed and I must consult the current CSULB GE website for approved GE courses. I understand that this form is for general planning purposes only, is considered unofficial, subject to change, and is based on the 2025-2026 CSULB Catalog.

Student Name _____

Student ID _____

Student Signature _____

Date _____