

PROGRAM REQUIREMENTS:

The MPA degree requires 39 semester units of graduate coursework. Students are required to have a computer with web access.

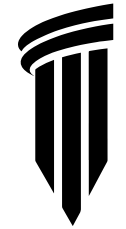
ADMISSION REQUIREMENTS:

- ▶ Bachelor's degree from an accredited university or college.
- ▶ Cumulative GPA of 3.0. An applicant not meeting the minimum requirement, but with professional experience, may be given special consideration by the Center Admissions Committee.
- ▶ One official transcript from all colleges and universities attended.
- ▶ Minimum of two years of professional experience in public service, or a career goal of employment in government or nonprofit organizations.
- ▶ Visit Cal State Apply to begin application process. Deadline to apply is November 1st.

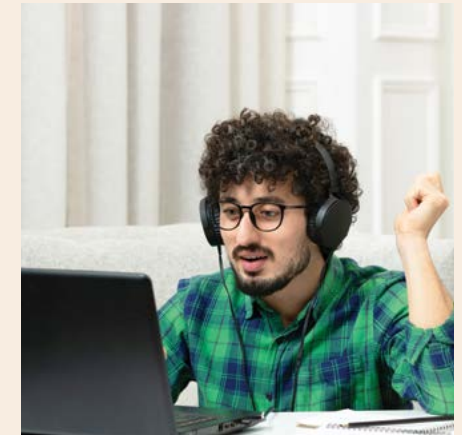
For more information about this program visit our website, email Dr. David Powell at david.powell@csulb.edu



Not printed or distributed at taxpayer's expense. It is the policy of California State University, Long Beach to provide programs, services, and benefits, including employment, without regard to race, color, national origin, ancestry, religious creed, sex, gender identification, sexual orientation, marital status, disability, medical condition, age, Vietnam era veteran status, or any other veteran's status. CSULB is an Equal Opportunity Employer.



DISTANCE LEARNING PROGRAM



An accelerated graduate degree program designed to promote public service excellence.

MASTER OF PUBLIC ADMINISTRATION

DISTANCE LEARNING PROGRAM

The Master of Public Administration Distance Learning program, offered by CSULB's Graduate Center for Public Policy and Administration in partnership with the College of Professional and Continuing Education (CPaCE), allows working professionals to earn their Master's degree in a short period of time without interrupting their career. This innovative learning opportunity features web-based, real-time, interactive sessions with students and faculty.

Graduates of the program will be equipped with the theory, practice, skills, and ethics necessary to succeed in leadership and management roles in public service and community-based and nonprofit organizations. Class sessions are held in a synchronous online format.



SPECIAL FEATURES AND BENEFITS:

- ▶ Accredited by the Network of Schools of Public Policy, Affairs, and Administration
- ▶ Six-week sessions and courses offered in a sequential accelerated format
- ▶ Students belong to a learning team and attend all classes as a group
- ▶ Courses are taught by CSULB faculty with years of academic and professional experience
- ▶ Program can be completed in 22 months
- ▶ Degree offers a blend of leadership and management expertise
- ▶ Students join a professional network of more than 2,500 MPA graduates across the U.S.

WHO SHOULD ATTEND?

- ▶ Professionals working in the public sector
- ▶ Public managers and administrators
- ▶ City managers and public officials
- ▶ Individuals who are interested in a career in public service.

YOU WILL LEARN:

- ▶ Leadership roles in the public sector
- ▶ Management skills for public service and community-based organizations

