

2ND ANNUAL

CSULB BLACK ALUMNI SCHOLARSHIP GALA



ONE VILLAGE

One Purpose

APRIL 23, 2022

CALIFORNIA STATE UNIVERSITY LONG BEACH

Our Honorees



RASHIDA CRUTCHFIELD
Change Agent Alumna



CARL KEMP
Alumnus of the Year



STEVEN NEAL
Community Partner
of the Year



NAOMI RAINEY PIERSON
Alumna of the Year



BLACK ALUMNI SCHOLARSHIP GALA

MEET OUR HONOREES

RASHIDA CRUTCHFIELD

Change Agent Alumna

Dr. Rashida Crutchfield is an associate professor in the School of Social Work at California State University, Long Beach (CSULB) and Director of the newly founded Center for Equitable Higher Education, which is dedicated to studying and promoting economic, food, and housing justice. She is also an advocate committed to amplifying the voices of marginalized communities through research and service. Prior to her work at CSULB, she served on the staff of Covenant House California, a shelter for 18-to-24-year-olds experiencing homelessness. This experience blossomed a passion to support this student population.

Dr. Crutchfield was a Principal Investigator for the California State University Office of the Chancellor study on food and housing security. Her work has been instrumental in the development of programs and services for students experiencing housing and food insecurity at all 23 CSU campuses. Her continued research and advocacy on basic needs for students has garnered statewide and national attention. She has provided input on state policy and provides consultation and support to agencies, and higher education staff, faculty, and administrators across the nation.

Dr. Crutchfield has authored or co-authored many articles, including “The starving student narrative: How normalizing deprivation reinforces basic need insecurity in higher education” and “Jumping through the hoops to get financial aid for college students who are homeless: Policy analysis of The College Cost Reduction and Access Act of 2007” in *Families in Society*. Co-authored with Dr. Ronald Hallett and Dr. Jennifer Maguire, her text *Addressing Homelessness and Housing Insecurity in Higher Education: Strategies for Educational Leaders* is used as a manual for developing programs and services to support student basic needs throughout the country.

CARL KEMP

Alumnus of the Year

Carl Kemp has more than 20 years of experience in communications and public affairs. He has managed his own government affairs and public relations practice with a wide range of clients from international shipping to major non-

MEET OUR HONOREES CONTINUED...

profits. He also created the Office of Government Affairs and Communication in the City of Long Beach, and went on to create the Office of Government Affairs and Community Relations at the Port of Long Beach. He currently manages public affairs for the Los Angeles County Department of Public Health.

Kemp has a long history of community involvement in the Long Beach area, including earning a B.A. and MPA from California State University, Long Beach, where he served two terms as student body president and Black Student Union president. He also has earned a certificate in Executive Leadership from the Harvard University School of Government. He has developed messaging around many major initiatives from local to federal government, including the Green Port Policy at the Port of Long Beach and managing communications during the COVID-19 pandemic.

Kemp worked to get the City of Long Beach, the Southern California News Group, and Long Beach Post to capitalize Black when referring to people of African descent (prior to the changes adopted by the Associated Press and New York Times Style Guides). He most recently added promoter of the Long Beach Juneteenth Celebration in Downtown Long Beach to his list of accomplishments. He currently serves on the board of the Long Beach Center for Economic Inclusion.

STEVEN NEAL

Community Partner of the Year

Steven Neal is President of the Long Beach Board of Harbor Commissioners, the Board responsible for setting policy for the Port of Long Beach and overseeing the staff of the City's Harbor Department. He was elected to the post by his colleagues on the five-member Board in July 2021 following a term as Vice President.

Appointed to his first six-year term in July 2019 by Mayor Robert Garcia, he was unanimously confirmed by the City Council as the 70th appointee to the Board since the current Commission was established in 1925.

Mr. Neal represented North Long Beach on the Long Beach City Council from 2010 to 2014. A longtime community leader, he is the senior pastor for LIFE Gospel Ministries. He is a co-founder of the Economic Policy Impact Center,

MEET OUR HONOREES CONTINUED...

a nonprofit agency working to advance economic opportunity for working families, Executive Director of the Long Beach Collective Association, and has served on the boards of Long Beach Transit and the Pacific Gateway Workforce Investment Network.

The Commission provides policy direction and oversight for the Port's capital improvement program, a plan to invest \$1.6 billion over the next 10 years to upgrade Port facilities, protect the environment, increase revenue and enhance competitiveness. Projects include the Pier B On-Dock Rail Support Facility, Long Beach Container Terminal at Middle Harbor, and other roadway, waterway, dock and rail improvements to speed cargo flow and reduce traffic.

Besides serving on various Commission subcommittees, Mr. Neal also represents the Port on national and international trade missions and serves as the Board representative or alternate to a variety of Port-related leadership organizations.

As a Councilmember, Mr. Neal focused on issues of jobs and economic development and bringing together business, labor, clergy and community leaders on programs that led to living-wage job growth.

He has also served in community advocacy roles with Molina Healthcare and United Way of Greater Los Angeles where he was Director of Labor for 10 years.

A longtime leader in the labor movement since his first election as a shop steward in the Retail Clerks Union Local 324, Mr. Neal worked his way up the ranks as a member of CWA Local 956 to become Executive Vice President and served in the Los Angeles County Federation of Labor.

A Compton native, Steven Neal and his wife, Katonja, live in Long Beach, are the proud parents of five daughters and one son, and are equally proud grandparents.

NAOMI RAINEY PIERSON

Alumna of the Year

Naomi Rainey-Pierson is an award-winning educator, philanthropist, entrepreneur and civil rights activist who has had a positive impact on the lives of thousands of community members, including many at-risk children.

Ms. Rainey-Pierson has been actively involved with the National Association for

MEET OUR HONOREES CONTINUED...

the Advancement of Colored People (NAACP) since the age of 14. A past Vice President of the California State Conference NAACP, she has served as President of the NAACP's Long Beach Branch since 2000. Under her leadership, the branch received the national Thalheimer Award, the NAACP's top honor for outstanding achievements by branches and units.

From 1975 to 2003, Ms. Rainey-Pierson was an educator and administrator in the Long Beach Unified and Compton Unified school districts, rising to principal on special assignment at Long Beach Polytechnic High School. In 2009, she was appointed by former Governor Schwarzenegger to the California Advisory Commission on Special Education.

Ms. Rainey-Pierson has served on many volunteer boards and commissions, including those of Long Beach City College Foundation, St. Mary's Medical Center, MemorialCare Todd Cancer Institute and Long Beach Cancer League. She has received a number of special honors in recognition of her efforts, including Cancer League Hero of Long Beach, Soroptimist International Woman of the Year - Education, California Conference for Equality and Justice Humanitarian Award and City of Long Beach Martin Luther King, Jr. Peacemaker Award.

A proud alumna of California State University, Long Beach, Ms. Rainey-Pierson holds a bachelor's degree in theatre arts, two master's degrees in education and several teaching credentials. In 1987, the CSULB College of Education presented her with its Distinguished Alumna Award, and in 2010, she was the recipient of the CSULB President's Distinguished Service Award. In 2012, in recognition of her service to and support of the university - including as a past member of the CSULB Alumni Association and as a donor to the Rainey-Pierson Scholarship - CSULB named Residence Hall C in Hillside College "The Naomi Rainey House."

In recognition of her extraordinary achievements as an educator, activist and advocate - which have allowed her to serve as an example of CSULB's aspirations for its diverse student body - the Board of Trustees of the California State University and California State University, Long Beach are proud to confer upon Ms. Naomi Rainey-Pierson the honorary degree of Doctor of Humane Letters.

Our Keynote

MAXINE WATERS

Congresswoman Maxine Waters is considered by many to be one of the most powerful women in American politics today. She has gained a reputation as a fearless and outspoken advocate for women, children, people of color and the poor.



Maxine Waters was born in St. Louis, Missouri, the fifth of 13 children reared by a single mother. She began working at age 13 in factories and segregated restaurants. After moving to Los Angeles, she worked in garment factories and at the telephone company. She attended California State University at Los Angeles, where she earned a Bachelor of Arts degree. She began her career in public service as a teacher and a volunteer coordinator in the Head Start program.

Elected in November 2018 to her fifteenth term in the U.S. House of Representatives with more than 70 percent of the vote in the 43rd Congressional District of California, Congresswoman Waters represents a large part of South Los Angeles including the communities of Westchester, Playa Del Rey, and Watts and the unincorporated areas of Los Angeles County comprised of Lennox, West Athens, West Carson, Harbor Gateway and El Camino Village. The 43rd District also includes the diverse cities of Gardena, Hawthorne, Inglewood, Lawndale, Lomita and Torrance.

Congresswoman Waters made history as the first woman and first African American Chair of the House Financial Services Committee. An integral member of Congressional Democratic Leadership, Congresswoman Waters serves as a member of the Steering & Policy Committee and is the Co-Chair of the bipartisan Congressional Task Force on Alzheimer's Disease. She is also a member of the Congressional Progressive Caucus, and member and past chair of the Congressional Black Caucus.

She is married to Sidney Williams, the former U.S. Ambassador to the Commonwealth of the Bahamas. She is the mother of two adult children, Edward and Karen, and has two grandchildren.

Our Keynote

DENISE YOUNG SMITH

Denise Young Smith recently closed a two-decade career with Apple and has since been serving in residencies and advising in academia; at Cornell Tech (Cornell Ithaca's graduate school tech campus in Manhattan), at Colorado College, and at various Historically Black Colleges and Universities. A key Cultural Influencer, she advises and teaches on the imperative of true diversity, representation, inclusion, and humanity in technology, Denise held a variety of executive roles at Apple, including leading the design of the talent and cultural experience for the company's retail store initiative, taking the chain to over 400 stores globally before being promoted to the Chief HR role, reporting to Apple's CEO, Tim Cook. She also served as Apple's first ever Vice President of Inclusion and Diversity, leading the company's efforts to see its full ecosystem become as inclusive as possible.

Denise has been named a "Most Powerful Woman" by Ebony Magazine and Black Enterprise, has been named one of "100 Most Influential in Silicon Valley" by Business Insider, and has been featured in Fortune's "Most Powerful Women" issue. She currently serves on a public company board, a private company retailer, and non-profit arts board. She has served as an advisor for The Howard Schultz family Foundation, as well as The Doug Williams Center for Race and Politics in Sports.

Truly living at the intersection of technology, humanity and art, Denise last year was named Chair of the Board of SFJAZZ, the premiere arts organization featuring Jazz and Black American music, artists, and educational programming. Additionally, Denise is a classically trained soprano who has graced local and international recital halls including Carnegie's Weill Hall, Palace of Fine Arts, and SFJazz. She recently released a debut album under her own Blue Organza Productions, and continues to tell the stories that need to be told.





Thank You

For your endless devotion to making a difference on this campus, to the Black community, and for influencing the future of various students that will thrive due to your perseverance and passion for change. Your ability to lead with compassion and integrity is an example to follow. Words can neither qualify nor quantify the gratitude we have for your ongoing work and commitment to all.

WE HONOR YOU

DR. JOHN HAMILTON



BLACK ALUMNI SCHOLARSHIP GALA

CONNECTING TO CAMPUS & *Building Community*



Dr. John Hamilton

ACCESS AND RETENTION

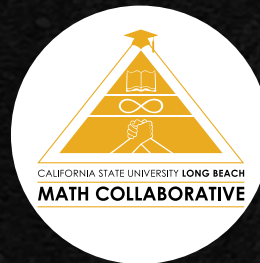
Access & Retention in the Division of Student Affairs is focused on actively working to remove barriers to accessing education and engaging students to ensure they retain and meet their educational goals, we are dedicated to serving all students and working across campus and partnering with the greater community.



Assessment & Evaluation



California Student Opportunity and Access Program



CSULB- LBUSD Math Collaborative



CSULB Village



Dream Success Center



Early Academic Preparation



Educational Opportunity Program



Guardian Scholars

ACCESS & RETENTION CONTINUED...



Men's Success Initiative



Office of Multicultural Affairs



Pregnant & Parenting



Summer Bridge Program



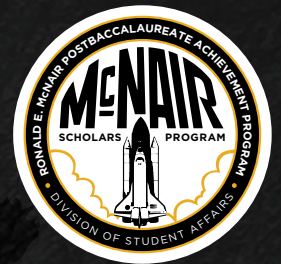
Testing



TRIO Educational Opportunity Center



TRIO Educational Talent Search



TRIO McNair Scholar's Program



TRIO Student Support Services Program



TRIO Upward Bound



University Outreach & School Relations



Women's Gender & Equity Center



BLACK ALUMNI SCHOLARSHIP GALA

CONNECTING TO CAMPUS & *Building Community*



Dr. Beth Lesen

STUDENT AFFAIRS

The Student Affairs Division supports the holistic development of students to enter, progress through, and graduate from CSULB by providing programs and services and utilizing high-impact practices that encourage access and retention, health and wellness, and engagement for all students.



ASSOCIATED STUDENTS INC.



ASI Beach Pantry



ASI Business Office



ASI Government



ASI Beach Pride Events



Isabel Patterson Child Development Center



Student Recreation & Wellness Center

HEALTH & WELLNESS



Accessible Instructional Materials (AIM) Center



Alcohol, Tobacco & Other Drugs Program



Basic Needs



Bob Murphy Access Center (BMAC)



Cal Fresh Outreach Program



Counseling & Psychological Services



Project Ocean



Student Health Services

HOUSING AND RESIDENTIAL LIFE



Housing & Residential Life



STUDENT ENGAGEMENT



STUDENT AFFAIRS

Campus Rules & Regulation



Career Development Center



CARES Team



Club Sports & Recreation



Dean of Students Office



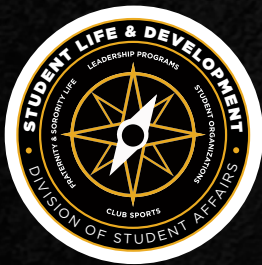
First-Year Beach Connections



Parent & Family Orientation



Student Conduct & Ethical Development



Student Life & Development



Student Orientation, Advising, & Registration



Veterans Services

OTHER PROGRAMS AND SERVICES



Access & Retention



Welcoming Accountable Voices in Education



DSA Communications



Free Speech

March 1, 2022

Dear Black Alumni Scholarship Donors,

I am sincerely appreciative of your contribution to the success of my academic journey. I am honored to have been awarded the Fall 2021 Black Alumni Scholarship. I am humbled by your kindness and generosity.

I am currently majoring in Sociology and maintaining a 3.367 GPA. Upon graduation, I plan to attend graduate school and pursue a MSW degree that would enable me to seek a career with an organization that supports young, Black men and women. I hope to one day be able to provide support to other Black people as I have received your support when it was most needed. This scholarship has enabled me to reduce the stress of being a disabled student with limited financial resources. Due to your generous contribution, I am able to devote more time to studying. I am also able to spend more time with my nephew who I am in the process of adopting. I am fully aware of the influence of my education on him at such an impressionable age. That makes your contribution even more special to me. Because of your support, I am even closer to graduating next semester.

With overwhelming appreciativeness,

Deondray Woods

Deondray Woods
15357 Bellflower Blvd. Apt 40
Bellflower, CA 90706



BLACK ALUMNI SCHOLARSHIP GALA



A Partner in Education

The Port of Long Beach works closely with CSULB, LBCC and LBUUSD to develop our future leaders. We're proud to support CSULB's second annual Black Alumni Scholarship Gala.

Congratulations to Harbor Commission President Steven Neal, Rashida Crutchfield, Carl Kemp and Naomi Rainey Pearson on being this year's Black Excellence Awardees.



Port of
LONG BEACH
THE PORT OF CHOICE



YOUR FUTURE IS NOW

Ranked in the top 16 percent of universities for student achievement and upward social mobility, the California State University is the nation's largest four-year university and the most significant transformational force for empowering students and their communities.

To learn more about the transformative power of a college degree, visit: [CALSTATE.EDU](https://calstate.edu)

BAKERSFIELD • CHANNEL ISLANDS • CHICO • DOMINGUEZ HILLS • EAST BAY • FRESNO • FULLERTON
HUMBOLDT • LONG BEACH • LOS ANGELES • MARITIME • MONTEREY BAY • NORTHRIDGE • POMONA
SACRAMENTO • SAN BERNARDINO • SAN DIEGO • SAN FRANCISCO • SAN JOSE • SAN LUIS OBISPO
SAN MARCOS • SONOMA • STANISLAUS

Celebrating those who strengthen our community

Dignity Health - St. Mary Medical Center joins CSULB in celebration of the city's rich cultural diversity. Congratulations to Naomi Rainey Pierson for her leadership in championing equity and to all the honorees of the Black Scholars Gala.

dignityhealth.org/stmarymedical



Dignity Health[®]

St. Mary Medical Center

Congratulations to Long Beach Water's
Commissioner Naomi Rainey

AND TO ALL THIS YEAR'S HONOREES!



We thank Commissioner Rainey for her longtime commitment to the Long Beach community, as well as for her current service on the Board of Water Commissioners.

Long Beach Water's Board of Water Commissioners is committed to the effective delivery of a reliable supply of quality water, while continually providing exceptional customer service and education in water conservation.



Long Beach Water



LiveH₂OLB.com



Long Beach Water can help you do your part to join the water-wise lifestyle.

Get water-saving tips and more at liveh2olb.com.

 @lbwater

 @LongBeachWater

 @lbwater



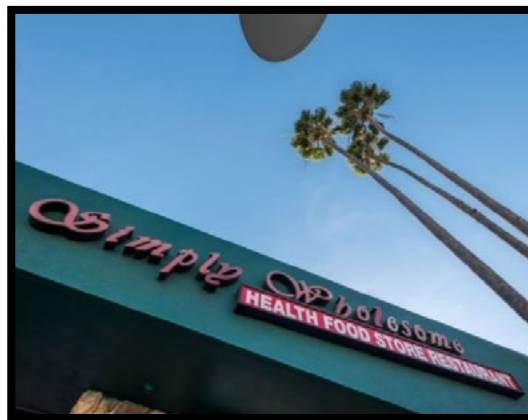
Simply Wholesome®

PERCELL KEELING SR. MEMORIAL SCHOLARSHIP AWARD
FOR ACADEMIC ACHIEVEMENT, COMMUNITY SERVICE AND ATHLETIC PARTICIPATION

Simply Wholesome has been serving the Los Angeles community since the early 1980s. Housed in a historical landmark, we provide our community with the proper resources to live a healthy, creative, and innovative lifestyle. Our motto focuses on “keeping you looking good and feeling good,” as we believe that our business is a genuine reflection of this community.

When we become unapologetically intentional about our vision, our boundaries, our beliefs and our standard, life changes tremendously. We walk in a renewed path of purpose.

Congratulations to the 2022 honorees, we are all steady rising.



OPEN DAILY:
STORE & RESTAURANT: 9AM TO 9PM

4508 WEST SLAUSON AVENUE LOS ANGELES, CA. 90043

WWW.SIMPLYWHOLESOME.COM | FOLLOW US ON INSTAGRAM: @SIMPLYWHOLESOME

Congratulations, Rashida!



We're proud the
2022 CSULB Black Alumni Gala
is honoring

Dr. Rashida Marie Crutchfield,

Associate Professor, School of Social Work
Director, The Center for Equitable Higher Education
California State University, Long Beach,

as its *Change Agent Alumna*.

We stand with her in support of African American
scholars at California State University, Long Beach.

—Jim Crutchfield & Becky Hoover, Bob Crutchfield & Susan Pitchford,
Danielle Crutchfield White & Tally White, Bernice Crutchfield & Brandon Crutchfield

The Carpenter Center is honored to be one of the co-sponsors of the 2nd Annual Black Alumni Scholarship Gala, and to support the Black Resource Center and the next generation of scholars.



Rashida Crutchfield
Change Agent Alumna



Carl Kemp
Alumnus of the Year



Steven Neal
Community Partner
of the Year



Naomi Rainey Pierson
Alumna of the Year

**Congratulations to this
year's honorees!**

The Carpenter Center invites you to our upcoming performances, including the dancer-illusionist troupe **MOMIX** on Saturday, **April 30**, and the comedic classical duo **Igudesman & Joo** on Sunday, **May 15**.

**Use promo code BASG
and save \$5**

*Limit 4 discounted tickets
per performance*



MOMIX - Alice
Sat, Apr 30 at 8pm



Igudesman & Joo
Play it Again
Sun, May 15 at 2pm



Carpenter Center
CSULB campus (off the
405 fwy at Palo Verde)

Congratulations to the Alumni honorees



Sistahs-On-Campus

Sistahs-on-Campus
proudly supports the
Black Alumni Scholarship Fund



Long Beach State
salutes the
Inaugural
Black Alumni
Scholarship Recipients

**With your support, our Black
Students will succeed.**

LONG BEACH STATE
UNIVERSITY



As proud supporters of the CSULB Black Alumni Scholarship Fund, we celebrate all efforts to support the mission of the Black Resource Center and scholarships for students. We are honored to be of service.



**Community
Partnerships**

Thank you!



The Black Resource Center and the Office of Multicultural Affairs celebrates the resilience, success, and heritage of the Black Community at CSU Long Beach.

We thank you for your generous contributions that allow our office to support the academic and social needs of our Black students.

**THE BLACK
RESOURCE CENTER**

California State University Long Beach



OFFICE OF
**MULTICULTURAL
AFFAIRS**

Connect with us:



@csulboma



Multiculturalaffairs@csulb.edu



Faculty Office 3 -003



Carl Kemp
ASI President, 1995 to 1997



**ASSOCIATED
STUDENTS INC.**
LONG BEACH STATE UNIVERSITY

Associated Students, Inc. congratulates
Carl Kemp as the 2022 Alumnus of the Year.



asicsulb.org

      [@CSULBASI](https://www.instagram.com/CSULBASI)



CALIFORNIA CONFERENCE FOR EQUALITY AND JUSTICE

Dear Rashida,

You are a truth-teller.

You call us to action.

You challenge us to do more.

We honor your work & your wisdom.

Congratulations!

*from all of us at the
California Conference for Equality and Justice*

In Support of the CSULB Inaugural Black Alumni Scholarship Gala, The Educational Opportunity Program (EOP) at California State University Long Beach would like to honor its founder,

Dr. Joseph White.



The Educational Opportunity Program (EOP) at California State University Long Beach, founded in 1967 by associate professor Dr. Joseph White to provide promising minority and low-income students with admissions support, financial aid counseling, and mentorship. Dr. White's legacy continues to be vibrant across all 23 CSU campuses 50 years later. EOP at CSULB is proud to be the first program in the CSU system and will continue to support the legacy inherited to us by Dr. White.



The Career Development Center is honored to support the Black Alumni Scholarship and the mission of the Black Resource Center at California State University, Long Beach.



For student and alumni career support or to hire CSULB students and alumni, connect with us at careers.csulb.edu.



The School of Social Work at California State University, Long Beach congratulates

Dr. Rashida Crutchfield, Associate Professor

As the recipient of the 2022 Black Excellence Award for Change Agent Alumna.

We thank you for your hard work and dedication.



**Best Wishes
on the
2nd Annual Black Alumni Scholarship Gala**



**Long Beach Alumnae Chapter
Delta Sigma Theta Sorority, Inc.**

33RD ANNUAL
LONG BEACH
Jazz FESTIVAL

AUGUST 12-14, 2022

RAINBOW LAGOON PARK | 400 E Shoreline Dr., Long Beach, CA
(Located on Shoreline Dr. and Linden - adjacent to the Long Beach Convention Center)



LEDISI



AVERAGE WHITE BAND



GERALD ALBRIGHT



JONATHAN BUTLER



SERGIO MENDES



DAMIEN ESCOBAR



ERIC DARIUS



KANDACE SPRINGS

AND MORE TO BE ANNOUNCED



Link for tickets: <https://www.showpass.com/o/rainbow-promotions/>

RAINBOW PROMOTIONS, LLC

562.424.0013

WWW.LONGBEACHJAZZFESTIVAL.COM





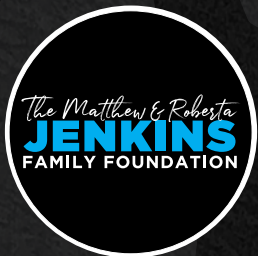
BLACK SCHOLARS

HONOR THE LIVES OF THOSE TAKEN TOO SOON

Ma'Khia Bryant, Daunte Demetrius Wright, Marvin David Scott III, Patrick Lynn Warren Sr., Vincent "Vinny" M. Belmonte, Angelo Quinto, Andre Maurice Hill, Casey Christopher Goodson Jr., Angelo "AJ" Crooms, Sincere Pierce, Marcellis Stinnette, Jonathan Dwayne Price, Dijon Durand Kizzee, Rayshard Brooks, Carlos Carson, David McAtee, Tony "Tony the Tiger" McDade, George Perry Floyd, Dreasion "Sean" Reed, Michael Brent Charles Ramos, Daniel T. Prude, Breonna Taylor, Manuel "Mannie" Elijah Ellis, William Howard Green, John Elliot Neville, Atatiana Koguice Jefferson, Elijah McClain, Ronald Greene, Javier Ambler, Sterling Lapree Higgins, Gregory Lloyd Edwards, Emantic "EJ" Fitzgerald Bradford Jr., Charles "Chop" Roundtree Jr., Chinedu Okobi, Anton Milbert LaRue Black, Botham Shem Jean, Antwon Rose Jr., Saheed Vassell, Stephen Alonzo Clark, Dennis Plowden Jr., Bijan Ghaisar, Aaron Bailey, Charleena Chavon Lyles, Fetus of Charleena Chavon Lyles (14-15 weeks), Jordan Edwards, Chad Robertson, Deborah Danner, Alfred Olango, Terence Crutcher, Terrence LeDell Sterling, Korryn Gaines, Joseph Curtis Mann, Philando Castile, Alton Sterling, Bettie "Betty Boo" Jones, Quintonio LeGrier, Corey Lamar Jones, Jamar O'Neal Clark, Jeremy "Bam Bam" McDole, India Kager, Samuel Vincent DuBose, Sandra Bland, Brendon K. Glenn, Freddie Carlos Gray Jr., Walter Lamar Scott, Eric Courtney Harris, Phillip Gregory White, Mya Shawatza Hall, Meagan Hockaday, Tony Terrell Robinson, Janisha Fonville, Natasha McKenna, Jerame C. Reid, Romain Brisbon, Tamir Rice, Akai Kareem Gurley, Tanisha N. Anderson, Dante Parker, Ezell Ford, Michael Brown Jr., John Crawford III, Tyree Woodson, Eric Garner, Dontre Hamilton, Victor White III, Gabriella Monique Nevarez, Yvette Smith, McKenzie J. Cochran, Jordan Baker, Andy Lopez, Miriam Iris Carey, Barrington "BJ" Williams, Jonathan Ferrell, Carlos Alcis, Larry Eugene Jackson Jr., Kyam Livingston, Clinton R. Allen, Kimani "Kiki" Gray, Kayla Moore, Jamaal Moore Sr., Johnnie Kamahi Warren, Shelly Marie Frey, Darnisha Diana Harris, Timothy Russell, Malissa Williams, Noel Palanco, Reynaldo Cuevas, Charis Carter, Alesia Thomas, Shantel Davis, Sharmel T. Edwards, Tamon Robinson, Ervin Lee Jefferson, III, Kendrec McDade, Rekia Boyd, Shereese Francis, Jersey K. Green, Wendell James Allen, Nehemiah Lazar Dillard, Dante Lamar Price, Raymond Luther Allen Jr., Manual Levi Loggins Jr., Ramarley Graham, Kenneth Chamberlain Sr., Alonzo Ashley, Derek Williams, Raheim Brown, Jr., Reginald Doucet, Derrick Jones, Danroy "DJ" Henry Jr., Aiyana Mo'Nay Stanley-Jones, Steven Eugene Washington, Aaron Campbell, Kiwane Carrington, Victor Steen, Shem Walker, Oscar Grant III, Tarika Wilson, DeAunta Terrel Farrow, Sean Bell, Kathryn Johnston, Ronald Curtis Madison, James B. Brissette Jr., Henry "Ace" Glover, Timothy Stansbury, Jr., Ousmane Zongo, Alberta Spruill, Kendra Sarie James, Orlando Barlow, Nelson Martinez Mendez, Timothy DeWayne Thomas Jr., Ronald Beasley, Earl Murray, Patrick Moses Dorismond, Prince Carmen Jones Jr., Malcolm Ferguson, LaTanya Haggerty, Margaret LaVerne Mitchell, Amadou Diallo, Tyisha Shene Miller, Dannette "Strawberry" Daniels, Frankie Ann Perkins, Nicholas Heyward Jr., Mary Mitchell, Yvonne Smallwood, Eleanor Bumpers, Michael Jerome Stewart, Eula Mae Love, Arthur Miller Jr., Randolph Evans, Barry Gene Evans, Rita Lloyd, Henry Dumas

THANK YOU

To our sponsors!



For more information about how to become a sponsor:
visit: https://bit.ly/csulb_bg2022
or
contact: blackscholars@csulb.edu