

MS in Health Care Administration

At CSULB

Health Care Administration (HCA) is one of the most important and exciting areas of business and public policy. The Master of Science degree in Health Care Administration (MSHCA) at CSULB is one of four CAHME accredited programs in California. Launched in 1984 and accredited since 2004, the MSHCA at CSULB is the only place that offers both residential (traditional) and executive (accelerated) programs in California. The Programs were designed for persons with a variety of undergraduate experiences who give evidence of interest and potential for success in health care management. Both traditional and accelerated programs can be completed in just two years of study. Required courses cover the essential functions of management and critical aspects of the US health care system. Electives, tailored to students' learning goals, include courses in health care site specialization and other academic disciplines.

Learning Outcomes



Communication and Relationship Management

Acquire the ability to communicate clearly and concisely with internal and external customers, establish and maintain relationships, and facilitate constructive interactions with individuals and groups.



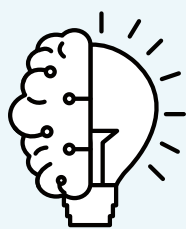
Leadership

Develop the ability to inspire individual and organizational excellence, create a shared vision and successfully manage change to attain the organization's strategic ends and successful performance.



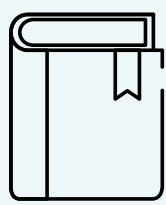
Professionalism

Align personal and organizational conduct with ethical and professional standards that include a responsibility to the patient and community, a service orientation, and a commitment to lifelong learning and improvement.



Knowledge of the Healthcare Environment

Demonstrate understanding of the healthcare system and the environment in which healthcare managers and providers function.



Business Skills and Knowledge

Apply business principles—including General Management, Organizational Dynamics and Governance, Strategic Planning and Marketing, Risk Management, Quality Improvement, and Patient Safety, etc.—to the healthcare environment.

How to Apply:

Online application through the **Cal State Apply System**

DOCUMENTS

- Statement of Intent
- Resume
- 3 Letters of Recommendation
- **No GMAT/GRE Required for Fall 2023 Applicants**

Two Programs:

TRADITIONAL

Designed for new undergraduates, beginning health care professionals, and international students who are interested in pursuing managerial positions and careers in health care industry.

ACCELERATED

Designed to prepare those with years of health care work experience who are seeking professional growth or changing a career within the health care sector.



MS-HCA
Information
Session



Cal State
Apply

For more information, please visit the HCA website @

<https://www.csulb.edu/college-of-health-human-services/health-care-administration>