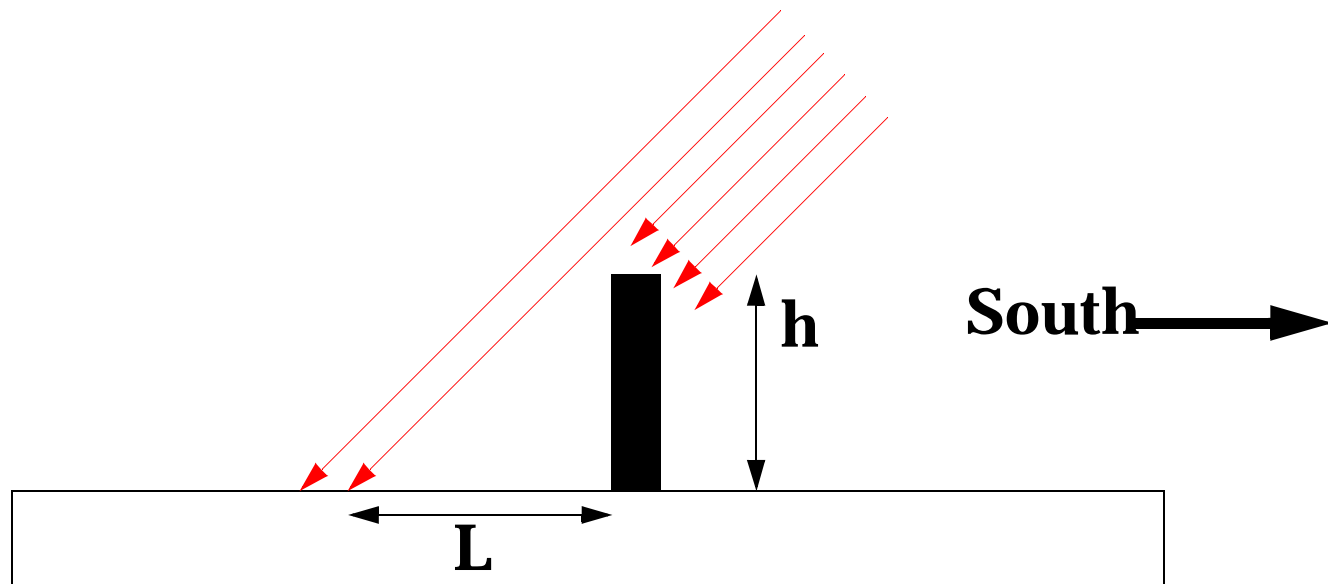


● **THExp 2**

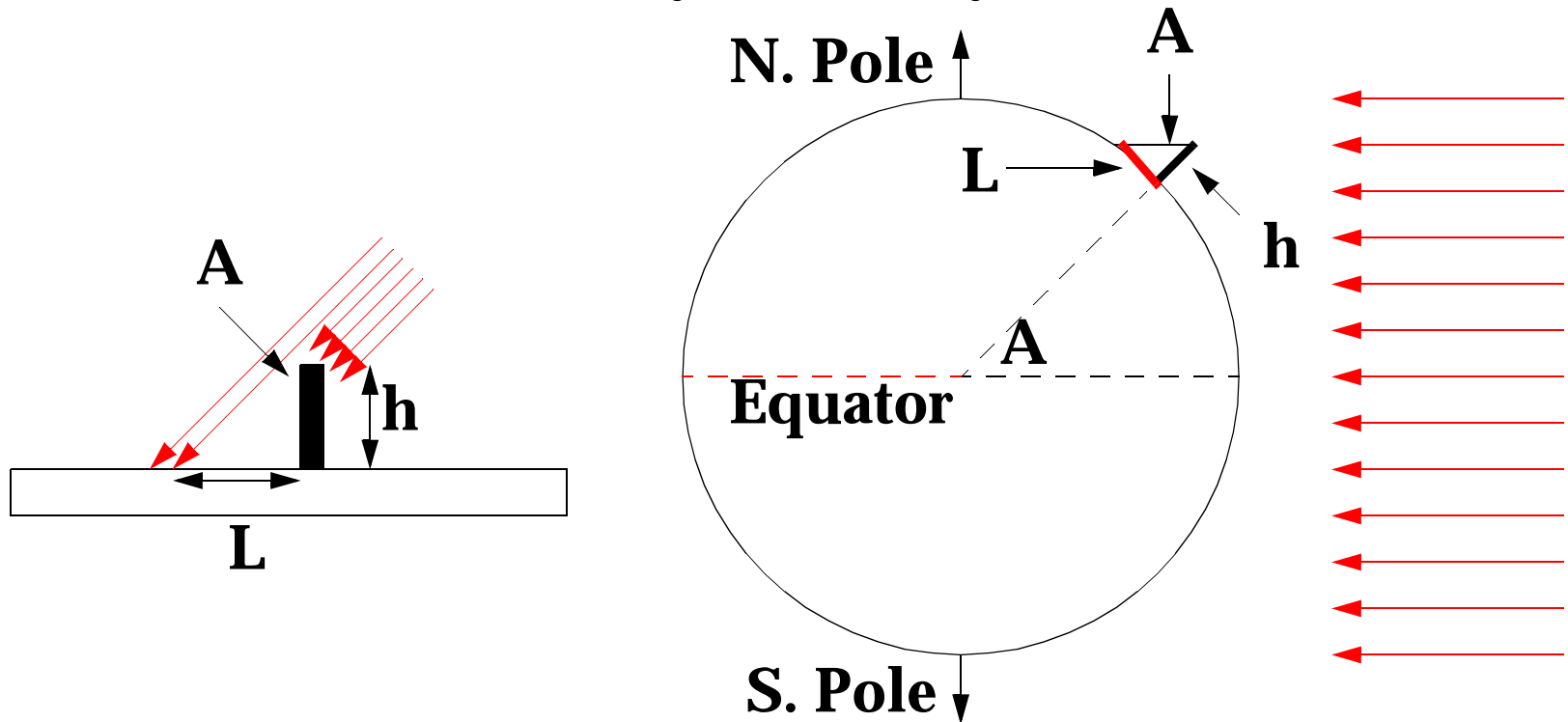
- **Autumn Equinox is Sun, March 20 **Spring Break!****
- **At 1PM, need to go outside and do the measurement**



- **h is height of object, L is length of shadow.**

- **What to do**

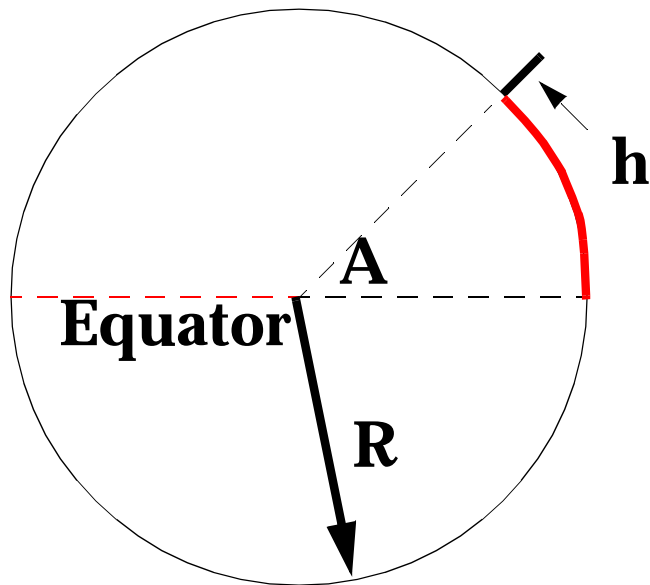
- **What do L and h tell you about your Latitude?**



- **Latitude angle $A = \text{Tan}^{-1}(L/h)$. Use Degrees!**

● **So, how big is the Earth?**

- **A proportionality will help:**



$$\frac{A}{360^{\circ}} = \frac{2350 \text{ miles}}{C}$$

$$C = 2\pi R$$

- **Find C, then find R, and report results: TExp #2.**