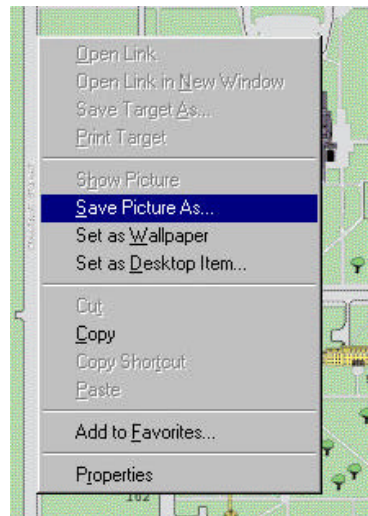


# Advanced Adobe Photoshop 5.5

These instructions tell you how to use Adobe Photoshop 5.5 to create an image map from a saved image. Part 1 explains how to find an image and save it to your computer. Part 2 explains how to change this image into an image slice. Part 3 explains how to turn this image slice into an image map. Part 4 tells the user how to use the image map that he or she has created. We assume that the reader has completed the first set of instructions for Adobe Photoshop 5.5 and is familiar with the basic elements of the application. You will need to be able to access your M drive and the Adobe Photoshop 5.5 application.

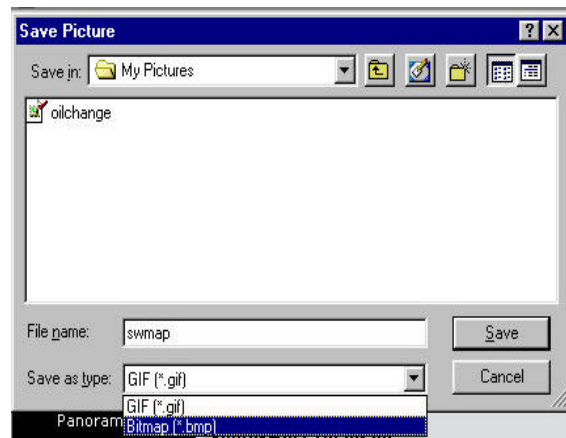
## Part 1: Copy an Image from the Internet

- 1) **Double-click** the large lowercase 'e' on your desktop to open Internet Explorer
- 2) **Browse** to the web page containing the picture you want to use.
  - If you are using this as a tutorial type  
"http://www.miami.muohio.edu/About\_Miami/Virtual\_Tour/campusmap/" into the  
"Address" field, hit "Enter."
- 3) **Right-click** on the image.
  - A menu will appear.
- 4) **Select** "Save Picture As"



## Part 1: Copy an Image from the Internet

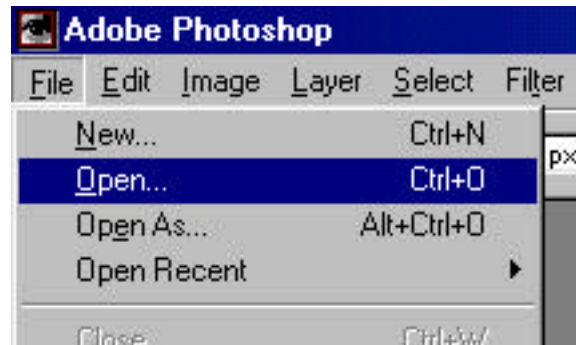
- 5) **Select** a directory from the “Save in:” field.
  - This is where you would like to save your image.
  - If you are using this as a tutorial choose your M drive.
- 6) **Enter** a file name for the image in the “File name:” field.
  - The “File name:” is arbitrary.
  - If you are using this as a tutorial type “imageSlice” as the “File name:” for your image.
- 7) **Change** the “Save as type:” menu to Bitmap (\*.bmp) from GIF (\*.gif) by clicking on the down arrow in the “Save as type:” field.
- 8) **Click** “Save.”
- 9) **Click** on the “X” box in the far upper right border of the current window.
  - This will close Internet Explorer.
- 10) Now that you have successfully found and saved an image, let’s slice it up.



## Part 2: Create an Image Slice

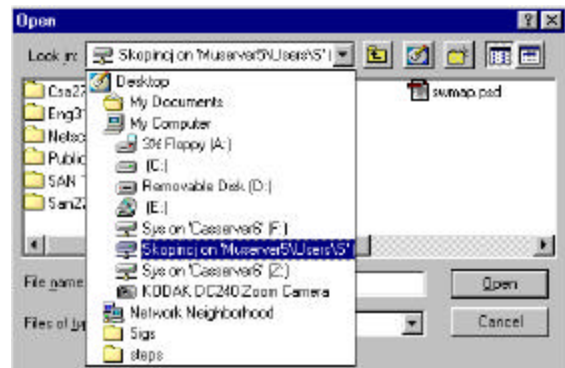
- 1) **Click** on the “Start” icon at the bottom left border of the current window.
- **Click** “Programs”
  - **Click** “Adobe”
  - **Click** “Photoshop 5.5”
  - **Click** “Adobe Photoshop 5.5”
  - The application Adobe Photoshop 5.5 will open.

- 2) **Click** “File” in the upper left menu of the Adobe Photoshop window.
- The “File” menu will drop down.



- 3) **Click** “Open” from the “File” menu.

- 4) **Browse** to the directory you saved your Internet image in from the “Look in:” field.
- If you are using this as a tutorial the directory where you saved your image is your M drive.



- 5) **Select** your image's name or icon from the correct directory.
- It will be in the large middle area of the current window.
  - If you are using this as a tutorial your image name will be “imageSlice.bmp.”

## Part 2: Create an Image Slice

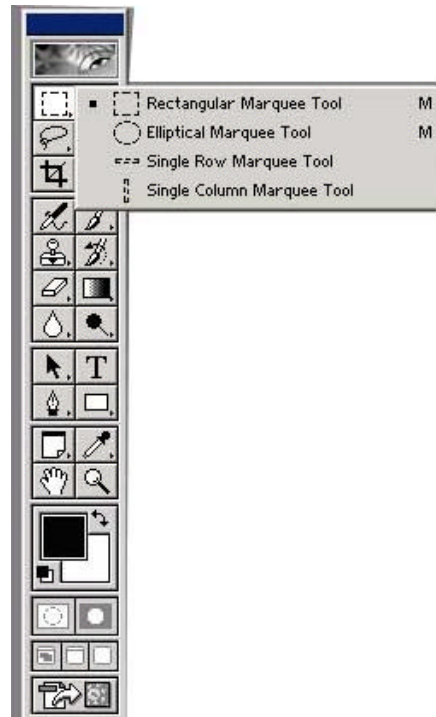
6) **Click** “Open” from the current window.

7) **Hold** down the Marquee button (shown highlighted on right) in the toolbox (the large table of tools shown on right).

8) **Select** the shape for the slice you want to create. It is pertinent that you choose the shape which best matches your image. Ask yourself, “What shape does my image look like?”

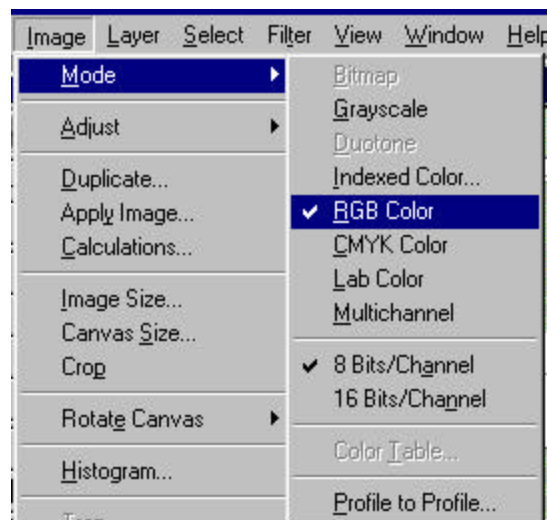
Your options are:

- Rectangular
- Elliptical
- Single Row
- Single Column



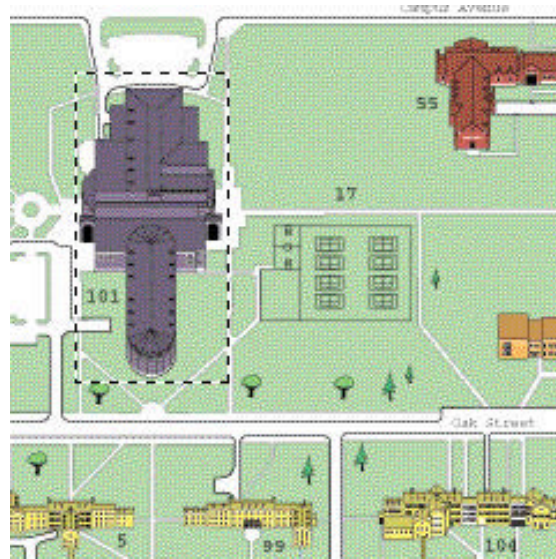
9) **Click** “Image” from the upper border of the Adobe Photoshop window.

- The “Image” menu will drop down.
- Click “Mode” from the “Image” menu.
- The “Mode” menu will drop down.
- From the “Mode” menu make sure “RGB Color” has a check to the left of it.
- If the prior is not the case, click “RGB Color” from the “Mode” menu.



## Part 2: Create an Image Slice

- 10) **Select** the area of the image you would like to make an image slice out of by:
- **Position** the mouse at the top left corner of your image.
  - **Click** and hold the mouse down.
  - **Move** the mouse to the bottom right corner of your image.
  - **Release** the mouse.
  - You will see “marching ants” confirming the image you selected.
  - If you are inaccurate on your first time try, first click outside of the wrongly selected area, but still within the image, then try again to select the correct area within the image.
  - If you are using this as a tutorial select the area around the large gray building with the “101” next to it. This is the Rec.



- 11) **Right click** anywhere within the newly selected area.
- A menu will appear.
- 12) **Select** “Layer via cut” from the new menu.
- 13) Now that you have successfully created an image slice, let’s give it a reason to exist.

## Part 3: Create an Image Map

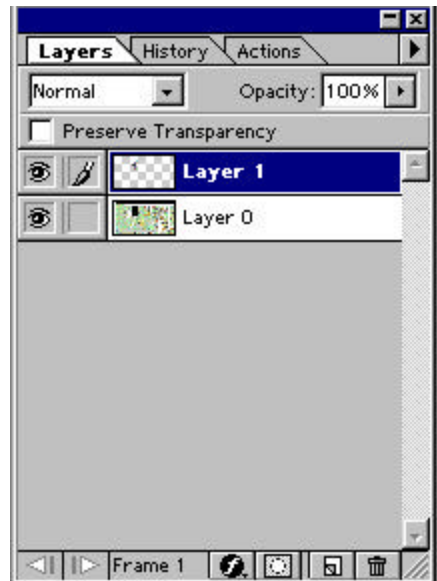
- 1) **Click** the “Jump to ImageReady” button in the toolbox.
  - This button is at the very bottom of the toolbox shown on right.



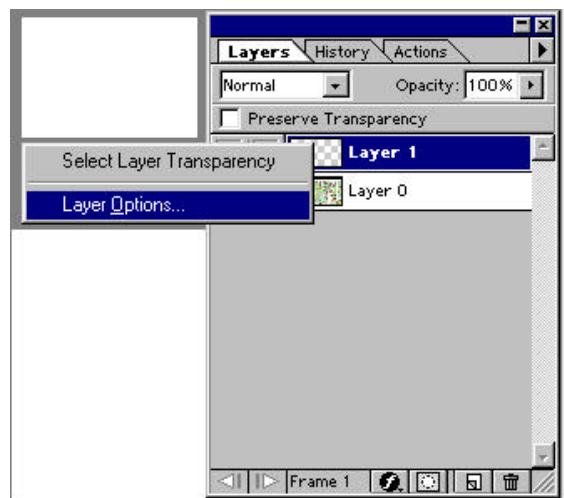
- 2) **Click** “Save as.”
- 3) **Enter** a “File name:” for the image map in the “File name:” field.
  - If you are using this as a tutorial enter “imageMap” into the “File name:” field.
- 4) **Click** “Save.”
  - ImageReady will open automatically.

## Part 3: Create an Image Map

- 5) **Find** the layers palette (shown on right).
- It is located near the bottom right half of the screen.
  - It is a small window with 3 tabs near the top labeled: Layers, History, and Actions, respectively.
  - **Click** on the “Layers” tab.
  - **Right-click** on the slice that you would like to manipulate.
  - If you only created one slice it will be called “Layer 1.”
  - Furthermore, a small icon of the slice you created will be to the left of the correct layer.
  - If you still have not selected a layer or you are using this as a tutorial, right-click on “Layer 1.”
  - A small menu will appear.



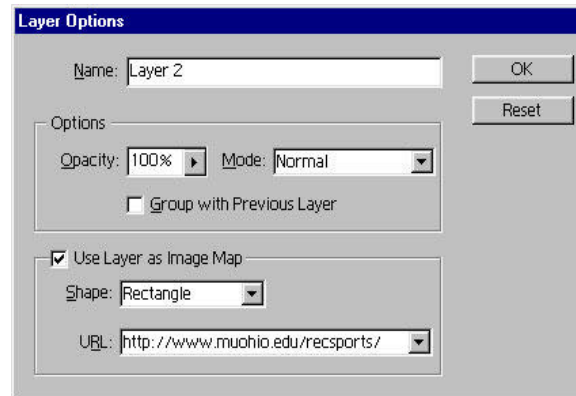
- 6) **Click** “Layer Options...” from the new menu.
- A new window will open.



## Part 3: Create an Image Map

7) **Check** the “Use layer as image map” box in the “Layer Options” window.

- A checkmark will appear.



8) **Enter** the URL into the “URL:” field.

- This will be the address of the web page that you would like this slice to map.
- If you are using this as a tutorial type
- “http://www.muohio.edu/recsports” into the “URL:” field.
- This is the site where you will be directed to after clicking the image slice.

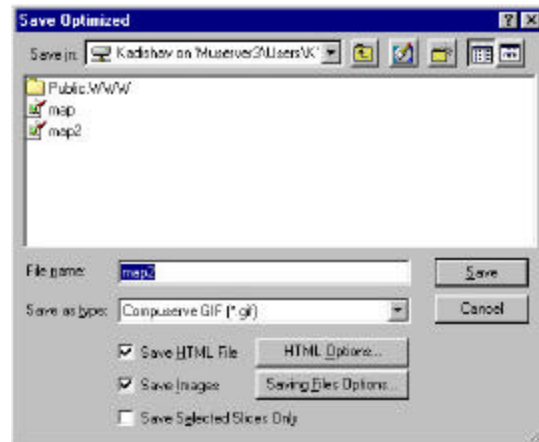
9) **Click** “OK.”

10) **Click** “File” in the upper left menu of the current window.

- The “File” menu will drop down.

## Part 3: Create an Image Map

- 11) **Select** “Save Optimized As...” from the “File” menu.
  - A new window will appear.
- 12) **Check** the “Save as HTML file” box in the new window.
- 13) **Check** the “Save Images” box also in the new window.
- 14) **Browse** to the directory where you would like to save to through the “Save in:” field.
  - If you are using this as a tutorial, browse to your M drive.
- 15) **Enter** a “File name” for the image map in the “File name:” field.
  - If you are using this as a tutorial enter “imageWeb” as the “File name.”
- 16) **Click** “Save.”
- 17) Now that you have successfully created an image map, let’s put it to some practical use.



## Part 4: Use Your Image Map

- 1) **Browse** to the directory where you have “Save Optimized As.”
  - If you are using this as a tutorial browse the “Look in:” field to your M drive.
- 2) **Click** the filename you gave your image.
  - The file will have an “.html” extension.
  - If you are using this as a tutorial, click on “imageWeb.html” in the large middle area of the current window.
- 3) **Click** “Open” from the current window.
  - A web browser will open automatically; the default is Internet Explorer.
- 4) **Click** on the area of the picture where you created your slice.
  - This will send the user to the website which you assigned in Part 3, step 8.
  - If you are using this as a tutorial, click on the large gray image with the “101” next to it, this is the Rec.
- 5) **Add** this picture to your web site to use it.
  - The image slice is automatically activated as soon as it is added.
  - The user will be directed to the website that you chose for the image.