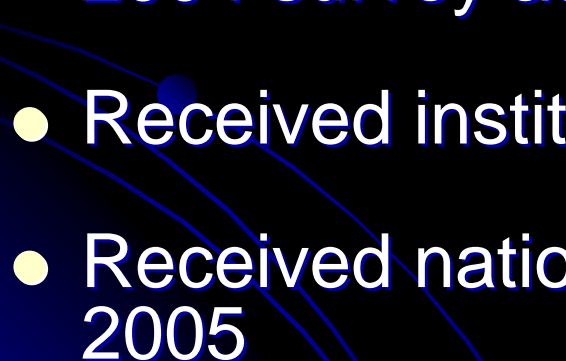


# CSULB Freshman Trends

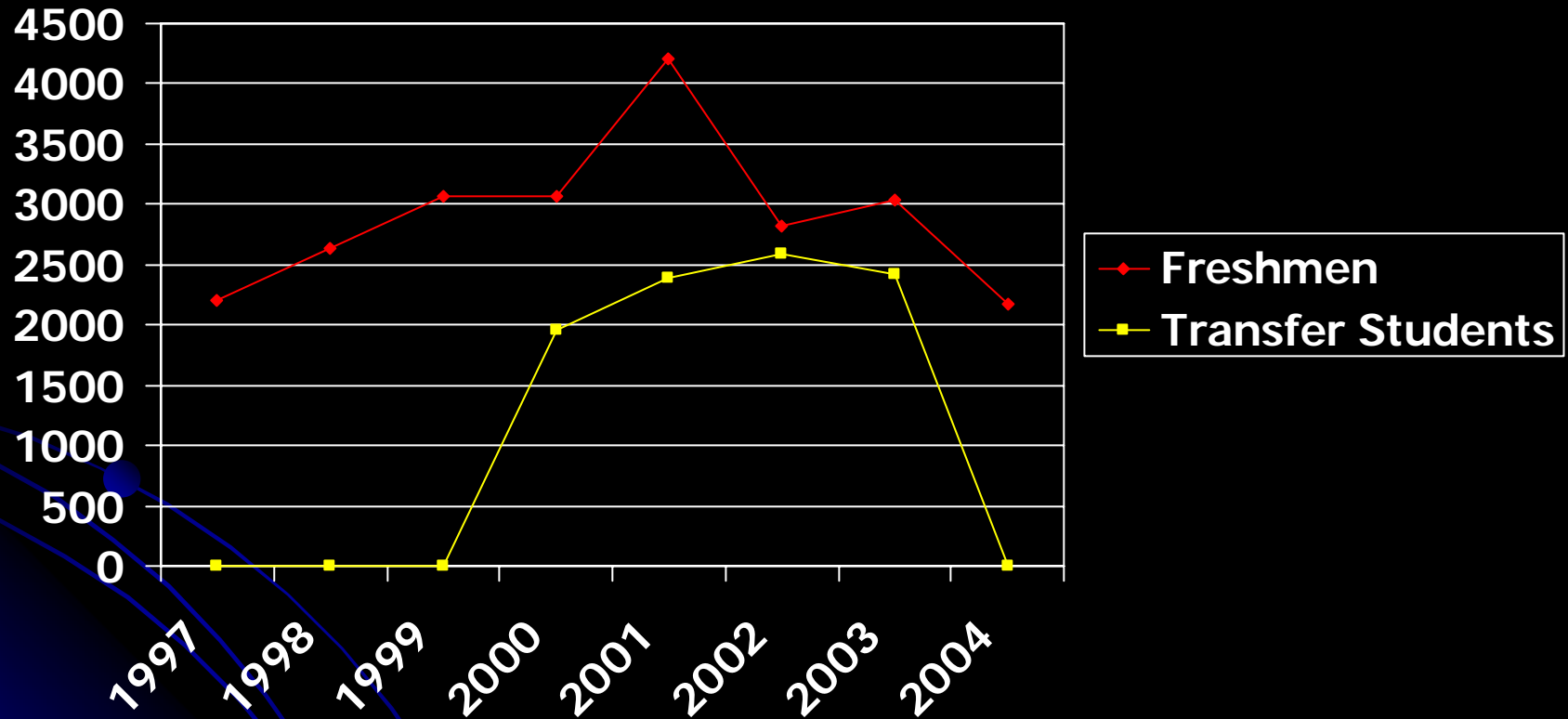
Survey Data 1997-2004



# Freshman Survey

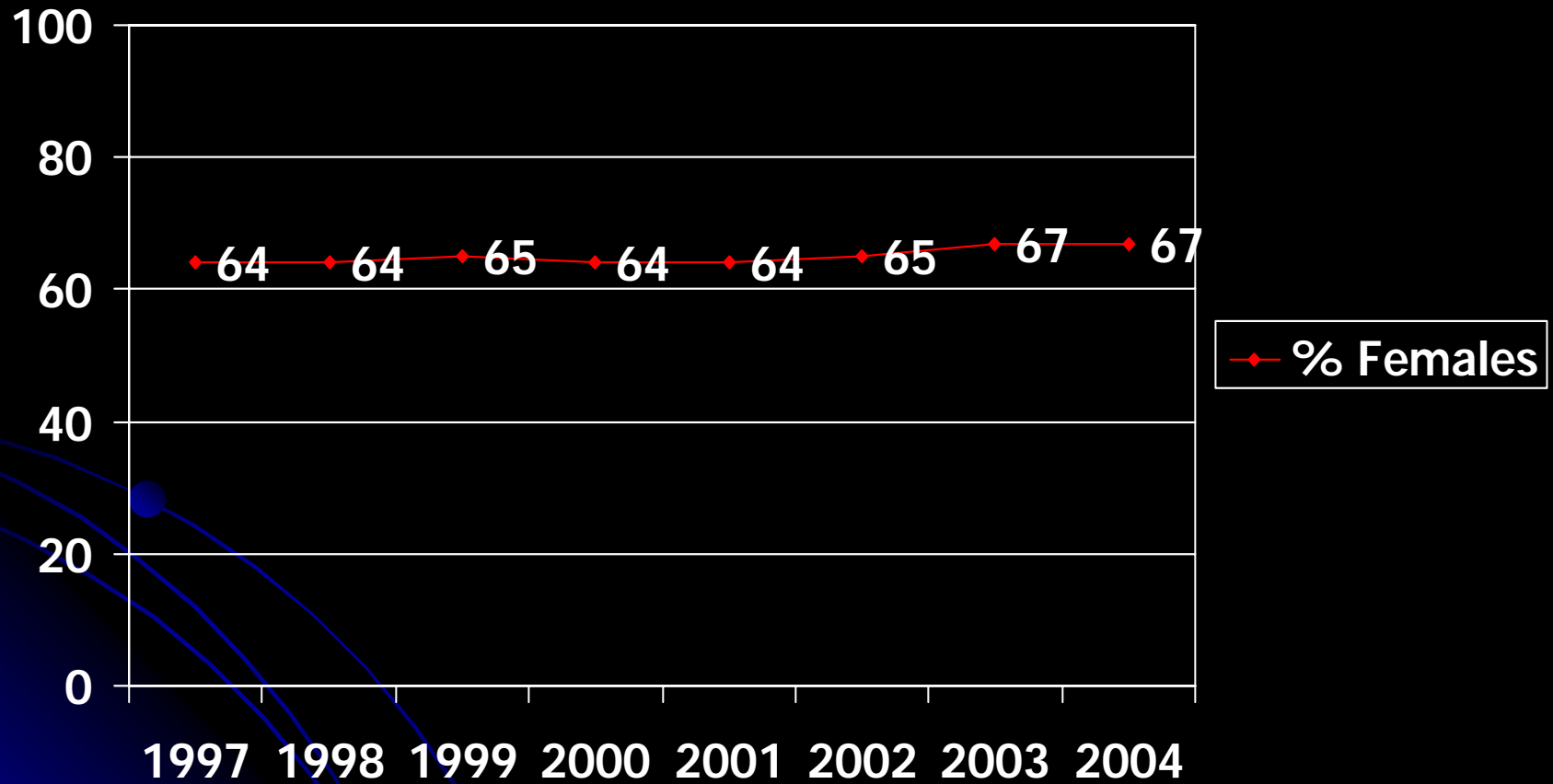
- Part of UCLA's Cooperative Institutional Research Program (CIRP), now in 39<sup>th</sup> year
  - Instrument revised annually "to reflect changing concerns of academic community"
  - 2004 survey administered during University 100
  - Received institutional data in January 2005
  - Received nationally-normed data in February 2005
- 

# Students Surveyed from 1997-2004



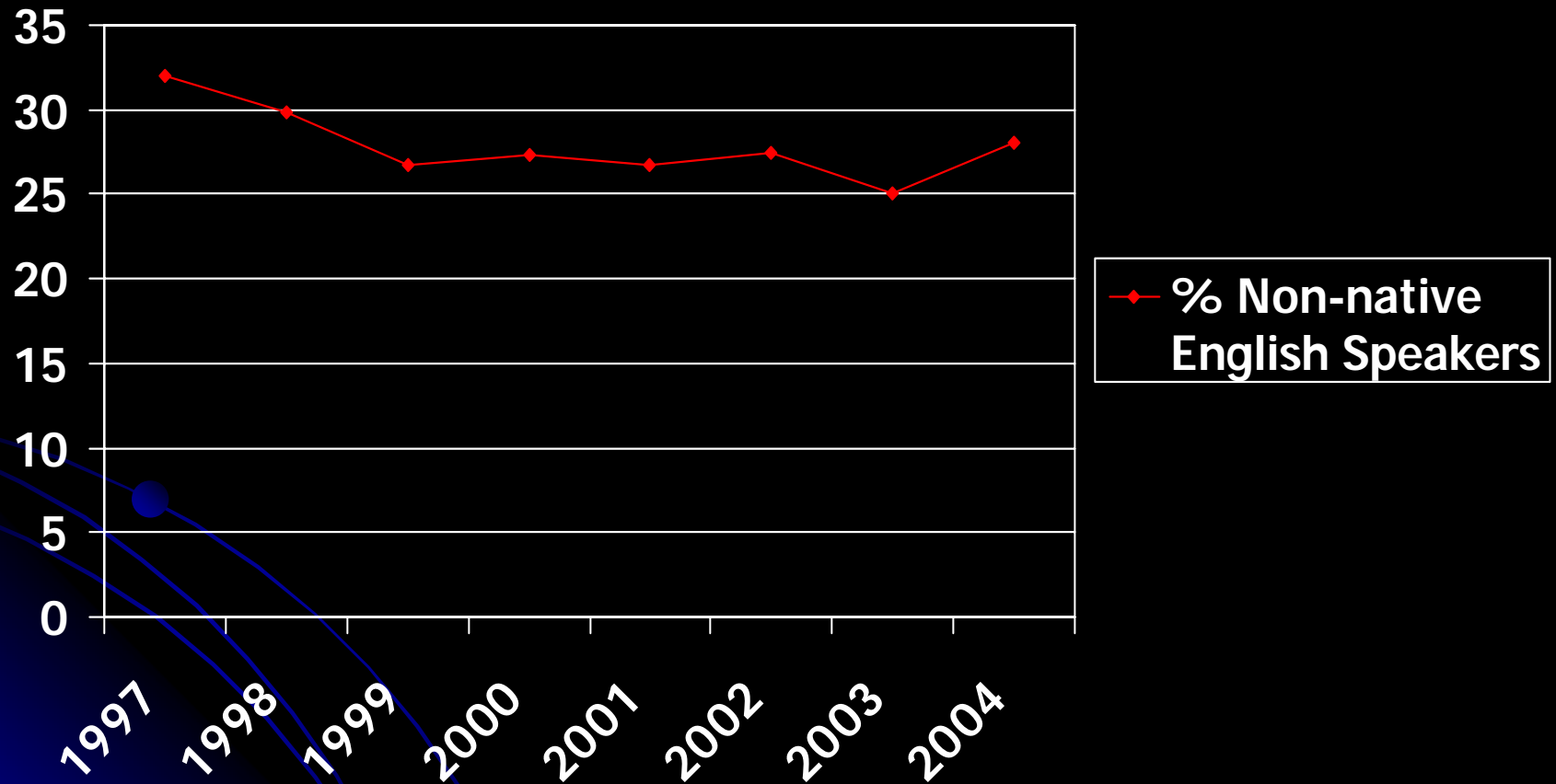
Total surveyed from 1997-2004=32,567

# Female Enrollment 1997-2004\*



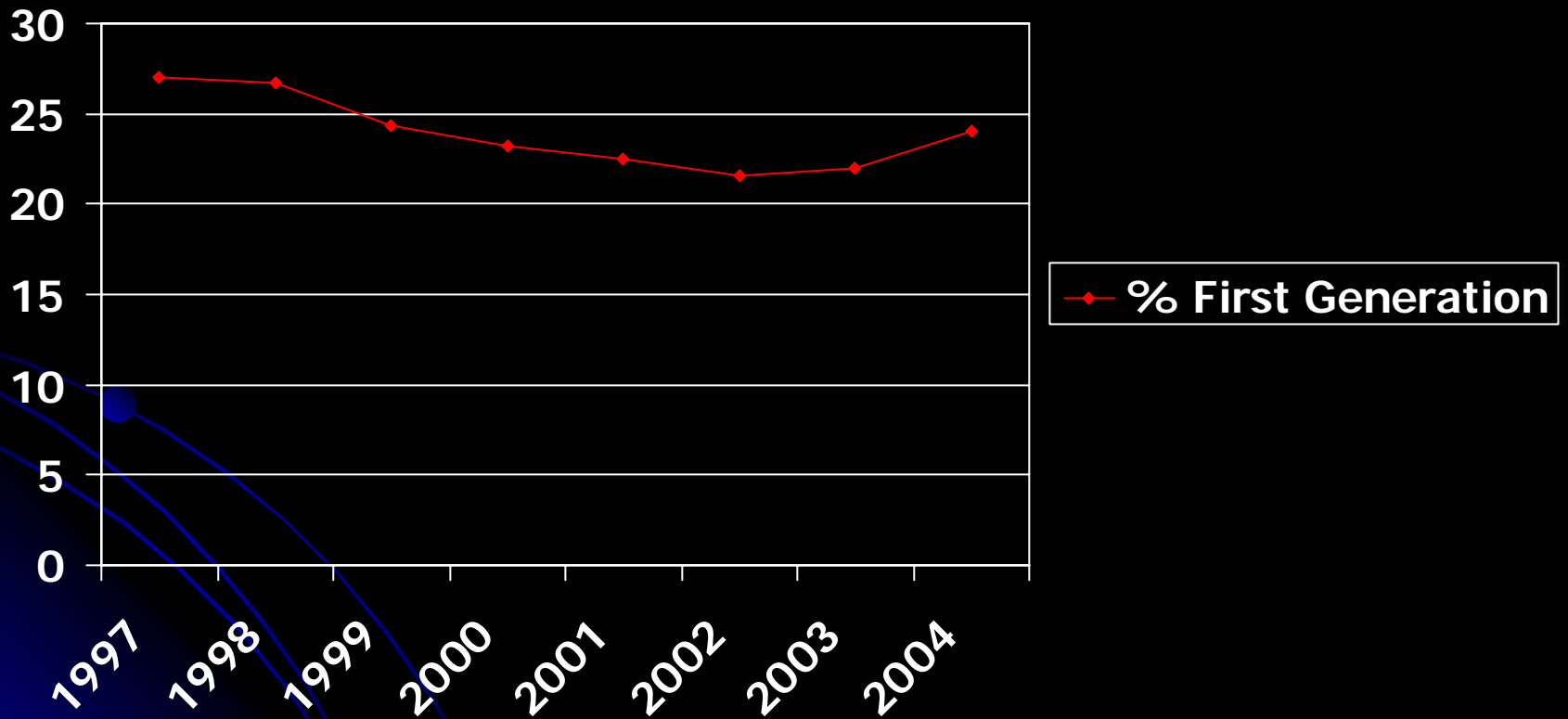
\*CSULB Freshmen 1997-2004

# Non-native English Speaker Enrollments 1997-2004\*



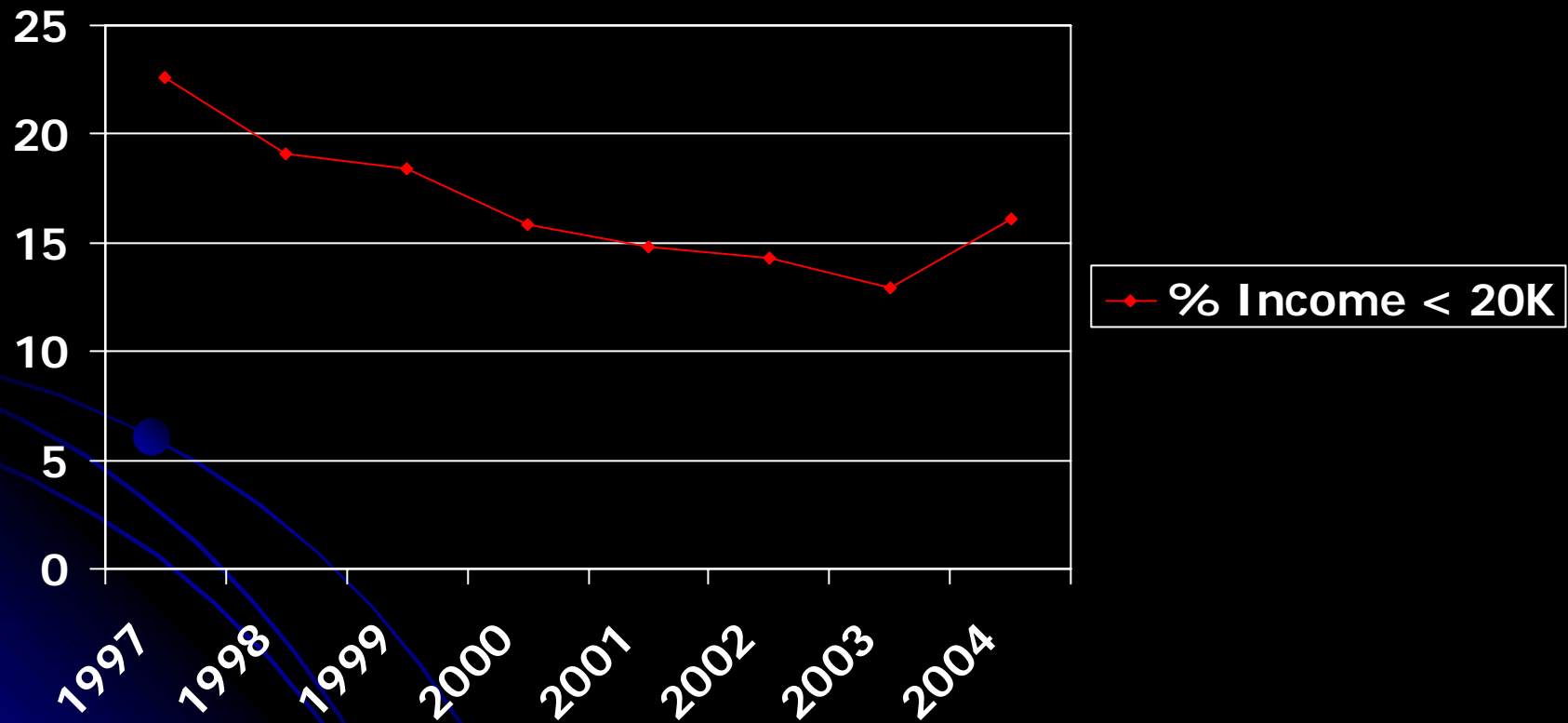
\*CSULB Freshmen 1997-2004

# First Generation College Student Enrollments 1997-2004\*



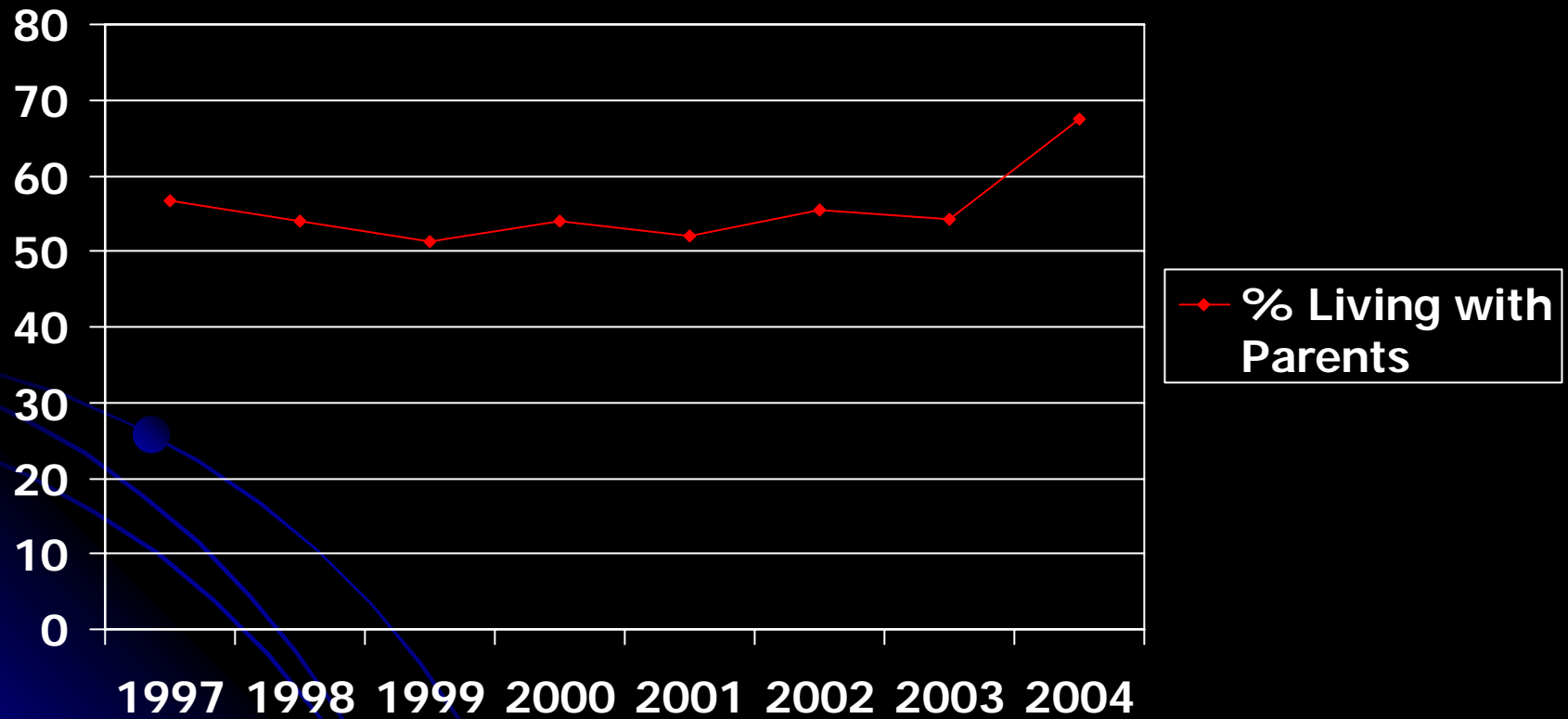
\*CSULB Freshmen 1997-2004

# Parental Income Below 20K/year 1997-2004\*



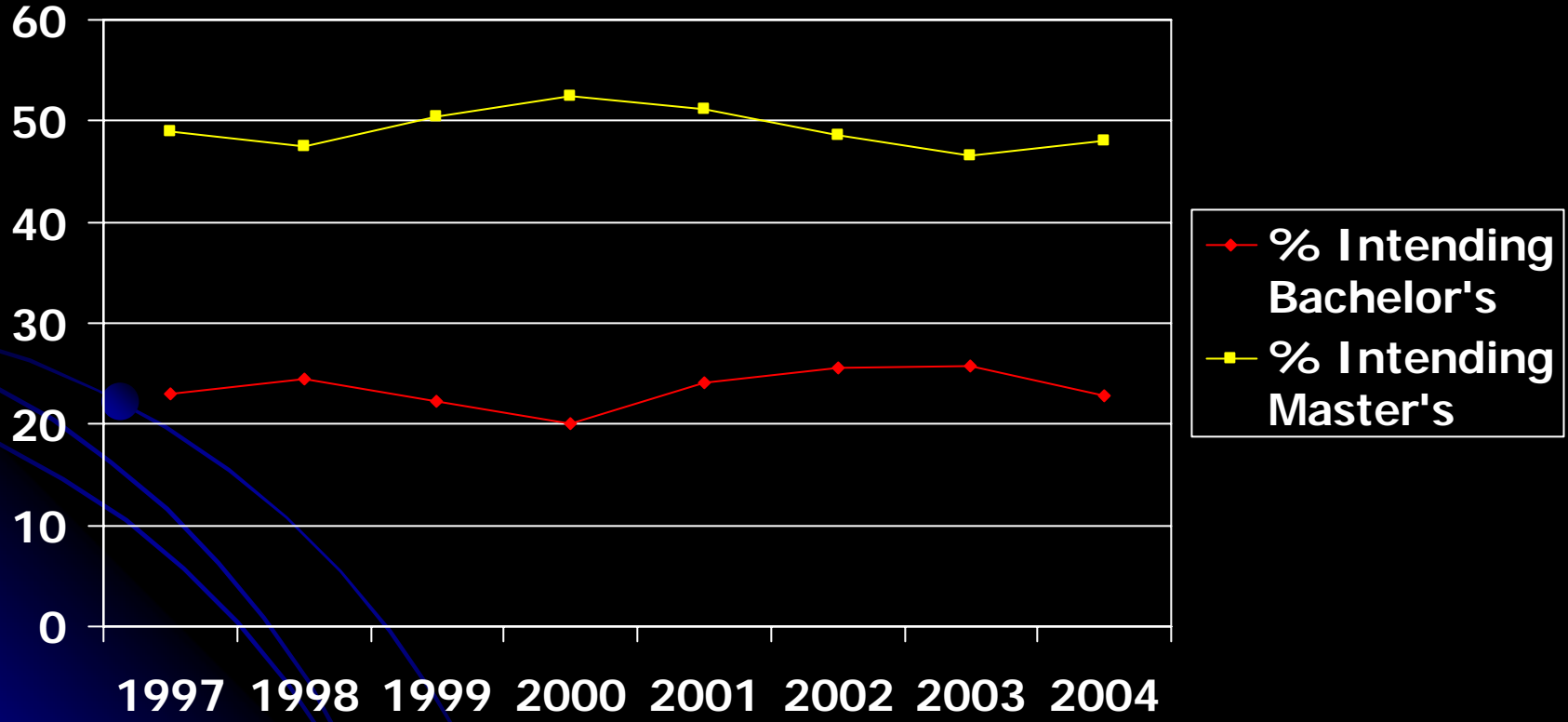
\*CSULB Freshmen 1997-2004

# Students Living with Parents 1997-2004\*



\*CSULB Freshmen 1997-2004

# Degree Aspirations 1997-2004\*



\*CSULB Freshmen 1997-2004

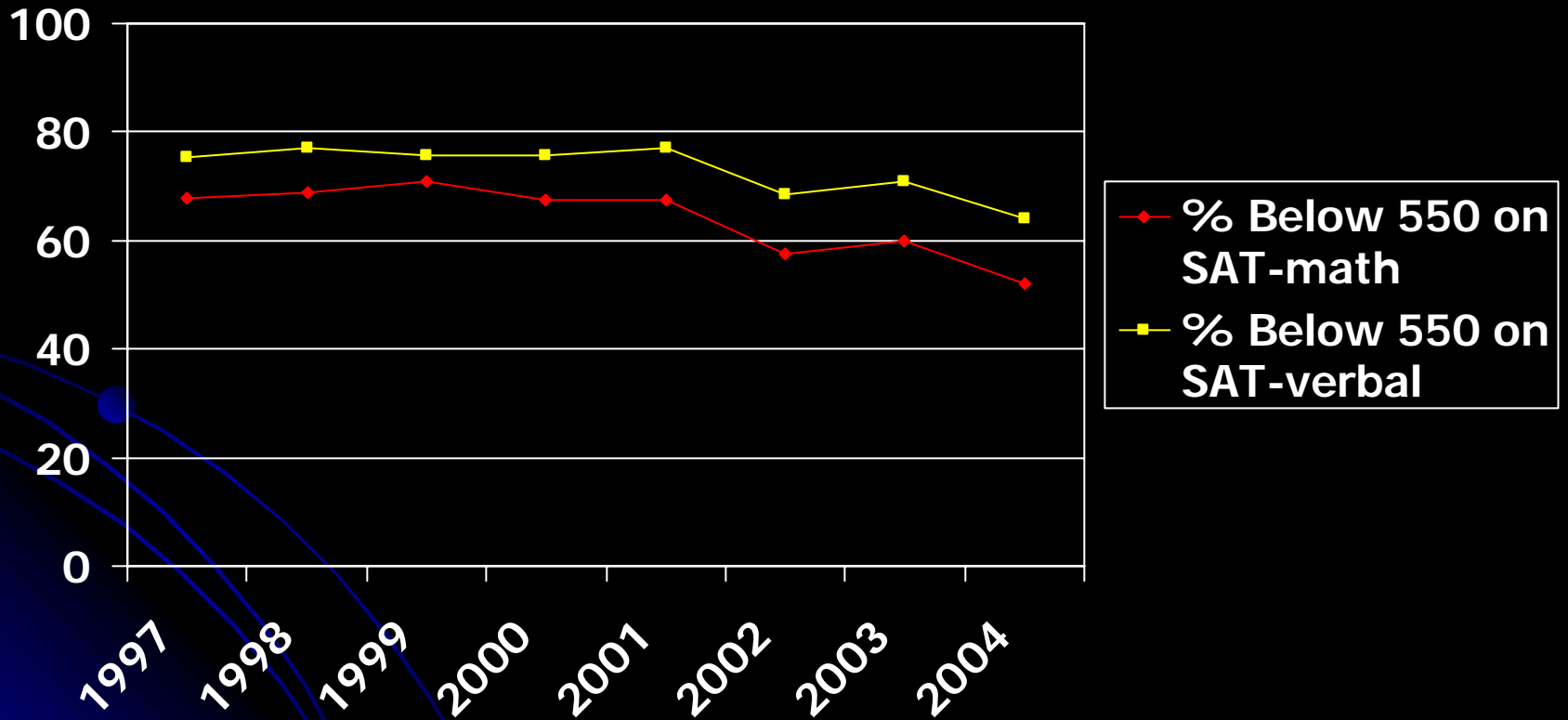
# Enrollment Management Issues\*

Some or very good chance will ↓	Percent
Change major	54.3
Change career goal	55.4
Transfer to *CSULB Freshmen 1997-2004 to another school	28.7

# How long will remain a student at CSULB?\*

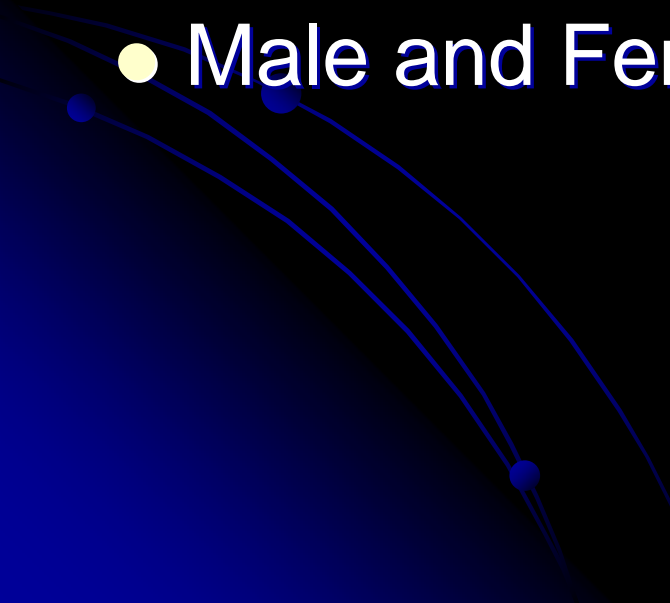
Length of time ↓	Percent
1 year	1.3
2 years	6.3
3 years	3.3
4 years	63.2
5+ years	25.9

# College Readiness 1997-2004\*

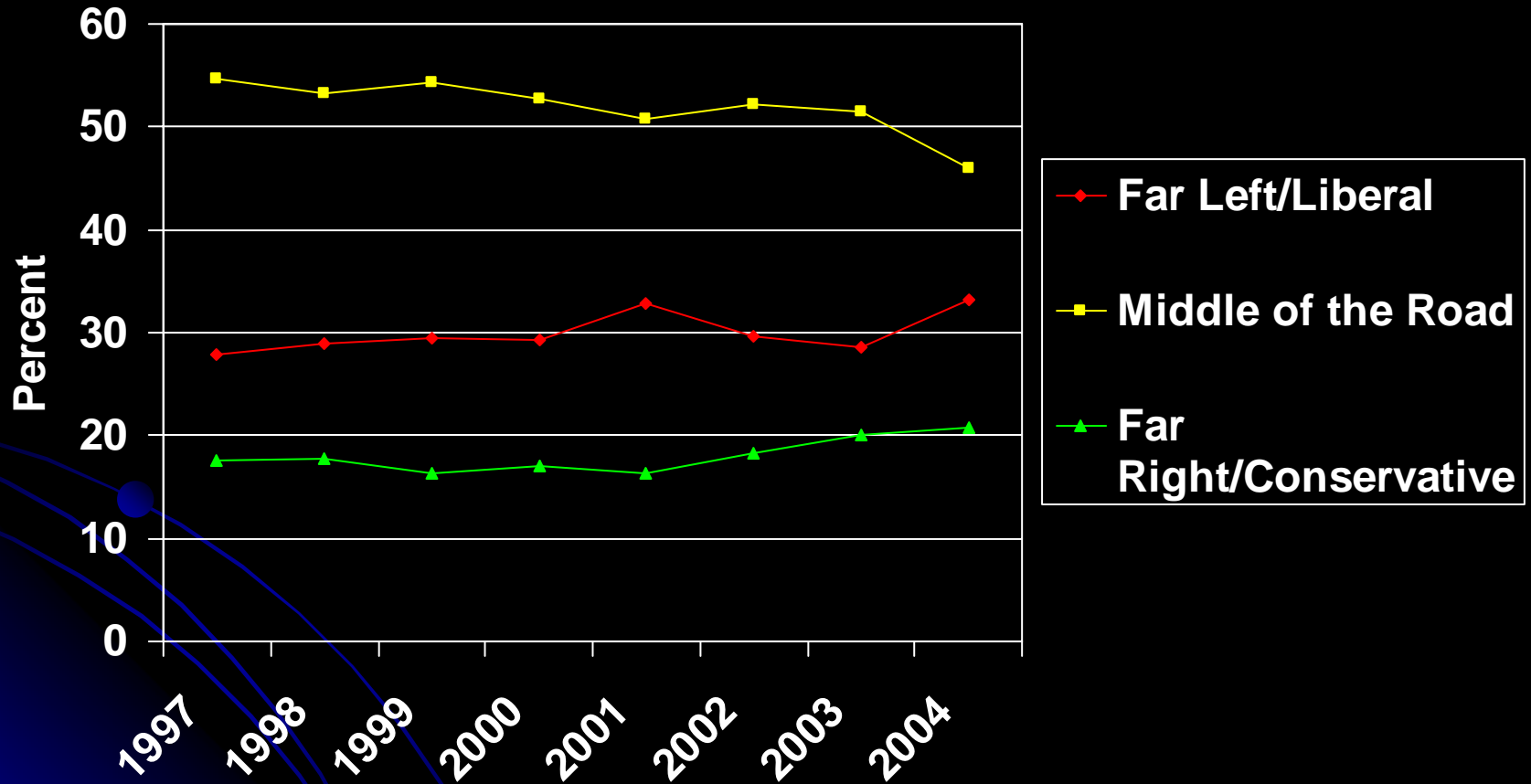


\*CSULB Freshmen 1997-2004

# Stories about Freshmen Making the News in 2004

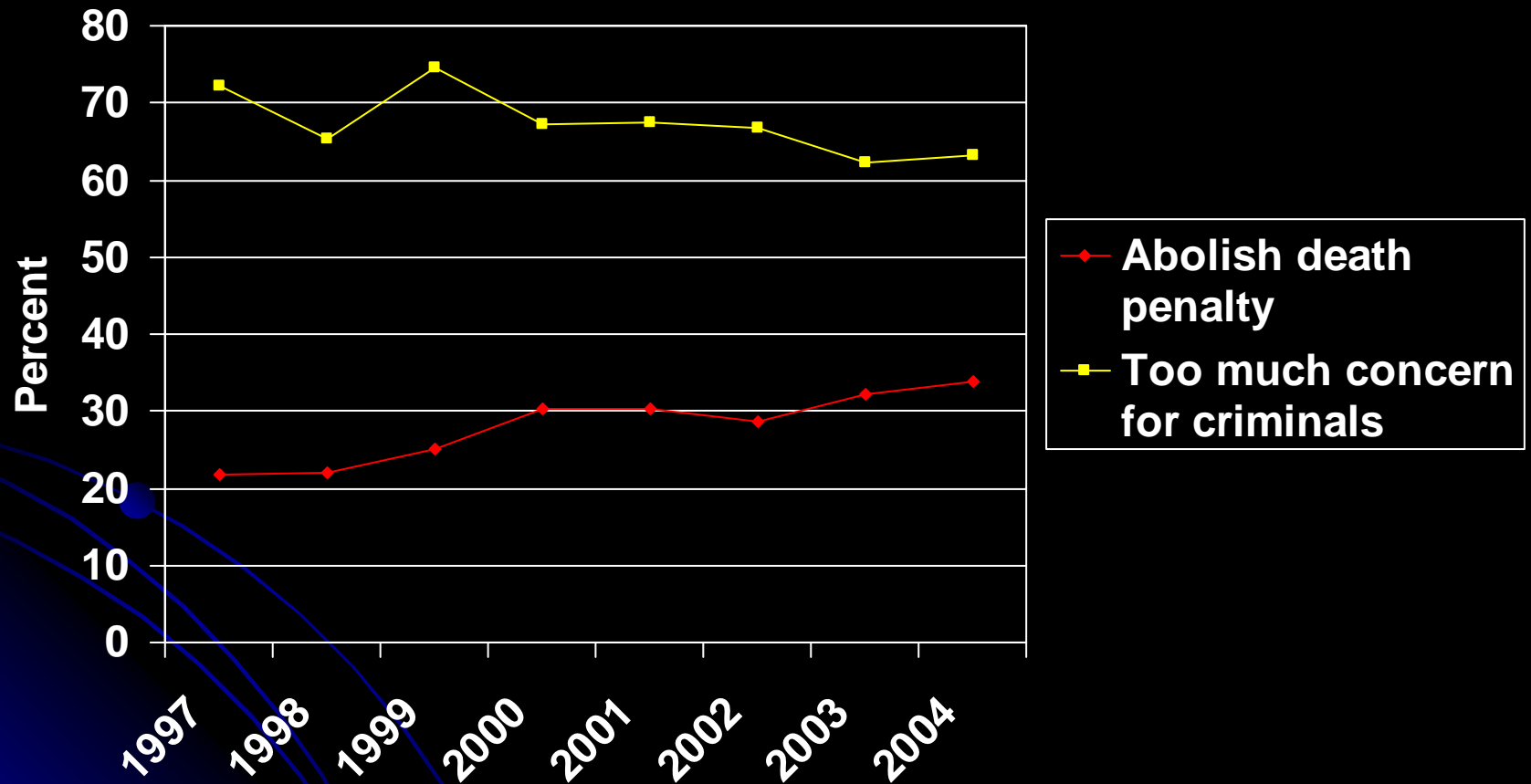
- Political Engagement
  - Use of Computers
  - Working to Pay for College
  - Male and Female Activity Differences
  - Male and Female Health Indicators
- 

# Political Views\*



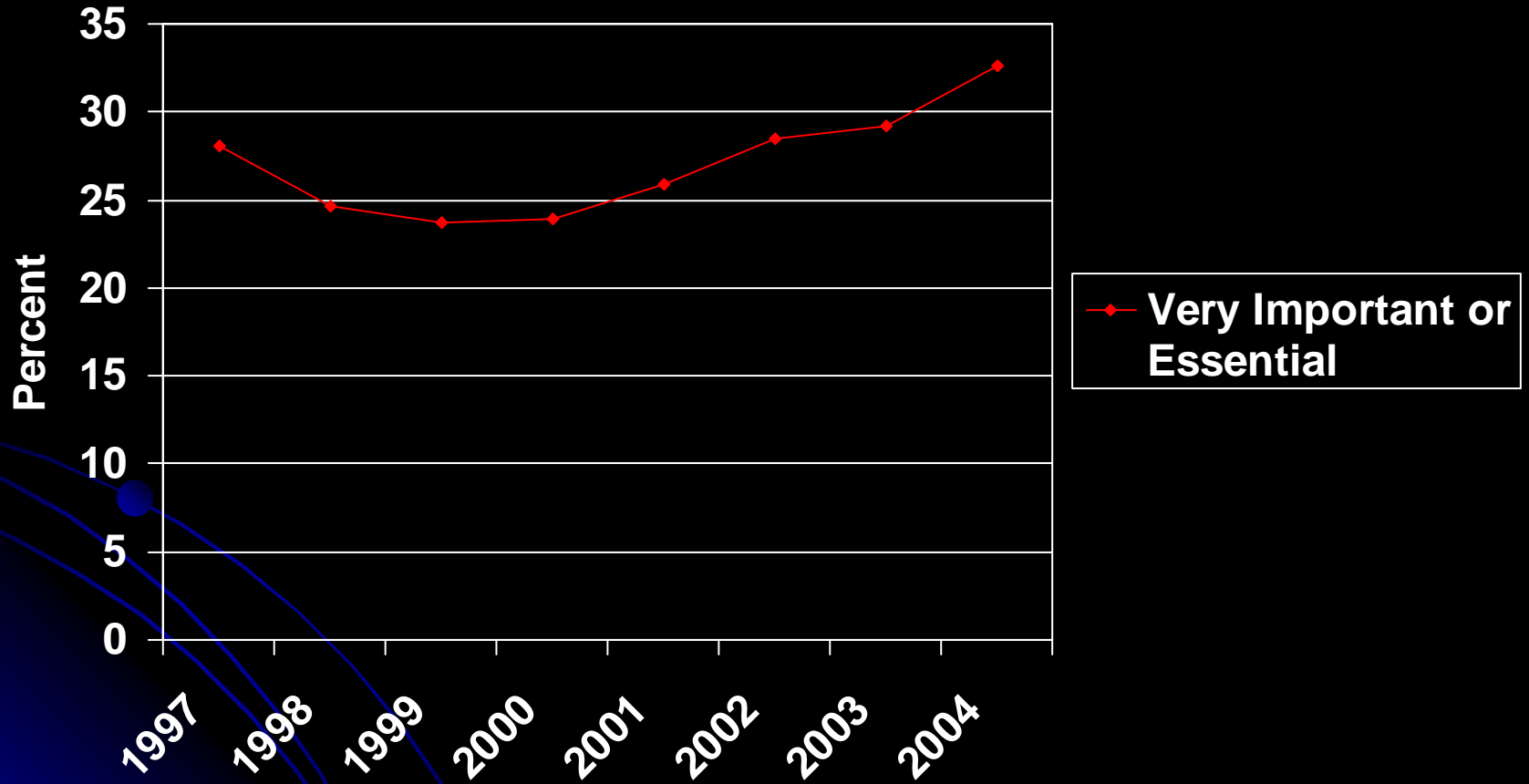
\*CSULB Freshmen 1997-2004

# Attitudes on Crime & Punishment\*



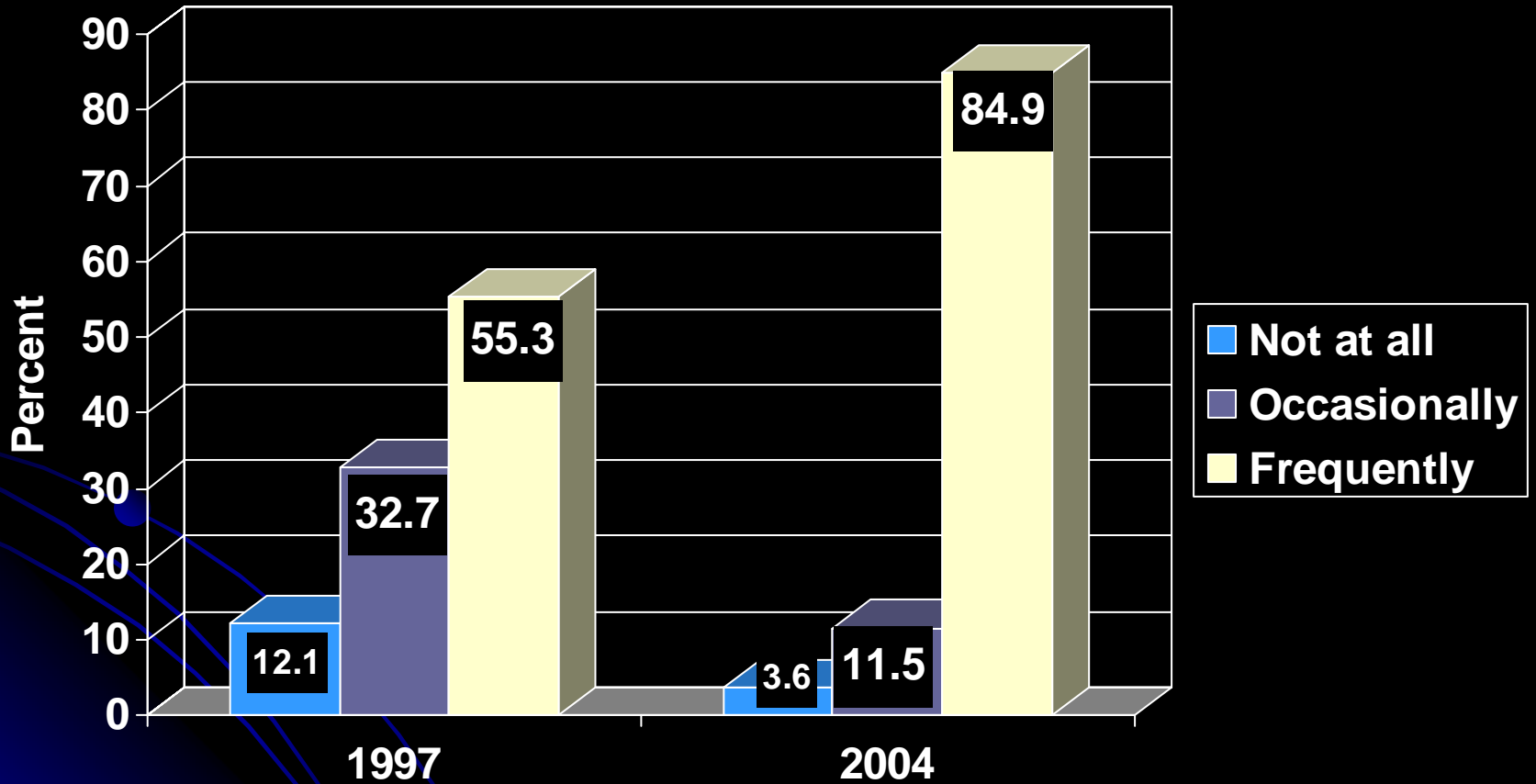
\*CSULB Freshmen 1997-2004

# Importance of Keeping Up with Politics\*



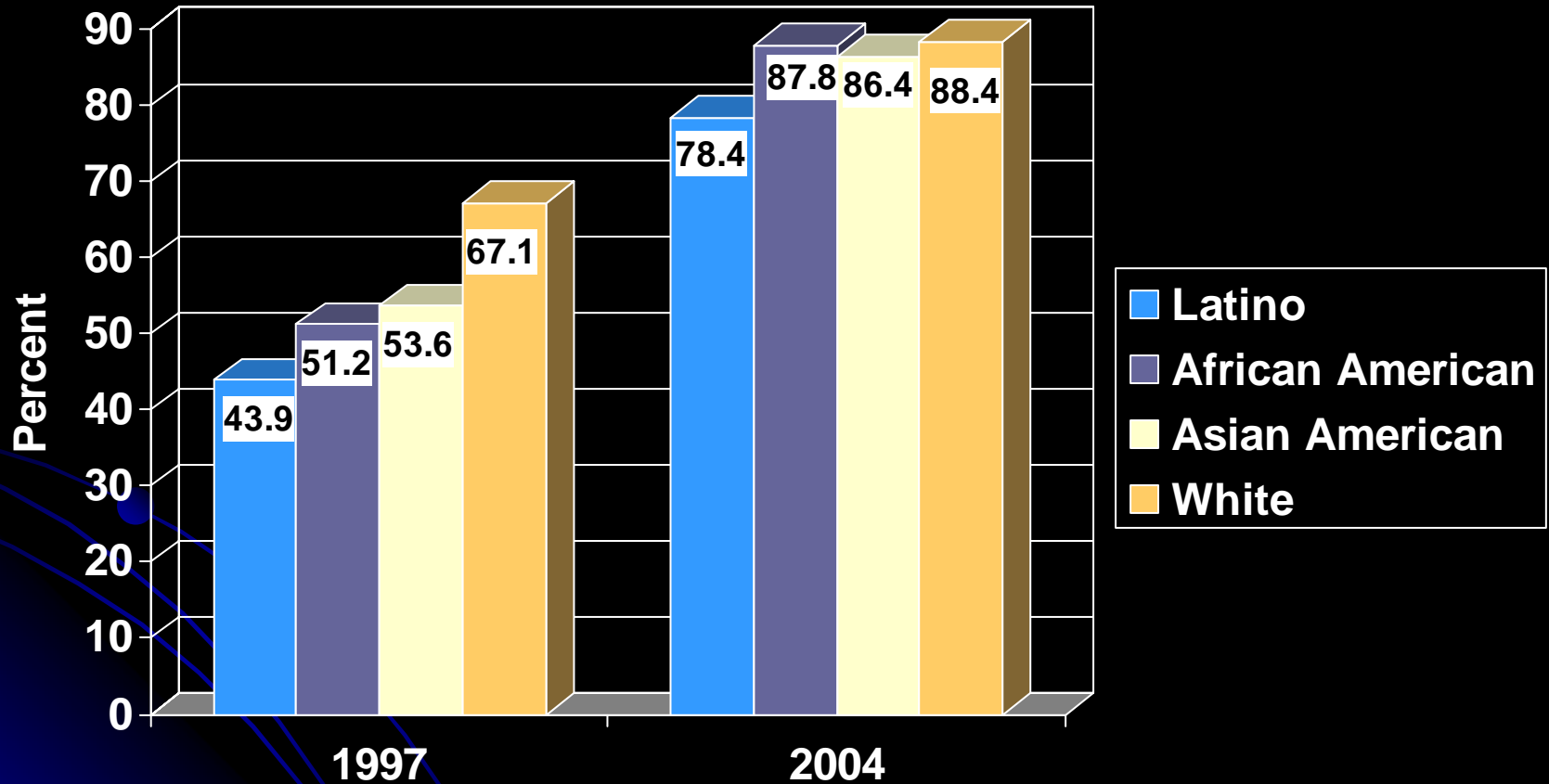
\*CSULB Freshmen 1997-2004

# Use of Personal Computer\*



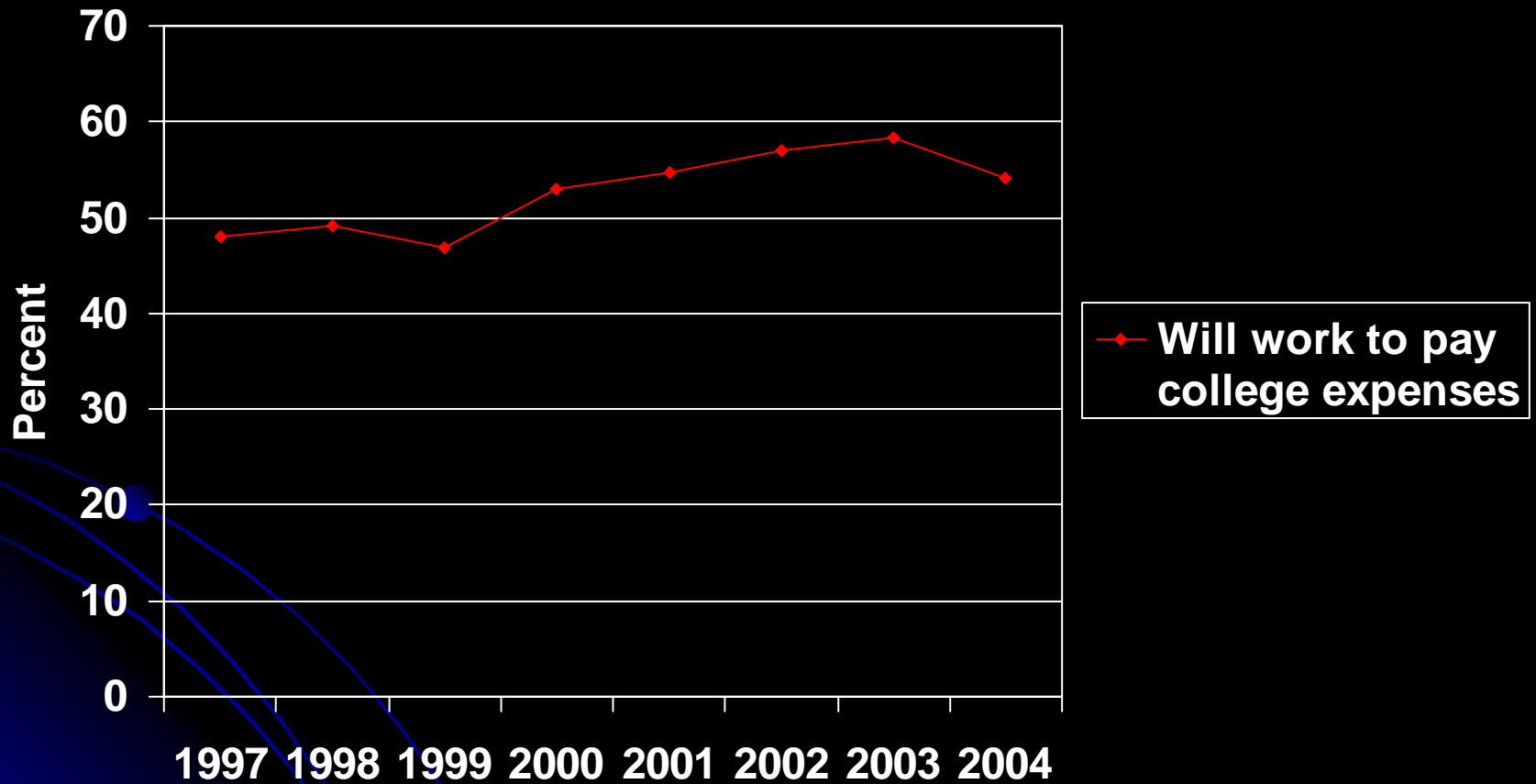
\*CSULB Freshmen 1997-2004

# Frequent Use of Personal Computer\*



\*CSULB Freshmen 1997-2004

# Work to Pay College Expenses\*



\*CSULB Freshmen 1997-2004

# % Planning to Work to Pay for College\*

Family income	Males	Females	Difference (F-M)
\$100,000 or more	33.9	49.2	+15.3
\$60,000-99,999	48.4	61.1	+12.7
\$30,000-59,999	50.3	66.2	+15.9
Less than \$30,000	54.6	56.9	+2.3

# % Engaging in Recreational Activities more than 10 Hours Per Week\*

Activity	Males	Females	Difference (F-M)
Socializing with friends	48.1	40.9	-7.2
Exercising/ sports	32.8	21.5	-11.3
Watching TV	16.9	11.1	-5.8
Partying	9.0	4.9	-4.1

# % Engaging in Non-Recreational Activities more than 10 Hours Per Week\*

Activity	Males	Females	Difference (F-M)
Working for pay	34.8	37.5	+2.7
Studying or homework	13.5	23.1	+9.6
Housework or childcare	4.2	6.2	+2.0


# Health Indicators\*

Item (% reporting)	Males	Females	Difference (F-M)
Emotional health good	53.2	44.2	-9.0
Physical health good	57.2	37.5	-19.7
Maintained healthy diet	87.8	85.2	-2.6

# Health Indicators Continued\*

Item (% reporting)	Males	Females	Difference (F-M)
Felt overwhelmed last year	17.8	33.4	+15.6
Felt depressed last year	54.7	67.1	+12.4
Plan to seek personal counseling	43.3	52.9	+9.6

# Uses of the Freshman/Transfer Student Databases

- Enrollment Management
  - Retention and graduation research
  - Program assessment & evaluation
  - Profiles of students served
  - Predictions of outcomes
  - Comparisons of cohorts
  - Accreditation
- 

# Contact Information

- For questions, comments, or requests, please E-mail Dr. Susan Platt  
([platt@csulb.edu](mailto:platt@csulb.edu))

- Visit the Student Assessment Findings website at:

[CSULB Student Assessment Findings](#)