

2004-2005 Annual Report of Grants and Contracts

Office of University Research

	Page
1. The Year in Review: 2004-2005	2
2. Historical Perspectives	8
3. Grant and Contract Activities by Organizational Unit	8
a. Academic Affairs	8
1. Division	12
2. College of the Arts	12
3. College of Education	12
4. College of Engineering	13
5. College of Health and Human Services	13
6. College of Liberal Arts	14
7. College of Natural Sciences and Mathematics	14
b. Administration and Finance	15
1. Division	15
2. CSULB Foundation	15
c. Student Services	16
4. Appendix: List of 2004-2005 Grant and Contract Awards	17

Acknowledgements: This report is dedicated to the hard-working professionals in the Office of University Research, Division of Academic Affairs: Carolyn Dersch, Kathy Smalley, Rosanna Mogi, James Till, Paulette McIntosh, Ellen Teneriello, Sam Sangalang, John Young, Frank Gutierrez, and Janice Young. Thanks are also due to our good colleagues in the CSULB Foundation, Sue DeRosa and JC Schnabl, who furnished the external grant/contract award data for 2004-2005.

1. The Year in Review: 2004-2005

Introduction: During the 2004-2005 fiscal year, 307 proposal clearances were processed, with an approximate total of \$111 M in fiscal requests. This level of proposal activity represented approximately a 5% increase from the previous year. Including both new and continuing grants and contracts, approximately \$30.5 M was awarded through more than 220 grants and contracts, according to the CSULB Foundation reports, representing approximately a 5% decrease in the dollar (\$) value of awards in comparison to 2003-2004.

The more than 300 grant and contract applications submitted to funding agencies in 2004-2005 represent the extraordinary intellect, energy, and dedication of faculty and staff principal investigators. These individuals, 145 in number for 2004-2005, are writing the proposals to pursue valuable research and creative activities, are leading programs to support student success, and are often providing much needed services to surrounding communities.

We acknowledge and celebrate the leadership in grant and contract applications of Roger Acey, Veronica Acosta-Deprez, James Archie, Mladen Barbic, Vivian Barrera, Robert Berdan, Eric Besnard, Jutta Birmele, Valerie Bordeaux, Paul Bott, Judy Brusslan, Xianhui Bu, Paul Buonora, Susan Carlile, Anastasios Chassiakos, Chi-Ah Chun, Emmitt Clark, Jeffrey Cohlberg, Charles Collins, Stafford Cox, Scott Crass, Elizabeth Deschenes, Jesse Dillon, Clorinda Donato, David Dowell, Stephanie Eatmon, Jana Echevarria, Gwen Edelstein, Alejandra Edwards, Elizabeth Eldon, Connie Evashwick, Gail Farmer, Michael Fender, Esteban Fernandez-Juricic, James Ferreira, Brian Finney, Dennis Fisher, Mohammed Forouzesh-Reza, Robert D. Francis, Robert Friis, Henry Fung, Bonnie Gasior, Deborah Gaut, Editte Gharakhanian, Claude Goldenberg, Cora Goldstein, Darin Goldstein, Catherine Goodman, Gary Greene, Gary Griswold, Karl Grote, Jiyeong Gu, Kristi Hagans-Murillo, Darwin Hall, Fumio Hamano, Hamid Rahai, Min He, Hamid Hefazi, Laura Henriques, Michael Hoffman, Jean Houck, Loucine Huckabay, Cynthia Hutten-Eagle, Kenneth James, Larry Jang, Dale Jorgenson, John Jung, Ilee Kaplan, Kevin Kelley, Bonnie Kellogg, Farideh Khoiny, KimOanh Nguyen-Lam, Laura Kingsford, James Kisiel, Chuhee Kwon, Shui-Fung Lam, Hahn Dam Le, Phi Loan M. Le, Cheryl Lee, Christopher Lee, Kay Lee-Fruman, Barbara LeMaster, Peter Lesnik, Alfred Leung, Lijuan Li, Carl Lipo, Ping Liu, Carol Lord, Chris Lowe, Joseph Maggadino, Kevin Malotte, Tulin Mangir, Beth Manke, Ingrid Martin, Andrew Z. Mason, Hiromi Masunaga, Douglas McAbee, Maureen McMahon, Stephen Mezyk, Sam Min, Hassan Mohamed-Nour, Kristen Monaco, Karen Nakai, Hector Neff, Thang Nguyen, Julie O'Donnell, John Oliver, Jyotsna Pattnaik, Bruno Pernet, Carrie Petrucci, Rick Pieper, Joseph Plecnik, Henry Po, Kristen Powers, Hamid Rahai, Subhash Rajpoot, Wendy Reiboldt, Raul Reis, Laura Rendon, Britt Rios-Ellis, Bryan Rourke, Patricia Rozee, Norbert Schurer, Donald Schwartz, Antonella Sciortino, Sharon Sievers, Tony Sinay, Katarzyna Slowinska, Krysztof Slowinski, Sue Stanley, Ron Strahl, Vala Stults, Linda Tiggs-Taylor, Reza Toosi, Jalal Torabzadeh, Shirley Tsai, Dessie Underwood, Martine

Van Elk, Marianne Venieris, Ron Vogel, Suzanne Wechsler, Stanley Wheatley, Antonia Wijte, Raymond Wilson, Larry Woessner, and Howard Wray.

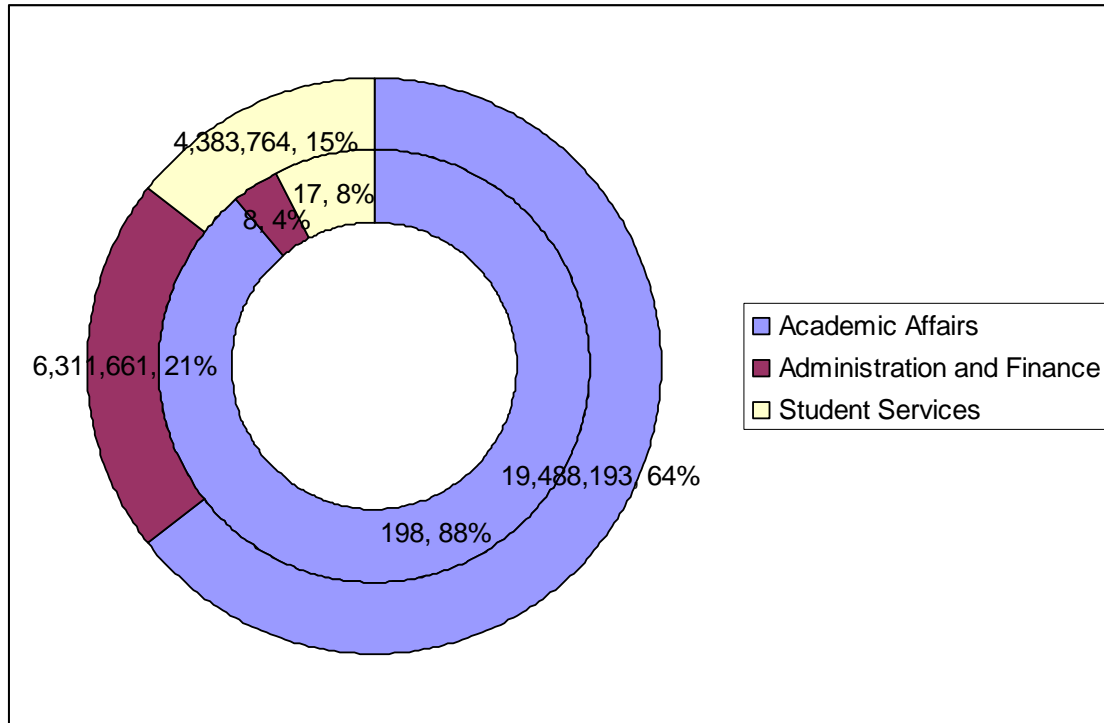
Award Data: The award data demonstrate that the Divisions of Academic Affairs, Administration and Finance/CSULB Foundation, and Student Services are all active grant/contract participants. Table 1 and Figure 1 show 2004-2005 grant and contract award totals both in terms of numbers of individual grant or contract awards, and the dollar (\$) value of these awards. Section 3 of this report includes a detailed breakdown of awards for Colleges and Departments within the Division of Academic Affairs, as well as more information concerning the grants and contracts awarded to Administration and Finance and Student Services.

Table 1: 2004-2005 Grant/Contract Totals by Division

Unit	#Awards	\$Award	%Award- #	%Award- \$
Academic Affairs ¹	198	19,488,193	89	65
Administration and Finance ²	8	6,311,661	4	21
Student Services	17	4,383,764	7	14
	223	30,183,618 ³	100	100

¹= numbers include University College and Extension Services; ² = numbers include CCDOTT (CSULB Foundation); ³ = Total reflects after award adjustments; this total thus may vary slightly from the total officially reported by CSULB Foundation in its annual report

Figure 1: 2004-2005 Grant/Contract Totals by Division



The Division of Academic Affairs represents the majority of both number of awards (198, 88%), and dollar (\$) value (\$19.5 M, 64%). The two other divisions have a higher percentage in terms of dollar (\$) value in proportion to number of awards, reflecting the fact that Academic Affairs receives a large number of relatively small grants, whereas the other two divisions manage several large grants within their portfolios.

The top twenty grants/contracts in terms of NEW award amounts are shown below in Table 2.

Principal Investigator	Unit	Award Title	Source	Award Total
Wheatley, Stan	ADMFIN	CCDoTT - Agile Port and High Speed Ship Techn	Office of Naval Research	4,580,900
Woessner, Larry	COHHS	POST Leadership Institute Training	CA Commission on POST	1,374,905
Wray, Howard	SSVCS	McNair Post-Baccalaureate	U.S. Dept. of Education	977,488
James, Kenneth	COENG	"DIMS" Distributed Inventory Management System	Office of Naval Research	831,239
Edelstein, Gwen	ADMFIN	CA SIDS Project	CA DHHS	668,000
Goodman, Catherine	COHHS	CA Labor Force Development in Geriatric Social V	Archstone Foundation	655,147
Goldenberg, Claude	COED	Task C: Oracy/Literacy Development in Spanish-S	University of Houston	629,200
Ferreira, James	COHHS	Intern Training Program Services	L.A. Co Dept of Mental Health	600,000
Edelstein, Gwen	ADMFIN	CA SIDS Project	CA DHHS	600,000
Fisher, Dennis	COLA	RESPECT Intervention for High-Risk MSM/MSM	L.A.CO DHHS - OAPP	541,720
Lopez, Marco	CONSM	Research Initiative for Scientific Enhancement	DHHS - NIH	539,766
Humphreys, Phillip	SSVCS	Upward Bound Program	U.S. Dept of Education	512,183
Goldenberg, Claude	COED	Language & Literacy Development ...	DHHS - NIH	505,812
Fisher, Dennis	COLA	Multiple Morbidity Testing Program	L.A.CO DHHS - OAPP	500,000
Malotte, Kevin	COHHS	Community Based ParticipatoryPrevention Resea	DHHS - CDC	498,242
Wray, Howard	SSVCS	Student Support Services Program	U.S. Dept of Education	485,602
Enriquez-Najera, Loretta	SSVCS	EIS/Talent Search	U.S. Dept. of Education	483,426
Wray, Howard	SSVCS	Student Support Service Program	U.S. Dept. of Education	471,459
Hovind, Tor	COTA	Compressing the Distance from Unknowing ...	DEPARTMENT OF DEFENSE	470,966
Jung, John	COLA	NIMH Career Opportunities in Research Trng	DHHS - NIH	396,785

Table 2: List of Twenty Largest Grants or Contracts Obtained During Fiscal 2004-2005

These top twenty awards comprise over 50% of the total dollar (\$) value of the 2004-2005 grant and contract award totals. A complete listing of all grant and contract awards for 2004-2005 is presented as an Appendix to this document, and also can be obtained from the CSULB Foundation (Sue DeRosa, Director, Grants and Contracts).

In terms of funding sources, the majority of funds, both in terms of numbers of awards (46%) and dollars awarded (65%) are from federal or federal flow-through sources (monies given by the federal government to state or local agencies to disburse). After federal agencies, state, local, and private entities provide the funding sources for the remainder of the grants and contracts. Figure 2 demonstrates that federal and state awards tend to be larger than local and private source awards.

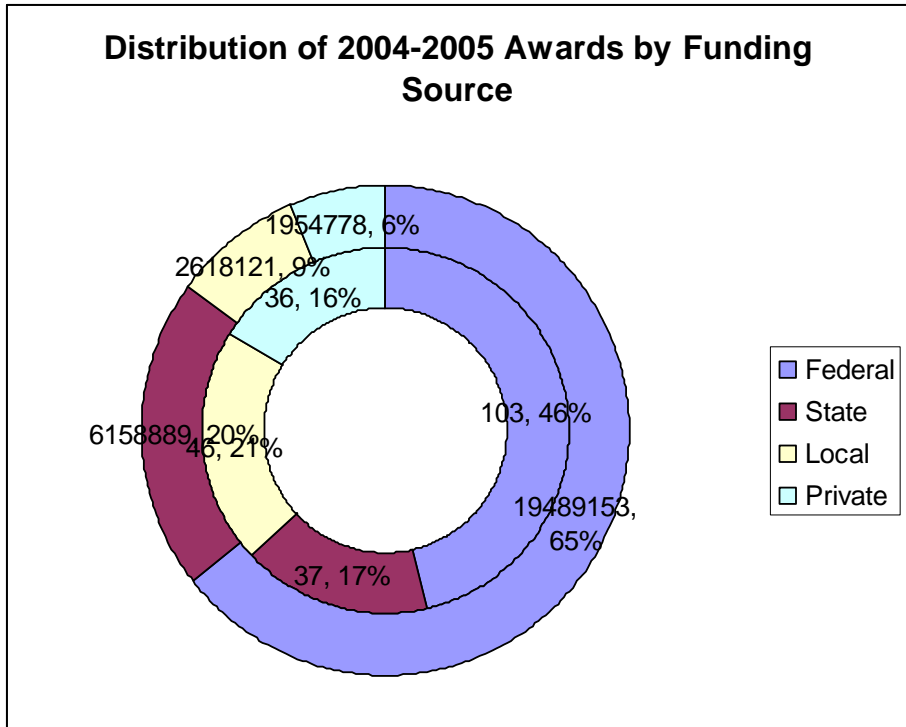


Figure 2: Chart shows the distribution of federal, state, local, and private sources for grant and contract awards for fiscal 2004-2005. The inner circle shows the number of awards, the outer circle shows the dollar (\$) value of the awards. The ratio of inner to outer circle segments demonstrates the relative sizes of the awards. Clearly, federal and state grants or contracts tend to be larger than local/private grants or contracts.

2. Historical Perspectives:

The decrease in award level noted in the previous year's report unfortunately continued this year, despite the increase in grant applications. Factors contributing to the decrease in award level may include: (1) continued tightening of federal, state, and local budgets, particularly for domestic spending, (2) increased competition for funding resources, and/or (3) patterns in faculty and staff hiring and retirements, which may have an effect on proposal success rates, and/or the types of external grant/contract applications.

The graphics shown below (Figures 3 and 4) show the last five years of proposal activity, both in terms of numbers of proposals submitted by the campus to funding agencies, and in terms of dollars requested. It is clear that the number of proposals submitted shows an upward trend, but the average dollars requested remains fairly flat (with the exception of a large jump between 2000 and 2001), at about \$100M requested per year in grant and contract support.

Figure 3: Five Year History of Grant and Contract (G + C) Applications in \$\$ Requested

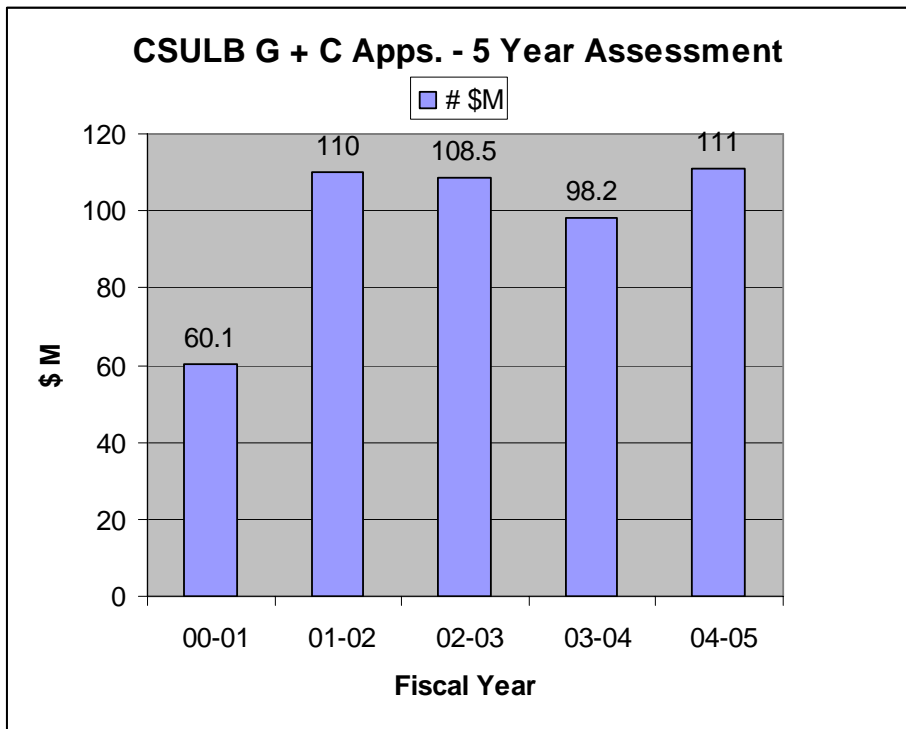
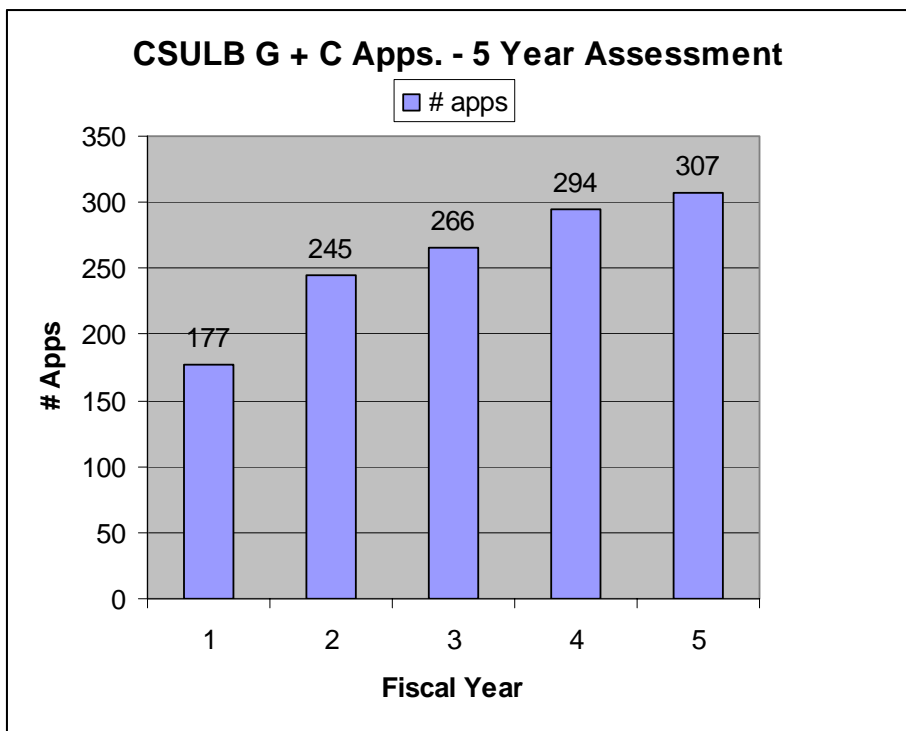


Figure 4: Five Year History of Grant and Contract (G + C) Applications in # Proposals Submitted



The following figure (Figure 5) displays the grant and contract activity for a more than twenty year period (1984-2005), dramatically showing the increase overall in grant and contract activity, the recent downturn in award dollars, and the recent upturn in numbers of grant applications.

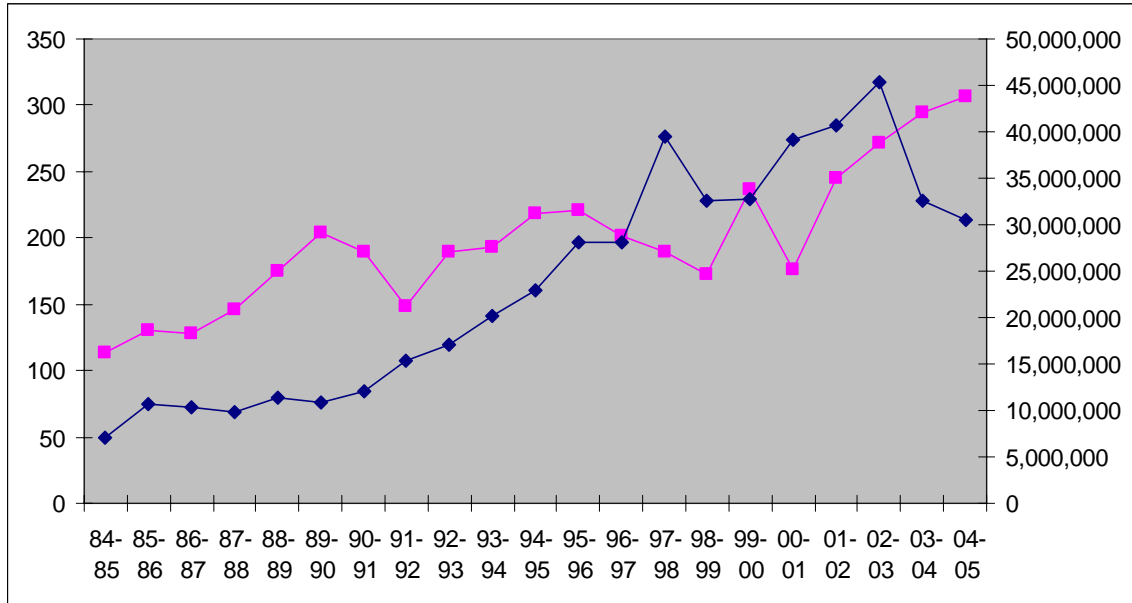


Figure 5: Twenty Year History of Grant and Contract Activity at CSULB: 1984-2005. Magenta line correlates with the left-hand y-axis annotation, and shows numbers of grant or contract applications. The dark blue line correlates with the right-hand y-axis annotation, and shows numbers of grant/contract award dollars.

Grant and Contract Activities by Organizational Unit

a. Academic Affairs - 2004-2005 Statistics:

The Division of Academic Affairs comprises eight Colleges, including College of the Arts, College of Business Administration, College of Education, College of Engineering, College of Health and Human Services, College of Liberal Arts, College of Natural Sciences and Mathematics, and University College and Extension Services. All Colleges, with the exception of Business Administration, activated grant or contract awards during 2004-2005. The greatest number (53) of individual awards were made to the College of Natural Sciences and Mathematics, and the highest \$\$ in awards were made to the College of Health and Human Services (\$5.8M). Figures 6 and 7, and Table 3 show the award \$ and number (#) of awards made to each unit within Academic Affairs.

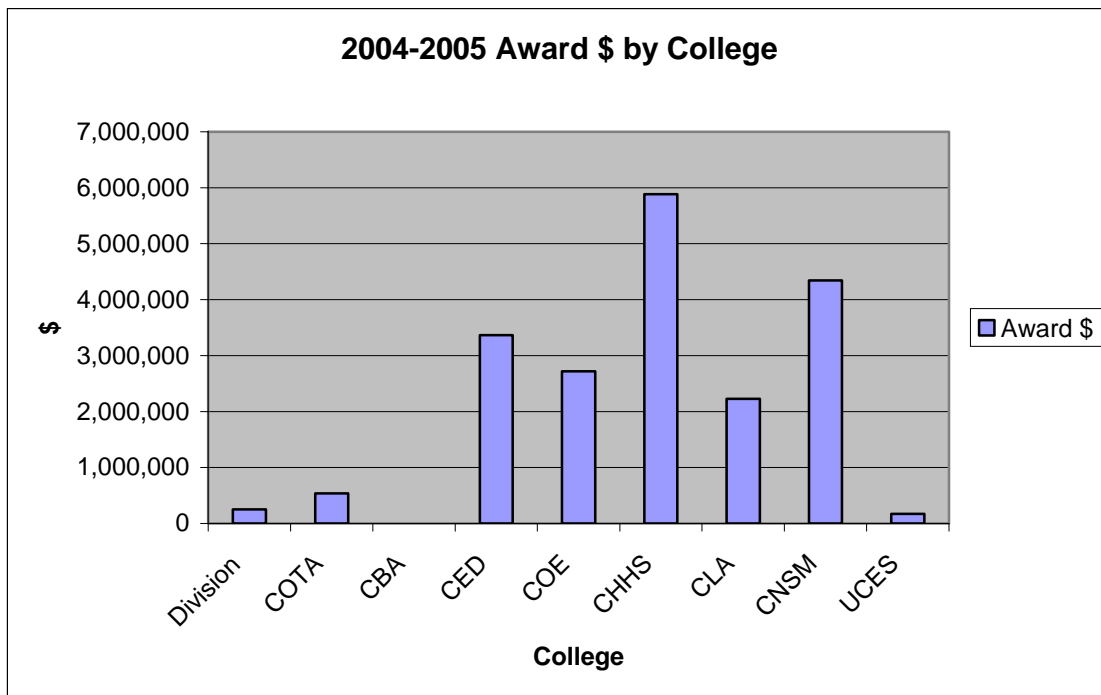


Figure 6: 2004-2005 Grant and Contract award totals in dollars (\$) by College within the Division of Academic Affairs.

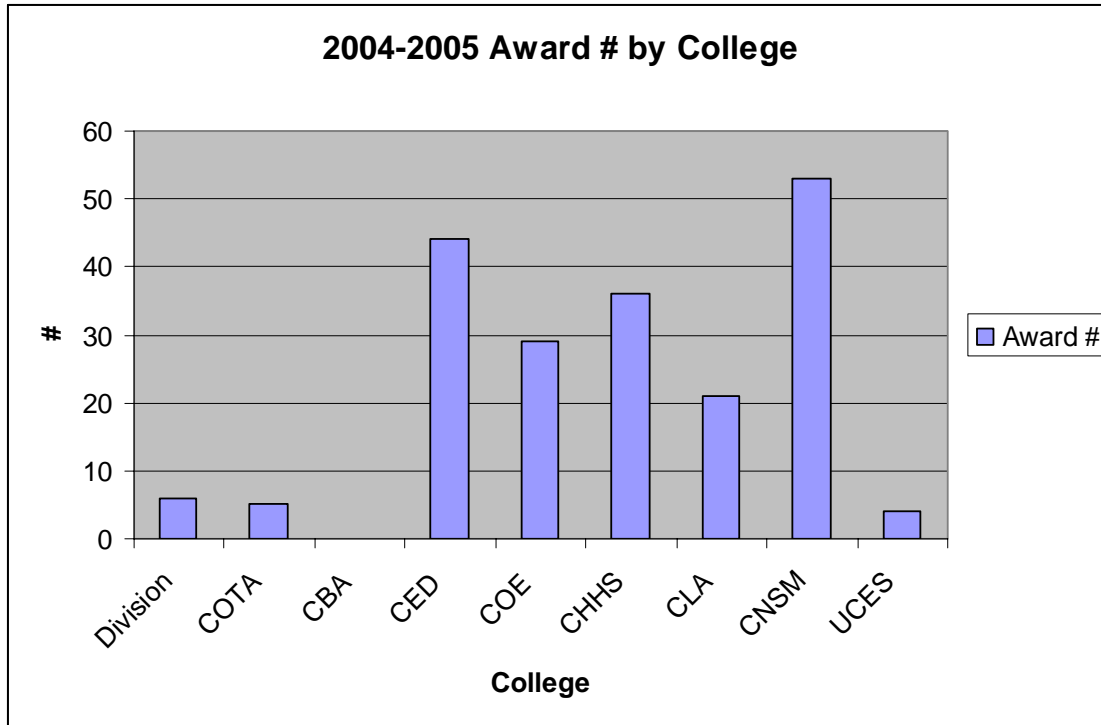


Figure 7: 2004-2005 grant and contract award totals in terms of number (#) of awards by College within the Division of Academic Affairs.

Table 3: 2004-2005 listing of award dollars (\$), number of awards (#), proposal dollars (\$), and numbers of proposal (#) by College within the Division of Academic Affairs. Note that the numbers of awards and proposals in any given fiscal year may not be related, as some awards are continuations from previous fiscal years.

AA-unit	Award \$	Award #	Prop \$	Prop #
Division-wide	250,534	6	7,466,923	8
College of the Arts	539,466	5	426,634	11
College of Business Administration	0	0	821,760	4
College of Education	3,364,892	44	10,995,321	35
College of Engineering	2,719,893	29	6,803,144	55
College of Health and Human Services	5,881,780	36	19,980,961	45
College of Liberal Arts	2,223,876	21	13,766,636	49
College of Natural Sciences and Mathematics	4,346,753	53	37,777,429	82
University College and Extension Services	170,999	4	273,259	7

Academic Affairs-Historical Perspective on Faculty Scholarly Research and Creative Activity:

One of the most interesting aspects of the patterns of external grant and contract activity is to look at the numbers of proposals submitted from each of the seven

academic colleges (Arts, Business, Education, Engineering, Health and Human Services, Liberal Arts, and Natural Sciences and Mathematics) for which proposal activity is most likely correlated with faculty research and creative activity. In other words, we can look at the patterns of grant and contract submittals over time, and assess whether the numbers of submittals are rising, falling, or static through time. Figures 8, 9, and Table 4 show patterns for the seven academic colleges for the past five years.

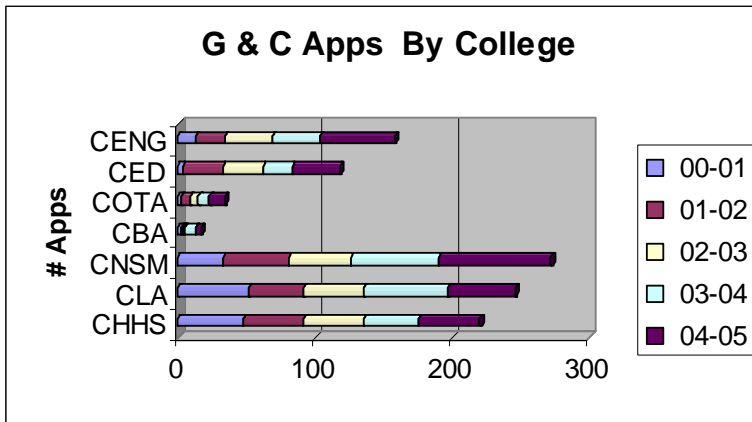


Figure 8: Numbers of external grant and contract applications for seven academic colleges from 2000-2005.

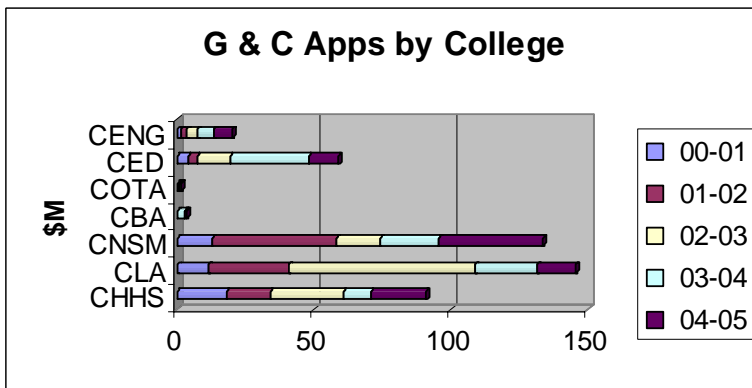


Figure 9: Dollar value (in millions of dollars) for external grant and contract applications from seven academic colleges from 2000-2005.

Table 4: Numbers of external grant and contract proposals per fiscal year for the last five years, and corresponding \$ value (in millions of dollars) of external grant and contract proposals, for the seven academic colleges

Year	CHHS	CLA	CNSM	CBA	COTA	CED	CENG
00-01	47	52	33	2	2	4	13
01-02	45	40	48	2	7	29	21
02-03	43	43	45	1	6	29	35
03-04	40	62	64	8	8	21	34
04-05	45	49	82	4	11	35	55

Year	CHHS	CLA	CNSM	CBA	COTA	CED	CENG
00-01	18.2	11.54	12.76	0.05	0.176	4.06	1.56
01-02	16.4	29.4	45.8	0.4	0.46	3.77	1.8
02-03	26.6	68.3	15.7	0.12	0.23	11.9	4.5
03-04	10	22.6	21.5	2.1	0.58	28.5	5.6
04-05	19.9	13.7	37.8	0.82	0.42	10.9	6.8

Clearly, three colleges: CNSM, CHHS, and CLA, have the largest numbers of proposals and dollars requested over the last five years. Two other colleges, CED and CENG, have demonstrated significant increases in activity over the last two to three years, both in terms of proposals submitted, and dollars requested.

The next section presents awards for the 2004-2005 fiscal year, by college or unit. Note that the numbers shown may include both new awards, and some continuation awards from previous fiscal years that have new funding cycles in the 2004-2005 fiscal year.

1. Academic Affairs-Division.

Awards by Principal Investigator:

ACADEMIC AFFAIRS	ACADEMIC AFFAIRS	TIGGS-TAYLOR, LINDA	LONG BEACH COMMUNITY COLLEGE D	115,414
	COMMUNITY SERVICE LEARNING CTR	ROZEE, PATRICIA	CSU TRUSTEES OF THE LOS ANGELES, COUNTY OF	18,385 40,000
	UNIVERSITY RESEARCH, OFFICE OF	PHILLIPS, JOY	HEALTH & HUMAN SRVCS, US DEPT	4,999

Total awards for 2004-2005: \$178,798

2. College of the Arts

Awards by Principal Investigator:

COLLEGE OF THE ARTS	CA INSTITUTE, JAZZ PRESERVATIO	O'BRIEN, ROSALINDA	ARTS, NAT'L ENDOWMENT FOR THE	20,000
	DESIGN	HOVIND, TOR	DEPARTMENT OF DEFENSE	470,966
	PERFORMING ARTS CENTER	LESNIK, PETER	ARTS, NAT'L ENDOWMENT FOR THE	30,000
	UNIVERSITY ART MUSEUM	GLENN, CONSTANCE	ARTS INTERNATIONAL	5,000
		KAPLAN, ILEE	PUB CORP ARTS	3,500

Total awards for 2004-2005: \$529,466

3. College of Education

Awards by Principal Investigator:

COLLEGE OF EDUCATION	EDUCATIONAL PSYCH & ADMIN	BERDAN, ROBERT	EDUCATION, US DEPT OF US TEACH, INC.	248,000 19,502
		GREENE, GARY	CORRECTIONS, CA DEPT OF	350,533
		LORD, CAROL	US TEACH, INC.	80,000
		NAKAI, KAREN	WASSERMAN FOUNDATION	149,145
		POWERS, KRISTIN	OREGON HEALTH & SCIENCE UNIVER	26,802
	LANGUAGE/MINORITY ED/RESEARCH	NGUYEN-LAM, KIM-OANH	EDUCATION, US DEPT OF	1,569,910
			INGLEWOOD UNIFIED SCHOOL DISTR	48,000
			L.A.COUNTY OFFICE OF EDUCATION	72,000
			MONTEBELLO UNIFIED SCHOOL DST	78,600
			PORTLAND SCHOOL DISTRICT	86,200
			SALINAS CITY ELEMENTARY SCHOOL	6,000
			SANTA ANA UNIFIED SCHOOL DIST	6,000
			STATE OF WASHINGTON	11,602
			TRACY SCHOOL DISTRICT	19,200
			TEACHER EDUCATION	ATTINASI, JOHN GOLDENBERG, CLAUDE LIU, PING
	HEALTH & HUMAN SRVCS, US DEPT LA UNIFIED SCHOOL DISTRICT	505,812 253,732		
	UNIVERSITY OF HOUSTON	1,149,200		
	EDUCATION, US DEPT OF	289,663		

Total awards for 2004-2005: \$4,984,269

4. College of Engineering
Awards by Principal Investigator:

COLLEGE OF ENGINEERING	ASSOCIATE DEAN'S OFFICE, COE	TIGGS-TAYLOR, LINDA	ABC UNIFIED SCHOOL DISTRICT	5,000
	CHEMICAL ENGINEERING	JANG, LARRY	EARTH TECH, INC.	9,500
	CIVIL ENGINEERING	PLECNIK, JOSEPH	SHEET METAL & AIR CONDITIONING	3,400
	COMPUTER ENGINEERING/SCIENCE	JAMES, KENNETH	NAVAL RESEARCH, OFC OF (ONR)	831,239
	ELECTRICAL ENGINEERING	HAMANO, FUMIO	BOEING	20,350
	ENGINEERING TECHNOLOGY	CHASSIAKOS, ANASTASSIOS	CSU LOS ANGELES	34,998
		MANGIR, TULIN	NATIONAL SCIENCE FOUNDATION	149,326
	MECHANICAL & AEROSPACE ENGINEERING	BESNARD, ERIC	GARVEY SPACECRAFT CORPORATION	30,836
		CHEN, HSIN-PIAO	ARMY, DEPARTMENT OF	134,590
		HEFAZI, HAMID	BOEING	224,498
			CYCLICS CORPORATION	32,500
	MESA CENTER		HONEYWELL	50,000
			MECHMATH LLC	29,854
			NORTHROP CORPORATION	51,043
		CLARK, EMMITT	PARSONS FDTN, THE RALPH	36,000
		TIGGS-TAYLOR, LINDA	BELLFLOWER UNIFIED SCHOOL DIST	284,143
	METRANS		LB UNIFIED SCHOOL DISTRICT	73,388
			UC, OFFICE OF PRESIDENT	200,000
		GROTE, KARL	UNIVERSITY OF SOUTHERN CA	63,662
		LAM, SHUI-FUNG	UNIVERSITY OF SOUTHERN CA	39,830
	RAHAI, H.	UNIVERSITY OF SOUTHERN CA	40,013	

Total awards for 2004-2005: \$2,344,170

5. College of Health and Human Services
Awards by Principal Investigator:

COLLEGE OF HEALTH & HUMAN SERVICES	CAREER STUDIES, CENTER FOR	BOTT, PAUL	LONG BEACH, CITY OF	326,686	
			PRISON INDUSTRY AUTHORITY	47,150	
	CRIMINAL JUSTICE, CENTER FOR	WOESSNER, LARRY	COMMISSION ON POST, CA	1,620,626	
	DEAN'S OFFICE, COHHS	VOGEL, RONALD	THE BERNARD OSHER FOUNDATION	100,000	
	ELECTRICAL ENGINEERING	COX, STAFFORD	ORANGE, COUNTY OF	287,105	
	FAMILY AND CONSUMER SCIENCES	STANLEY, M. SUE	CONFIDENCE FOUNDATION	76,400	
			S. MARK TAPER FOUNDATION	50,000	
			COMMUNITY HOSPITAL LONG BEACH	25,135	
	HEALTH CARE ADMINISTRATION	SINAY, TONY	SAINT MARY HOSP OF LONG BEACH	30,000	
	HEALTH CARE INNOV, CENTER FOR	COX, STAFFORD	HEALTH SRVCS, LA COUNTY DEPT	84,500	
	HEALTH SCIENCE	ACOSTA-DEPREZ, VERONICA	SAN BERNARDINO, COUNTY	9,400	
		FOROUZESH, MOHAMMED	ORANGE, COUNTY OF	128,000	
		LOPEZ-ZETINA, JAVIER	HEALTH & HUMAN SRVCS, US DEPT	63,000	
			UC, OFFICE OF PRESIDENT	125,000	
		MALOTTE, KEVIN	EDUCATION DEVELOPMENT CENTER I	264,999	
	METRANS	FRIIS, ROBERT	HEALTH & HUMAN SRVCS, US DEPT	498,242	
			UNIVERSITY OF SOUTHERN CA	35,000	
	NURSING	HUCKABAY, LOUCINE	FOUNDN NATL STUDNT NURSES ASS	122,151	
			LONG BEACH MEMORIAL MEDICAL CE	483,549	
			KHOINY, FARIDEH	STATE OF CA-OSHPD	68,557
			SMITH, JUDY	HEALTH SRVCS, CA DEPT OF	96,480
	OCCUPATIONAL STUDIES	RAYA, RON	EDUCATION, US DEPT OF	316,142	
	PUBLIC POLICY, CENTER FOR	SAINT-GERMAIN, MICHELLE	CALIFORNIA INTEGRATED WASTE	80,000	
	SOCIAL WORK	FERREIRA, JAMES	MENTAL HEALTH, LA COUNTY DEPT	293,500	
			LAM, BRIAN	WILLIAM T. GRANT FOUNDATION	20,000
			LEE, CHERYL	REDONDO BEACH UNIFIED SCHOOL D	30,899
			O'DONNELL, JULIE	YMCA	125,000
			OLIVER, JOHN	CHILDREN/FAMILY SRVCS, LA CNTY	1,759,112
			PETRUCCI, CARRIE	ORANGE, COUNTY OF	82,697
GOODMAN, CATHERINE			ARCHSTONE FOUNDATION	655,147	

Total awards for 2004-2005: \$7,904,477

6. College of Liberal Arts
Awards by Principal Investigator:

COLLEGE OF LIBERAL ARTS	BEHAVIORAL RESEARCH & SERVICES	FISHER, DENNIS	HEALTH SRVCS, LA COUNTY DEPT LONG BEACH, CITY OF	395,860 204,750
	ENGLISH	STRAHL, RON	UC BERKELEY	43,000
	HISTORY	KELLEHER, MARIE	PROG FOR CULTURAL COOP/SPAIN M	3,640
		SCHWARTZ, DONALD	COMPTON UNIFIED SCHOOL DISTRICT EDUCATION, LA COUNTY OFFICE	137,340 170,150
			UC LOS ANGELES UC, OFFICE OF PRESIDENT	50,000 35,807
		SIEVERS, SHARON	UC, OFFICE OF PRESIDENT	14,175
	LINGUISTICS DEPARTMENT	LEMASTER, BARBARA	NATIONAL SCIENCE FOUNDATION	9,999
	METRANS	LEE, CHRISTOPHER	UNIVERSITY OF SOUTHERN CA	39,996
		MONACO, KRISTEN	UNIVERSITY OF SOUTHERN CA	68,414
		WECHSLER, SUZANNE	UNIVERSITY OF SOUTHERN CA	40,000
	PSYCHOLOGY	JUNG, JOHN	HEALTH & HUMAN SRVCS, US DEPT	231,942
		KELEMEN, WILLIAM	HEALTH & HUMAN SRVCS, US DEPT	71,250

Total awards for 2004-2005: \$1,516,323

7. College of Natural Sciences and Mathematics
Awards by Principal Investigator:

COLLEGE OF NATURAL SCIENCES	BIOLOGICAL SCIENCES	BANUETT, FLORA	HEALTH & HUMAN SRVCS, US DEPT	179,920	
		BRUSSLAN, JUDITH	AGRICULTURE, US DEPT OF NATIONAL SCIENCE FOUNDATION	7,350 297,119	
			COLLINS, CHARLES	CSU SACRAMENTO FOUNDATION NAVY, DEPT OF THE	32,323 100,589
		FRANKLUND, CLIFTON	HEALTH & HUMAN SRVCS, US DEPT	156,777	
		GHARAKHANIAN, EDITTE	HEALTH & HUMAN SRVCS, US DEPT	137,017	
		KINGSFORD, LAURA	HEALTH & HUMAN SRVCS, US DEPT	101,221	
		LEE-FRUMAN, KAY	HEALTH & HUMAN SRVCS, US DEPT	129,863	
		LOWE, CHRISTOPHER	UNIVERSITY OF SOUTHERN CA	110,661	
		MARYKWAS, DONNA	HEALTH & HUMAN SRVCS, US DEPT	144,416	
		MASON, ANDREW	SAN JOSE STATE UNIV FDTN SO CAL COASTAL WATER RSCH PROJ	266,515 151,730	
			PONDELLA, DANIEL	FISH & GAME, CA DEPT OF	89,611
		UNDERWOOD, DESSIE	NATIONAL SCIENCE FOUNDATION	205,587	
		WILSON, RAYMOND	HEALTH & HUMAN SRVCS, US DEPT US ARMY CORPS OF ENGINEERS	136,299 2,400	
			ZHANG, MASON	HEALTH & HUMAN SRVCS, US DEPT	168,385
		FERNANDEZ-JURICIC, ESTEBA	BP FOUNDATION	13,493	
		YOUNG, KELLY	FISH & GAME, CA DEPT OF	9,982	
		CHEMISTRY & BIOCHEMISTRY	BRAZIER, CHRISTOPHER	RESEARCH CORPORATION	15,140
	BU, XIANHUI		AMERICAN CHEMICAL SOCIETY	35,000	
	BUONORA, PAUL		PFIZER PHARMACEUTICALS	5,000	
	LI, LIJUAN		HEALTH & HUMAN SRVCS, US DEPT	139,070	
	LOPEZ, MARCO		HEALTH & HUMAN SRVCS, US DEPT	539,766	
	MARINEZ, ERIC		DREYFUS FOUNDATION	10,000	
	MEZYK, STEPHEN		RESEARCH CORPORATION	19,422	
	MYERS, MICHAEL		RESEARCH CORPORATION	19,495	
	SLOWINSKA, KASHA		RESEARCH CORPORATION	28,268	
	SLOWINSKI, KRZYSZTO		HEALTH & HUMAN SRVCS, US DEPT	155,206	
	WEERS, PAUL		HEALTH & HUMAN SRVCS, US DEPT	213,750	
	GEOLOGICAL SCIENCES		FINNEY, STANLEY	NATIONAL SCIENCE FOUNDATION	29,264
			FRANCIS, ROBERT	THE METROPOLITAN WATER DISTRICT	28,249
	MATHEMATICS	EBNESHARASHOOB, MORTEZA	CSU SACRAMENTO FOUNDATION	66,250	
		KIM, EUN HEUI	ENERGY, US DEPT OF	74,220	
	PHYSICS/ASTRONOMY	BARBIC, MLADEN	NATIONAL SCIENCE FOUNDATION	89,890	
		HU, CHI-YU	NATIONAL SCIENCE FOUNDATION	40,000	
		KWON, CHUHEE	AIR FORCE, DEPT OF THE	99,998	
		PAPP, ZOLTAN	RESEARCH CORPORATION	17,841	
		RAJPOOT, SUBHASH	NATIONAL SCIENCE FOUNDATION	50,000	
		SCIENCE EDUCATION	HENRIQUES, LAURA	LB UNIFIED SCHOOL DISTRICT THE METROPOLITAN WATER DISTRICT	40,000 4,500
	MCMAHON, MAUREEN			POSTSECONDARY ED COMMISSION, CA	99,994
	STUDENT ACCESS TO SCIENCE/MATH		BAUER, ROGER	HEALTH & HUMAN SRVCS, US DEPT	195,260

Total awards for 2004-2005: \$4,456,841.

b. Administration and Finance

1. Division

Awards by Applicant:

ADMINISTRATION AND FINANCE	ADMINISTRATION & FINANCE	MACIAS, ELENA	CALIF WELLNESS FDTN, THE	5,000
	FOUNDATION	EDELSTEIN, GWEN	HEALTH SRVCS, CA DEPT OF	968,000
		THICKSTEN, EDWARD	LONG BEACH, CITY OF	96,428
		VENIERIS, MARIANNE	UNIVERSITY OF SOUTHERN CA	49,273
	METRANS	CHASSIAKOS, ANASTASSIOS	UNIVERSITY OF SOUTHERN CA	74,982
		VENIERIS, MARIANNE	UNIVERSITY OF SOUTHERN CA	20,000

Total awards for 2004-2005: \$1,213,683

2. CSULB Foundation

Awards by Applicant:

FOUNDATION	CCDOTT	WHEATLEY, STAN	NAVAL RESEARCH, OFC OF (ONR)	4,580,900
	METRANS	VENIERIS, MARIANNE	UNIVERSITY OF SOUTHERN CA	163,059

Total awards for 2004-2005: \$4,743,959

Note that awards to principal investigator Venieris are also credited to UCES.

c. Student Services
 1. Division

Awards by Applicant: 2004-2005

STUDENT SERVICES	COLLEG ASSIST MIGRINT PGM	BARRERA, VIVIAN	L.A.COUNTY OFFICE OF EDUCATION	40,000
	COUNSELING/PSYCHOLOGICAL SRVCS	LE, PHI LOAN	NAWHO-NATL ASIAN WOMEN'S HEALT	10,000
	ED INFO SRVCS/TALENT SEARCH	ENRIQUEZ-NAJERA, LORETTA	EDUCATION, US DEPT OF	687,426
	EDUCATIONAL OPPORTUNITY PRGRM	SCOTT, MICHELE	EDUCATION, US DEPT OF	204,000
	STUDENT HEALTH CENTER	CHENG, MING-YU	CSU FRESNO FOUNDATION	11,482
	STUDENT SUPPORT SERVICES	WRAY III, HOWARD	EDUCATION, US DEPT OF	1,934,549
	UNIVERSITY OUTRCH/SCHOOL REL	BORDEAUX, VALERIE	CALIFORNIA STUDENT AID COMMISS	64,511
		MALDONADO, COLEEN	CALIFORNIA STUDENT AID COMMISS	535,489
	UPWARD BOUND PROGRAM	HUMPHREYS, PHILLIP	CITY OF LONG BEACH (WIA)	49,500
	EDUCATIONAL EQUITY SERVICES	HUMPHREYS, PHILLIP	EDUCATION, US DEPT OF	612,183
			EDUCATION, US DEPT OF	234,624

Total awards for 2004-2005: \$3,895,020

Appendix: List of 2004-2005 Grant and Contract Awards

Principal Investigator	College	Project Title	Funding Source	Award
Wheatley, Stan	ADMFIN	CCDoTT - Agile Port and High Speed Ship Techno	Office of Naval Research	4,580,900
Woessner, Larry	COHHS	POST Leadership Institute Training	CA Commission on POST	1,374,905
Wray, Howard	SSVCS	McNair Post-Baccalaureate	U.S. Dept. of Education	977,488
James, Kenneth	COENG	"DIMS" Distributed Inventory Management System	Office of Naval Research	831,239
Edelstein, Gwen	ADMFIN	CA SIDS Project	CA DHHS	668,000
Goodman, Catherine	COHHS	CA Labor Force Development in Geriatric Social W	Archstone Foundation	655,147
Goldenberg, Claude	COED	Task C: Oracy/Literacy Development in Spanish-S	University of Houston	629,200
Ferreira, James	COHHS	Intern Training Program Services	L.A. Co Dept of Mental He	600,000
Edelstein, Gwen	ADMFIN	CA SIDS Project	CA DHHS	600,000
Fisher, Dennis	COLA	RESPECT Intervention for High-Risk MSM/MSMW	L.A.CO DHHS - OAPP	541,720
Lopez, Marco	CONSM	Research Initiative for Scientific Enhancement	DHHS - NIH	539,766
Humphreys, Phillip	SSVCS	Upward Bound Program	U.S. Dept of Education	512,183
Goldenberg, Claude	COED	Language & Literacy Development ...	DHHS - NIH	505,812
Fisher, Dennis	COLA	Multiple Morbidity Testing Program	L.A.CO DHHS - OAPP	500,000
Malotte, Kevin	COHHS	Community Based ParticipatoryPrevention Resear	DHHS - CDC	498,242
Wray, Howard	SSVCS	Student Support Services Program	U.S. Dept of Education	485,602
Enriquez-Najera, Loretta	SSVCS	EIS/Talent Search	U.S. Dept. of Education	483,426
Wray, Howard	SSVCS	Student Support Service Program	U.S. Dept. of Education	471,459
Hovind, Tor	COTA	Compressing the Distance from Unknowing ...	NSA	470,966
Jung, John	COLA	NIMH Career Opportunities in Research Trng	DHHS - NIH	396,785
Goldenberg, Claude	COED	Task B: Oracy/Literacy Development in Spanish-S	University of Houston	320,000
Bott, Paul	COHHS	WIA Staffing	City of Long Beach	306,686
Maldonado, Coleen	SSVCS	Cal SOAP Program 2005-2006	CA Student Aid Commissi	300,000
Edelstein, Gwen	ADMFIN	CA SIDS Project	CA DHHS	300,000
Nguyen-Lam, KimOanh	COED	English Language Acquisition/National Developme	U.S. Dept of Education	298,654
Mangir, Tulin	COENG	An Innovative Information Assurance ...	NSF	298,653
Nguyen-Lam, KimOanh	COED	Title III Long Beach Collaboration for ELL Success	U.S. Dept of Education	292,175
Smith, Judy	COHHS	Pediatric Nurse Practitioner Mobile Health Van 200	CA DHHS	289,440
Cox, Stafford	COHHS	Tobacco-Free Communities Lead Agency	Orange County Health Car	287,105
Tiggs-Taylor, Linda	COENG	Project PREPARE - Year 6	Bellflower USD	284,143
Mason, Andrew Z.	CONSM	Environmental Assessment of Canyon Lake	SJSUF / SWRCB	266,515
Malotte, Kevin	COHHS	Effectiveness of a Video-Based Educational Interv	Edu Development Ctr	264,999
Fisher, Dennis	COLA	Multiple Morbidity - State	L.A. Co. DHHS-State	250,000
Berdan, Robert	COED	Technology Enhanced Literacy Project	U.S. Dept of Education	248,000
Woessner, Larry	COHHS	POST Supervisory Management Courses	CA Commission on POST	245,721
Maldonado, Coleen	SSVCS	Cal-SOAP Program	CA Student Aid Commissi	235,489
Humphreys, Phillip	SSVCS	Trio-Upward Bound Program	U.S. Dept of Education	234,624
Weers, Paul	CONSM	Lipid-induced Conformational Switch ...	DHHS - NIH	213,750
Underwood, Dessie	CONSM	MRI:Acquisition of a LaserScissor Workstation ...	NSF	205,587
Scott, Michele	SSVCS	Educational Opportunity Centers Program	U.S. Dept of Education	204,000
Enriquez-Najera, Loretta	SSVCS	Talent Search Program 2	U.S. Dept. of Education	204,000
Goldenberg, Claude	COED	Task A: Oracy/Literacy Development in Spanish-S	University of Houston	200,000
Bauer, Roger	CONSM	Bridges to the Future: Baccalaureate Bridge Progra	DHHS - NIH	195,260
Hefazi, Hamid	COENG	Design, Eval.,ERGO Hand Tools	Boeing	195,000
Pieper, Richard	AA	Ocean Monitoring in So. Cal ...	San Jose St University	187,150
Fisher, Dennis	COLA	Foodbank: HIV Education & Prevention	City of Long Beach	180,000
Banuet, Flora	CONSM	MBRS SCORE Prog - Subproject #1	DHHS - NIH	179,920
Tiggs-Taylor, Linda	COENG	MESA Schools Program (MSP)	UCOP - MESA office	174,681
Schwartz, Donald	COLA	Subcontract: LACOE Teaching American History	LACOE	170,150
Zhang, Mason	CONSM	MBRS SCORE Prog - Subproject #5	DHHS - NIH	168,385
Franklund, Clifton	CONSM	MBRS SCORE Prog - Subproject #2	DHHS - NIH	156,777
Slowinski, Krzysztof	CONSM	MBRS SCORE Prog - Subproject #4	DHHS - NIH	155,206
Mason, Andrew Z.	CONSM	O.P.M. in a Tropic Web in Newport Bay	SCCWR	151,730
Brusslan, Judy	CONSM	RUI: The Role of the AtcDipeptidyl Aminopeptide	NSF	150,856
Nakai, Karen	COED	Urban School Leadership	Wasserman Foundation	149,145
Brusslan, Judy	CONSM	RUI: Role of AtcDipeptidyl Aminopeptidoe ...	NSF	146,263
Rava, Ronald	COHHS	Career Ladder	U.S. Dept of Education	146,022

Marykwas, Donna	CONSM	MBRS SCORE Prog - Subproject #3	DHHS - NIH	144,416
Kelemen, William	COLA	Nicotine & Expectance in Smoker's...	DHHS NIDA	142,500
Li, Lijuan	CONSM	MBRS SCORE Prog - Subproject #4	DHHS - NIH	139,070
Gharakhanian, Editte	CONSM	MBRS SCORE Prog - Subproject #1	DHHS - NIH	137,017
Wilson, Raymond	CONSM	MBRS SCORE Prog - Subproject #3	DHHS - NIH	136,299
Lee-Fruman, Kay	CONSM	MBRS SCORE Prog - Subproject #2	DHHS - NIH	129,863
Forouzesh, Mohammed	COHHS	Tobacco Use Prevention Program	Orange County Health Car	128,000
Lopez-Zetina, Javier	COHHS	Comparison of Drug Use in the ...	DHHS - NIH	126,000
Lopez-Zetina, Javier	COHHS	Comparison of Methamphetamine Users ...	UCOP / UARP	125,000
O'Donnell, Julie	COHHS	CORAL-YMCA Community Schools	YMCA of Greater Long Bea	125,000
Huckabay, Loucine	COHHS	Promise of Nursing for So. Calif. Nursing School ...	Fnd of Nat'l Student Nurse	122,151
Tiggs-Taylor, Linda	COENG	Title V Strengthening Institutions Program	LBCCD - US Dept of Ed	115,414
Schwartz, Donald	COLA	Subcontract: CHSS/Compton Teaching American	Compton USD	113,340
Humphreys, Phillip	SSVCS	Trio-Upward Bound Program	U.S. Dept of Education	100,000
Vogel, Ronald	COHHS	Osher Lifelong Learning	Bernard Osher Foundation	100,000
Kwon, Chuhee	CONSM	Variable Temp Scanning Microscope	U.S. Air Force	99,998
McMahon, Maureen	CONSM	Teaching Learning Collaborative (TLC)	CA Postsecondary Educati	99,994
Thicksten, Ed	ADMFIN	Long Beach Public Safety	City of Long Beach	96,428
Pondella, Dan	CONSM	Fish Surveys of Rocky-Reefs in the So. Calif. Bight	CA Dept of Fish & Game	89,611
Kingsford, Laura	CONSM	MBRS SCORE Program	DHHS - NIH	87,293
Cox, Stafford	COHHS	Tobacco Control & Prevention Program	L.A. County DHHS	84,500
Venieris, Marianne	ADMFIN	METRANS Administrative Budget FY05	USC / METRANS	81,839
Saint-Germain, Michelle	COHHS	Fleet Manager Training - Tire	CA Integrated Waste Mgm	80,000
Lord, Carol	COED	Synchronized Multimedia E-Book Development	USTeach	80,000
Lowe, Christopher	CONSM	The Effects of Habitat Composition ...	USC / CA Resources Ager	79,749
Stanley, Sue	COHHS	REACH Project	Confidence Foundation	76,400
Chen, Hsin-Piao	COENG	Delamination Smart Structures	U.S. Dept of Army	76,290
Jung, John	COLA	NIMH Career Opps/Research Trng H.S.	DHHS - NIH	75,600
Chassiakos, Anastasios	COENG	METRANS: Handling Empty Containers	USC / METRANS	74,982
Kim, Eun Heui	CONSM	Nonlinear Boundary Value Problems ...	U.S. Dept. of Energy	74,220
Petrucci, Carrie	COHHS	Subcontract: Evaluation of DUI Court	Orange Co. Superior Court	72,000
Clark, Emmitt	COENG	Parsons Summer Orientation Institute 05-06	Ralph M. Parsons Foundat	72,000
Nguyen-Lam, KimOanh	COED	Chaves ELD Coaching III	Montebello USD	69,000
Khoiny, Farideh	COHHS	Song-Brown Nurse Training Program	CA OSHPD	68,557
Monaco, Kristen	COLA	Ports & Hwys Infrastructure ...	USC / METRANS	68,414
Collins, Charles	CONSM	Clapper Rail - Ventura 2005/06	U.S. Navy	65,000
Bordeaux, Valerie	SSVCS	CSULB Cal SOAP Consortium	CA Student Aid Commissi	64,511
Ebneshahrashoob, Morteza	CONSM	AMP - Phase III	CSU Sacramento Foundat	63,750
Grote, Karl	COENG	Validation of Sensory Systems for Intelligent ..	USC / METRANS	63,662
Chen, Hsin-Piao	COENG	Delamination Smart Structures	U.S. Army	58,300
Oliver, John	COHHS	Inter-University Consortium-Supp.	L.A. CO. DCFA	51,321
Tiggs-Taylor, Linda	COENG	LBUSD Middle Schools MESA	Long Beach USD	50,688
Stanley, Sue	COHHS	REACH-Mark Taper Foundation	Mark Taper Foundation	50,000
Schwartz, Donald	COLA	CHSSP Mini Grant 2004-2005	UCOP	50,000
Humphreys, Phillip	SSVCS	WIA Youth Development Program	City of Long Beach	49,500
Venieris, Marianne	ADMFIN	7th Annual CITT Town Hall Meeting	USC / METRANS	49,273
Nguyen-Lam, KimOanh	COED	Morningside HS SAIT Support	Inglewood U.S.D.	48,000
Bott, Paul	COHHS	P.I.A. Cost Analysis Study	Prison Industry Authority	47,150
Slowinska, Kasha	CONSM	Diffusion of Molecular Probes ...	Research Corporation	44,609
Hefazi, Hamid	COENG	Mentor Protégé KW Microwaves/NGST	Northrup Grumman Space	43,168
Strahl, Ron	COLA	National Writing Project	UC Berkeley	43,000
Venieris, Marianne	CCDoTT	Applied Research Outreach	USC / METRANS	41,150
Rahai, Hamid	COENG	Development of an Exposure Model for Diesel Loc	USC / METRANS	40,013
Henriques, Laura	CONSM	Summer Science Camp for Middle Schools Studen	LBUSD	40,000
Hu, Chi-Yu	CONSM	RUI: Application of the Modified Faddeev Equation	NSF	40,000
Barrera, Vivian	SSVCS	LACOE Intern Program 2004-2005	LA County Office of Educa	40,000
Goldenberg, Claude	COED	Getting Results Network	LAUSD-Bertrand	40,000
Wechsler, Suzanne	COLA	Development of a LiDAR Derived DEM ...	USC / METRANS	40,000

Lee, Christopher	COLA	Feature Extraction from High Resolution Satellite Im	USC / METRANS	39,996
Lam, Shui-Fung	COENG	Monitoring of Truck Waiting & Flow Times at Everg	USC / METRANS	39,830
Hefazi, Hamid	COENG	Honeywell Internship Program	Honeywell	38,966
Nguyen-Lam, KimOanh	COED	Benson H.S. Action Plan II	Portland Public Schools	37,900
Nguyen-Lam, KimOanh	COED	Wilson H.S. Action Plan II	Portland Public Schools	37,900
Papp, Zoltan	CONSM	Integral Equation Approach to the Three-Body Cou	Research Corporation	37,682
Schwartz, Donald	COLA	Connections in World History	UCOP	35,807
Bu, Xianhui	CONSM	Synthetic, Structural & Photocatalytic ...	American Chemical Societ	35,000
Friis, Robert	COHHS	Cambodian Access to Transportation: ...	USC / METRANS	35,000
Mezyk, Stephen	CONSM	Removing Carcinogenic Nitrosamines ...	Research Corporation	35,000
Chassiakos, Anastasios	COENG	Nonlinear Modeling of Complex Structures	CSULA Univ. Auxiliary Ser	34,998
Hefazi, Hamid	COENG	Cyclic Fatigue Testing Program	Cyclics Corporation	32,500
Collins, Charles	CONSM	Prundale Freeway Monitoring	CSU Sacramento	32,323
Lowe, Christopher	CONSM	Round Stingrays - Seal Beach, CA	USC	30,912
Lee, Cheryl	COHHS	Study of RBUSD's Counseling Program	Redondo Beach USD	30,899
Besnard, Eric	COENG	Demonstrating & Analysis of RLV Operations Phas	Garvey Spacecraft Corp	30,836
Goldenberg, Claude	COED	Getting Results Network	LAUSD-Bassett	30,000
Goldenberg, Claude	COED	Getting Results Network	LAUSD-Napa	30,000
Goldenberg, Claude	COED	Sylvan Park Elem.-GRN	LAUSD	30,000
Lesnik, Peter	COTA	Seasons of Migration Cambodian Dance	Nat'l Endowment for the Ar	30,000
Sinay, Tony	COHHS	Community Needs Assessment	St. Mary Medical Center	30,000
Hefazi, Hamid	COENG	Multi-Disciplinary Computational Tools for Naval De	MECHMATH, LLC	29,854
Hefazi, Hamid	COENG	Evaluating High Temperature Polymer ..	Boeing	29,498
Goldenberg, Claude	COED	Getting Results Network-Hazeltine	Hazeltine School/LAUSD	29,370
Finney, Stanley	CONSM	Collab Resrch: Robust Estimation ...	NSF	29,264
Francis, Robert	CONSM	Seismic Detections of Hydrocarbons	Seismic Sciences, Inc.	28,249
Tiggs-Taylor, Linda	COENG	MESA School Program (MSP)	UCOP - MESA Office	25,319
White, Barbara	COHHS	Intergenerational Education Ctr on Aging	Community Hospital of Lor	25,135
Rajpoot, Subhash	CONSM	Studies in Extended Objects ..	NSF	25,000
Rajpoot, Subhash	CONSM	Studies in Extended Objects, ...	NSF	25,000
Nguyen-Lam, KimOanh	COED	LACOE Instructional Audits III	L.A. County Office of Educ	25,000
Nguyen-Lam, KimOanh	COED	LACOE Instructional Audits III	LACOE	25,000
Fisher, Dennis	COLA	City Syphilis Contract	City of Long Beach	24,750
Powers, Kristen	COED	Gender and Transition Research Project	Oregon Health & Science U	24,440
Schwartz, Donald	COLA	Compton AP World History	Compton USD	24,000
Tiggs-Taylor, Linda	COENG	MESA for High School Students	Long Beach USD	22,700
Nguyen-Lam, KimOanh	COED	Standards-Based Differentiated ELD	L.A. County Office of Educ	22,000
Hamano, Fumio	COENG	Support to Robotics System Development	Boeing	20,350
Venieris, Marianne	CCDoTT	Building Bridges 2005	USC / METRANS	20,183
Collins, Charles	CONSM	Light-footed Clapper Rail - Coronado	U.S. Dept of Navy	20,175
Venieris, Marianne	ADMFIN	I-710 ITS/Virtual Weigh Station Evaluation	USC / METRANS	20,000
O'Brien, Rosalinda	COTA	Gerald Wilson: 60 Years of West Coast Jazz	Nat'l Endowment for the Ar	20,000
Lam, Brian	COHHS	Problem Behaviors & Psychological ...	William T. Grant Foundatio	20,000
Goldenberg, Claude	COED	Getting Results Network	LAUSD-Monlux	20,000
Goldenberg, Claude	COED	Getting Results Network	LAUSD-Erwin	20,000
Bott, Paul	COHHS	WIA Staffing	City of Long Beach	20,000
Rozee, Patricia	AA	University Liaison Service Learning Grant	L.A.Co Housing Authority	20,000
Rozee, Patricia	AA	University Liaison Service Learning Grant	L.A. Co. Housing Authority	20,000

Veneris, Marianne	ADMFIN	METRANS Newsletter (3 issues)	USC / METRANS	19,887
Berdan, Robert	COED	USTeach Farsi Language - Phase II	USTeach	19,502
Nguyen-Lam, KimOanh	COED	Delta Island ELD II	Tracy USD	19,200
Goldenberg, Claude	COED	Getting Results Network	LAUSD-PAS	15,000
Goldenberg, Claude	COED	Getting Results Network	LAUSD-Columbus	14,312
Attinasi, John	COED	So. Calif Language & Academic Development	SDSU Fnd / US DOE	14,268
Rozee, Patricia	AA	Realizing the Civic Mission of Education ...	CSU Chancellor	14,185
Sievers, Sharon	COLA	CA History Social Science Project	UCOP	14,175
Kingsford, Laura	CONSM	MBRS SCORE Program	DHHS - NIH	13,928
Goldenberg, Claude	COED	Getting Results Network	LAUSD-Chandler	13,500
Fernandez-Juricic, Esteban	CONSM	Study of Black Crowned Night Herons	BP Foundation	13,493
Nguyen-Lam, KimOanh	COED	Washington State ELD	WA Dept of Ed	11,602
Cheng, Ming-Yu	SSVCS	Sober Driver Initiative	CSU Fresno Foundation	11,482
Hefazi, Hamid	COENG	Phenolic Process Development	Honeywell	11,034
Marinez, Eric	CONSM	Organic Ligands w/Structurally Defined Architecture	Dreyfus Foundation, Inc.	10,000
Le, Phi Loan	SSVCS	NAWHO Grant	NAWHO Health Partnersh	10,000
LeMaster, Barbara	COLA	Linguistics Analysis of Gendered ISL	NSF	9,999
Young, Kelly	CONSM	Breeding Assessment of CA Sheephead	CA Dept of Fish & Game	9,982
Nguyen-Lam, KimOanh	COED	Chavez Assessment Coaching III	Montebello USD	9,600
Jang, Larry	COENG	Characterization of Rheological Properties ...	Earth Tech	9,500
Acosta-Deprez, Veronica	COHHS	YACTAP	San Bernardino County	9,400
Collins, Charles	CONSM	SB CA LT 05/06	U.S. Navy	8,414
Hefazi, Hamid	COENG	Mentor Protégé KW Microwaves	Northrup Grumman	7,875
Brusslan, Judy	CONSM	Western Photosynthesis Meeting 2005	USDA/CSREES	7,350
Collins, Charles	CONSM	Salt Marsh Bird's Beak, Point Mugu	U.S. Dept of Navy	7,000
Goldenberg, Claude	COED	Getting Results Network	LAUSD-Valerio Primary Ct	6,600
Nguyen-Lam, KimOanh	COED	Cleveland HS Ed Walks	Portland Public Schools	6,400
Nguyen-Lam, KimOanh	COED	King Title III Eval - Project DREAMS	Santa Ana USD	6,000
Nguyen-Lam, KimOanh	COED	Salinas BETTER III	Salinas City Elem School D	6,000
Glenn, Constance	COTA	Mungo Thomson Exhibition	Arts International	5,000
Macias, Elena	ADMFIN	"Vida Mejor" Radio Talk Show	CA Wellness Foundation	5,000
Buonora, Paul	CONSM	2004 Pfizer AIR Minority Summer Fellows	Pfizer, Inc.	5,000
Tiggs-Taylor, Linda	COENG	MESA Tutoring for ABC USD	ABC Unified School District	5,000
Phillips, Joy	AA	OHRP Forum	DSSH/PCS/SAS/DAM	4,999
Goldenberg, Claude	COED	Saticoy-GRN	LAUSD	4,950
Rozee, Patricia	AA	Realizing the Civic Mission of Education in the CSU	CSU Chancellor	4,200
Nguyen-Lam, KimOanh	COED	Franklin H.S. Action Plan II	Portland Public Schools	4,000
Kelleher, Marie	COLA	Women and the Law in 14th Century Catalonia	Program for Cultural Coop	3,640
Kaplan, Ilee	COTA	2005 Neighborhood Project Grant	Public Corp. for the Arts	3,500
Plecnik, Joseph	COENG	Analytical Studies on Thin Gage Metals	SMACNA	3,400
Ebneshahrashoob, Morteza	CONSM	Alliance for Minority Participation-Phase III	CSU Sacramento Foundat	2,500
Henriques, Laura	CONSM	Young Scientist Camp	Metropolitan Water District	2,500
Wilson, Raymond	CONSM	USACE Technical Report Review	U.S. Dept of the Army	2,400
Powers, Kristin	COED	Gender & Transition Research Project	OHSU	2,362
Henriques, Laura	CONSM	Future Science Educators	Metropolitan Water District	2,000