

Guiding the Health Professions Student:

# 2017 Conference Presentations

---

---

## TABLE OF CONTENTS

<b>2017 CONFERENCE PROGRAM.....</b>	<b>2</b>
ALLOPATHIC MEDICINE .....	4
AUDIOLOGY AND SLP.....	22
CHIROPRACTIC MEDICINE .....	50
DENTAL MEDICINE .....	92
NURSING .....	132
OCCUPATIONAL THERAPY .....	154
OSTEOPATHIC MEDICINE.....	169
PHARMACY .....	189
PHYSICAL THERAPY .....	227
PHYSICIAN ASSISTANT .....	267
PODIATRIC MEDICINE .....	290

## About HPAO

The Health Professions Advising Office (HPAO) at California State University, Long Beach is committed to helping students develop an understanding of health professions and foster their intellectual, personal and humanistic development as they prepare for careers in health professions. In addition, the HPAO is devoted to enhancing opportunities for underrepresented, first-generation college students to become leaders in a complex healthcare system, working to increase health and wellness within their communities.

Sessions will be available for online viewing shortly after the conference.  
[csulb.edu/colleges/cnsm/sas/hpao/counselors.html](http://csulb.edu/colleges/cnsm/sas/hpao/counselors.html)



## Lunch

Boxed lunch will be available in Sunset B\*

\*If you are in **Sunset B** for session III please enjoy lunch at 12:20. Then visit the fair by 12:55pm..

\*If you are in **Summit or Sunset A** for session III please visit the fair at 12:20, then proceed to Sunset B for lunch by 12:55pm.

## Mini Fair Participants

Cal State Long Beach  
Azusa Pacific University  
Samuel Merritt University  
David Geffen School of Medicine at UCLA  
Keck Graduate Institute  
Marshall B. Ketchum University  
Palmer College of Chiropractic  
Touro University Nevada  
UC Irvine School of Medicine  
University of the Pacific  
USC Occupational Therapy  
Western University



### Sponsor Thank You:

Bags and drinks provided by

# 49er Shop

## Guiding the Health Professions Student:

A Conference for Community College Counselors

Friday, September 29, 2017



**WHITAKER HEALTH PROFESSIONS  
ADVISING OFFICE**

College of Natural Sciences and  
Mathematics

California State University,  
Long Beach

# Welcome!

We are so very glad that you have come to Long Beach for this professional development opportunity. Our hope is that you have a wonderful time, learn something new and connect with colleagues!

The objective of this conference is to provide community college counselors with information that will assist them as they provide academic and career guidance for students who plan to enter the health professions. Guest speakers representing various health professions will present the latest updates in trends, admissions, and requirements.



## Conference Agenda

- 7:30-8:10 Registration/Light Breakfast
- 8:15-8:40 Welcome Remarks (**Sunset B**)
- 8:40-9:20 Opening Keynote: Medicine
- 9:30-10:20 Breakout Session #1
- 10:30-11:20 Breakout Session #2
- 11:30-12:20 Breakout Session #3
- 12:30-1:20 Lunch (**Sunset B**)
- 12:30-1:20 Mini Fair (**Gallery**)
- 1:30-2:20 Closing Keynote: Nursing (**Sunset B**)

## Keynote Speakers

Welcome: Dr. Curtis Bennett



Curtis D. Bennett is the new dean for the College of Natural Sciences and Mathematics (CNSM). He is tasked spearheading efforts in the areas of science, technology, engineering and math at CSULB.

Medicine: Monica Perkins



What makes someone an ideal candidate for medical school admissions? This session is designed to equip college counselors with tools to guide students on various pathways to medicine.

Nursing: Carly Smyly



What makes an ideal candidate for nursing school admissions? This session is designed to equip college counselors with tools to guide students on various pathways.

### WiFi

In device WiFi settings, connect to the "beachnet-guest-access" network.

Open a browser and click on the "Self-register" link in the box on the right. This will lead you through the process.

## Breakout Sessions

### Session I: 9:30-10:20 am

Keck Graduate Institute: School of Pharmacy  
SUNSET A

USC Mrs. T.H. Chan Division of Occupational Science and Occupational Therapy  
SUNSET B

College of Dental Medicine at Western University of Health Sciences  
SUMMIT

### Session II: 10:30-11:20 am

Department of Physical Therapy at CSULB  
SUNSET A

The School of PA Studies at Marshall B. Ketchum University  
SUNSET B

Doctor of Osteopathic Medicine at Touro University Nevada  
SUMMIT

### Session III: 11:30-12:20 pm

Department of Speech-Language Pathology and Audiology at University of the Pacific  
SUNSET A

Palmer College of Chiropractic Medicine  
SUNSET B

California School of Podiatric Medicine at Samuel Merritt University  
SUMMIT



# David Geffen School of Medicine

---

# *Pathways to Medical School*

*Monica Ugwu Perkins, M.Ed.*

*Pronouns: she, her*

*Interim Director of Diversity, Inclusion, & Outreach*

*David Geffen School of Medicine at UCLA*



David Geffen  
School of Medicine

---

# Objectives

- ❖ Understand what is important to medical school admissions committees.
- ❖ Formulate a plan to help students become a successful medical school applicant.



# Resources - Advisors

- <https://aamc.org/advisors/>

**AAMC** Association of American Medical Colleges

ADVISORS ADVOCACY CALENDAR DATA FINANCIAL AID NEWS SERVICES

Choosing a Medical Career Applying to Medical School Attending Medical School Applying to Residency Training in a Residency or Fellowship

Home [Share](#) | [f](#) [t](#) [in](#) [✉](#)

## Pre-Health Advisors

*As a pre-health advisor, you have a critical role in guiding your students on their individual paths to medical school. The AAMC provides accurate, reliable resources and tools on medical school admission requirements, financial aid, the application process, and more, to support you in providing the best guidance to your students.*

[Sign in to the Advisor Information System »](#)

[Sign in to the AMCAS Letter Writer Application »](#)

[Sign in to Medical School Admission Requirements »](#)

[Pre-Med Events Calendar](#)  
[Check out our calendar »](#)

[Pre-Med Event Request Form](#)  
Request a speaker or materials from the AAMC Pre-Med team.  
[Request an Event »](#)



# Resources - Students

- <https://aamc.org/students>

The screenshot displays the AAMC website interface for students. At the top, there is a purple header with the AAMC logo and the text "Students, Applicants, and Residents". To the right, there are links for "AAMC.org", "AAMC for Students, Applicants, and Residents", a shopping cart icon, and "Sign In or Register". Below this is a blue navigation bar with links for "Advisors", "Advocacy", "Calendar", "Financial Aid", and "Services", along with a search icon. A secondary navigation bar below that contains five main categories: "Choosing a Medical Career", "Applying to Medical School", "Attending Medical School", "Training in a Residency or Fellowship", and "Medical Career Journey Map". The main content area features a large banner with a background image of a smiling medical student. The banner text reads "Navigate Your Journey from Pre-Med Through Residency" and "Let's Get Started". Below the text is a vertical timeline with four steps: "Choosing a Medical Career" (blue circle), "Applying to Medical School" (red circle), "Attending Medical School" (green circle), and "Training in a Residency or Fellowship" (orange circle). At the bottom of the banner, there are links for "AAMC Event Calendar", "Share", and "#AAMC Social Media Hub".



# Resources & Publications

- Medical School Admissions Requirements (MSAR)
  - <https://aamc.org/msar>

**AAMC** Medical School Admissions Requirements for U.S. and Canadian Medical Schools

**DOWNLOAD YOUR SUBSCRIBER BONUS:**  
Data Reports from Medical School Admissions Requirements for U.S. and Canadian Medical Schools

Update Your Premedical Coursework

**Search**  
All Schools & Programs My Favorites My Notes

Search For:  Schools  Programs  Both

School Name:

Location:

School Type:  Public  Private  Both

Primary Application:  AMCAS  TMSAS  OMSAS  Other

**Results (6)**  
Sort by... MSAR Edition: 2017

**University of California, Los Angeles David Geffen School of Medicine**  
Los Angeles, California - Public Institution

First Year Class/Total Enrollment: 175 / 611  
Tuition and Fees Resident/Non-resident: \$33,202 / \$45,447  
Primary Application: AMCAS, Latest Application Filing Date: October 17, 2016  
Additional Programs: MD/Graduate Degree, MD/PhD, Postbaccalaureate, Summer Program  
MCAT® Range, 10th-90th Percentile: 27 - 39  
GPA Range, 10th-90th Percentile: 3.33 - 3.97

**University of California, Riverside, School of Medicine**  
Riverside, California - Public Institution

First Year Class/Total Enrollment: 50 / 148  
Tuition and Fees Resident/Non-resident: \$33,796 / \$46,041  
Primary Application: AMCAS, Latest Application Filing Date: November 1, 2016  
Additional Programs: Postbaccalaureate, Summer Program  
MCAT® Range, 10th-90th Percentile: 26 - 35  
GPA Range, 10th-90th Percentile: 3.37 - 3.9

**University of California, San Diego School of Medicine**  
La Jolla, California - Public Institution

First Year Class/Total Enrollment: 125 / 515  
Tuition and Fees Resident/Non-resident: \$33,573 / \$45,818  
Primary Application: AMCAS, Latest Application Filing Date: November 1, 2016  
Additional Programs: Bacc/MD, MD/Graduate Degree, MD/PhD, Postbaccalaureate, Summer Program



---

# Core Competencies for Entering Medical Students

## Interpersonal

- ❖ Service Orientation
- ❖ Social Skills
- ❖ Cultural Competence
- ❖ Teamwork
- ❖ Oral Communication

## Intrapersonal

- ❖ Ethical Responsibility to Self and Others
- ❖ Reliability and Dependability
- ❖ Resilience and Adaptability
- ❖ Capacity for Improvement



---

# Core Competencies for Entering Medical Students

## Thinking & Reasoning

- ❖ Critical Thinking
- ❖ Quantitative Reasoning
- ❖ Scientific Inquiry
- ❖ Written Communication

## Science

- ❖ Living Systems
- ❖ Human Behavior



---

# What's Important?

- ❖ Research OR Community Service
- ❖ Motivation & Testing
- ❖ Leadership
- ❖ Academic Metrics



---

# Basis of Selection for Medical School at UCLA- Holistic Review

## ❖ Academic preparation

- ❖ Undergraduate, Postbaccalaureate, Graduate Record
- ❖ MCAT

## ❖ Development of personal attributes

- ❖ Life Experiences

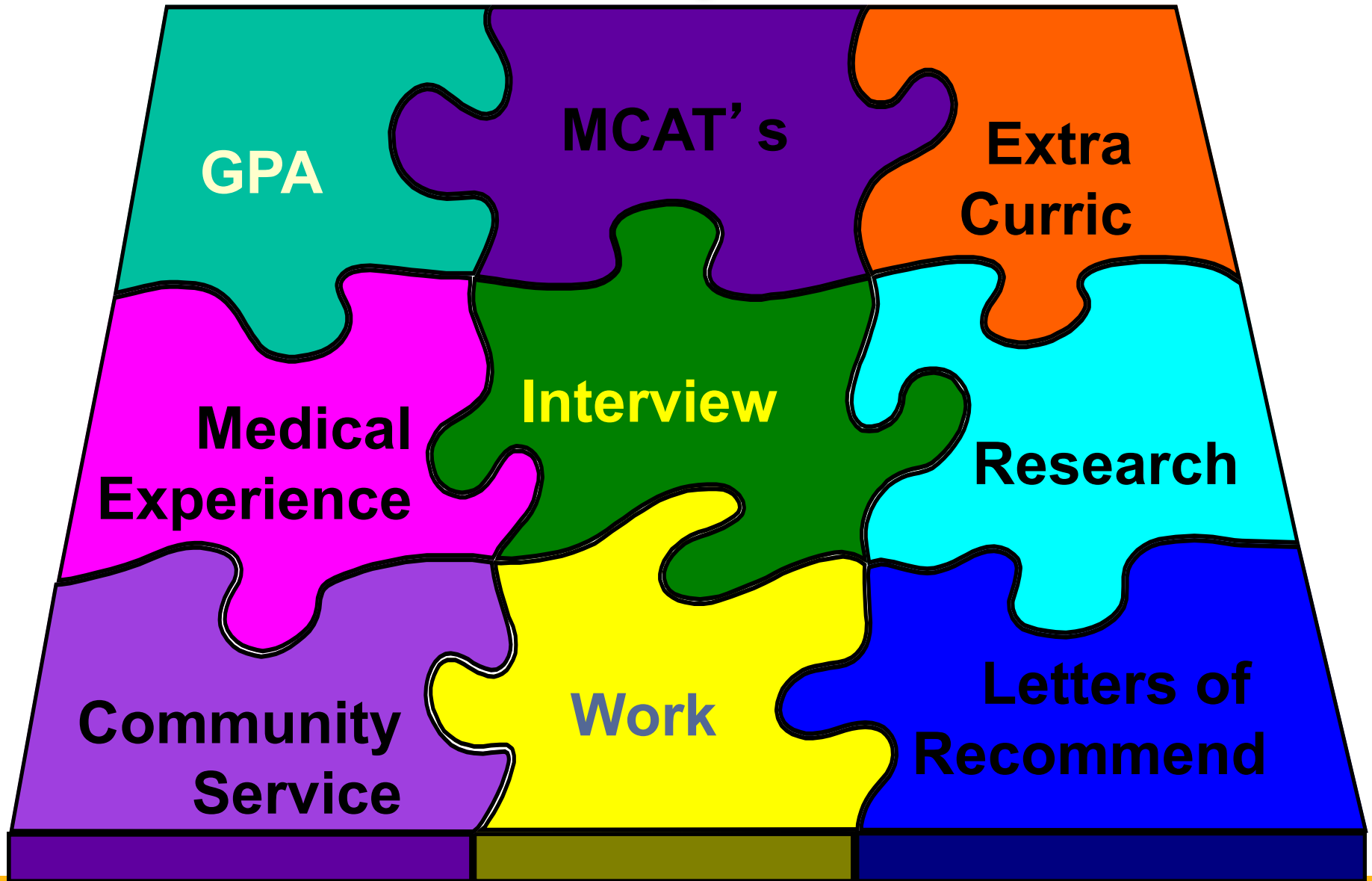
## ❖ Application process

- ❖ Secondary
- ❖ Letters of Recommendation

## ❖ Interview



# What's Important?



---

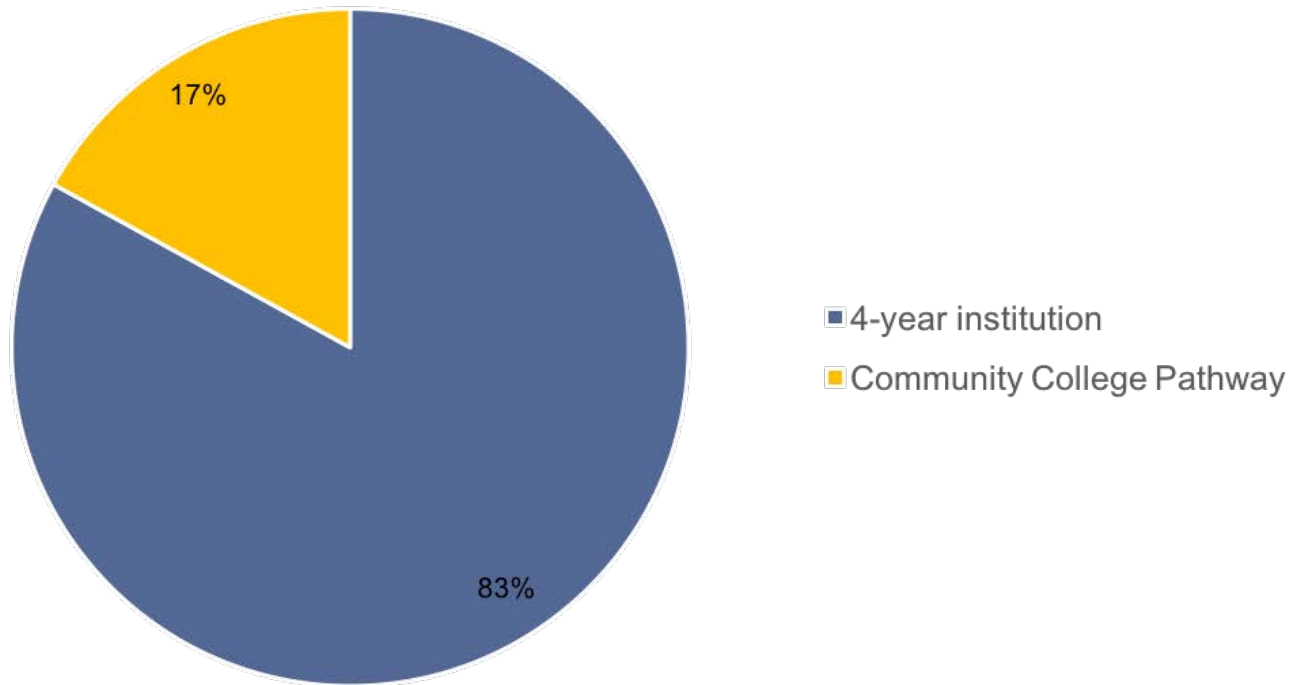
# The Ideal Medical Student



---

# Community College Pathway

DGSOM UCLA Medical School Class of 2021

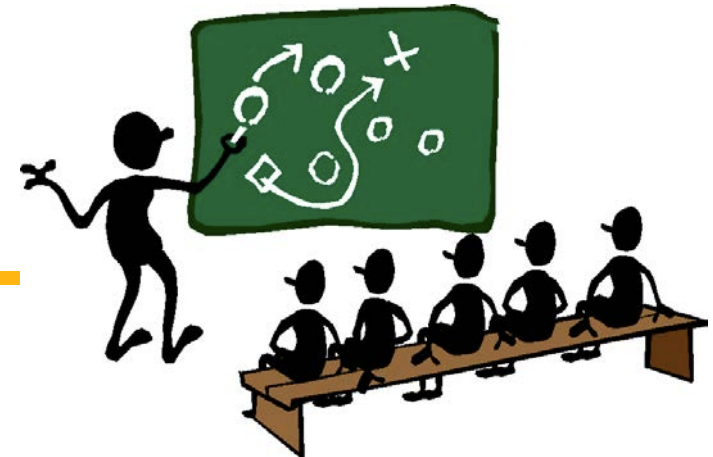




---

# Game Plan!

- ❖ Find opportunities to volunteer, shadow a physician, etc.
- ❖ Explore options for careers in medicine
- ❖ Apply to summer enrichment programs\*
- ❖ Map out coursework
- ❖ Learn about the cost & financial aid



---

# UCLA/Drew SHPEP

- ❖ National Program Office: AAMC and ADEA
- ❖ Since 2006
- ❖ Cohort: 80 students
- ❖ Six-week residential summer enrichment program.
- ❖ Targets educationally and financially disadvantaged frosh and sophomore level students at 2- and 4-year post-secondary institutions.
- ❖ Curriculum:
  - ❖ Academic enrichment, learning and communication skills
  - ❖ Clinical experience
  - ❖ Health Professions School Admissions Counseling



---

# UCLA PREP

- ❖ Since 1982
- ❖ Cohort: up to 30 students
- ❖ Six-week non-residential summer enrichment program
- ❖ Curriculum:
  - ❖ MCAT/DAT prep course
  - ❖ Academic enrichment, learning and communication skills
  - ❖ Clinical experience
  - ❖ Inquiry-based learning assignment
  - ❖ Career Guidance and Personal Development
- ❖ Longitudinal support







# David Geffen School of Medicine

A vertical orange bar on the left side of the page, serving as a logo element for the University of the Pacific.

UNIVERSITY OF THE PACIFIC

# Audiology & Speech- Language Pathology



# University of the Pacific Graduate School

Evan Blair

Assistant Director, Graduate Admission & Recruitment



# Challenge Question 1





What comes to mind when you hear the terms Audiology or Speech-Language Pathology?



## Challenge Question 2



Where do Audiologist and Speech-Language Pathologist work and what do they do?



**Who are Audiologists?**



# Audiologists

Audiology is the science of hearing, balance and related disorders. Audiologists are experts in the nonmedical diagnosis and management of disorders of the auditory and balance systems.

They frequently work with speech-language pathologists, educators, engineers, scientists and allied health professionals and technicians.



# Where Do Audiologists Work?

- Health care (73.5%)
  - Hospitals
  - Private and group practices
  - Residential health and long-term care facilities
- Education (15.6%)
  - K-12
  - Colleges and Universities
- Development learning centers/day cares and treatment centers
- Local, state, and federal government agencies



# Career Outlook

- 2016 Median pay:
  - \$75,980 per year (United States)
  - \$96,040 per year (California)
- Number of jobs, 2014:
  - 13,200 (United States)
- Job outlook, 2014-2024:
  - Projected to grow 29%
  - \*The average growth rate for all occupations is 7%
- Annual projected job openings
  - 680 (United States)
- Job security
  - Hearing loss increases as people age, so the aging population is likely to increase demand for audiologists.

\* Bureau of Labor Statistics, U.S. Department of Labor, Occupational Outlook Handbook, 2016-17 Edition, Audiologists, on the Internet at <https://www.bls.gov/ooh/healthcare/audiologists.htm> (visited September 22, 2017).



**Who Are Speech-Language Pathologists?**





# Speech-Language Pathology

Study and treatment of human communication and its disorders. Speech-Language Pathologists work with the full range of human communication to evaluate, diagnose and treat speech, language and swallowing disorders in individuals of all ages, from infants to the elderly.

Speech-Language Pathologists often work with teachers, physicians, audiologists, psychologists, social workers and rehabilitation counselors.



# Where Do Speech-Language Pathologist Work?

- Education (56%)
  - Early intervention, preschool, K-12
  - Colleges and Universities
- Health care (36%)
  - Hospitals
  - Residential health care facilities
  - Nonresidential health care facilities
  - Private practice
- Corporate Speech-Language Pathology
  - Consultant for companies and its customers
- Local, state, and federal government agencies

# Career Outlook



- 2016 Median pay:
  - \$74,680 per year (United States)
  - \$89,350 per year (California)
- Number of jobs, 2014:
  - 135,400 (United States)
  - 11,000 (California)
- Job outlook, 2014-2024:
  - Projected to grow 21% (United States)
  - Projected to grow 17% (California)
  - \*The average growth rate for all occupations is 7%
- Annual projected job openings
  - 6,310 (United States)
  - 470 (California)

\* Bureau of Labor Statistics, U.S. Department of Labor, Occupational Outlook Handbook, 2016-17 Edition, Speech-Language Pathologists, on the Internet at <https://www.bls.gov/ooh/healthcare/speech-language-pathologists.htm> (visited September 24, 2017).



**Admission**

# Audiology

- Bachelor's Degree in any discipline
  - Preferred science related field
- GPA 3.0 or above
  - 3.5 competitive
- Prerequisite “C” or better
  - Preferred “B” or better
  - Biological Sciences, Physical Sciences, Social/Behavioral Sciences, and Mathematics courses should be taken within 10 years of applying to the program.
- Personal Statement
- GRE/MCAT
  - 50<sup>th</sup> percentile
- Letter of Recommendation
- Faculty interview



# Speech-Language Pathology

- Generally, undergraduate degree can be in any discipline but is most often in CSD
- GPA 3.0 or above
  - 3.5 competitive
- Prerequisite “C” or better
  - Preferred “B” or better
- Personal Statement
- GRE/MCAT
- Letter of Recommendation
- Video recording
- Faculty interview





# Above and Beyond AuD & SLP



# Consideration for Admission

- Internships
  - AuD or SLP field
  - Summer, winter or during the school year
- Clubs
  - AuD or SLP, Communication, Student Government, etc
- Volunteer on campuses or community clinics
- Volunteer in your community



# General Knowledge

- Critical thinking, problem solving, logical reasoning skills
- Exposure to the scientific method and research experiences
- Exposure to other disciplines and professional/scientific organizations
- Opportunities for interdisciplinary and interprofessional collaborative learning
- Exposure to "evidence-informed decision making" as a lifelong learning journey
- Cultural competence
- Competencies in oral and written communication (e.g., reading, writing, listening, speaking)

\* Planning Your Education in Communication Sciences and Disorders  
<http://www.asha.org/Students/Planning-Your-Education-in-CSD/#undergraduate>





# Science Foundations

- Biology
- Human Anatomy and Physiology
- Linguistics
- Math and Statistics
- Neuroscience
- Physics and Acoustics
- Psychology and Cognitive Science
- Exposure to research contributions across fields

\* Planning Your Education in Communication Sciences and Disorders  
<http://www.asha.org/Students/Planning-Your-Education-in-CSD/#undergraduate>



# Advice for Community College Students

- Explore classes in AuD and SLP
  - University admission gives less weight to courses taken at a community college
- Visit universities with AuD or SLP Programs
- Talk to current students
- Enroll in AuD or SLP Associations
  - CA Academy of Audiology
  - American Academy of Audiology
  - American Speech-Language-Hearing Association



# Pacific Programs



# University of the Pacific

## Doctor of Audiology

- Program offered at the San Francisco campus
- Community clinics in San Francisco and Stockton
- 3 year accelerated program
- 124 units
- First AuD program in Northern California
- One of four accelerated programs in the nation
- \$914 per unit
- Average class size: 20-22 students



# University of the Pacific Speech-Language Pathology

- Program offered at the Stockton campus
- Hands-on experience at Pacific Speech, Hearing and Language Center
- Two accelerated options:
  - 15-month
    - Student with SLP Bachelor Degree
  - 24-month
    - Students with non-SLP Bachelor Degree
- Internship required for both 15 and 24 month program
- 56-88 units
- Average class size: 20-22 students



Questions?



# Contact

Evan Blair

[eblair@pacific.edu](mailto:eblair@pacific.edu)

(916) 739-7281

[go.pacific.edu/graduate](https://go.pacific.edu/graduate)

Facebook / [pacificgradadmission](https://www.facebook.com/pacificgradadmission)



A slide with a background of autumn leaves and a sun flare. The text 'UNIVERSITY OF THE PACIFIC' is centered in a dark, sans-serif font. Below it, 'Thank You!' is written in a large, white, bold, sans-serif font. A vertical orange bar is on the left side of the text.

UNIVERSITY OF THE PACIFIC

**Thank You!**



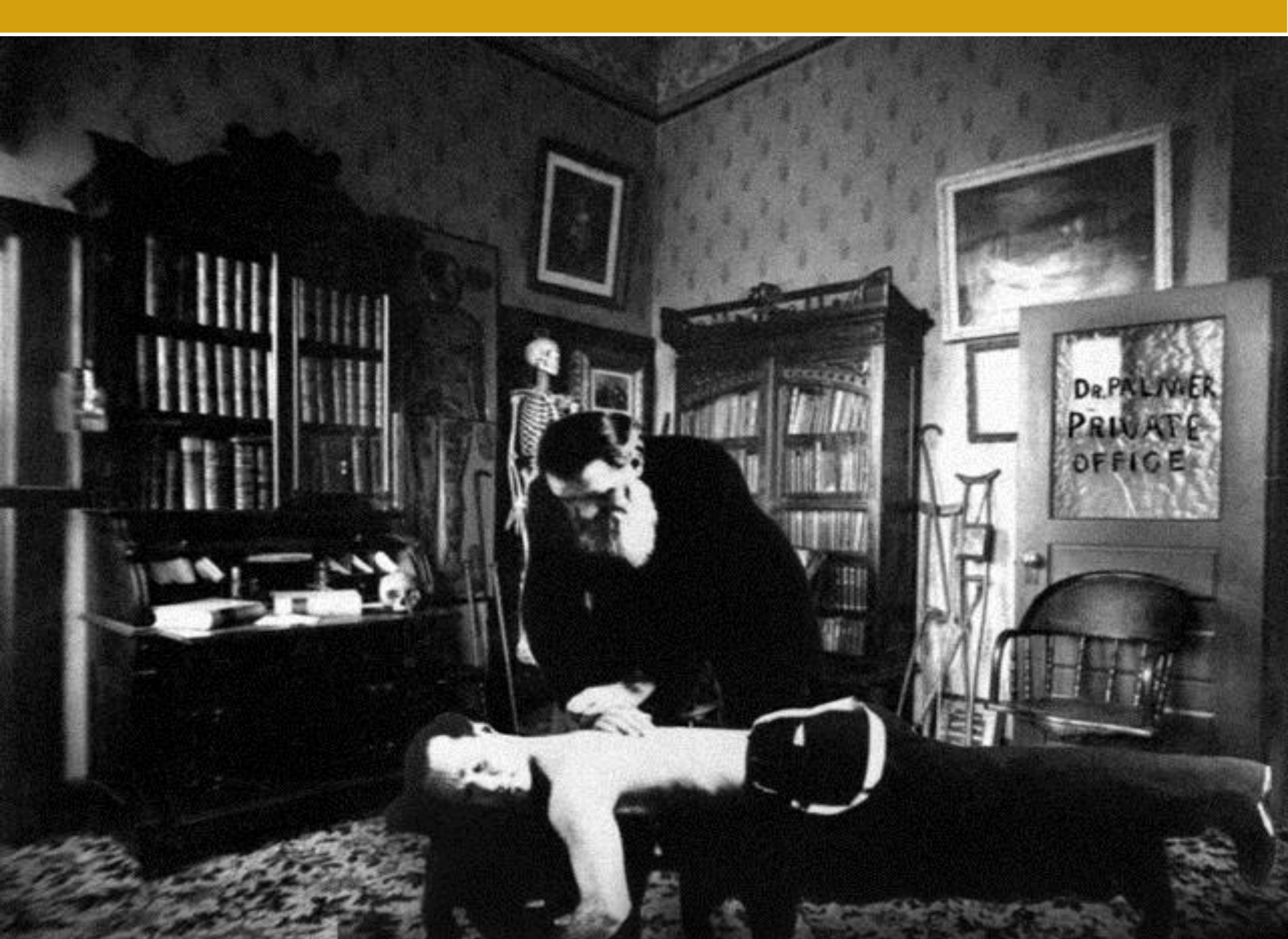
# PALMER

College of Chiropractic

*The Trusted Leader in Chiropractic Education®*

# What is Chiropractic?





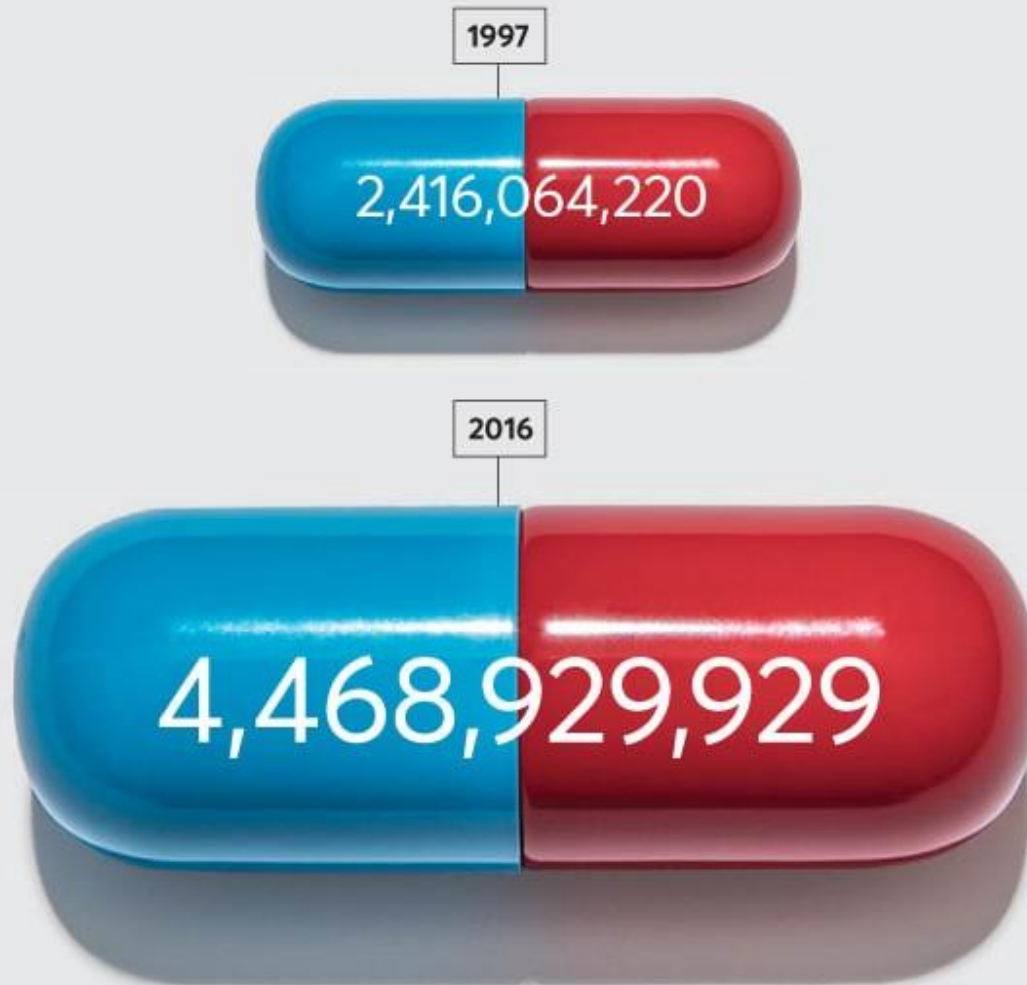
# Rx Fact

60% of Americans take at least one prescription drug, with 15% on five or more medications.

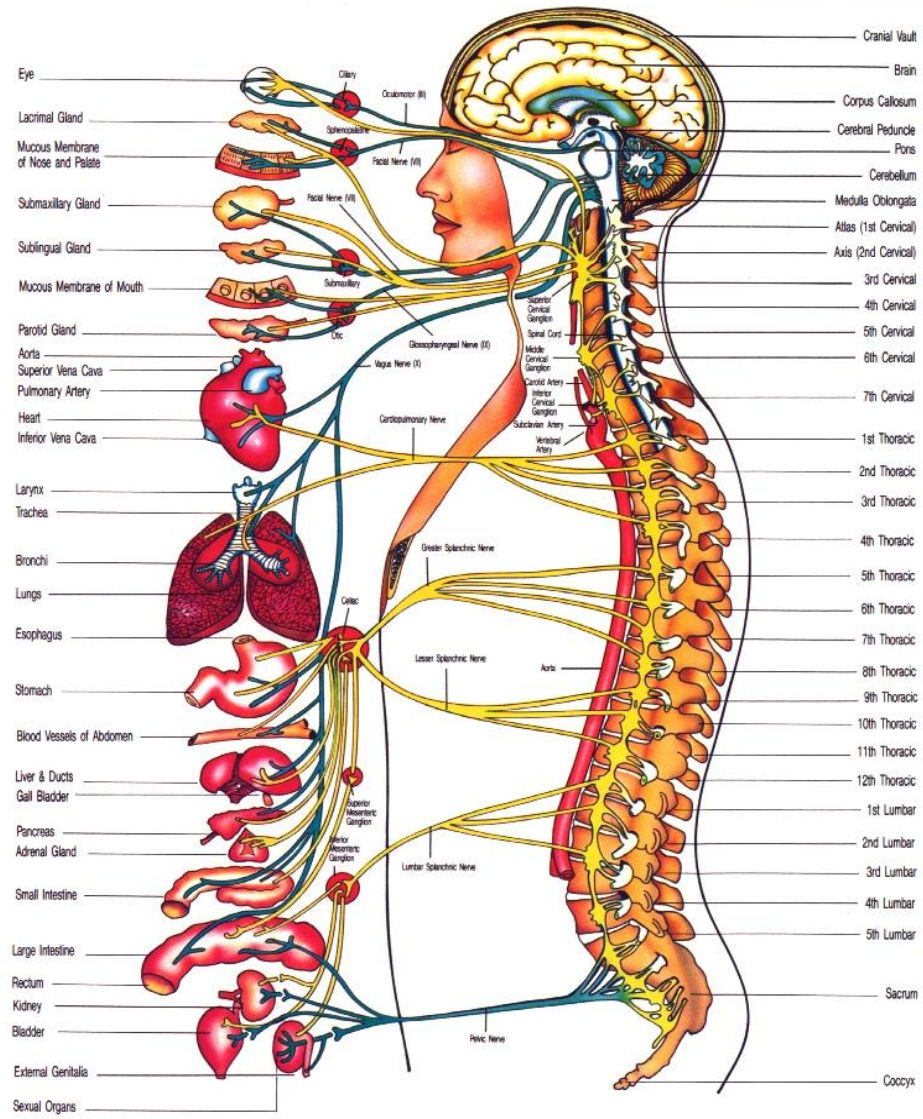
*JAMA* November 3, 2015, Vol 314, No. 17



The total number of prescriptions filled by all Americans, including adults and children, has increased by 85 percent over two decades, while the total U.S. population has increased by only 21 percent.



Source: Quintiles IMS.  
© 2017 Consumer Reports. All Rights Reserved.



**AUTONOMIC NERVOUS SYSTEM**  
 Sympathetic — Yellow Parasympathetic — Green

The Doctor of Chiropractic is:

The primary care professional for  
spinal health, and well-being.





# Primary Care Professionals for Spinal Health and Well-being

- Integrate evidence, clinical experience, and patient values and preferences,
- Deliver expert chiropractic adjustment, manipulation and other treatments,
- Embody a tradition of caring, effectiveness and patient satisfaction,
- Collaborate and coordinate care with other health professionals ,
- Enhance patient quality of life and performance,
- Promote vitality, wellness and patient empowerment,
- Enable patients to avoid unnecessary drugs and surgery,
- Offer readily accessible care.



**95%**  
of past-year  
**chiropractic**  
users say it's  
**EFFECTIVE.**



**PALMER** College of Chiropractic

*The Trusted Leader in Chiropractic Education\**

Source:

2016 Gallup-Palmer College of Chiropractic Annual Report:  
*Americans' Perceptions of Chiropractic* (10/16)



**PALMER**  
College of Chiropractic

*The Trusted Leader in Chiropractic Education®*

**89%**  
**OF PAST-YEAR**  
**chiropractic** users  
**RECOMMEND** it to  
**family** and **friends.**



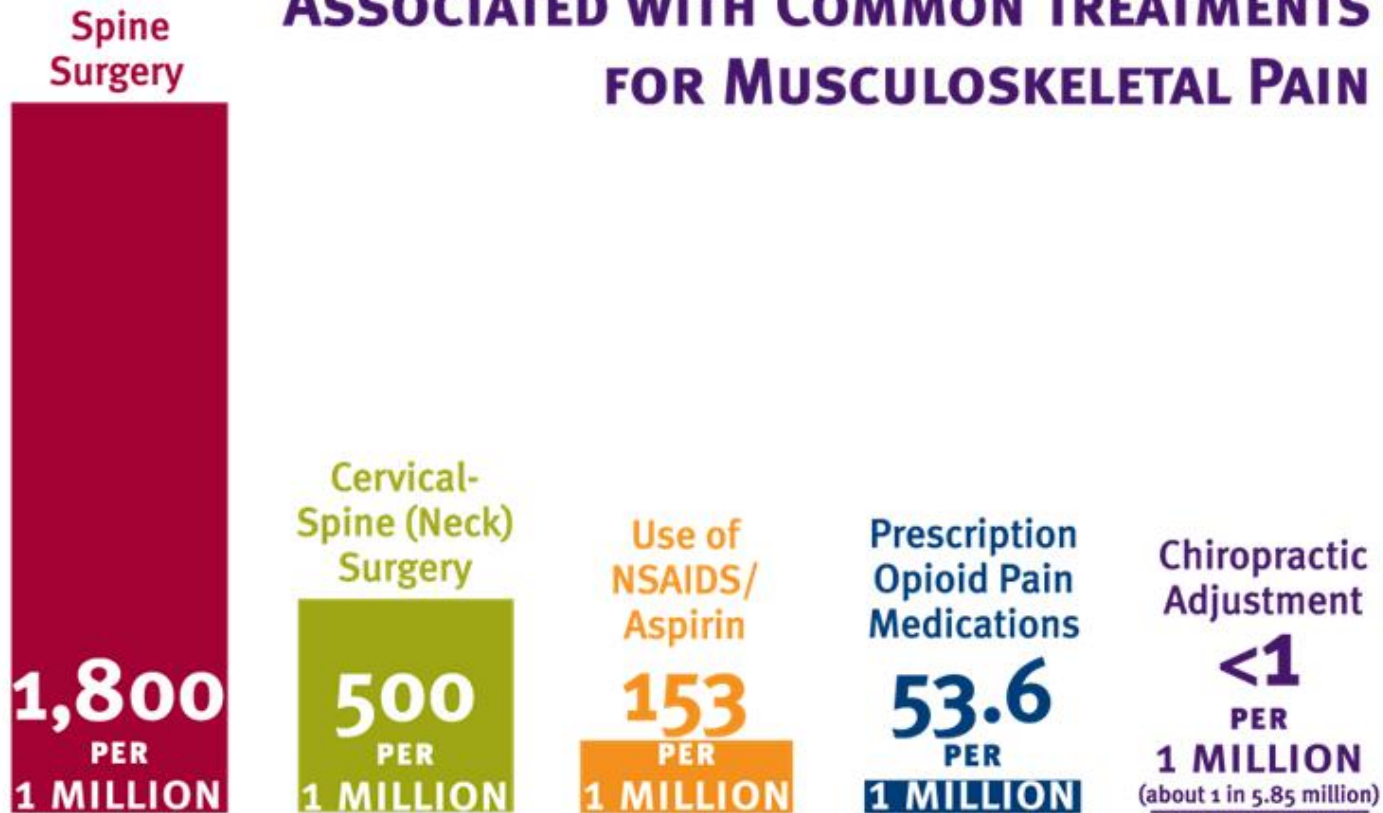
**PALMER** College of Chiropractic

*The Trusted Leader in Chiropractic Education\**

Source:

2016 Gallup-Palmer College of Chiropractic Annual Report:  
*Americans' Perceptions of Chiropractic* (08/16)

# KNOW THE RISKS OF SERIOUS SIDE EFFECTS/DEATH ASSOCIATED WITH COMMON TREATMENTS FOR MUSCULOSKELETAL PAIN



Sources:  
Available at [www.palmer.edu/gallup-report/sources](http://www.palmer.edu/gallup-report/sources) (02/16)

# Curriculum – General Sciences

- Neuroanatomy
- Spinal Anatomy
- Gross Anatomy
- Embryology
- Biochemistry
- Physiology
- Chiropractic Philosophy
- Endocrinology
- Organ Histology
- Pathology
- Immunology and Communicable Diseases
- Microbiology
- Palpation
- Physiotherapy I-Passive Care
- Physiotherapy II-Active Care

# Curriculum – Chiropractic Sciences

- Public Health
- Systems Pathology
- Digestive Physiology and Nutrition
- Physiology
- Chiropractic Philosophy
- Radiology
- Toggle Recoil Technique
- Thoraco Lumbar Technique
- Neuromusculoskeletal Diagnosis
- Toxicology
- Physiotherapy
- Cervical Technique
- Biomechanics
- Intro to Clinical Practice
- Obstetrics & Pediatrics
- Pelvic Technique
- Clinical Nutrition
- Differential Diagnosis
- Subluxation Analysis

# Curriculum – Clinical Sciences

- Chiropractic Practice Marketing
- Clinical Methods
- Emergency Procedures
- Visceral Disorders & Laboratory Interpretation
- Clinical Psychology
- Radiology
- Technique Principles & Practice
- Planning for Practice Success
- Clinic
- Extremity Adjusting
- Financial Management Strategies
- Legal Issues
- Gender-related Health
- Chiropractic Philosophy
- Practice Management Strategies
- Geriatrics
- Evidence-based Chiropractic

# Degree Requirements Comparison

D.C.  4,629

D.P.T.  3,870

M.D.  4,800

D.O.  4,665

Source: 2014 [ProHealthsys.com](http://ProHealthsys.com)



# Anatomy Hours - Comparison



# Physiology Hours - Comparison

D.C.  440

P.T.  256

M.D.  420

D.O.  450

# Orthopedic Hours - Comparison

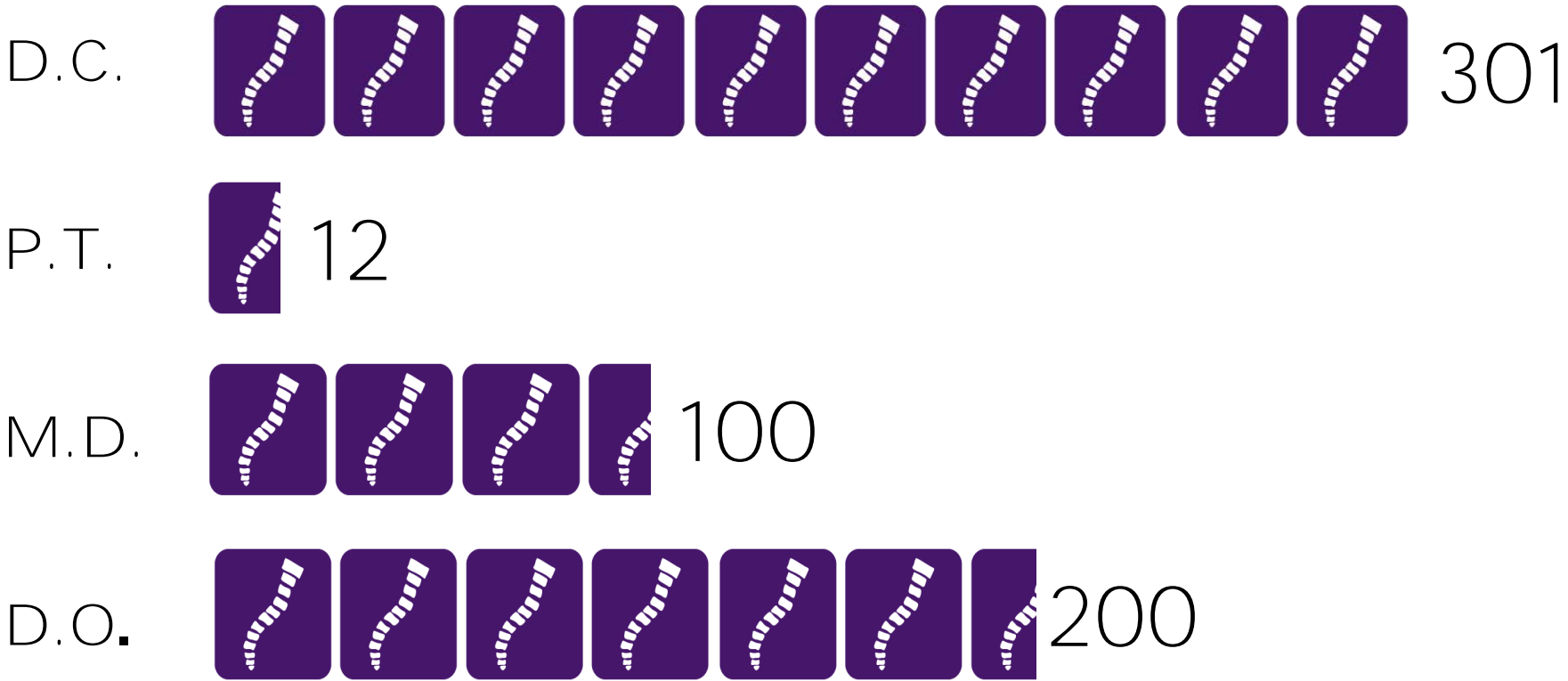
D.C.  594

P.T.  218

M.D.  45

D.O.  270

# Diagnostic Imaging (Radiology) Hours - Comparison



# Chiropractic Job Outlook

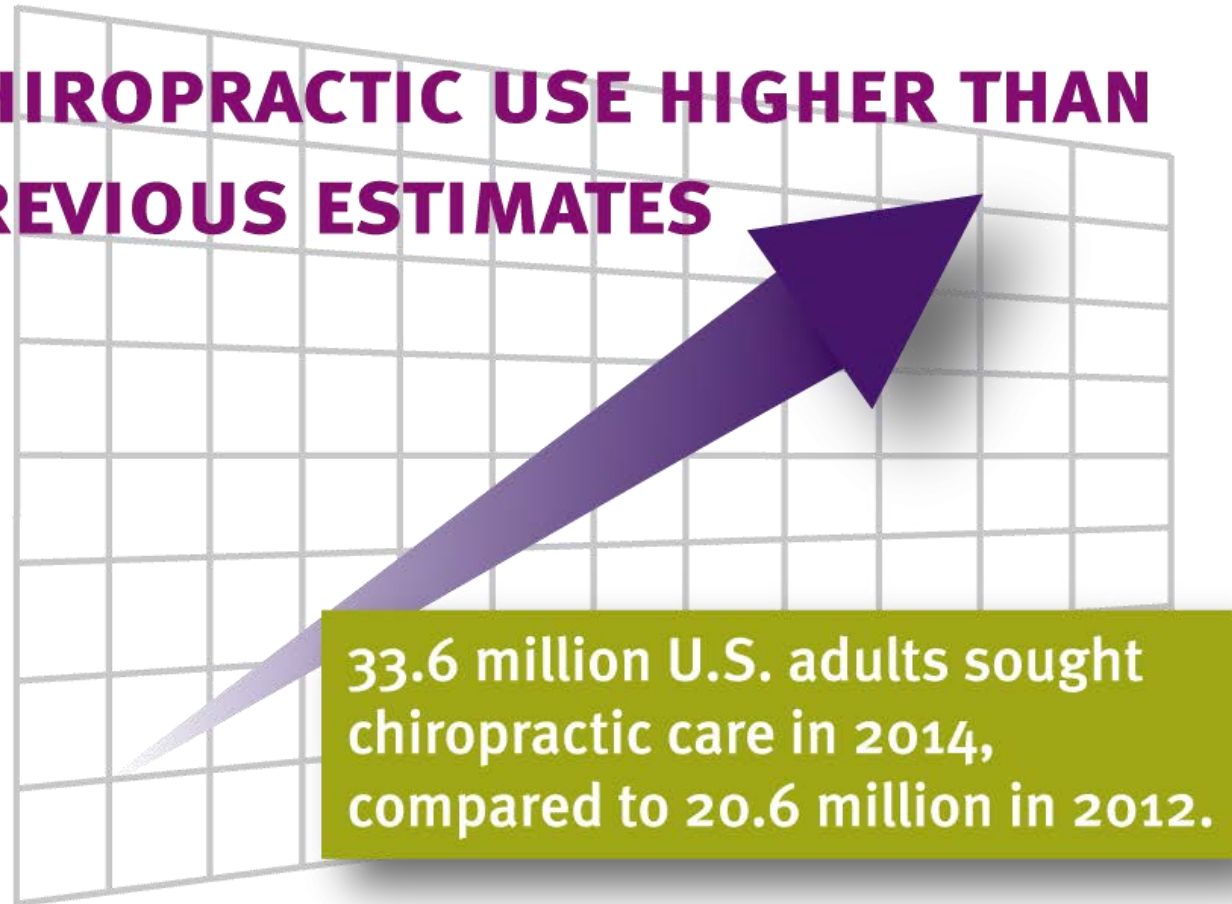


Chiropractic employment is projected to grow faster than the average for all occupations.

Change in employment now through 2024.

Source: U.S. Bureau of Labor Statistics, Employment Projections Program, 2014-2015

# CHIROPRACTIC USE HIGHER THAN PREVIOUS ESTIMATES



**PALMER** College of Chiropractic

*The Trusted Leader in Chiropractic Education\**

Source:  
2015 Gallup-Palmer College of Chiropractic Inaugural Report:  
*American's Perceptions of Chiropractic* (08/15)



**PALMER**  
Chiropractic Clinics

*The Trusted Leader in Chiropractic Education®*

# CHIROPRACTIC EMPLOYMENT OUTLOOK

A good investment



## COMPETITIVE SALARIES<sup>2</sup>



## STRONG JOB GROWTH PREDICTED<sup>3</sup>



SOURCES: 1 [WWW.MARKETWATCH.COM/STORY/10-PROFESSIONS-WITH-THE-BEST-JOB-SECURITY-2015-03-20](http://WWW.MARKETWATCH.COM/STORY/10-PROFESSIONS-WITH-THE-BEST-JOB-SECURITY-2015-03-20),  
2 [WWW1.SALARY.COM/CHIROPRACTOR-SALARY.HTML](http://WWW1.SALARY.COM/CHIROPRACTOR-SALARY.HTML), 3 [WWW.BLS.GOV/OOH/HEALTHCARE/CHIROPRACTORS.HTM](http://WWW.BLS.GOV/OOH/HEALTHCARE/CHIROPRACTORS.HTM)



# Health career with options

- Start an independent practice
- Work as a group practitioner
- Multi-specialty health group
- Researcher
- Hospital staff
- Corporate chiropractor
- Orthopedics, pediatrics, geriatrics, sports chiropractic



# Live your dream. Be a chiropractor.



Dr. Bill Moreau  
Olympic Chiropractor



Dr. Michael Miller  
New England Patriot Chiropractor

# Chiropractic: Profession Comparison



Chiropractic overlaps with several other forms of manual therapy, including massage therapy, physical therapy, and osteopathy.

# Academic Requirements



- 90 semester credits of college coursework \*
- 24 semester credits of sciences  
Anatomy and General Chemistry specifically included
- GPA 3.0 or above\*\*



# For your career, you:

- Are motivated to help people and want to work in a field where you can make a difference
- Are interested in a healthcare career
- Want to change lives for the better, and be appreciated by your patients
- Want an opportunity to give back to your community

# For your career, you:

- Are biased in favor of a non-invasive, holistic integrative care approach to health and wellness, rather than a focus on disease
- May have had an enlightening experience as a chiropractic patient, or been influenced by a chiropractic friend or mentor
- Want the ability to set your own hours, be your own boss; a job that allows a balance in your personal life
- Want to make a reasonable living with a good return on your educational investment of time and money

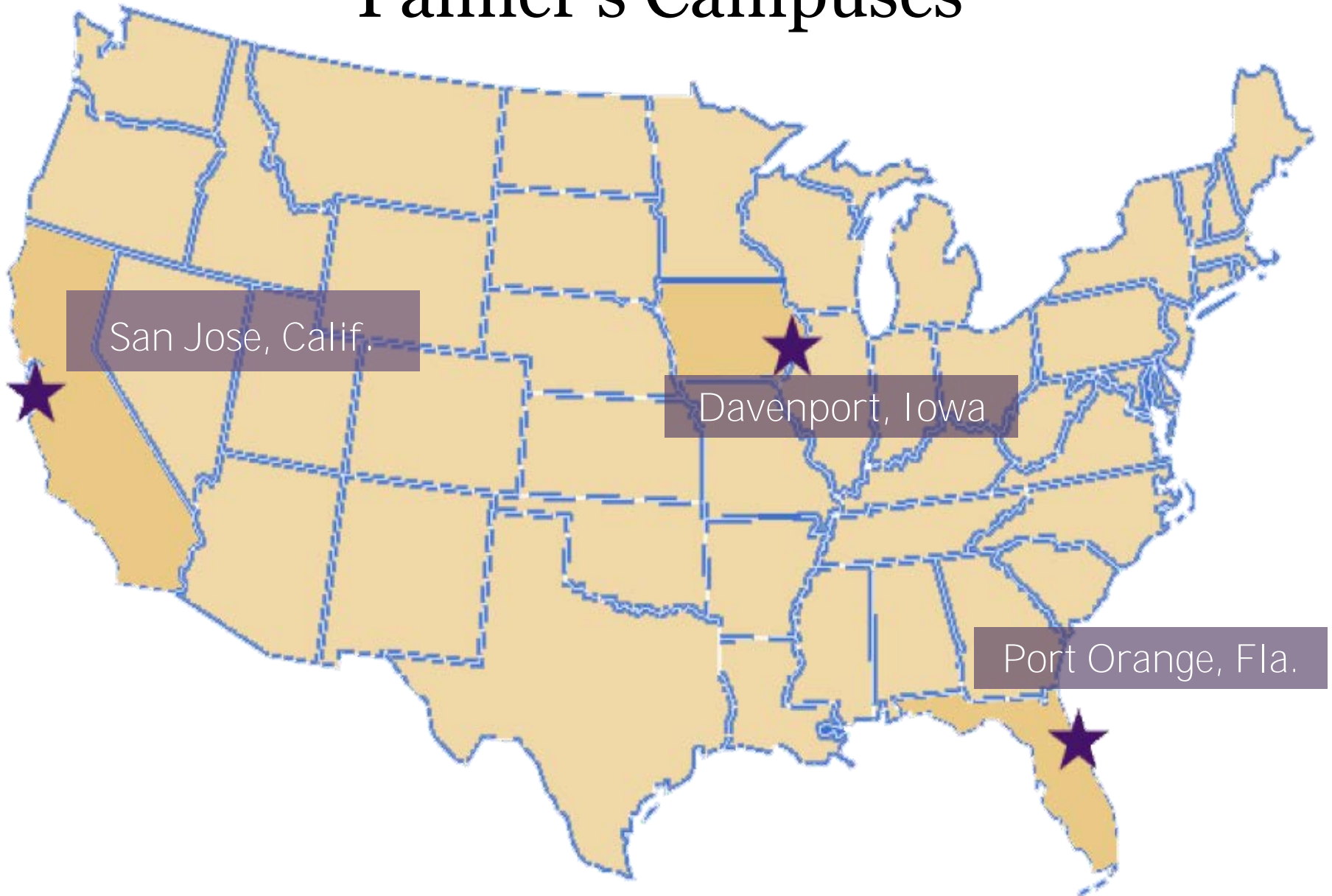


# PALMER

College of Chiropractic

*The Trusted Leader in Chiropractic Education<sup>®</sup>*

# Palmer's Campuses



# Value of a Palmer education

Name  
Recognition





# Why Palmer?



Dennis M. Marchiori, D.C.  
Chancellor



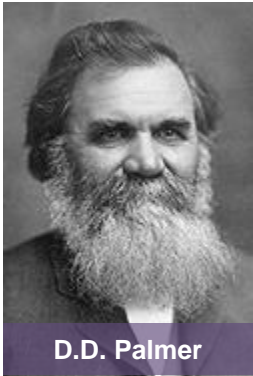
William Meeker, D.C.  
President, San Jose



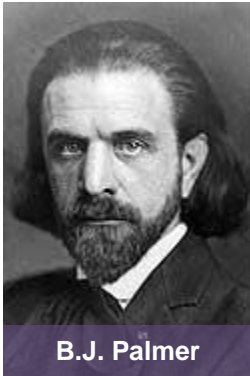
Peter Martin, D.C.  
President, Port Orange

The first and largest  
chiropractic college

*Foundation to foreword thinking*



D.D. Palmer



B.J. Palmer

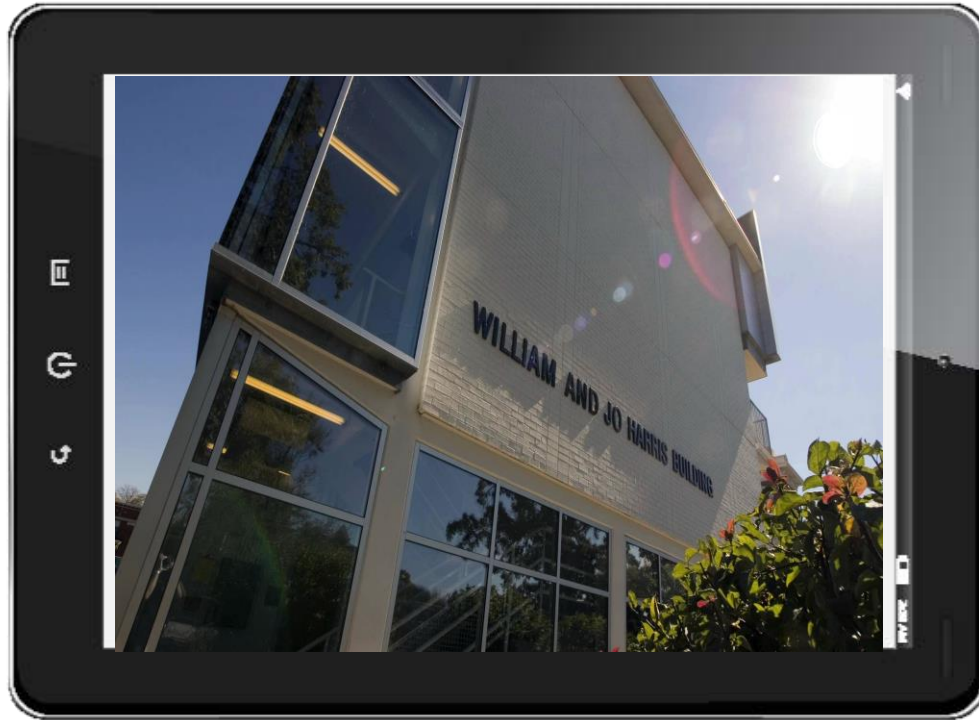


Mabel Heath Palmer



David D. Palmer

# Why Palmer?



## **World's largest** chiropractic research center

*The largest and most highly funded research effort in the chiropractic educational community.*

# Why Palmer?



## Center for Business Development

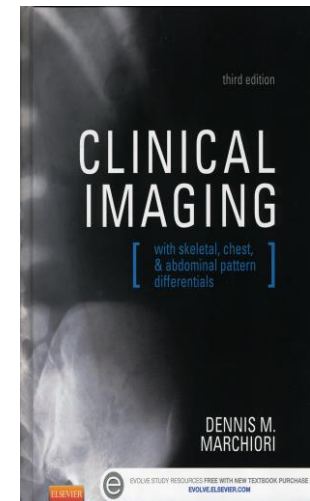
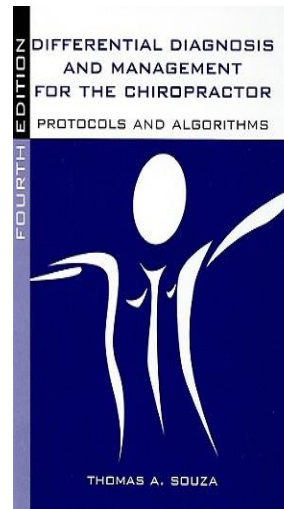
*Providing students and alumni with the business skills they need to build a successful career in chiropractic.*

# Why Palmer?



Palmer faculty  
wrote the books

*Read their textbooks at other  
colleges ... be taught by them at Palmer.*



# The Palmer Advantage: Technique

The core curriculum courses in the Palmer Package are mostly organized by regions of the spine, including courses on cervical, thoracolumbar, pelvic and extremity adjusting technique and management.

Some of the most popular:

- Toggle Recoil
- Diversified
- Thompson
- Gonstead



# Helping you succeed

- Scholarships and grants available
- Financial Planning staff will help
- Federal Work Study Program – work on campus to reduce your student debt load
- Yellow Ribbon Program eligible for veterans





# Helping you succeed

Palmer students perform well above Council on Chiropractic Education benchmarks for the National Board of Chiropractic Examiners exam.

# Student Scholarships

**\$2,943,611**  
2013-14

**\$3,116,620**  
2014-15

**\$4,087,946**  
2015-16\*

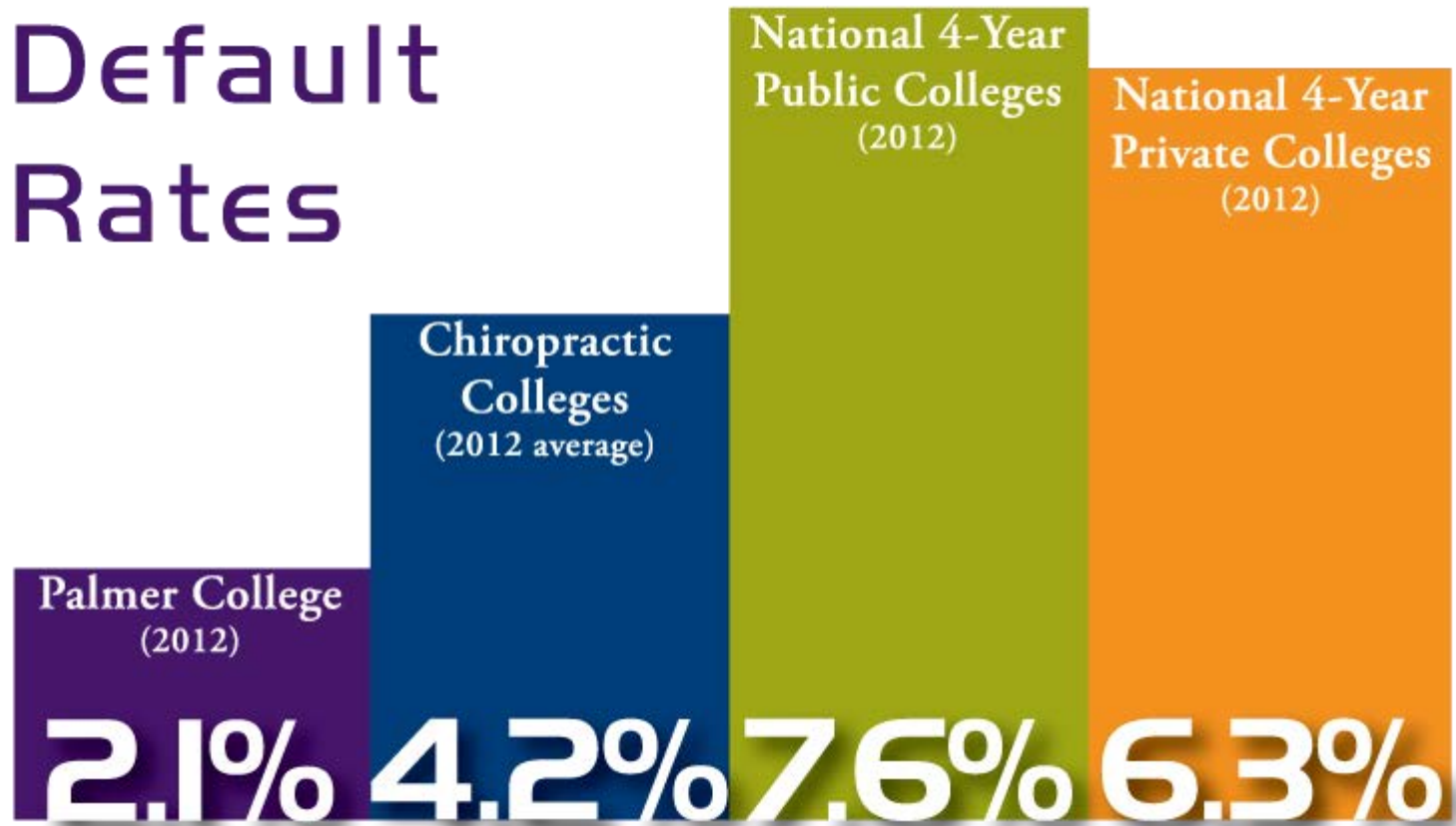
\*awarded through 4/30/16

 **PALMER** College of Chiropractic  
*The Trusted Leader in Chiropractic Education\**

Source:  
2015-2016 Palmer College of Chiropractic Annual Report  
[www.palmer.edu/report/15-16](http://www.palmer.edu/report/15-16) (7/16)



# Student-loan Default Rates



**PALMER** College of Chiropractic

*The Trusted Leader in Chiropractic Education\**

Source:

2015-2016 Palmer College of Chiropractic Annual Report

[www.palmer.edu/report/15-16](http://www.palmer.edu/report/15-16)


(7/16)





**PALMER**  
College of Chiropractic

*The Trusted Leader in Chiropractic Education®*

# Palmer Student Loan Repayment Rates Among the Best

96.5% 

93% 

86.3% 

**Palmer College earns top scores in study by Brookings** May 6, 2015

*In a [new study by the Brookings Institution](#), Palmer College of Chiropractic's Davenport campus earned a top score of 100 with regard to loan repayment rates (a common measurement of student financial success after graduation) and earned a score of 99 for occupational earnings power (a measure which expresses the average market value of the career for which the college prepared its graduates).*

According to [MarketWatch.com](#), Palmer also is the fourth top college “with highest value added with respect to loan repayment.” The Brookings’ study, titled “Beyond College Rankings: A Value-Added Approach to Assessing Two- and Four-Year Schools,” was authored by Jonathan Rothwell and Siddharth Kulkarni.

# Connect with Palmer!

**Bill Riley**

**[bill.riley@palmer.edu](mailto:bill.riley@palmer.edu) / Bill-at Palmer Riley**



**@palmercollege**

**Western University of Health Sciences**  
**Pomona, California**



**College of Dental Medicine**



**Western University**  
OF HEALTH SCIENCES

*The discipline of learning. The art of caring.*

# ***Jeffrey L. Turchi, DDS***

BA History, UCLA 1980

DDS, University of the Pacific School of Dentistry 1988

Private Practice in Palos Verdes and Mission Viejo, CA 1988-2006

Director of Clinical and Educational Affairs, J. Morita USA 2006-2011

Group Practice Director, UCLA School of Dentistry 2011-2013

Assistant Professor/ Manager of Admissions and Recruitment/ Coordinator of CE,  
Western University College of Dental Medicine 2013- Present

# WesternU of Health Sciences

- College of Osteopathic Medicine
- College of Allied Health Professions
- College of Pharmacy
- College of Graduate Nursing
- College of Veterinary Medicine
- College of Podiatric Medicine
- **College of Dental Medicine**
- College of Optometry
- Graduate College of Biomedical Sciences



# “Your Success is Our Success”

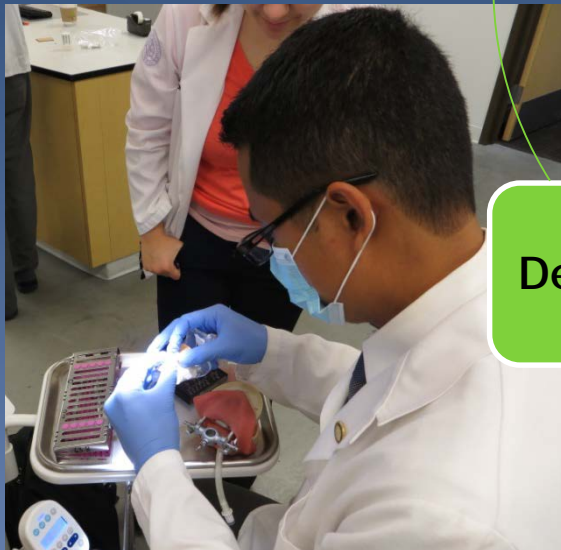
Dr. Bradley Henson  
Associate Dean- Research and Biomedical Sciences



Respect

SHARED VALUES

Integrity



Dedication

Compassion



# *Our Vision*

***“We aspire to create a premier educational environment that fosters continuous professional growth and promotes individual dignity for all.”***





# ***Our Mission:***



***We will achieve our vision through the purposeful pursuit of an innovative, integrated curriculum; offering patient centered care in a setting using advanced technology and supports interprofessional practice; employing and generating basic and translational research.***



*We will achieve our vision through the purposeful pursuit of an **innovative, integrated curriculum**; offering patient centered care in a setting using advanced technology and supports interprofessional practice; employing and generating basic and translational research.*





Western University  
OF HEALTH SCIENCES

*The discipline of learning. The art of caring.*

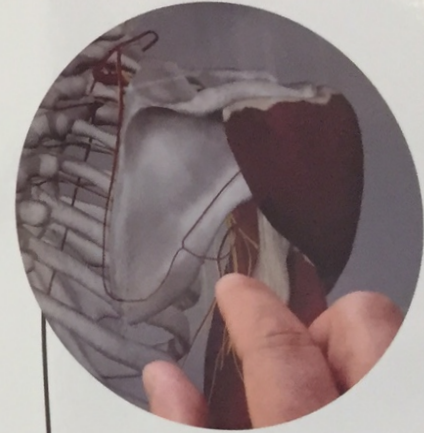
## J&K Virtual Reality Learning Center Transforming Medical Education



*Anatmage*  
**TABLE**  
Virtual Dissection




Intelligent Learning Path



**fusion.tech**  
innovative immersive education

**realizeit**  
TM



 **oculus**

 **zSpace**





# *Anatomage*

# TABLE

## Virtual Dissection



- **Developed at Stanford University**
- **Students “dissect” the body and move through layers of tissue to see the structures**
- **With the touch of a finger, students can expand the size of a body section to study its details, and turn that body part, or the whole body 360 degrees, to study from all angles.**

*Anatomage*  
**TABLE**  
Virtual Dissection



# ***Our Mission:***

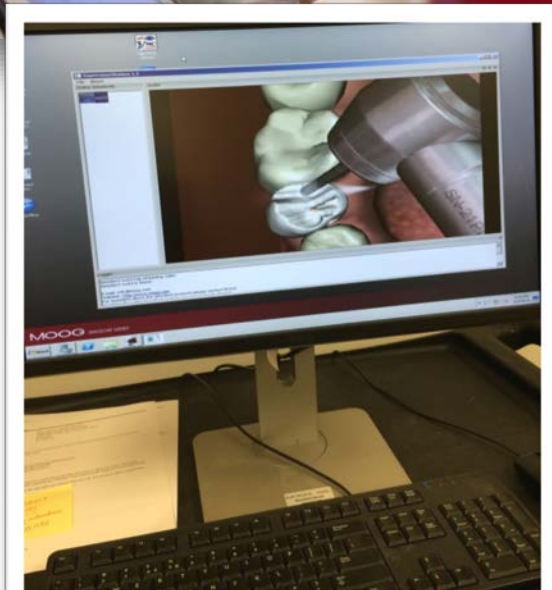
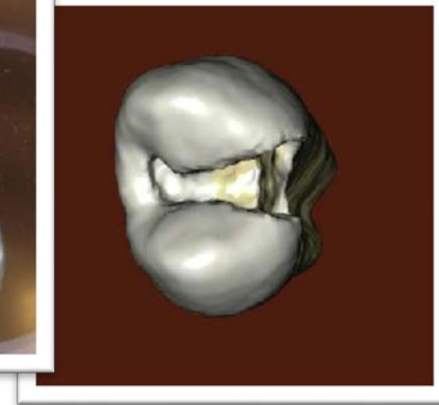
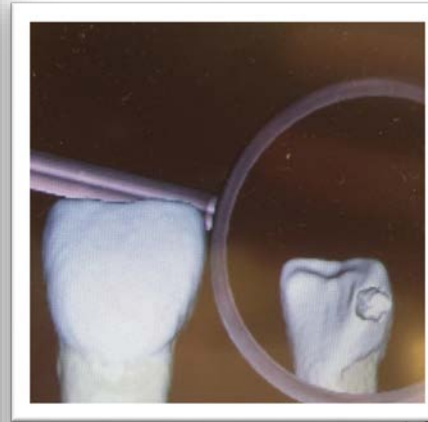




*We will achieve our vision through the purposeful pursuit of an innovative, integrated curriculum; offering patient centered care in a setting that uses **advanced technology** and supports interprofessional practice; employing and generating basic and translational research.*



# Virtual Simulation: MOOG



# CADCAM Technology by E4D

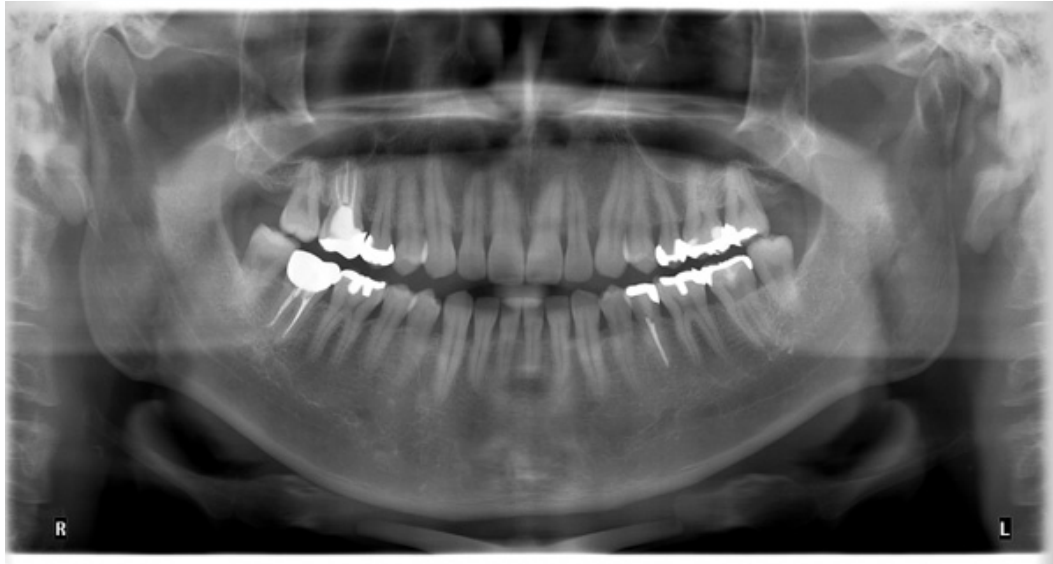
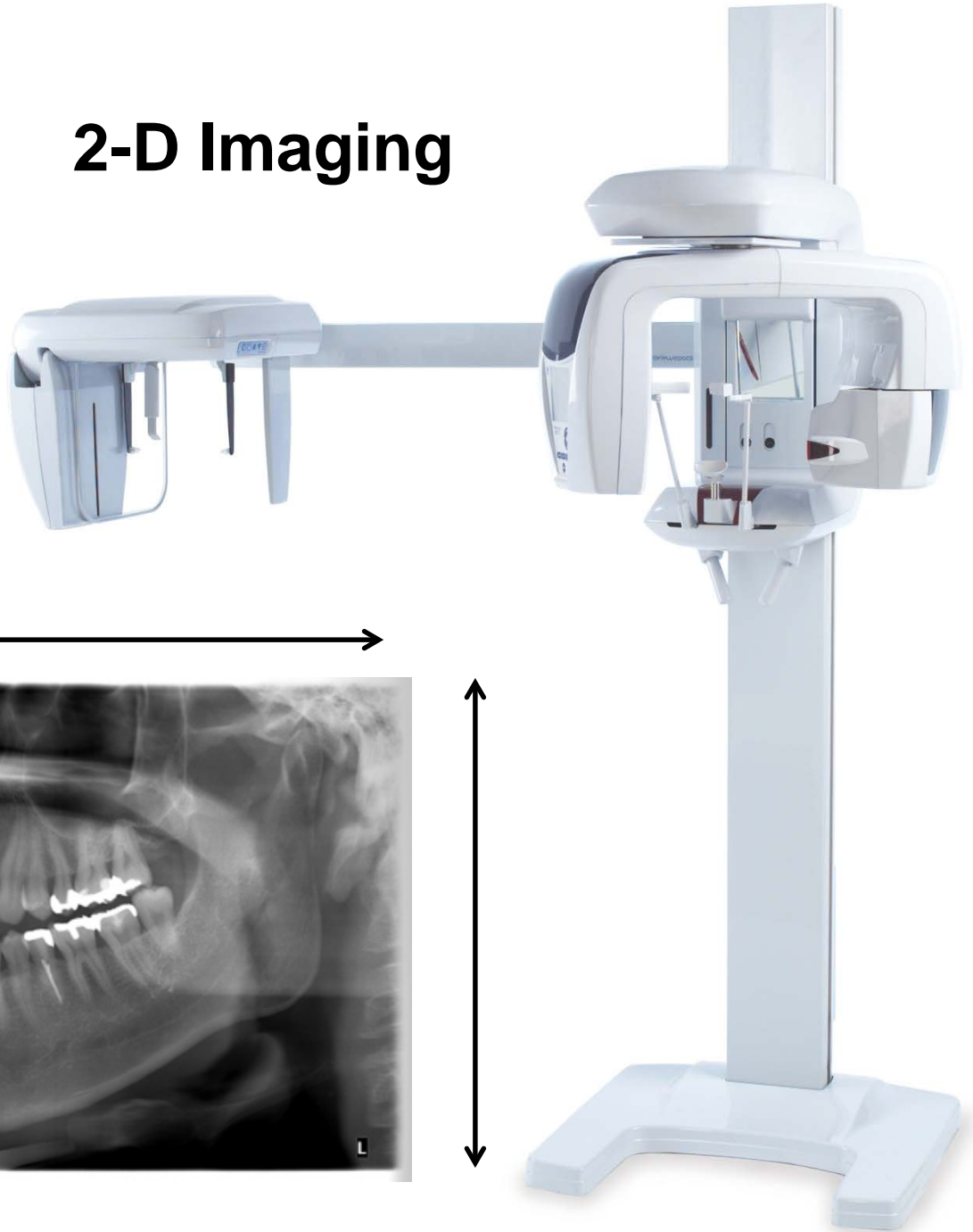




**CERTIFIED  
P R O V I D E R**



# 2-D Imaging



Axial



Coronal



Sagittal

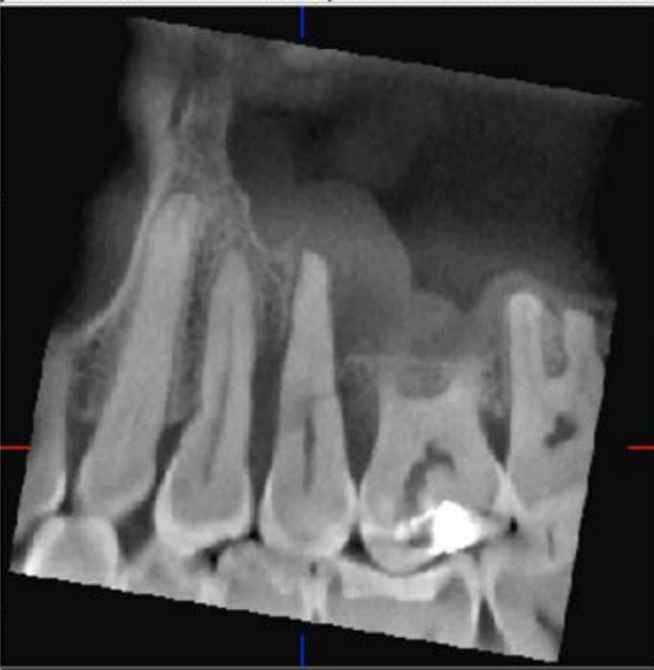




Original Angle: 0.0 deg.  
Slice Interval: 1.000 mm  
Zoom: 77.20%

A 3D diagram of a tooth is shown, with three axes labeled X, Y, and Z. The X-axis is horizontal, the Y-axis is vertical, and the Z-axis is diagonal. The tooth is colored in shades of blue and green.

Slice Position. Voltage: 80.0 kV  
Z: -7.914 mm Ampere: 5.0 mA  
Y: -2.100 mm Filter:  
X: -1.776 mm Part: ARCH\_L





# Curricular Building Blocks

Basic and Biomedical  
Sciences

Dental Sciences

Interprofessional  
Education

Comprehensive Patient  
Care

Community-Based  
Dental Education

# Curricular Building Blocks

Basic and Biomedical  
Sciences (NDBE 1)

Dental Sciences

Interprofessional  
Education

Comprehensive Patient  
Care

Community-Based  
Dental Education

# Curricular Building Blocks

Basic and Biomedical  
Sciences (NDBE 1)

Dental Sciences  
(NDBE 2)

Interprofessional  
Education

Comprehensive Patient  
Care

Community-Based  
Dental Education

# Curricular Building Blocks

Basic and Biomedical  
Sciences (NDBE 1)

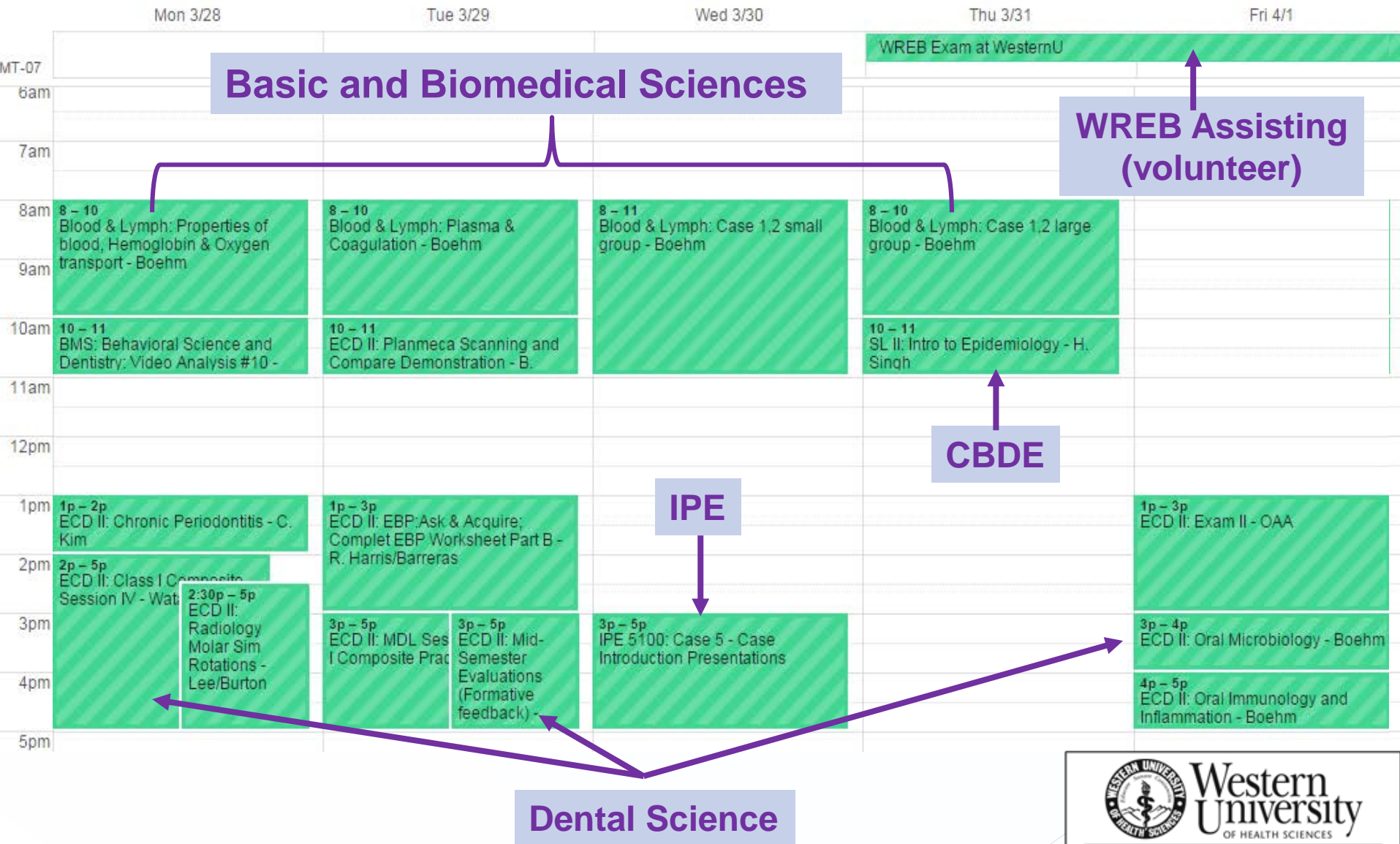
Dental Sciences  
(NDBE 2)

Interprofessional  
Education

Comprehensive Patient  
Care  
(State Licensure Exam)

Community-Based  
Dental Education

# A week in the life of a first year dental student



# Essentials of Clinical Dentistry

## Didactic

- Lectures
- On-Line Preparation

## Practice

- Simulated Treatment
- Self/ Peer-Assessment
- Formative Feedback

## Assessment

- Tests
- Clinical Procedures

## Application

- The Dental Center
- Community-Based Care



# Clinical Education Program



- General Dentistry Model
- Managing Partner/ Team Leaders (6:1)
- Procedure Competency Assessment
- Practice Management Rotations



# Community-Based Clinical Education

## D1

- Service Learning
- Oral Health Education
- Preventive Interventions

## D2

- Clinical Service Learning
- Preventive and Basic Restorative Care

## D3

- One Day Site Rotations
- 5 Week Rotations
- Full Scope of Services

## D4

- 7 Week Rotations
- Full-Scope of Services
- Public Health Elective



# Community-Based Dental Education



# Western U Class of 2021 GPA Averages and DAT Mean Scores

AADSAS Applications Received = 2,994

Interviews Granted = 373

- Average GPA:
  - Science GPA = 3.28
- DAT Average Scores:
  - Perceptual Ability = 20
  - Total Sciences = 20
  - Academic Average = 20
  - Reading Comprehension = 21
- Class Size = 69



# WesternU College of Dental Medicine Class of 2022 Application Process

- ◉ Associated American Dental Schools Application Service (AADSAS)
  - > Available June 1, 2018
  - > Deadline December 1st 2018
- ◉ Supplemental Application
  - > Available on our website June 1, 2018
  - > Deadline December 1st 2018
- ◉ Dental Admission Test (DAT)
  - > Must be submitted by October 15, 2018
- ◉ Interviews are required prior to acceptance

# WesternU College of Dental Medicine Admission Requirements

- Minimum of 90 semester or 135 quarter hours
- Computer literacy on a laptop computer
- Complete the Dental Admission Test (DAT)
- Successfully complete the following prerequisites:
  - > General Biology with lab (2 semesters/3 quarters)
  - > General Chemistry with lab (2 semesters/3 quarters)
  - > Organic Chemistry with lab (2 semesters/3 quarters)
  - > General Physics with lab (2 semesters/3 quarters)
  - > College English/English Composition (2 semesters/3 quarters)

# Admissions continued

- Additional Courses Recommended:
  - › Biochemistry\*\*\*\*\*
  - › Human Anatomy
  - › Human Physiology
  - › Psychology
  - › Genetics
  - › Microbiology\*\*\*\*\*
  - › Conversational Spanish
- Standardized Examinations:
  - › Dental Admission Test (DAT)
    - Valid for 3 years
    - Application not considered before DAT scores received
- Test of English as a Foreign Language (TOEFL)
  - › Not a US Citizen & not received a bachelor's degree in the US

# Valuable Outcomes

- ◎ CODA Accreditation :  
“Approved without reporting requirements”
- ◎ 100% First-Time Pass Rate NDBE I (Class of 2018)
- ◎ 91-92% First-Time Pass Rate NDBE II
- ◎ 98% On-Time Graduation
- ◎ 95% First-Time Pass Rate WREB

# Timing of Application

Admission at most dental schools is “rolling”. Many schools have a large percentage of their class full by the end of December.

The message here is.....

**APPLY EARLY!**

# Admissions Counselors

## Last Name A-L

Annica Correa

(909) 469-5231

[acorrea@westernu.edu](mailto:acorrea@westernu.edu)

## Last Name M-Z

Andrea Nuno

(909) 469-5697

[anuno@westernu.edu](mailto:anuno@westernu.edu)





# Traits/Qualities of Successful Applicants



Community Service

Exposure to Dentistry

AADSAS Personal Statement



Science GPA

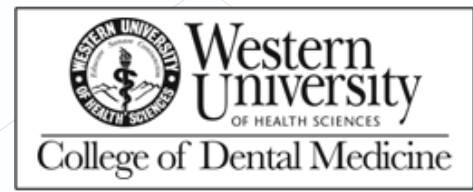
Supplemental Application

DAT

Letters of Rec



*Thank you!*



# Pathways to Nursing

**Catherine Wilde McPhee, FNP**

**Azusa Pacific University School of Nursing**

Assistant Professor and Academic Practice Partnerships & Clinical Placements



Link to Video

<https://www.youtube.com/watch?v=U7JW24WWPK8>





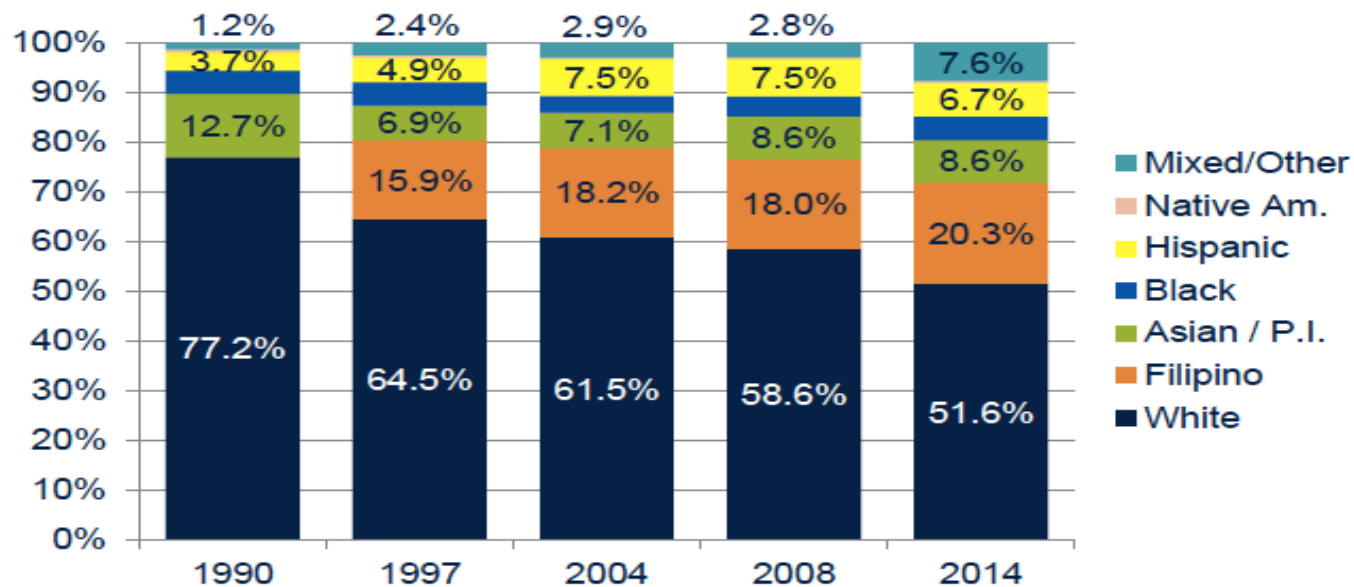
## Value of Diversity

- 44 states & 41 countries represented within the student body
- 100+ graduate and professional programs
- 8 locations across Southern California

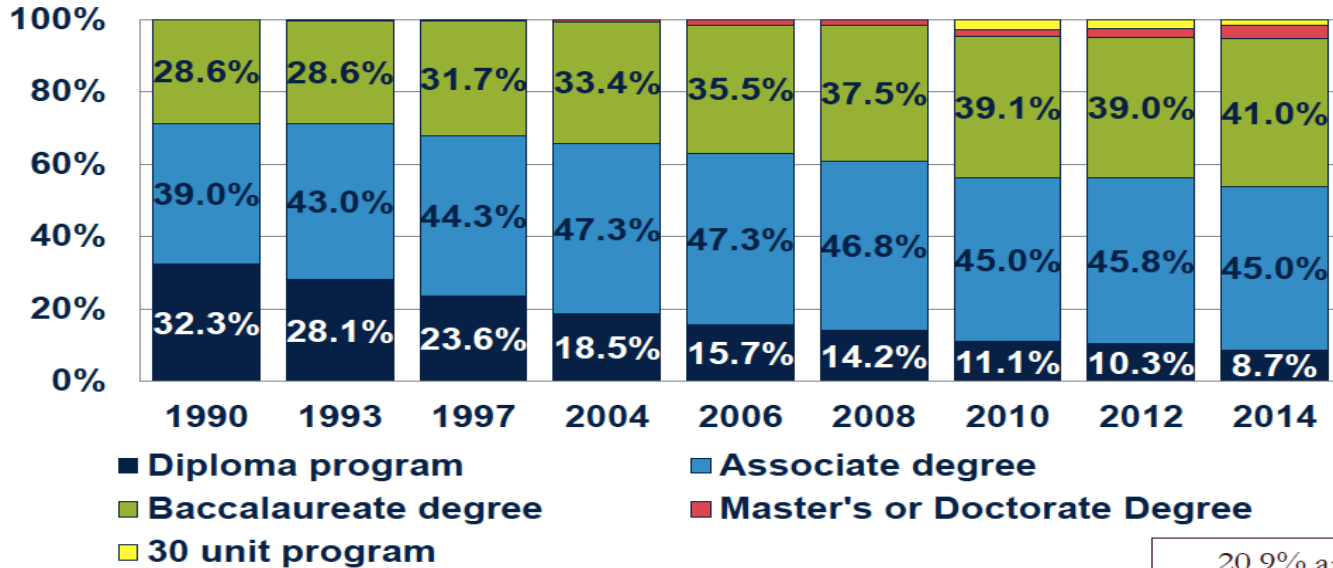
## Accreditation & Distinctive

- Approved by California BRN
- Accredited by CCNE & WSCUC
- School of Nursing named 8<sup>th</sup> in the nation by *USA Today* for 2015-16
- 13:1 student-to-faculty ratio
- Personable faculty currently in the field

## Racial/ethnic mix of working RNs



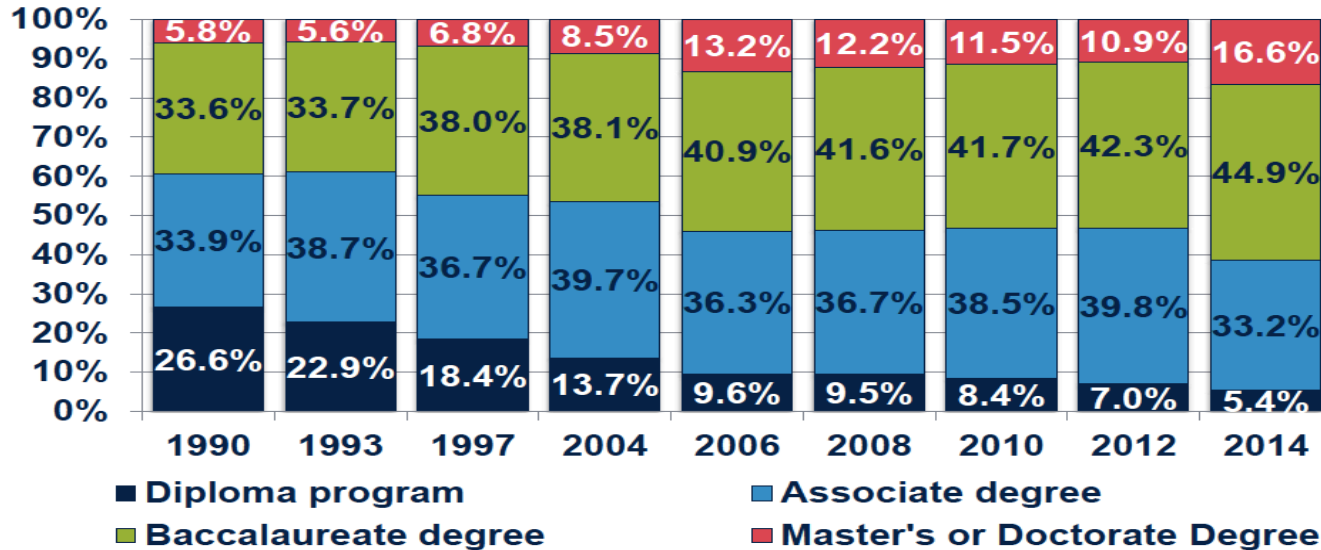
# Initial nursing education for working RNs



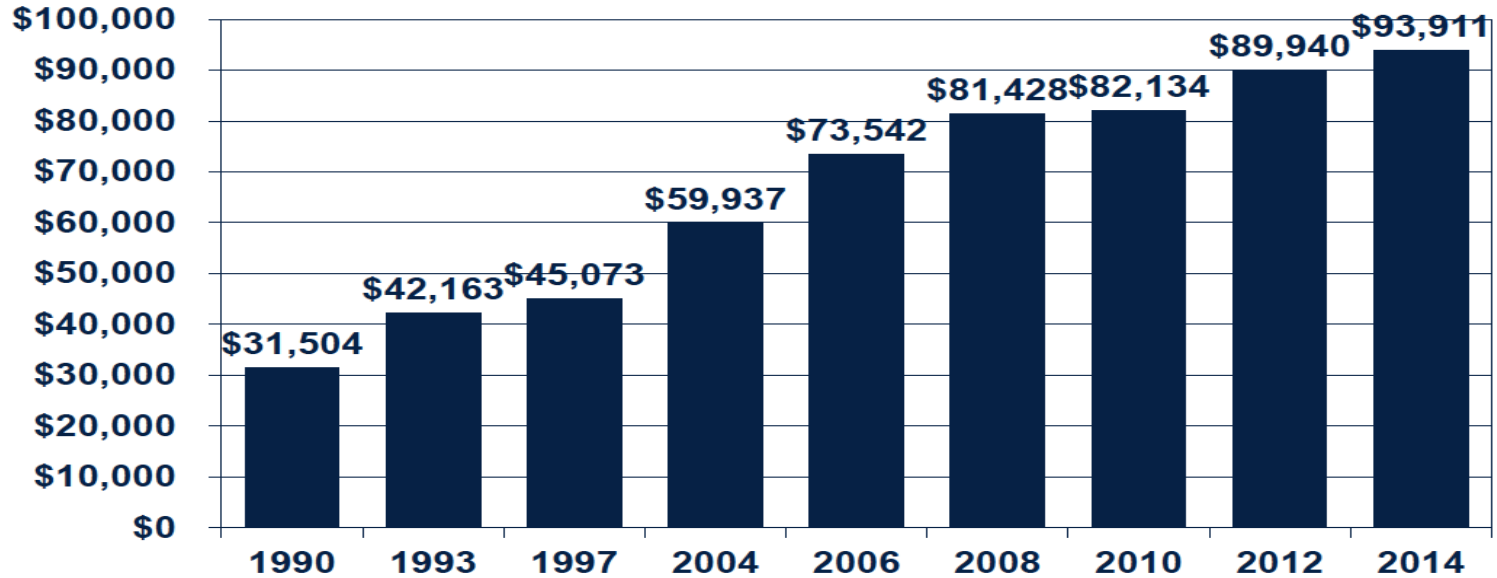
20.9% are internationally-educated



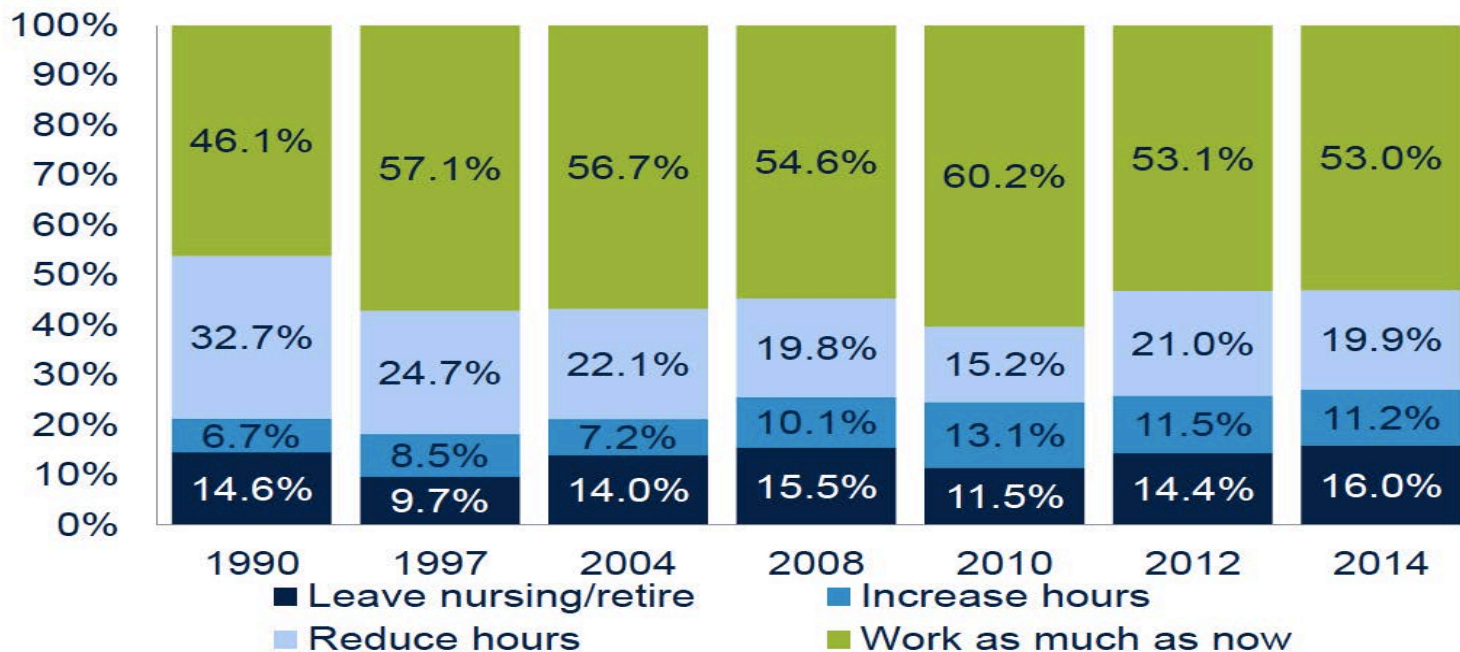
## Highest level of nursing education of working RNs



## Average income from all nursing positions



## Plans for next 5 years for working RNs



# Trends in Nursing



- In the Institute of Medicine (IOM) 2010 Future of Nursing report, they recommended **80% of nursing workforce be educated at the BSN or higher level** by 2020.
- 2014 Update: 61.5% of California nurses achieved this

# Trends in Nursing



- 2016 marked the first year BSN students made up 50% of all students in California pre-licensure programs
- CA Employment Development Department (EDD) forecasts **10,500 new nurses needed annually through 2018**
- APU graduates approximately 4% of newly graduated nurses in CA with more than a 90% employment rate within 12 months of graduating

# Trends in Nursing



- 9-10% vacancy rate for nursing faculty
- 2016 HASC identified **need for specialty unit nurses in Southern California:**
  - 2,320 Critical Care
  - 1,392 Emergency Room
  - 1,072 Perioperative
  - 864 Labor & Delivery



# School of Nursing

- Recently celebrated 40 years
- Creates difference makers
- Prepares compassionate nurses for leaders, research & education to transform healthcare
- 5 campuses & online
- Close to 1,800 nursing students:
  - 50% UG & Entry Level Masters
  - 50% Graduate and Doctoral level

# Pathways into Nursing

CNA	BSN-2+2 Upper-Division Transfer Program	Nurse Anesthetist (APN)
Diploma	RN to BSN (1-1 1/2 years)	*MSN with Clinical Nurse Specialist (CNS)
LVN/LPN (1-2 years)	ELM Entry Level Masters MSN Nursing Education MSN Health Care Administration & Leadership	*MSN with Nurse Practitioner (APN) specialties
ADN (2-3 years)	Advanced Practice (APN) School Nurse Credential	Post Masters Certificate
BSN Traditional (4 years)	Nurse Midwife (APN)	Doctorate: PhD and DNP.

\* Certification with the CA BRN, eligible for National Certification exam.





### Undergraduate Programs

Bachelor of Science in Nursing (BSN)

BSN (2+2 Upper-Division Transfer Program)

LVN to BSN and LVN to RN

RN to BSN (also online)

Bridge to BSN

International Opportunities

### Master's Programs

Master of Science in Nursing (MSN)

Entry-level Master's (ELM) Program

MSN in Healthcare Administration and Leadership

MSN in Nursing Education (also online)

MSN with CNS Specialties

MSN with NP Specialties

Post-Master's Certificates

### Doctoral Programs

Doctor of Philosophy in Nursing

Doctor of Nursing Practice

# APU School of Nursing: RN to BSN Collaborative Model

- ADN Programs are essential to healthcare in California
- ADN students at Community College Partners with APU can have sequential enrollment in the APU RN to BSN Program
- Chancellor Office expectation in CA is completion of BSN within 1 year of ADN graduation with no repetition of courses
- 18% of ADN students in CA dually enrolled in collaborative ADN to BSN program mode

# APU School of Nursing

- Field & Clinical Experience
- Public Health Certificate
- International Students
- General Education Units & Pre-requisites

# Concepts for Counselors



- Many acute care hospitals have earned or are seeking magnet designation: 80% of nurses will be BSN prepared or higher
- Counsel the whole person toward the best choice
- Health care and nursing are cross-generational
- Millennials have a lot to offer with technological advancement and insights
- LVN programs at community colleges are preferred

# Advice for Students



- Get A's in 4 sciences: Anatomy, Physiology, Micro, and Chemistry
- Science pre-requisites must be completed within past 5 years for many programs
- Online sciences
- Take A&P I & II at the same school

# How to Choose for BSN



- Faculty education (MSN, PhD, DNP) and ratio to student
- Personal attention
- International Honor Society of Nursing, Sigma Theta Tau Chapter
- Progression of LOA needed (class availability)
- Rigorous undergrad leads to graduate-level success
- Reputation of school & program
- Not by least costly, quickest, or easiest

# DACA Policies

- We will do everything possible to ensure our students have access to services & support for them to thrive
- Variety of current resources & examining other avenues
- Financial aid advisors
- “Tip sheet” for students
- Compliance with Family Educational Rights and Privacy Act of 1974 (FERPA)



## Today's employers demand

- Honed communication skills
- Capacity to collaborate
- Ability to think critically and creatively

## Outlook for nursing is excellent!

- Graduates can be choosy
- Shortages of nurses
- Increased needs of the public



**Thank you for investing in the  
education of our future nurses!**

**Catherine Wilde McPhee, FNP**  
cmcphée@apu.edu



**USC** Mrs. T.H. Chan  
Division of Occupational Science  
and Occupational Therapy



**Amber Bennett, OTD, OTR/L**  
*Assistant Director of Admissions*  
*Assistant Professor of Occupational Therapy*  
USC Mrs. T.H. Chan Division of Occupational Science & Occupational Therapy  
University of Southern California

# (Occupation)al Therapy

Occupation = *meaningful activities* that occupy one's time throughout the day:

- Morning and nighttime routines
- Late-night coffee breaks with friends
- Interacting with friends online
- Taking yoga classes
- Cooking a home-made meal
- Driving
- Learning about your future educational and career options



# Occupational Therapy (OT)

- A holistic health care profession focusing on the art and science of helping individuals to build independent, healthy and meaningful lives despite disease, disability, lifestyle or injury.
- Promoting meaningful engagement in the activities that matter most to each individual.
- Analyzing the biological, psychological and social nature of disability and providing therapeutic interventions that increase functional ability and decrease extenuating limitations to people across the lifespan.

# Occupational Science (OS)

- The basic science of how human health is affected by engagement in occupations.
- Established at USC in 1989 to provide the clinical profession of occupational therapy with its own scientific and research base for guiding clinical practices.
- Interdisciplinary links with related disciplines including anthropology, sociology, psychology, neuroscience, physiology, preventive medicine, biomedical engineering, rehabilitation science, gerontology and public health.

# Where do OTs work?

- Hospitals
- Private clinics
- Schools
- Home health
- Corporations
- Community centers
- Psychiatric hospitals
- Skilled nursing/assisted living facilities
- University medical and research centers



# Our Professional Program

- Two-year Master of Arts degree designed for students with a bachelor degree in any field other than occupational therapy
- Three core “practice immersions”:
  - Adult Physical Rehabilitation
  - Mental Health
  - Pediatrics
- Fieldwork: Level I and II
- Leadership capstone
- Elective options – allow for specialization
- Comprehensive exam

# Why USC?

- Ranked in the nation's top 3 programs
- 1<sup>st</sup> post-professional M.A. program in the U.S. (1962)
- Advanced degrees available
- World's 1<sup>st</sup> Ph.D. program in Occupational Science (1989)
- 96 faculty members
- \$10.4 million in active federal research funding (and more than \$27 million in total since 1994)
- Integrated clinical practice arm





# Why USC?

- Prepare as a generalist and choose electives to shape your specialty focus
- International fieldwork options
- OT House apartments for our graduate students
- Research assistantships, tuition scholarships and financial aid are available



# Patient Care at USC Chan

- 39 clinical faculty providing direct patient care
- 65 people (faculty, staff and OTD residents) that support our OT clinical services
- 9 sites of service delivery across Greater Los Angeles including Keck Hospital of USC and Norris Cancer Center
  - ICU, Acute, IRU and service lines including heart failure, epilepsy, comprehensive spine, head and neck oncology, AYA oncology, hands
- OT Faculty Practice
- Student Run Clinic

# Two-Year Master's Prerequisites

*3-4 semester units each*

1. Human Anatomy (with laboratory)\*
2. Human Physiology
3. Introductory Statistics
4. Developmental Psychology
5. Abnormal Psychology
6. Intro to Sociology/Anthropology
7. Medical Terminology (1-2 semester units or certificate)

\*If Anatomy and Physiology are combined, students must take either 1) one combined Anatomy and Physiology course with laboratory worth 6-8 semester units, or 2) two sequential semesters of combined Anatomy and Physiology taken at the same school, totaling 6-8 semester units with a laboratory each semester.

\*Four-week intensive Anatomy and Physiology available in May-June for admitted incoming students.

# Application Process

- Complete an application on OTCAS
- Must be completed and verified by: **NOV 30<sup>th</sup>**
- Complete a baccalaureate degree with a minimum cumulative **grade point average (GPA)** of 3.0 from an accredited college or university (can be in progress at time of application) – in any undergraduate major!
- Send all official **transcripts** to OTCAS directly
  - If more than one semester studied abroad, submit all transcripts to USC Office of Graduate Admissions (<https://gradadm.usc.edu/>)

# Application Process

- Complete the **Graduate Record Examination (GRE)** within five years of planned enrollment  
minimum scores: Verbal:153 Quantitative:144 and Writing: 3.5
- If applicable, complete **TOEFL** or **IELTS**
- **Personal statement**
- **3 Letters of recommendation**
- It is recommended to upload a **resume or CV** through OTCAS with your application

# Application Review Process

- Holistic review process
- Admissions Committee reviews 5 main areas:
  - Cumulative GPA
  - Prerequisite GPA
  - GRE
  - Letter of recommendation
  - Personal statement

# Admissions Team



- **Liz Carley OTD, OTR/L**  
*Director of Admissions*
  - Phone: (323) 442-2822
  - E-mail: [carley@chan.usc.edu](mailto:carley@chan.usc.edu)
  
- **Amber Bennett, OTD, OTR/L**  
*Assistant Director of Admissions*
  - Phone: (323) 442-2460
  - E-mail: [amber.bennett@chan.usc.edu](mailto:amber.bennett@chan.usc.edu)
  
- **USC Chan Student Ambassadors**
  - Phone: (323) 442-2264
  - E-mail: [ambassadors@chan.usc.edu](mailto:ambassadors@chan.usc.edu)

Online at  
*chan.usc.edu*  
and social media at  
USCChanOSOT

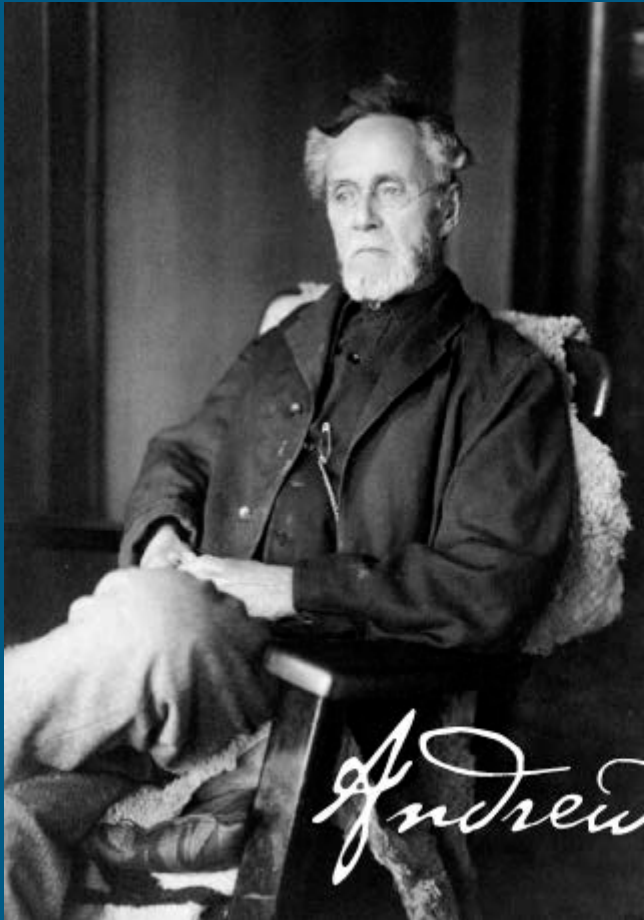




# Osteopathic Medicine: Philosophy, School & Career

Tava McGinty-Jimenez  
Director, Office of Admissions  
&  
DO Counselor

# Osteopathic Philosophy



“A student of life must take in each part of the body and study its uses and relations to other parts and systems”

*Andrew Taylor Still*

# Tenets of Osteopathic Medicine

- Body is a unit
- Structure influences function
- Body has innate ability to heal itself
- Treatment is based on these principles

*“To find health should be the object of the doctor. Anyone can find disease.”*

–AT Still, 1899

# DO Makeup

- More than 5,400 new osteopathic physicians enter the workforce each year.
- More than 20 percent of medical students in the United States are training to be osteopathic physicians.
- Eligible for licensure in all 50 states and full practice rights in 45 countries.
- 33 colleges, 48 locations, 31 states.

# What Does a DO Do?

- Practice full scope of medicine
- Receive same medical training, in addition to 200+ hours of OMM training
- Trained to focus on the whole person
- Students learn how to integrate the patient into the health care process as a partner

# Medical Education

- COMLEX & USMLE
- OMT
- Emphasizes integration of the body's systems
- Single GME Accreditation System

# Medical Education Timeline

- 4 Years- Undergraduate Study
- 4 Years- Osteopathic Medical Degree
- 3-7 Years- Residency
- 1-3 Years- Specialty Fellowship

# Who We're Looking For

- Well-rounded
- Strong communication and interpersonal skills
- Service and leadership
- Clinical experience
- Diverse background
- Knowledge of osteopathic medicine



# Application Process

- WebAdmit
  - Cycle opens May
  - Applications ready for review June
  - Invitation to submit secondary application
  - Invitation to interview
  - Admission decision

# General Admission Requirements

- Anatomy
- Biological/Zoology
- Biochemistry
- Genetics
- Histology
- Immunology
- Inorganic Chemistry
- Microbiology
- Neuroscience
- Organic Chemistry
- Physics
- Physiology
- English
- Behavioral Sciences
- Math
- Statistics

# General Admission Requirements

- Shadowing Experiences
- Letters of Recommendation
- MCAT
  - Association of American Medical Colleges

# Interview Selection

- Counselor review
  - MCAT trend
  - GPA trend
  - Combination of coursework & date
  - Felony & Misdemeanors
  - Experiences
  - And much more...

# Interview Scoring

<b>Student</b>  <b>DOSA</b>	<b>Faculty</b>	<b>Academic</b>	<b>Final</b>
<ul style="list-style-type: none"><li>• Professionalism</li><li>• Communication</li><li>• Interest</li></ul>	<ul style="list-style-type: none"><li>• Experience</li><li>• Critical Thinking</li><li>• Understanding the Role</li><li>• Interpersonal</li></ul>	<ul style="list-style-type: none"><li>• MCAT</li><li>• GPA</li><li>• Upper Division Science</li></ul>	<ul style="list-style-type: none"><li>• Faculty</li><li>• MAC</li><li>• Deans</li></ul>

# Application Tips

- Essay and Interview
  - Why do you want to be a DO, who are you, **how** will you be successful
- When to apply & fee waivers
- Navigating the MCAT
- Who to shadow
- What is included in the GPAs
- Repeated coursework
- Letters of Recommendation

# Interview Tips

- Practice interviewing skills
- Osteopathic knowledge
- Research knowledge
- Be reflective
- Interpersonal translates to PE performance

# AACOM Applicant Pool Profile

- AACOM Applicant Pool Averages
  - 3.45 is mean baccalaureate GPA
  - 501 MCAT is total mean
  - Top feeder colleges: University of Florida, UCLA, and Michigan State University-East Lansing
  - 183,374 applications, 20,836 applicants for 7,317 seats
  - 8.8 applications per applicant
  - Females represent less than half



# Application Predictions

Application numbers will flatten or decrease-

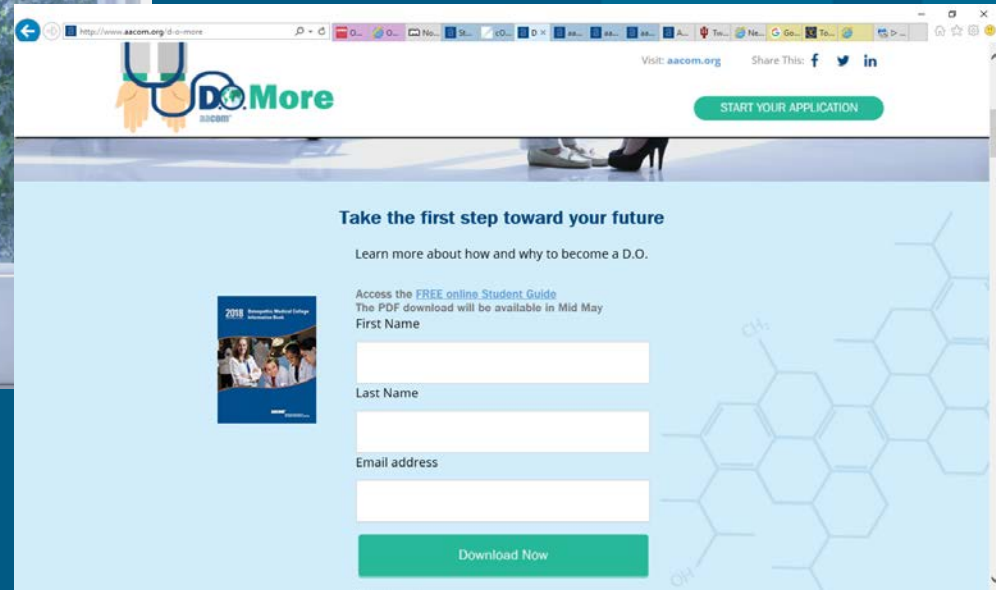
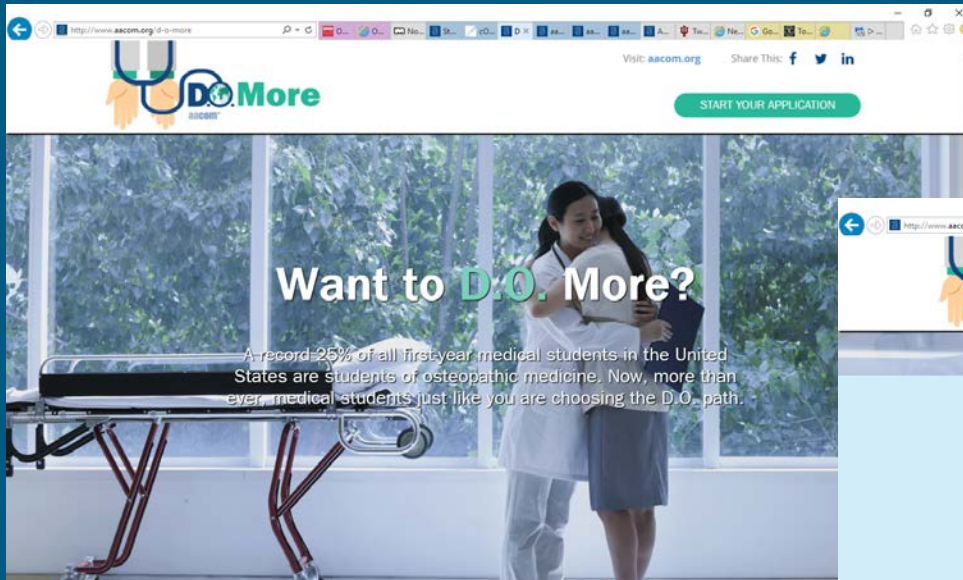
- Census Data:
  - Population decline (less babies were born) for next four years.
  - Decline in those pursuing a bachelor's degree.
  - More career options for less time and money.

Diversity Focus-

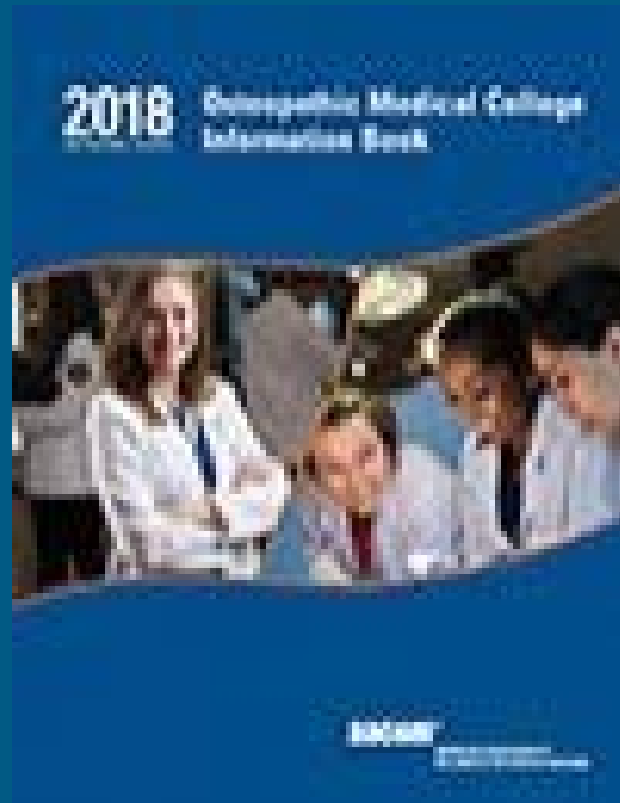
- COCA- Will start to collect and be more diligent with the data.
- AACOM- Added Diversity Statement
- TUN- Added Diversity Policy

# D.O. More

- <http://www.aacom.org/d-o-more>



# Osteopathic Medical College Information Book



# Resources

- <http://www.aacom.org/reports-programs-initiatives/aacom-reports#Latest>
- <http://www.aacom.org/become-a-doctor>
- <http://www.aacom.org/d-o-more>



# Keck Graduate Institute



# Claremont, CA

As part of **The Claremont University Consortium**, KGI is one of seven highly-regarded independent institutions that share a wide range of central facilities and services while providing rigorous curricula, small classes, distinguished professors, and personalized instruction.

# Programs at Keck Graduate Institute

Certificate in  
Bioscience  
Management  
(CBM)

Master of  
Science in Applied  
Life Sciences (MS)

Postbaccalaureate  
Pre-PA Certificate  
(PPA)

Master of  
Business and  
Science (MBS)

Master of  
Science in Human  
Genetics and Genomic  
Data Analytics  
(MSGDA)

Postdoctoral  
Professional Masters  
(PPM)

Doctor of  
Pharmacy  
(PharmD)

Master of  
Science in Human  
Genetics and Genetic  
Counseling  
(MSGC)

Postbaccalaureate  
Premedical Certificate  
(PPC)

Master of  
Engineering in  
Biopharmaceutical  
Processing  
(MEng)

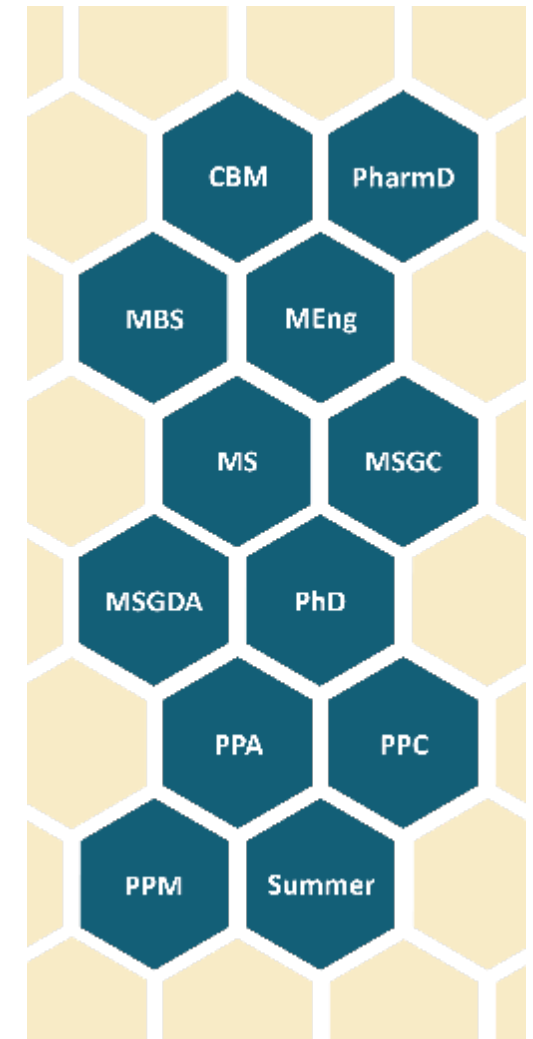
PhD in Applied  
Life Sciences (MS)

Summer  
Programs

# What We'll Explore Today

## KGI School of Pharmacy

- Doctor of Pharmacy (PharmD) Program
- Genetics Programs
  - Master of Science in Human Genetics and Genetic Counseling (MSGC)
  - Master of Science in Human Genetics and Genomic Data Analytics (MSGDA)





# Discussion

Do you have students who are interested in Pharmacy or Genetics?

If not, what are some of the barriers?

# Why Pharmacy?



Integral member  
of the healthcare  
team

Medication  
Experts

Range of  
Career Options

Trusted  
Profession

Give back to your  
community

Most accessible  
healthcare  
providers

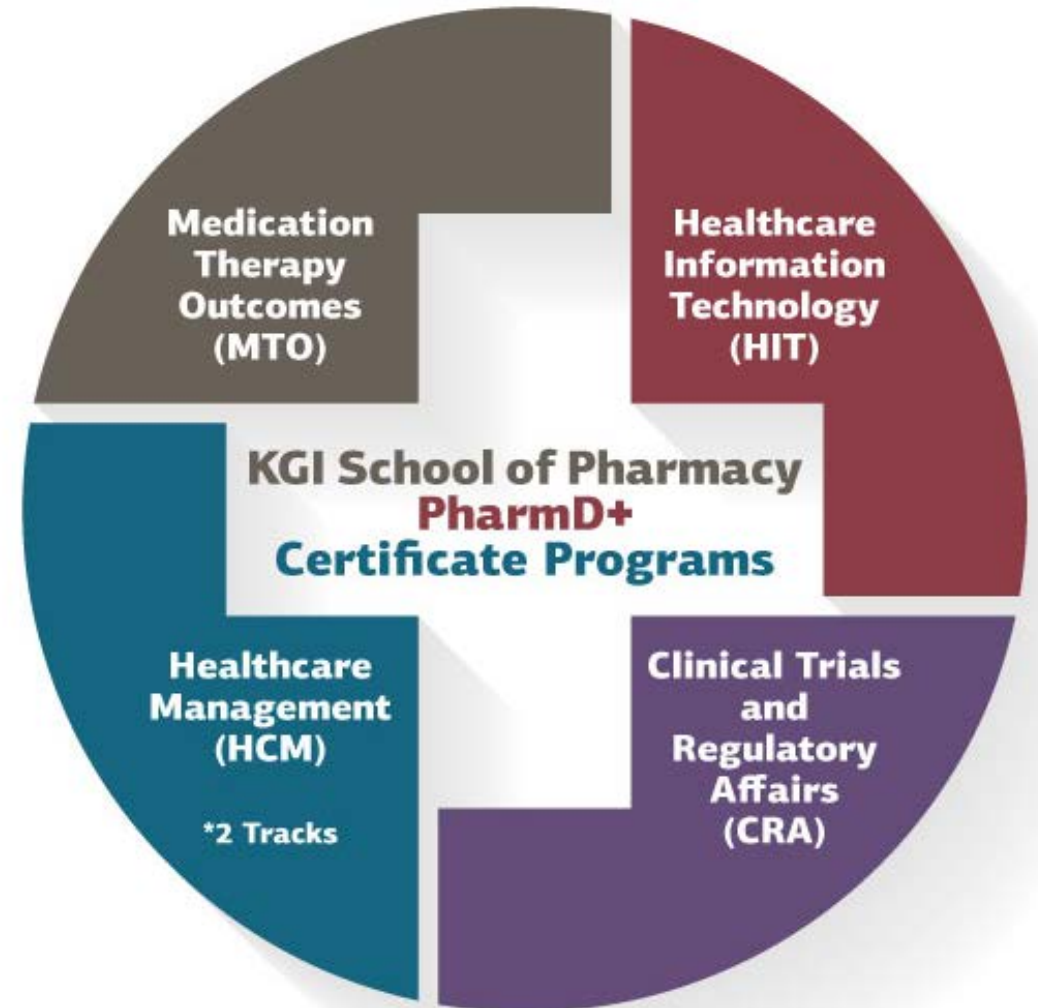
Influence  
healthcare on a  
large scale

Excellent  
Earning  
Potential

Pharmacists Help People Live  
Healthier, Better Lives

Pharmacists Do This Through a  
Variety of Career Options

## KGI School of Pharmacy PharmD+ Certificate Programs



# Exploring PharmD Career Paths: Clinical Trials and Regulatory Affairs



## Example Jobs

- [Medical Science Liaison](#)
- [Medical Communications/Drug Information](#)
- [Executive Director, Regulatory Affairs](#)

## Example Work Settings

- Amgen
- Sanofi
- Pfizer

## Where to find more information:

- [Industry Pharmacists Organization](#)

# Exploring PharmD Career Paths: Healthcare Information Technology



## Example Jobs

- [System Pharmacy Informaticist](#)
- [Medication Management and Electronic Health Records](#)
- [Vice President of Solution Mgmt](#)

## Example Work Settings

- Sharp Healthcare
- Carefusion

## Where to Find More Information:

- [ASHP Section of Pharmacy Informatics and Technology](#)
- [Health Information Management Systems Society](#)

# Exploring PharmD Career Paths: Healthcare Management



## Example Jobs

- [Hospital Pharmacy: Management](#)
- Healthcare Finance and Reimbursement
- [Vice President and General Mgr](#)

## Example Work Settings

- Biopharmaceutical Industry
- Hospital/Health System Pharmacy
- Community Pharmacy

## Where to find more information:

- [American Society of Health Systems Pharmacists](#)
- [LinkedIn](#)

# Exploring PharmD Career Paths: Medication Therapy Outcomes



## Example Jobs

- [Infectious Disease Pharmacist](#)
- [Ambulatory Care – Diabetes Care](#)
- [Health System Pharmacy: Inpatient – Cardiology Specialty](#)

## Example Work Settings

- Hospital/Health System Pharmacy
- Community Pharmacy
- Biopharmaceutical Industry

## Where to find more information:

- [APhA Career Option Profiles](#)



Career Exploration

Prerequisites

Writing Skills

Interview Preparation

# PharmD Career Exploration

- Start early. Why do YOU want to be in this profession?
  - Shadowing; Ask questions of current professionals in the field.
  - Research the profession
  - How have you demonstrated persistence in academic rigor to begin a professional program?

# KGI PharmD Prerequisites



S = SEMESTER CREDIT HOURS • Q = QUARTER CREDIT HOURS

# Writing Skills

- Organize your thoughts and practice.
  - Can the meaning behind what you are writing be understood?
  - If allowed, have someone proofread your work.
- Grammar and spelling count.
  - For KGI, writing is assessed *twice* during the admission process (including an onsite statement).
  - Answer the question that is asked.
  - Communicating clearly is critical both with colleagues and with patients.
- Why do YOU want to be in this profession?

# KGI PharmD Interviews

- Give yourself plenty of time to arrive to the interview.
- Dress professionally.
- Research the school.
- Practice interviewing skills.
  - Career Centers at Undergraduate Institutions
  - Family and Friends
- Be confident with what you have to offer.
- Think about what YOU would want to experience in your communication with a healthcare professional.
  - Compassionate
  - Good listener.
  - Motivated.
  - Passion for the field and for patients.
- Answer the question that was asked.



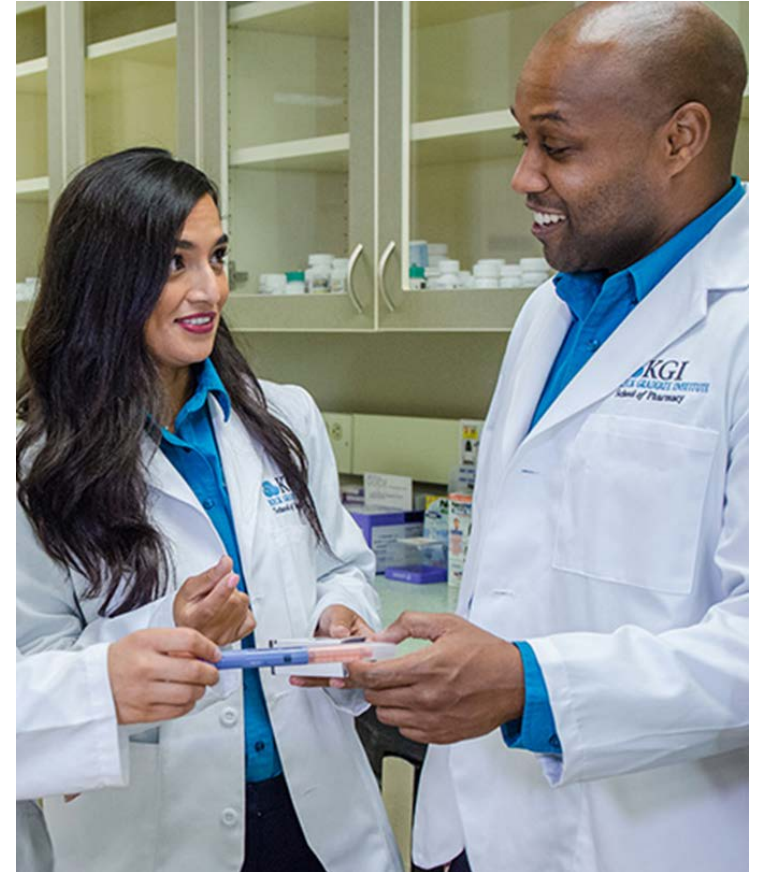
# KGI PharmD - How to Apply



[www.pharmcas.org](http://www.pharmcas.org)

# KGI PharmD – Important Updates

- Remember **key features** of KGI PharmD Program:
  - Graduates earn a **Certificate plus a PharmD**
  - Increased focus on topics critical to the future of pharmacy, **including pharmacogenomics**
  - Enhanced exposure to the biotechnology industry
- **Interviews** have already begun for the **Fall 2018** class.
- Applicants are encouraged to **apply early** for priority consideration for scholarships.
- The **deposit structure** is now easier for PharmD applicants:
  - \$250 Initial Deposit
  - Remaining \$750 due by March 15
- **For more information** on the PharmD program, see [http://www.kgi.edu/pharmacy/admissions/doctor-of-pharmacy-\(pharmd\)](http://www.kgi.edu/pharmacy/admissions/doctor-of-pharmacy-(pharmd)).



## Why is studying Genetics Important?

- Determine ways to better predict disease.
- Improve the welfare of humanity and relieve suffering<sup>1</sup>.



1 - <http://www.pharmacist.com/oath-pharmacist>



# Two KGI Genetics Pathways

KGI Master of Science in  
Human Genetics and Genetic  
Counseling (MSGC)

KGI Master of Science in  
Human Genetics and Genomic  
Data Analytics (MSGDA)



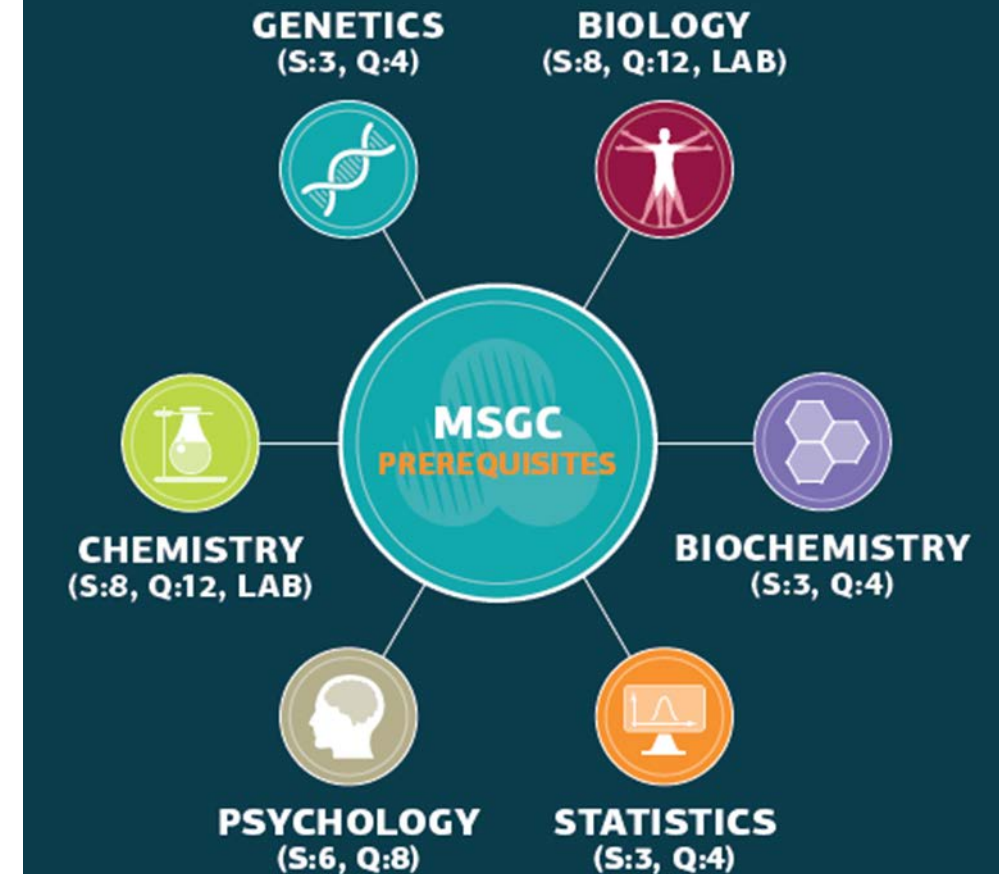
- What do Genetic Counselors do?
  - Genetic Counselors **provide risk assessment, education, and support to** individuals and families with or at risk **for inherited conditions.**
  - As the genetics experts within the healthcare team, Genetic Counselors have the opportunity to work in a **variety of specialties** such as **prenatal, pediatric, adult disease, cancer, industry/lab, and specialty clinic.**
  - **Employment settings** for Genetic Counselors include hospitals and medical centers, community settings, academia, and the biotechnology industry.
  - Due to the significantly increased understanding of genetics and how this impacts health, Genetic Counseling is a **rapidly growing field**, with an estimated 29% growth rate expected by 2024.



- Where are the KGI Genetic Counseling Clinical Rotations?



- Bachelor's Degree from a regionally accredited university
- B or better in each prerequisite
- 3.0 undergrad GPA
- GRE within 5 years
- Current CV
- Personal Statement
- 3 Letters of Recommendation (at least 1 from an academic)
- Check out KGI's webpage to see how *you* can gain exposure to the Genetic Counseling field



- What do Genomic Data Analysts do?

- Determine what variant causes a disease
- Problem solvers
- Organize and analyze data
- Interpret data and present it to stakeholders
- Provide knowledge to help develop new drugs based on evidence
- Also often referred to a [Clinical Variant Curators](#)



job title, keywords or company

[↑ Upload your resume](#) - Let employers find you

Jobs 1 to 10 of 209

Show: **all jobs** - 32 new jobs

### Statistical Genetics Analyst

Regeneron - ★★★★★ 84 reviews - Tarrytown, NY

The RGC hosts a vast amount of data encompassing thousands of phenotypes derived from electronic medical records, integrated with genomic data....

Sponsored - [save job](#)

### Bioinformatics Analyst

Ancestry - ★★★★★ 47 reviews - San Francisco, CA

The candidate must have experience working with genomic data and building genomic and bioinformatics pipelines....

Sponsored - [save job](#)

- Exploring Genomic Data Analytics Job Descriptions



## Bioinformatics Analyst

San Francisco, CA • Full-time

### Job Description

AncestryDNA is seeking a motivated and talented Bioinformatics Analyst to help us optimize and maintain the genomic analysis pipelines and data sets used by the genomics R&D team at AncestryDNA. The successful candidate will work with our team of biologists, population geneticists, statisticians, computer scientists and epidemiologists to design and implement genomic and bioinformatics pipelines for scalability and to take advantage of distributed computing environments in a local cluster and in the AWS.



**FRED HUTCH**  
CURES START HERE™

CAREERS

[Diseases / Research](#)

[Treatment / Support](#)

[About Us](#)

[Labs](#)

[CAREERS START HERE: LEARN MORE >](#)

## Data Analyst SCHARP, Clinical Data

<b>Job ID</b>	8767	<b>Type</b>	Regular Full-Time
<b>Company</b>	Fred Hutchinson Cancer Research Center	<b>Location</b>	US-WA-Seattle
<b>Category</b>	Clinical Research Support Services		

### More information about this job

#### Overview

The Statistical Center for HIV/AIDS Research and Prevention (SCHARP) at Fred Hutch is seeking a Data Analyst to provide data curation, integration, and analysis support for multiple clinical and laboratory data pipelines. The Data Analyst will use their data management expertise to optimize and document data design, database architecture, metadata and repository creation, data pipelines, data storage, and data models, and to curate and annotate data using open standards (e.g., CDISC).

- Bachelor's Degree from a regionally accredited university
- C or better in each prerequisite
- Current CV
- Personal Statement
- 3 Letters of Recommendation
- Check out KGI's webpage to *learn more* about Genomic Data Analytics



# Genetics at KGI – What Will You Study?

## Genetics at KGI - Year 1

**Common Courses such as:** Genetic Disease Mechanisms, Human Genomics, and Clinical Cancer Genetics

**Genetic Counseling Students Specialize in courses such as:**

- Human Embryology and Prenatal Diagnostics
- Medical Communication, **Counseling Theory and Skills**

**Genomic Data Analytics Students Specialize in courses such as:**

- **Human Genomics Lab**
- Biomedical Data Systems and **Informatics**
- **Clinical Trial Design**

## Genetics at KGI - Summer

**Genetic Counseling Summer:**

- Genetic Counseling Fieldwork

**Genomic Data Analytics Summer:**

- Experience in human genomic data analysis in industry or clinical laboratory settings

## Genetics at KGI - Year 2

**Genetic Counseling Year 2 includes courses/activities such as:**

- **Psychosocial** and Professional Development
- Genetic Counseling **Fieldwork**
- Research **Thesis**

**Genomic Data Analytics Year 2 includes courses/activities such as:**

- **DNA Sequencing and Variant Analysis**
- Genomic **Knowledge Translation**
- **Capstone**

See webpage and brochure for full list of courses



# Why Pursue Graduate Study in Genetics at KGI ?

- Be part of the *first* Genetic Counseling Program in School of Pharmacy and a premier Analytics program at the *forefront of next generation sequencing* technology.
- Benefit from *School of Pharmacy expertise* in pharmacogenomics, precision, and personalized medicine.
- Capitalize on KGI's *focus on Professional Development* and Networking.
- *Combine your passion* with the ability to help patients in an exploding healthcare field.
- Develop *cutting-edge skills* that make you *stand out*.



## Welcome to PharmGrad

The 2016-2017 PharmGrad cycle is now closed. You may log in to your 2016-2017 PharmGrad application in order to add or update information, but you will not be able to delete. You also cannot submit your 2016-2017 PharmGrad application to any new programs.

The 2017-2018 PharmGrad application cycle will open on September 20, 2017.

Sign in with your username and password below. First time here? Select Create an Account to get started.

Sign In

[Forgot your username or password?](#)

## GENETIC COUNSELING

- **Application Deadline:** February 1, 2018
- Applications will be accepted through the application deadline. After the application deadline, those selected for an interview will be contacted in February/March.
- KGI is participating in the Genetic Counseling Admissions Match. **All Genetic Counseling applicants should register online to participate in the 2018 Match** via the GC Admissions Match web site: <https://natmatch.com/gcadmissions>.

## GENOMIC DATA ANALYTICS

- **Application Deadline:** February 1, 2018
- Applications will be reviewed on a rolling basis. Interviews will take place starting in December as well as into the Spring.

What is the BEST way to learn more?

# Attend a KGI Visitation Day!

KGI offers visit days that are **open to prospective students, families, advisors, *and* instructors.** Visit our website to **view upcoming dates and register** for visitation days.

[www.kgi.edu/admissions/visit-kgi/visitation-days](http://www.kgi.edu/admissions/visit-kgi/visitation-days)



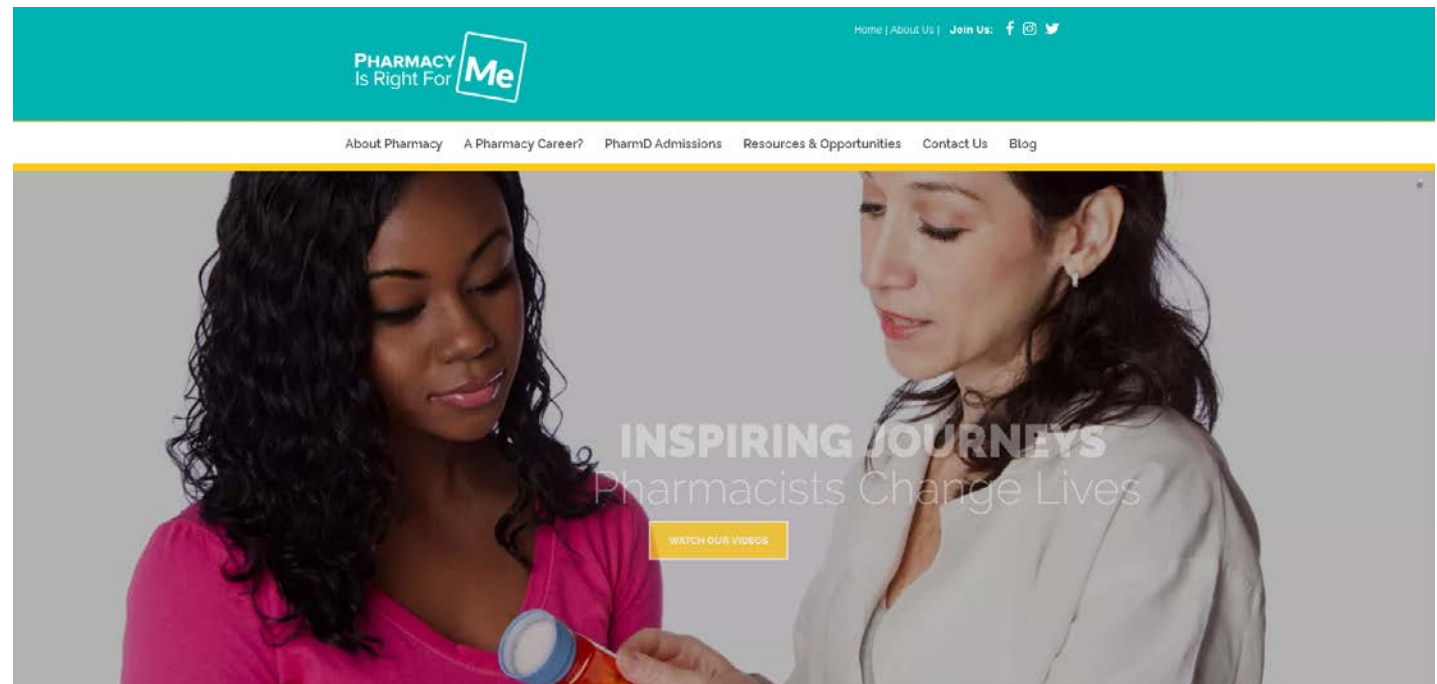
Visit [pharmacyforme.org](http://pharmacyforme.org) to learn more about the profession of pharmacy.



## IS PHARMACY RIGHT FOR YOU? ASK YOURSELF:

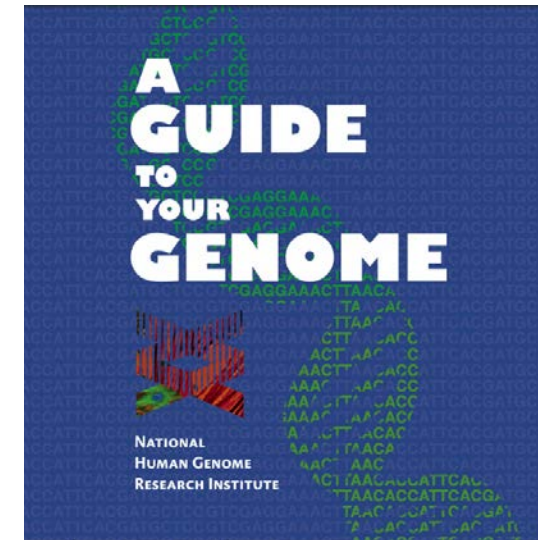
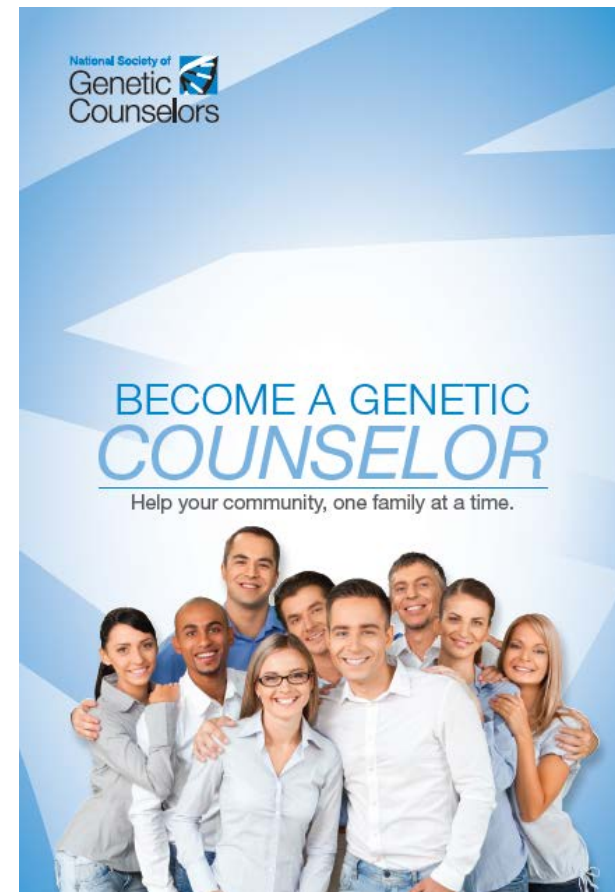
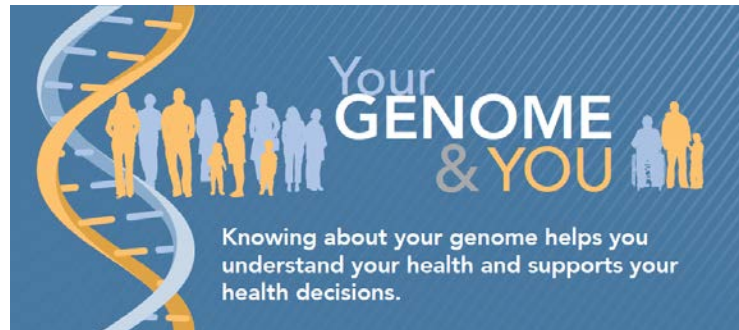
- ▶ Do you want to serve the community and improve people's health?
- ▶ Do you have strong communications skills?
- ▶ Do you like science and math?
- ▶ Are you detail-oriented and organized?
- ▶ Do you enjoy problem-solving?

If the answer is "yes" to one or more of these questions, then pharmacy may be right for you!



# Supplementary Materials - Genetics

Supplementary materials help spread awareness about Genetic Counseling and Genomic Data Analytics.



National DNA Day commemorates the completion of the Human Genome Project in April 2003 and the discovery of the double helix of DNA in 1953. Next year's DNA Day will be on **Wednesday, April 25, 2018**. We encouraged teachers and students around the world to celebrate by participating in the American Society of Human Genetics' (ASHG) 13th Annual DNA Day Essay Contest!

This contest is open to students in grades 9-12 worldwide and asks students to examine, question, and reflect on important concepts in genetics. Essays are expected to be well-reasoned arguments indicative of a depth of understanding of the concepts related to the essay question. They are evaluated by ASHG members through three rounds of scoring.

If you have any questions, email [DNA Day](mailto:DNA Day).

Sources:  
[www.genome.gov](http://www.genome.gov)  
[www.nsgc.org](http://www.nsgc.org)  
[www.ashg.org](http://www.ashg.org)



## Stay in touch!

**Facebook** @KeckGraduateInstitute

**Instagram** @KeckGrad

**LinkedIn** @ KeckGraduateInstitute

**Twitter** @KeckGrad

**YouTube** @KeckGrad

**KGI Pharmacy Admissions**

pharmacy.admissions@kgi.edu

909.607.9145

[www.kgi.edu/pharmacy](http://www.kgi.edu/pharmacy)





# Discussion

What can we as professional schools do to further open doors for your students?



Thank You

A silhouette of a person carrying a surfboard on a beach at sunset. The person is walking from left to right, carrying a large white surfboard under their arm. The background is a bright orange and yellow sunset over the ocean, with waves visible in the distance. The scene is captured in a warm, golden light.

# Department of Physical Therapy

College of Health and Human Services  
California State University, Long Beach



CALIFORNIA STATE UNIVERSITY  
**LONG BEACH**



*Best of the West*



CSULB

*The  
Beach*

# What does it take to become a Physical Therapist?

- Must obtain a Doctorate of Physical Therapy degree
- 3 years of academic coursework
  - includes: Anatomy, Physiology, Pathology, Biomechanics, Gait Analysis, Orthopedics, Neurology, Cardiopulmonary, Women Health, Pediatrics, Geriatrics, Professional and **Business Ethics...etc.**
- Doctoral Research Project\*
- Clinical Internships
  - \*CSULB requirement



# Admission Criteria

- Must have completed your undergraduate degree by the Fall semester of the year you are applying
- Completion of all prerequisite courses by the end of the Fall semester of the year applying
- No more than two prerequisite courses should be in progress during that fall semester



# Application information

A silhouette of a person holding a surfboard on a beach at sunset. The person is standing on the left, holding the surfboard vertically. The background shows the ocean and a bright sun low on the horizon, creating a warm, golden glow. The sky is a mix of orange and yellow, and the water reflects the light. The overall mood is serene and aspirational.

- **Bachelor's degree**
  - **GPA**
- **Prerequisite courses**
  - **GPA**
- **GRE scores**
  - **Recommendations**
- **Experience hours**
- **Letters of recommendation**
- **Personal essay**

# Bachelor's degree

- From an accredited institution
- Major does not matter
  - Most of the students admitted to the program
    - Kinesiology
    - Exercise Science
    - Biology
- As long as you have:
  1. Completed the degree
  2. Required overall GPA is  $\geq 3.00$ 
    - PTCAS will calculate the GPA's based on official transcripts submitted to them
    - PTCAS averages all coursework (including repeats) for overall GPA



# Prerequisite Courses \*\*\*\*\*

- General Biology 2 semester/3 quarter
- Human Anatomy & Physiology 2 semester/3 quarter
- General Chemistry 2 semester/3 quarter
- General Physics 2 semester/3 quarter
- Statistics 1 semester/1 quarter
- Psychology 1 semester/1 quarter

# Prerequisite Courses at CSULB

<b>CSULB Course</b>	<b>Description</b>	<b>Semester Units</b>
Biology 208	Anatomy	4
Biology 211 & 212	General Biology I & II	4,4
Biology 213 or 207	General Biology III or human Physiology	4,4
Biology 260	Biostatistics	3
Chem 111 A& B	General Chemistry	5,5
Physics 100 A & B	General Physics	4,4
Psy 100	General Psychology	3

# Prerequisite Courses \*\*\*\*\*

- **All biology, chemistry and physics courses must have a lab section**
- **Biology & Chemistry sequence must be for science majors, allied health majors, etc.**
  - **Microbiology may substitute for the second biology course**
  - **Organic chemistry or biochemistry may substitute for the second chemistry course**
- **Abnormal psychology may substitute for general psychology**
- **Anatomy and physiology must have been completed within 5 years prior to application**
  - **All other prerequisite courses must have been taken within 10 years of applying**

# What if I'm not taking the prerequisite courses at CSULB?

- **Accredited Institution**
- **Course Description**
  - Be sure to check the catalog to compare course description
  - Inclusion of lab
- **Science courses for Bio, science, allied health majors**
- **Statistics**
  - Scientifically based, usually offered in Math, Psych or Bio dept's.
- **Use *assist.org* if courses taken at a community college**
  - We do accept prerequisite courses taken at a community college

# Prerequisite courses

- **Required prerequisite GPA is  $\geq 3.00$** 
  - **CSULB will calculate your prerequisite GPA based upon official transcripts submitted to PTCAS**
  - **In the case of a course being retaken, we will take the higher of the two grades when determining your prerequisite GPA**
- **All prerequisite courses must be completed by the end of the fall semester of the year you are applying**
  - **PTCAS will have an open window in which to submit your transcripts in December**
  - **Courses not verified by PTCAS will not be considered when assessing the application**
  - **We do NOT accept applicants who have prerequisite courses in progress in the Spring**

# GRE

- **Required**
- **Taken within the last 5 years**
- **GRE scores reported by test date not section**
  - all three sections of one test date will be used
  - you can't use sections from different test date
- **Recommended:**
  - At least **4.0** in the Analytical section
  - At least **150** in Verbal and Quantitative sections
- **You may take the GRE as many times as you would like**
  - It is recommended that you take the GRE no later than one month prior to the PTCAS deadline in order to allow for processing and verification of your scores

# Experience Hours

- Minimum of **100** hours
- **DIVERSE** settings
  - OP clinic
    - Specialized setting
  - Acute care setting
  - Acute Rehab setting
  - Skilled Nursing Facility
  - Sports team
    - PT



# Experience Hours

- **Hours**

- **You can earn more credit based upon the total number of verified hours listed on the PTCAS application**
  - **A minimum of 100 hours is required but the applicant can receive credit for up to 400 hours**

- **Sites**

- **You can earn more credit based upon the total number of sites listed on the PTCAS application**
- **A minimum of 1 site is required but the applicant can receive credit for up to 4 sites**

- **Having more than 400 hours and/or 4 sites will not negatively affect the applicant's score**



# Letters of Recommendation

- **Ideally:**
  - **One from an instructor (prerequisite course)**
  - **One from a licensed PT who has observed your work**
  - **One from an employer**
    - **Can be from a second PT or academic source if no employer available**
- **Should include/discuss the following:**
  - **Character**
  - **Communication skills**
  - **Background**
- **Get letters of recommendation from those that know you well**
  - **A highly recognized professor who doesn't know you (and has his grad assistant write the letter for you) won't help**
  - **Find someone who knows you and you've interacted with**

A person is silhouetted against a bright sunset over the ocean, carrying a large surfboard under their arm. The scene is peaceful and evokes a sense of personal passion and achievement.

# Personal Essay

## **Your chance to paint a picture of yourself**

- **Why are you interested in this profession**
- **Why do you want to put yourself through 3 years of graduate school**
- **Give a good overall impression of yourself**
  - **It lets the reviewer get an idea of who you are**

# Summary of Admission Criteria \*\*\*\*\*

- ✓ Bachelor's Degree
- ✓ Overall GPA  $\geq$  **3.0**
- ✓ Completed prerequisite courses with  $\geq$  **3.0** GPA
- ✓ GRE within last 5 years
- ✓ Experience hours (**minimum 100 hours**)
- ✓ Three recommendation letters
- ✓ Personal essay
- ✓ Complete application to the Department **AND** to CSULB

A person is silhouetted against a bright sunset, carrying a large white surfboard under their arm. The sun is low on the horizon, creating a strong orange and yellow glow that reflects on the water and the wet sand of the beach. The person's legs and the surfboard are the primary dark shapes in the foreground.

**TIME TO APPLY**

# The Application Process \*\*\*\*\*

**Apply to the PT Dept.  
through**

**PTCAS**

*[ptcas.org](http://ptcas.org)*

**June 30<sup>th</sup> to  
November 1<sup>st</sup>**

**Apply to CSULB  
through**

**Cal State Apply**

*[Calstate.edu/apply](http://Calstate.edu/apply)*

**October 1<sup>st</sup> to  
January 15<sup>th</sup>**

**START EARLY**

# Important Dates and Information

- It is the **Applicant's responsibility** to be sure that **ALL** material is submitted to PTCAS in time
  - Transcripts, GRE scores, experience hours, letters of recommendation, personal essay
  - **START EARLY**
- Incomplete applications **WILL NOT** be considered.
- Early Decision: August 15
- January 2017: Students are Notified of Acceptance into the Program
  - An alternate list is generated & applicants are notified of which tier they are on

A person is silhouetted against a bright sunset over the ocean, carrying a large white surfboard. The sun is low on the horizon, creating a strong orange and yellow glow that reflects on the water and the wet sand of the beach. The person's legs and the surfboard are the primary focus in the foreground, with the ocean and sky in the background.

**SO WHAT CAN I DO TO HELP INCREASE MY CHANCES  
OF GETTING ACCEPTED?**

# Improving your chances \*\*\*\*\*

- **Get good grades**
  - Overall and prerequisite GPA's of at least 3.5 to be competitive
- **Get experience from different settings**
  - Doesn't have to be 100 hours in each setting but you'll need  $\geq 100$  hours total
- **Get letters of recommendation from those that know you**
  - Find someone who knows you well and you've interacted with
- **Personal essay**
  - Give some insight to yourself and why you want to do this



# Class of 2020

**>1300 applied**

**39 students  
admitted**



A person is silhouetted against a bright sunset over the ocean, holding a large white surfboard. The sun is low on the horizon, creating a strong orange and yellow glow that reflects on the water and the wet sand of the beach. The person's legs and the surfboard are in the foreground, while the ocean waves are visible in the background.

# CSULB DPT PROGRAM

# DPT Curricular Sequence

CSULB DPT Curricular Sequence					
<b>Summer Session I, Year 1</b>		<b>Units</b>	<b>Summer Session III, Year 1</b>		<b>Units</b>
DPT 701a	Anatomy I	2	DPT 701b	Anatomy II	2
DPT 704	Tissue Mechanics	2	DPT 703	Neuroanatomy	3
DPT 720	Prof Interactions	3			
		<b>7</b>			<b>5</b>
<b>Fall, Year 1</b>			<b>Spring, Year 1</b>		
DPT 705	Biomech Principles	3	DPT 709	Ex Science	3
DPT 706	Physiology	6	DPT 710	Pathology	3
DPT 707	Lifespan	2	DPT 735	Gait	2
DPT 701c	anatomy III	2	DPT 732	MS exam	3
DPT 721	Prof Practice issues	2	DPT 740	Neuro Exam	2
DPT 708	Motor control/Irng	2	DPT 731	Acute care principle	2
		<b>17</b>			<b>15</b>
<b>Summer Session I, Year 2</b>			<b>Summer Session III, Year 2</b>		
DPT 750	Imaging	2	DPT 722	Critical Thinking	1
DPT 765	Mgmt Integ	2	DPT 781	ICE	2
DPT 796	Research Methods	2	DPT 780a	Ortho practice I	1
DPT 751	Pharmacology	2	DPT 752	Diff Dx	2
		<b>8</b>			<b>6</b>
<b>Fall, Year 2</b>			<b>Spring, Year 2</b>		
DPT 733	MS Interventions	4	DPT 734	Advance mgmt MS	2
DPT 741	Neuro Intervent I	3	DPT 736	Prosthetics & Ortho	2
DPT 743	ENMG I: peripheral	2	DPT 744	ENMG II: central	2
DPT 760	Mgmt CardoPulm	3	DPT 745	Mgmt Peds	3
DPT 770	Health Care Deliver	2	DPT 767	Mgmt Geri	2
DPT 782	Neuro practice I	1	DPT 771	Health Care Del II	2
DPT 797	Doctoral Project	1	DPT 783	Neuro practice II	1
			DPT 797	Doctoral Project	2
		<b>16</b>			<b>16</b>
<b>Summer Session 2, Year 3</b>					
DPT 784	12 wk clin internshi	6			
		<b>6</b>			
<b>Fall, Year 3</b>			<b>Spring, Year 3</b>		
<b>Fall: First 10 weeks</b>					
DPT 742	Advanced Mgmt NN	2	DPT 786	12 wk clin internshi	6
DPT 737	Sports PT	2			<b>6</b>
DPT 768	Pathophysiology	3			
DPT 769	Advanced Mgmt CP	1			
DPT 797	Doctoral project	1			
DPT 780b	Ortho practice II	1			
<b>Fall: last 5 weeks/Winter</b>					
DPT 785	12 wk clin internshi	6	<b>Graduate spring. Total units:</b>		<b>118</b>
		<b>16</b>			

# CSULB's DPT Faculty

- 9 full-time faculty
- 18 part-time faculty
- 2 full-time Department coordinators



A silhouette of a person holding a surfboard on a beach at sunset. The person is standing on the left, holding the surfboard vertically. The sun is low on the horizon, creating a bright orange and yellow glow. The ocean waves are visible in the background.

# DPT at CSULB

**Great reputation**

**PhD and DPT prepared faculty**

**Emphasis on teaching**

**Small class size**

**Many hands-on opportunities**

**Cost**

# Hands on experiences

## Internships:

- **Three 12 week clinical internships**
- **Clinical Courses**
- **The Pro Bono clinic**
- **PT@the Beach**
- **Research Project**



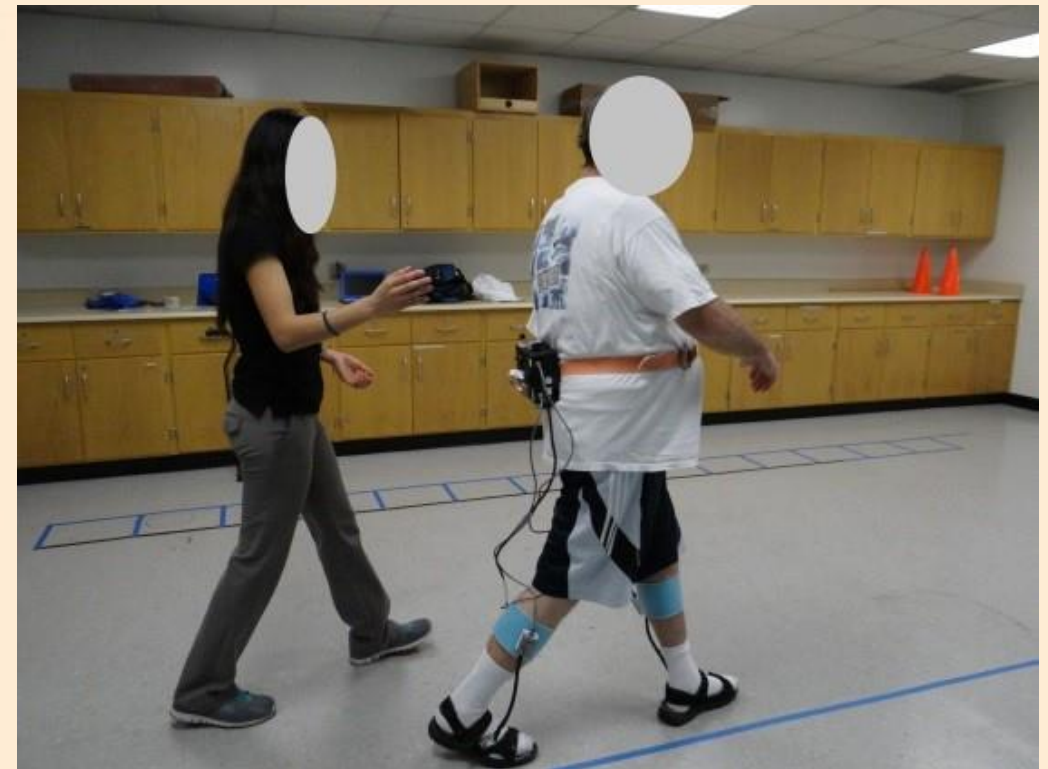
A person is silhouetted against a bright sunset, carrying a large white surfboard under their arm. The sun is low on the horizon, reflecting on the water and sand. The scene is warm and golden.

**DOCTORAL RESEARCH PROJECT**

# Pathokinesiology Lab

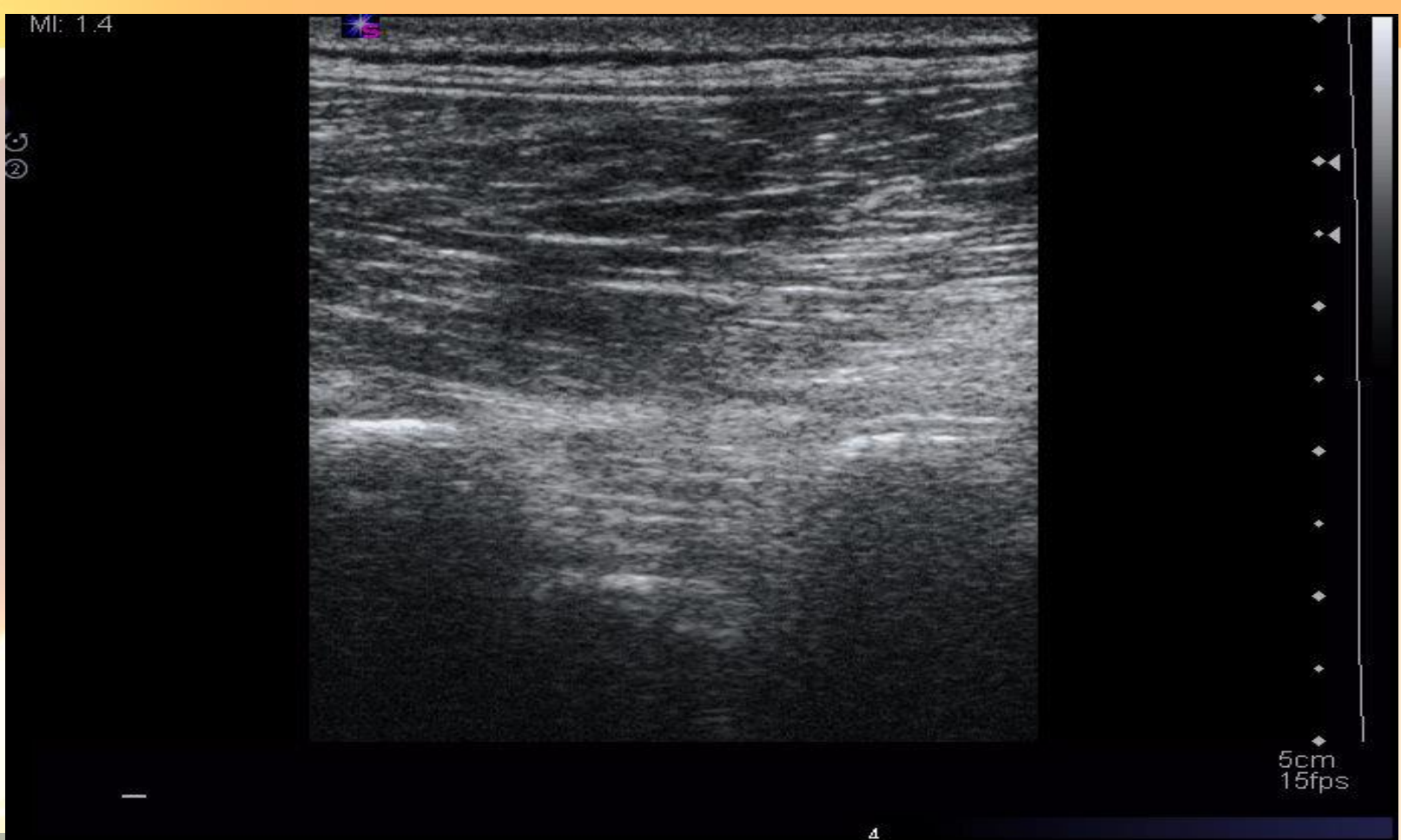


# Clinical Rehabilitation and Biomechanics (CRAB) Laboratory





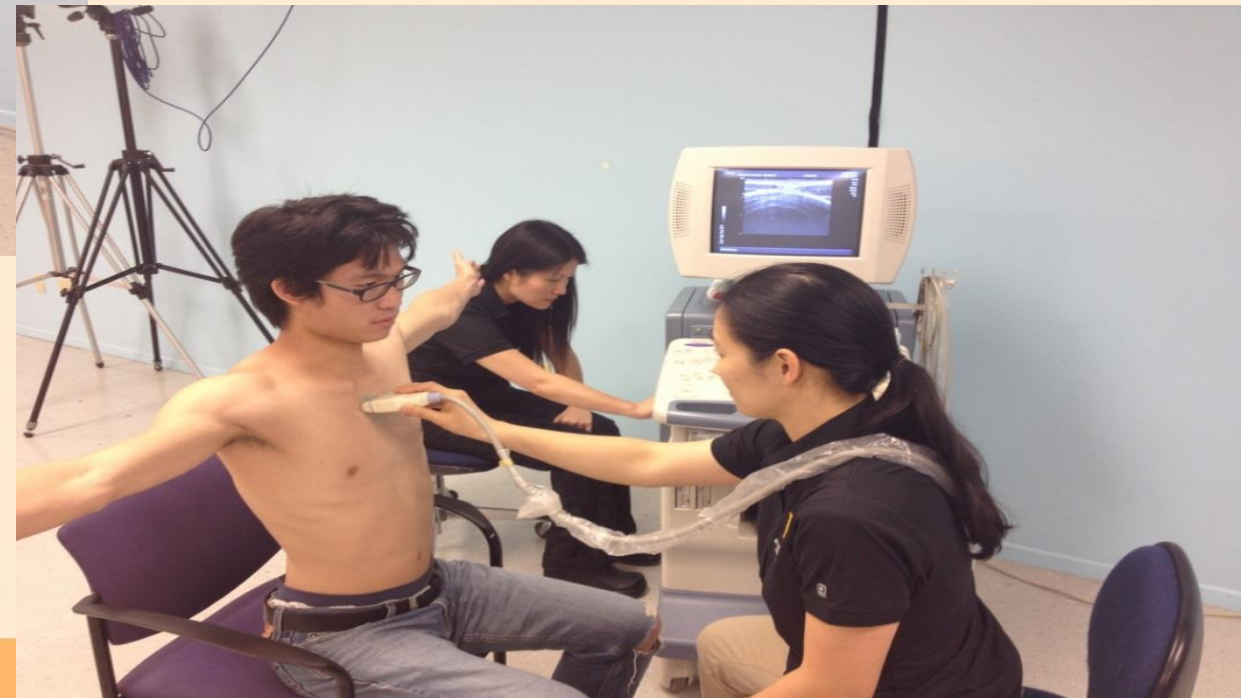
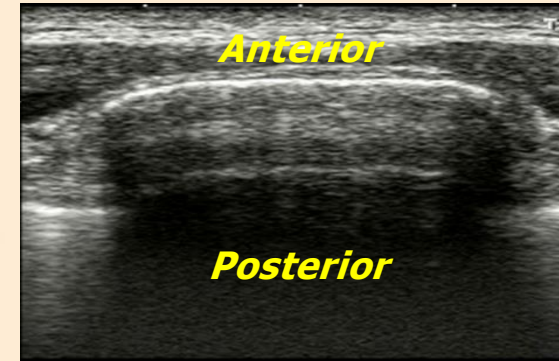
# Back muscle contraction during various activities



# Gait and Fall Prevention Lab



# Sternal Separation



# Working while in PT school

## To be honest, it's very difficult

- Just for example the first full year (Fall and Spring semesters) you will take 15 and 17 units
  - about 21 to 26 hours per week in class
  - doesn't include study time
  - doesn't include group study/project time
  - doesn't include free time/relaxation
  - doesn't include sleep time
- We don't encourage or recommend it



# DPT Tuition and Fees\*

**CSULB DPT program per semester: ~ \$ 9126**

**Per year: ~ \$ 27,378 (3 semesters per year)**

**Total Cost: ~ \$ 82,134 (3 years)**

## Compare to

**Loma Linda ~ \$ 105,500**

**Mount St Mary's ~\$ 120,286**

**Western University ~\$ 120,800**

**Azusa Pacific ~\$ 118,372**

**Chapman ~\$ 127,548**

**University of the Pacific ~\$ 148,914**

**USC ~ \$ 171,132**

**University of St. Augustine ~\$ 188,590**



**\* Approximate estimates for year 2017-18 per each universities web site**

A person is silhouetted against a bright sunset over the ocean, carrying a large surfboard under their arm. The sun is low on the horizon, creating a strong orange and yellow glow that reflects on the water and the wet sand of the beach. The person's legs and the surfboard are the primary dark shapes in the foreground.

**SO YOU MAKE IT THROUGH THE PROGRAM, NOW  
WHAT?**

# Graduation



# Take the Boards

## National Physical Therapy Examination (NPTE) Pass Rates

CSULB Cohort	CSULB 1 <sup>st</sup> time pass rate	National avg. for 1 <sup>st</sup> time pass rate	CSULB Ultimate pass rate (one or more attempts)
Class of 2014	100%	91%	100%
Class of 2015	100%	93%	100%
Class of 2016	100%	93%	100%
Class of 2017	97%	93%	100%*

## National Physical Therapist Licensure Exam

## Graduation and Employment Rate

Outcome	Class of 2014	Class of 2015	Class of 2016	Class of 2017
Graduation	94%	92%	93%	92%
Employment	100%	100%	100%	100%

\*Graduation Rate is the percentage of the students enrolled in the DPT Program who completed the program within 150% of the time normally expected for completion.

\*\*Employment Rate is the percentage of graduates employed as a Physical Therapist within 6 months after passing the licensure examination.



A person is silhouetted against a bright sunset, carrying a large white surfboard under their arm. The sun is low on the horizon, creating a strong orange and yellow glow that reflects on the wet sand and water. The person's legs and the surfboard are the primary subjects in the foreground.

**THANK YOU FOR YOUR TIME**

# Contact Information

**Jeff Rodrigues PT, DPT, CCS**  
**Graduate Advisor**  
**[jeff.rodriguez@csulb.edu](mailto:jeff.rodriguez@csulb.edu)**

**Michelle Ramirez**  
**Admissions and Clinical Education Coordinator**  
**[Michelle.Ramirez@csulb.edu](mailto:Michelle.Ramirez@csulb.edu)**

**Gloria Dacanay**  
**Department Coordinator**  
**[Gloria.Dacanay@csulb.edu](mailto:Gloria.Dacanay@csulb.edu)**



**Marshall B.**  
**KETCHUM UNIVERSITY**  
School of Physician Assistant Studies

# Pursuing the PA Profession

**Leslie Lim, MA**  
**Director of Admissions**  
**[lilim@ketchum.edu](mailto:lilim@ketchum.edu)**

**Sept 29, 2017**

# History of the PA profession

## History – 50 Years of Quality Healthcare

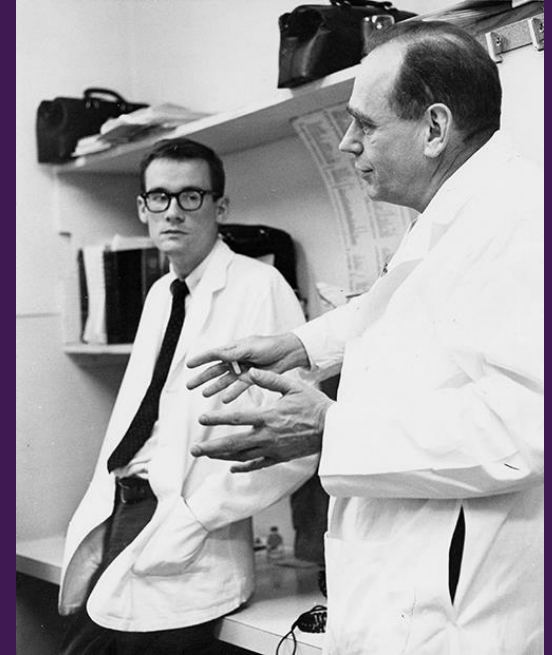


**1967**

- » Duke University
- » First graduating class:  
Three former Navy corpsmen

**2016**

- » Today, PAs practice  
in every medical specialty  
and clinical setting



# What is a PA?



**nationally certified** and **state licensed** to practice medicine as part of a physician-led team.

PAs are educated at the **graduate level (Master's)** and practice in nearly every **medical and surgical** specialty and setting.

# What can a PA do?

Diagnose

Treat

Prescribe

- Take medical histories
- Conduct physical exams
- Order and interpret diagnostic studies
- Develop treatment plans
- Write prescriptions (In most states)
- Counsel on preventive healthcare
- Assist in surgery
- Perform procedures
- Make rounds in nursing homes and hospitals
- Do clinical research

# To practice as a PA...



**PAN** **C** **E**

required to pass the **national certifying examination** administered by the National Commission on Certification of PAs.

Get licensed by the state they wish to practice

# PAs Deliver the Healthcare Patients Need, When and Where They Need It

## PAs Are Changing the Way We View and Receive Healthcare Today.

Some of the Benefits PAs Bring to the Healthcare System Are:



Increasing access to care, especially for patients in rural or underserved areas



Lowering healthcare costs for consumers and health systems



Increasing the quality and comprehensiveness of team-based healthcare



# PAAs are in demand

The role PAs play in expanding access to care while creating increased value for patients and hospitals is critical right now.

## The Power of the PA Profession

**+300%**

Demand for PAs increased more than 300 percent from 2011 to 2014.

**+30%**

Employment of PAs is projected to increase 30 percent between 2014 and 2024.

**+76%**

Multiple job offers are received by 76 percent of PAs upon certification.

**400,000,000 patient interactions**

- National healthcare search firm, Merritt Hawkins
- U.S. Bureau of Labor Statistics (U.S. Department of Labor, Occupational Outlook Handbook, 2012-2013 Edition, PAs)
- NCCPA 2015 Statistical Profile of Recently Certified PAs
- 2015 AAPA National Survey

© American Academy of PAs 2017



# A Growing Profession

## The PA Profession in News

### #1 Most Promising Job

Forbes, Young Invincibles, and Glassdoor PA ranking of becoming a PA in America 2015.

**Forbes**



YOUNG INVINCIBLES  
together, invincible

 glassdoor

### #5 Best Job

U.S. News & World Report PA ranking in America 2016 (up from #10). Ranked #4 in healthcare.

**U.S. News** & WORLD REPORT

### #7 Highest Paying Job

Glassdoor 2017 Highest Paying Jobs in America.

 glassdoor

© American Academy of PAs 2017

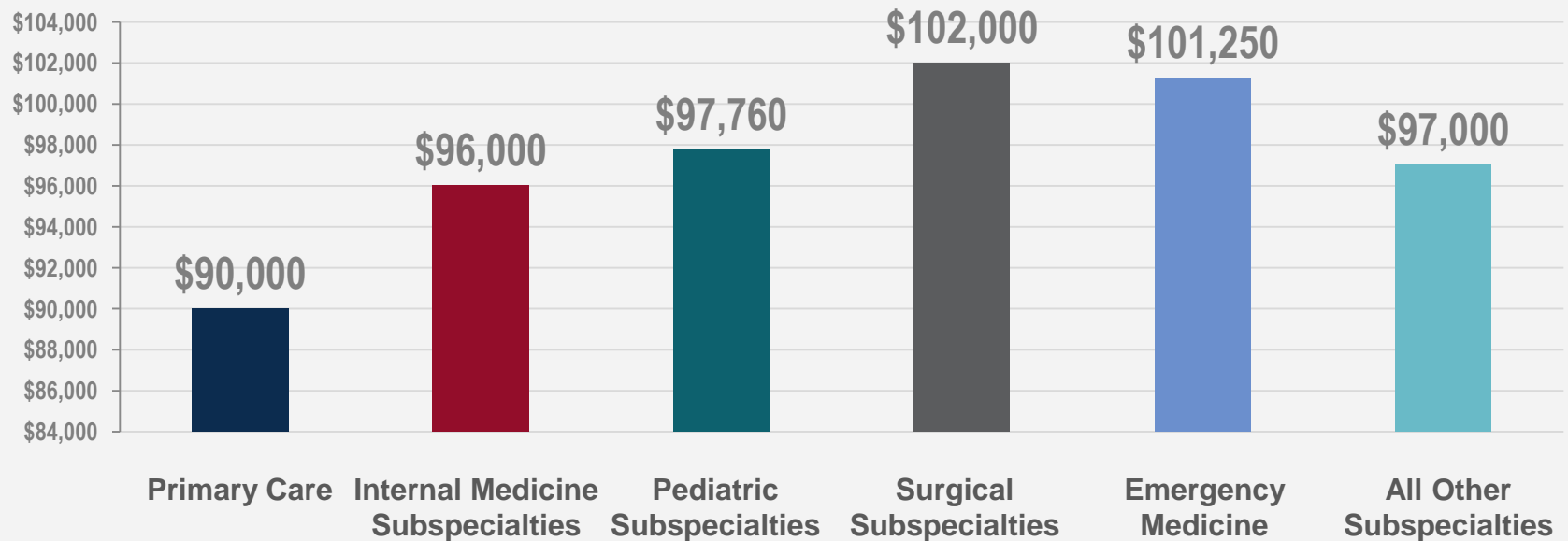


# Salary

First-year PAs in California earn a median salary of \$100,000 annually.

## All PAs: Base Salary by Specialty\*

### Median Base Salary



\*The data reflect clinically practicing PAs who worked 32 hours or more per week in 2015.

Source: 2016 AAPA Salary Report

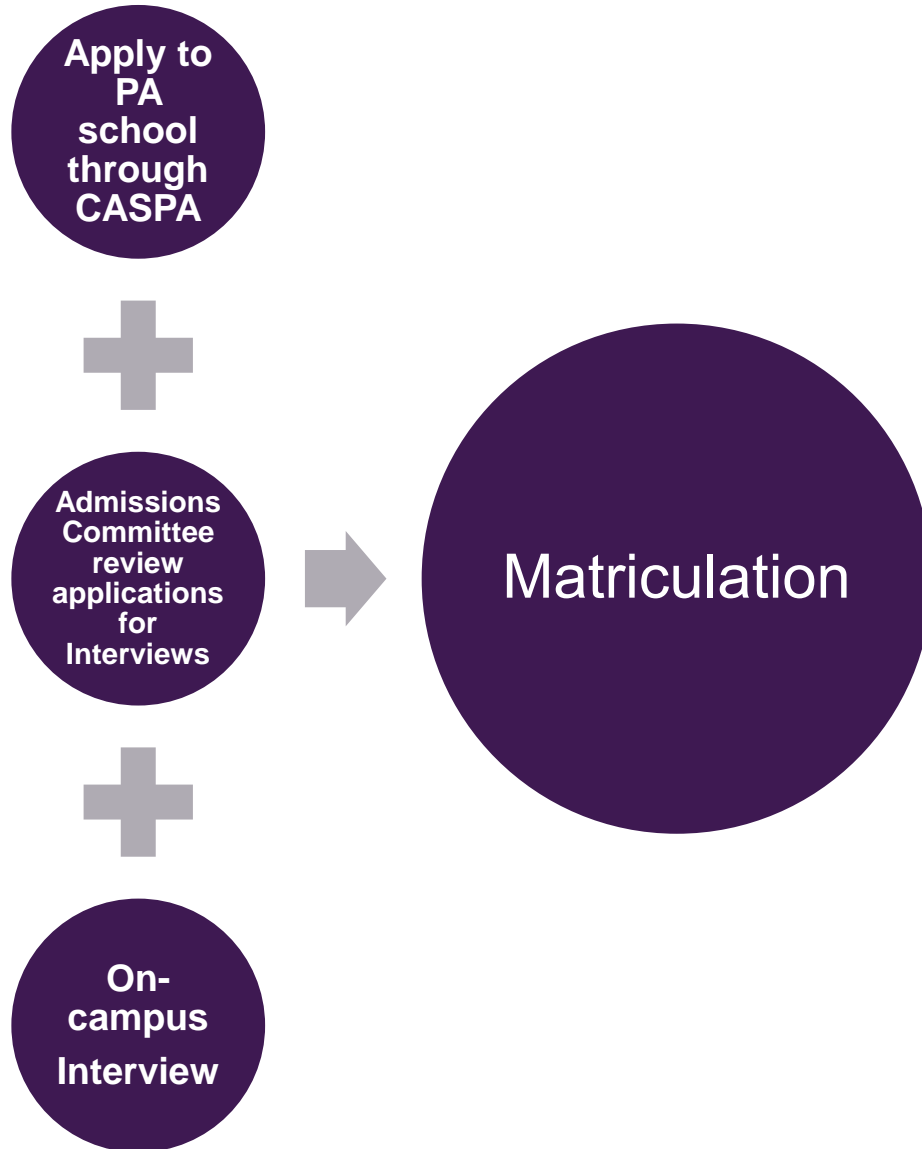
A photograph of a modern, multi-story building with a light-colored facade and large glass windows. A purple sign with white text is mounted on the upper part of the building. The sky is blue with wispy white clouds. A dark purple banner is overlaid across the middle of the image, containing the text 'Physician Assistant Programs' in white.

# Physician Assistant Programs

# To become a PA, must graduate from an accredited educational program

- **224 accredited** PA programs throughout the United States
- **14** PA schools in California
- Average **2-year** training and education
  - Full-time postgraduate study
  - Program include classroom instruction and clinical rotations
  - Coursework in applied medical sciences, behavioral sciences and clinical medicine
  - Rotations includes emphasis on primary care in ambulatory clinics, physicians offices and acute/long-term care facilities

# The Application Process



# Centralized Application Service (CAS)

CASPA™

## Welcome to CASPA

The Central Application Service for Physician Assistants. Cycle 15 - April 22, 2015 – March 1, 2016

CASPA is a service of the Physician Assistant Education Association (PAEA), the only organization representing physician assistant educational programs nationwide, and has been offered to applicants since 2001. The online application is designed to simplify the PA school application process.

As a respected healthcare provider, you will enjoy an exciting and fulfilling career as a PA. The physician assistant profession is one of the fastest growing healthcare professions nationwide and is ranked as the top Master's degree for jobs by For

Sign in with your username and password below. First time here? Select Create an Account to get started.

Username

Password

Sign In

Create an Account

## My Application

This dashboard is your application home providing access to each part of the application you need to complete and a high level overview of your progress.

My Program Selections

HAVE UPCOMING DEADLINES	READY TO SUBMIT
0	0

Manage My Programs

Latest Notifications

- Evaluation Request Submitted 03/02/2015 to Evaluator >
- CASPA application – Welcome! 10/13/2014 >

View My Notifications

### Personal Information



### Academic History



### Supporting Information



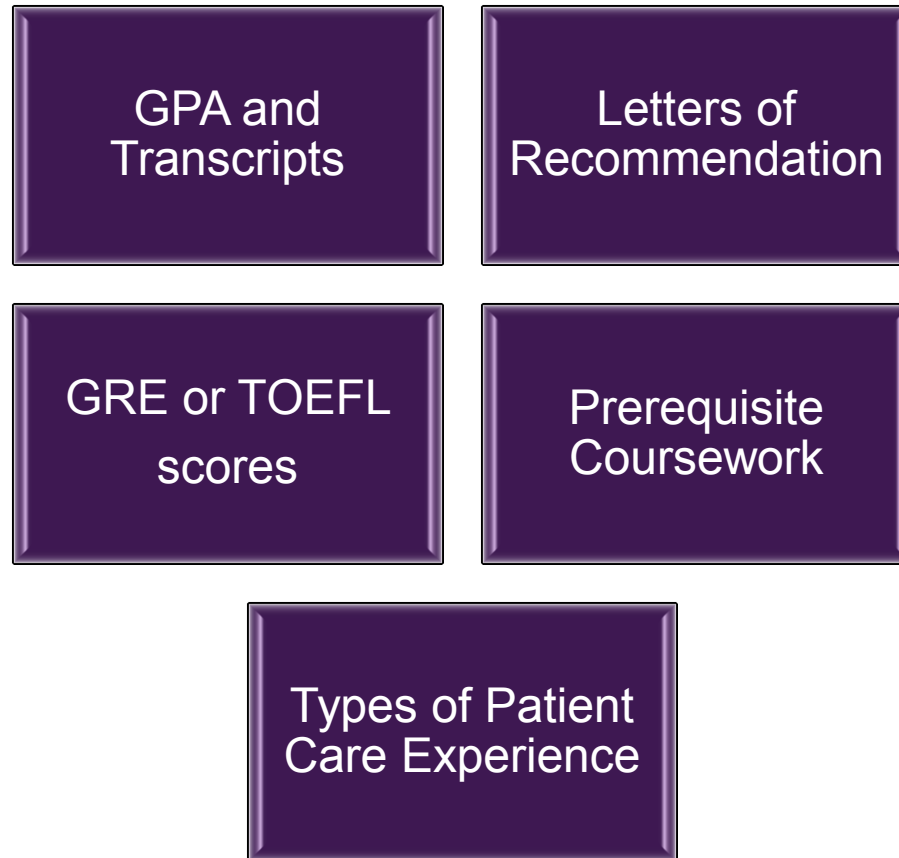
### Program Materials



- Most of the schools will accept applications through CASPA
- Complete one application and send one set of documents to all the PA programs
- Many program use the calculated CASPA GPA
- Application cycle opens in **April** each year
- Applications are submitted one year prior to the year a student plan to attend

# Requirements

will vary from each individual PA school:





# The majority of PA programs have the following prerequisites:

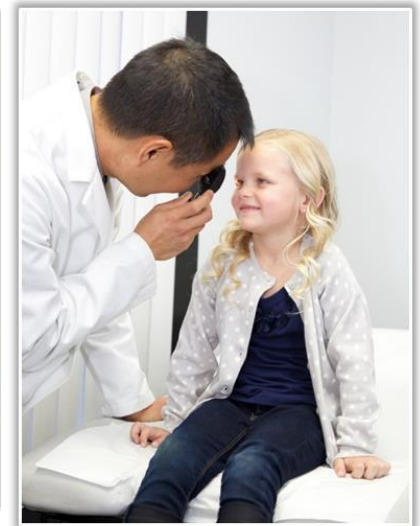
- **Chemistry**
- **Physiology**
- **Anatomy**
- **Microbiology**
- **Biology**

Course Title	Course Number	Units
Human Anatomy	BIOL 361	4
Integrated Human Anatomy and Physiology	BIOL 191A/191B	4+4
Human Physiology/Human Physiology Lab	BIOL 310/310L	3+1
Mammalian Physiology	BIOL 362	4
General Microbiology	BIOL 302	4
General Chemistry	CHEM 120A	5
Organic Chemistry	CHEM 301A and CHEM 301B	3+3
Introductory Psychology	PSCY 101	3
Intro to Probability and Statistics	MATH 338	3

*Complete at least two years of college coursework in basic and behavioral sciences before applying to a PA program, which is very similar to premedical studies.*

# What is considered healthcare experience? (not an exhaustive list)

- Medical assistant
- Emergency medical technician (EMT)
- Paramedic
- Medic or medical corpsman
- Peace Corps volunteer
- Lab assistant/phlebotomist
- Registered nurse
- Emergency room technician
- Surgical tech
- Certified nursing assistant (CNA)
- COPE Health Scholars



Most students have a bachelor's degree and about three years of healthcare experience before entering a program.

# What does it take to get into PA school?

## Minimum

- 3.0 Overall and Science GPA
- 1,000 hours of direct hands-on patient care experience
- Complete prerequisite coursework
- GRE scores
- Do well on Interview

## Average Competitive Applicant

- 3.4 or greater Overall and Science GPA
- 4,000 hours (2 years) of direct hands-on patient care experience
- Strong letters of recommendation
- Do extremely well on Interview

# Additional criteria taken into consideration

- Community/Volunteer service
- Extracurricular activities
- Leadership experience
- Strong Communication skills
- Teamwork skills
- Critical thinking skills

# What are some of the most common mistakes individuals make when applying?

1. Misdirected Personal Statement
2. Applying to CASPA at the last minute.
3. Not meeting the requirements for the program to which they are applying

# How you can advise your Pre-PA students

1. Get good grades in undergraduate courses
2. Enroll in courses in basic, behavioral and biological science  
*i.e. Organic Chemistry*
3. Take additional coursework to improve GPA

# Helpful Links

- PA Focus: [pafocus.org](http://pafocus.org)
- Central Application Service for Physician Assistants: [portal.caspaonline.org](http://portal.caspaonline.org)
- American Academy of PAs: [aapa.org](http://aapa.org)
- California Academy of PAs: [capanet.org](http://capanet.org)
- Physician Assistant Education Association: [paeaonline.org](http://paeaonline.org)
- National Commission on Certification of Physician Assistants: [nccpa.net](http://nccpa.net)

# Questions?



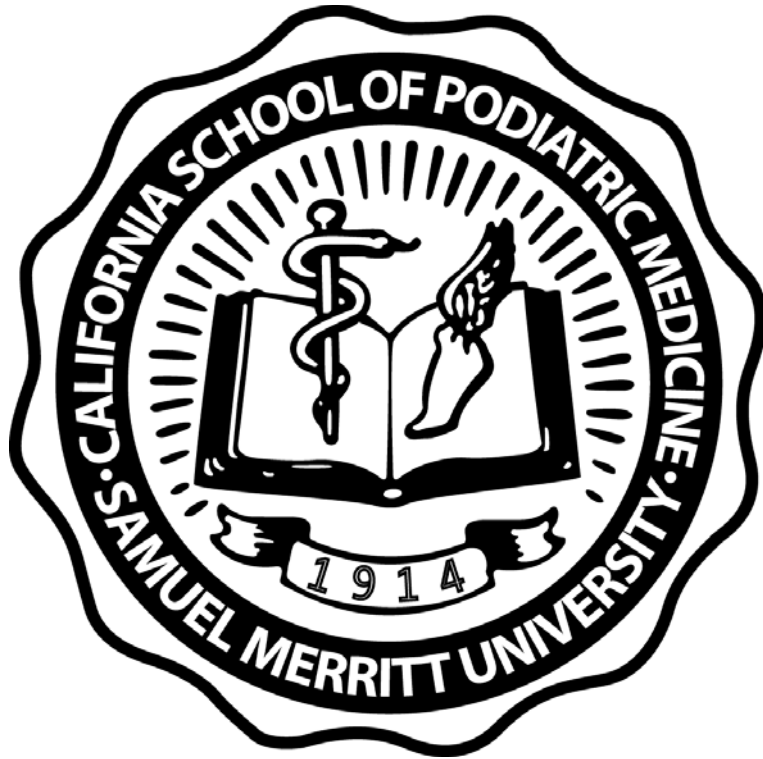


# Thank You!

**Leslie Lim, MA**

**[lilim@ketchum.edu](mailto:lilim@ketchum.edu)**

**(714) 992-7808**



# California School of Podiatric Medicine

David Tran DPM, MS  
Assistant Professor

Associate Director of Admission  
Director of Graduate Placement

 **SAMUEL MERRITT UNIVERSITY**

---

# Goals for Today

Brief Overview: Podiatry & CSPM

Pros and Cons of Podiatry

Day in the Life of a DPM

Q&A



# Podiatric Medicine and Surgery: What's It All About?

# How Do You Become a DPM?

Four Years of Podiatric Medical School

Complete Board Exams

Three Years of Residency

Obtain License to Practice

# 9 Schools Nationwide

- Arizona (AZPod)
- Barry (BUSPM)
- California School (CSPM)
- Des Moines (DMU-CPMS)
- Kent State (KSUCPM)
- New York (NYCPM)
- Scholl-Rosalind Franklin (SCPM)
- Temple (TUSPM)
- Western (WUCPM)
  
- <http://www.aacpm.org/colleges/>



# California School of Podiatric Medicine

# CSPM Strengths

Small class size (48)

Direct hands-on anatomy dissection (4/table)

Early 2<sup>nd</sup> year clinical exposure/small clinical rotation groups

Face-to-face clinical time with faculty



# CSPM Strengths

Diversity of patient population, ethnically and culturally

Highland Hospital—one of the busiest ER's in the nation

Nationally recognized Biomechanics program

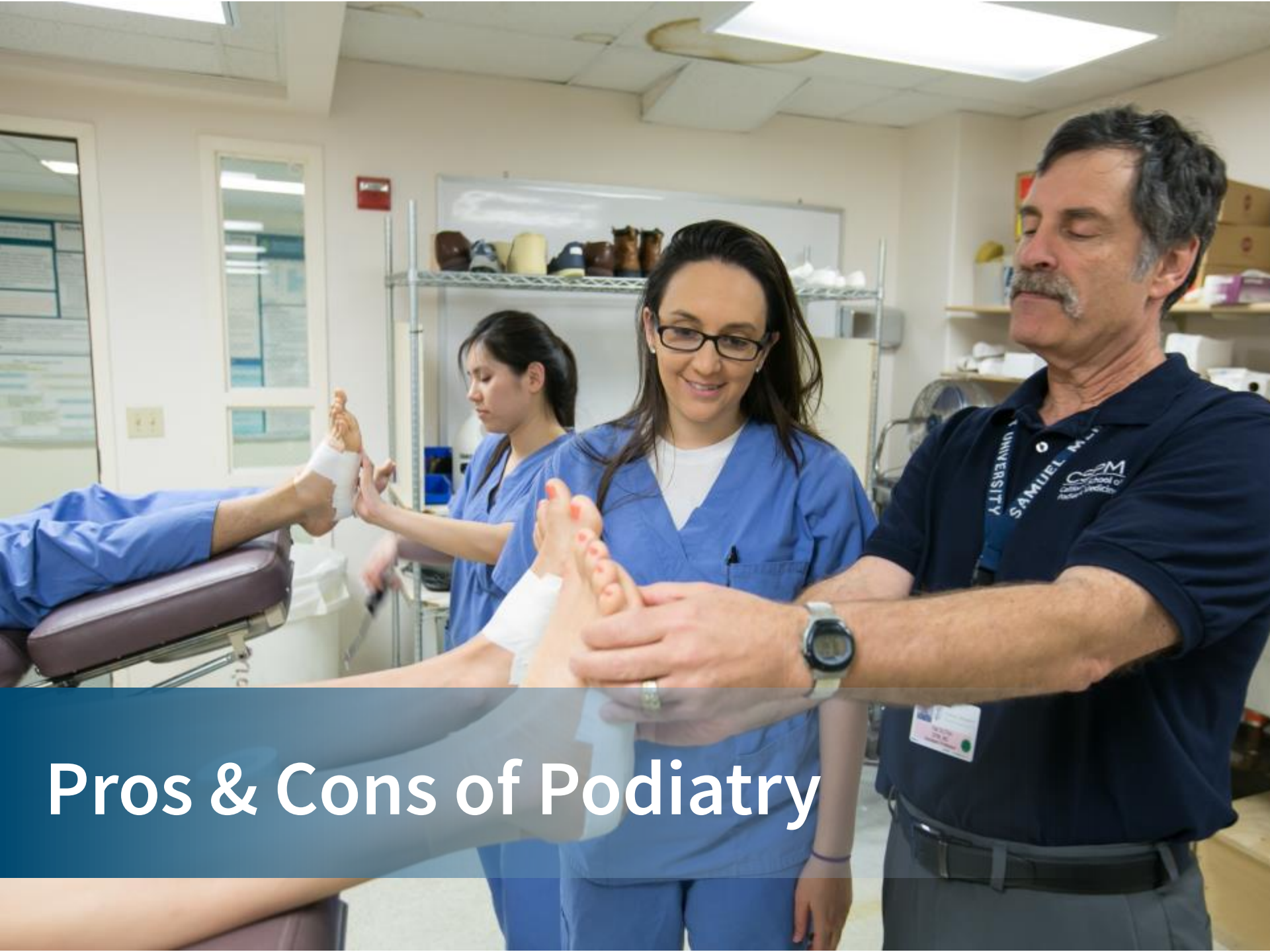
State of the art simulation learning

# Health Science Simulation Center



# Motion Analysis Research Center (MARC)





# Pros & Cons of Podiatry

# Pros

You will NEVER be out of a Job

Less competition academically (changing...)

Better chance for residency training of your choice

Better Schedule

Good Income

Less Stress

Your patient loves you and can't wait to see you

# Cons

People think you have a foot fetish...but who cares...

# Never Jobless

Profession always in demand

Shortage of practitioners

Currently < 19,000 DPMs Nationwide  
(18,100 --> 2015\*\* APMA)

Projected growth 2012 - 2022 →23%

Faster than average (BLS – 2015) → 14% faster  
than average

# Increasing DM Population

CDC 2014 report – 29.1M (25.8M in 2010)

8.1M undiagnosed (7M 2010)

86M pre-diabetics 2012 (79M 2010)

By 2030 estimated 552M will be DM

Cost of DM care = \$245 Billion (2012)



# Increasing DM Population

## Diabetes Care

DM with DFU has a 5 year mortality rate increase of 47%.

>25% of all DM will develop DFU in their lifetime

78.6M are obese (CDC/JAMA - 2012)

## Aging population (AOA/CDC)

2009: 39.6 million (13%) 65+

2030: 72 + million (20%) 65+

2050: 89 + million

# Academic Competition

<b>2015-16 Application Year</b>	<b>MD</b>	<b>DO</b>	<b>DPM*(14/15)</b>
Applicants	52,550	20,720	1194*
Admitted	20,631	6,592	674
Science GPA	3.45	3.38	3.20
Overall GPA	3.55	3.47	3.30
MCAT	28.3/31.4	26/499	21.2
<b>CSPM – 2016</b>	<b>Science</b>	<b>Overall</b>	<b>MCAT</b>
	3.14	3.3	24/497

# Earning Potential

## 2012 Report

Median: \$247K (range \$125 - \$500K) - (Pod. Management - 2012)

Median: \$119,340 (25th % - \$167,500) – (BLS - 2015)

Kaiser \$175K - \$225K (2012)

**Liability insurance: less \$10K**

## Medscape 2014 Salary/Debt Report

Average Resident's Salary (2014 Report): \$55,300.00

AAMC: Four year Cost of tuition ~\$278K (private) vs.

~\$208 (public)

# Residency Shortage—MD/DO

Surgical Residency shortage → constantly changing

Students need to do due diligence research on subject

May have to choose a specialty that is not 1st choice



# A Day in the Life of a DPM

# What Problems Do DPMs Treat?

Trauma/Fractures

Metabolic disorders e.g. Diabetes

Neurological disorders

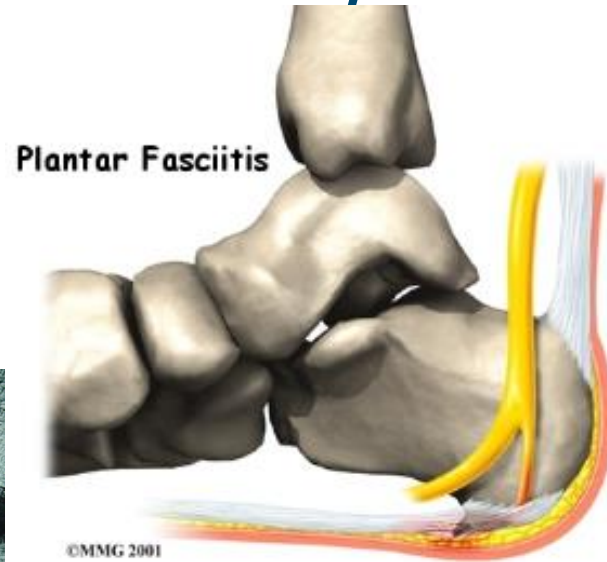
Musculoskeletal disorders

Vascular disorders

Cutaneous disorders

**“The Unhappy Foot...”**

# Neuroma/Heel Pain/Derm



# Neuroma/Heel Pain/Derm





# Neuroma/Heel Pain/Derm



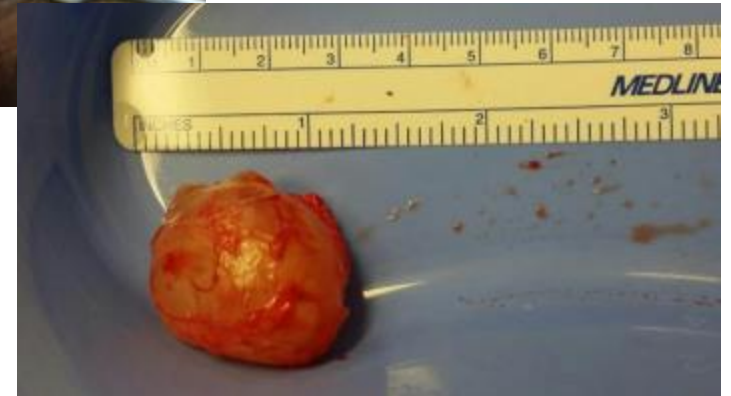
# Neuroma/Heel Pain/Derm



# Neuroma/Heel Pain/Derm



# Neuroma/Heel Pain/Derm



# Neuroma/Heel Pain/Derm



# Neuroma/Heel Pain/Derm



# Neuroma/Heel Pain/Derm



# Trauma





# Trauma



# Trauma



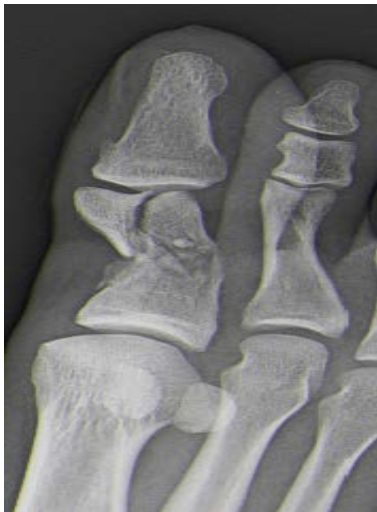
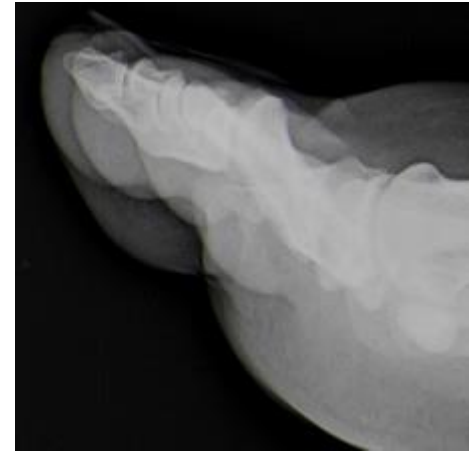
# Trauma



# Trauma



# Trauma



# Trauma



# Trauma



# DPMs Convert Unhappy Feet Into







SAMUEL MERRITT UNIVERSITY



# Questions & Answers