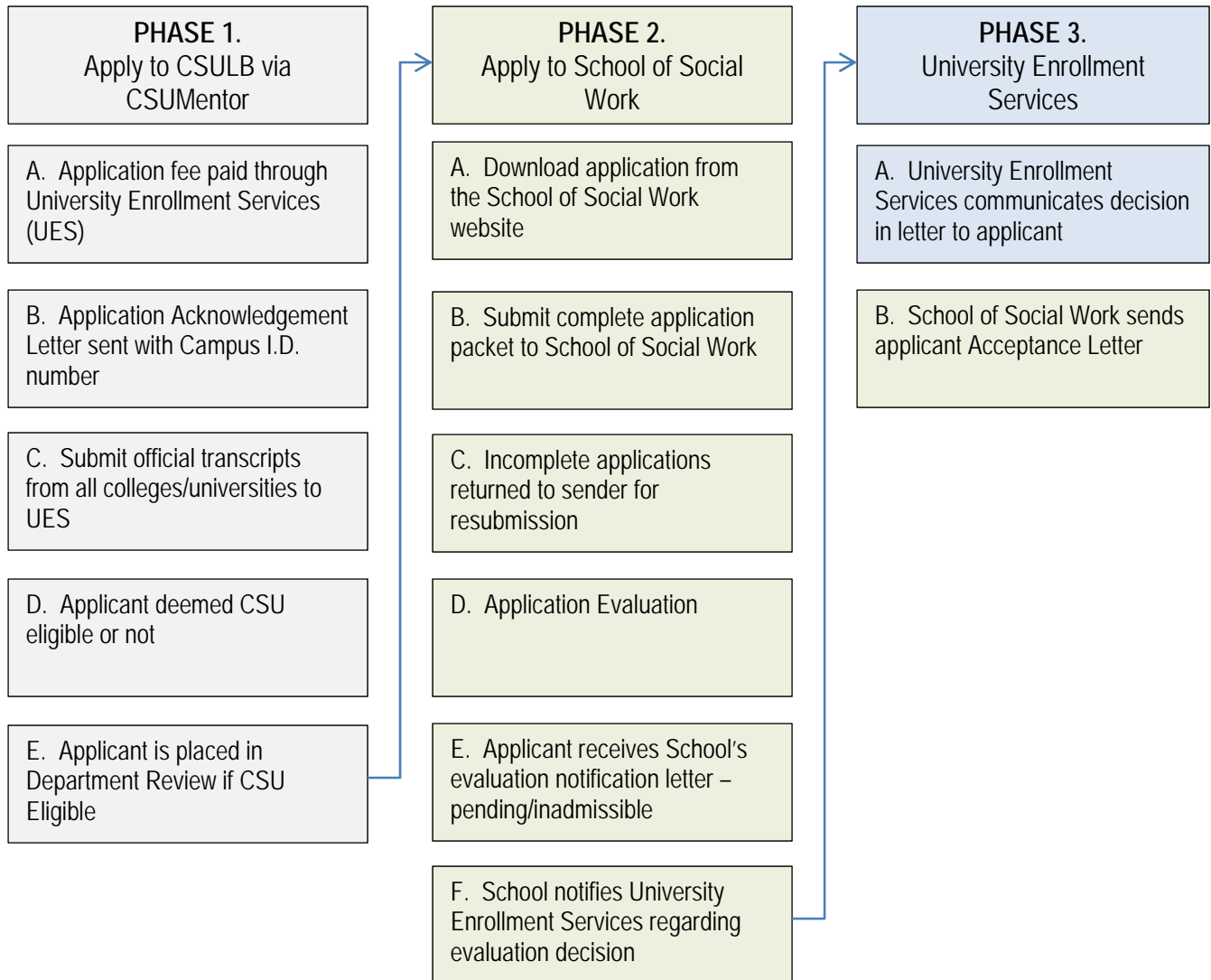


APPLICATION TO THE CSULB SCHOOL OF SOCIAL WORK:

A SEQUENTIAL THREE PHASE PROCESS



Important Items to Know:

- University applications can be submitted anytime between October 1 and February 1; however, applicants **should submit the CSUMentor application 2-3 weeks prior to February 1** to allow time to process and place in Department Review for the Social Work deadline of February 1.
- Applicants can call an automated number provided by the University to track their CSUMentor application to find out when it reaches Department Review. The automated number is 562) 985-2500.
- Applications should be submitted to the School of Social Work when an applicant receives a Campus I.D. number; however, the School will not evaluate applications until they are in Department Review. For purposes of our evaluation, official transcripts must be sent to the University Enrollment Services (Phase 1-C) **no later than March 1**, prior to fall entry.