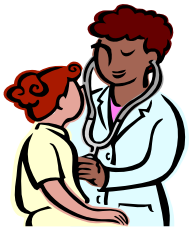
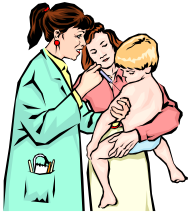


# MS Nursing Degree Information Session



## California State University Long Beach

Attn: Alison Trafas  
1250 Bellflower Boulevard  
Long Beach, CA 90840-0301  
Phone: (562) 985-4473  
Fax: (562) 985-2382  
[akliachk@csulb.edu](mailto:akliachk@csulb.edu)  
[www.csulb.edu/nursing](http://www.csulb.edu/nursing)

## California State University, Long Beach Master of Science Degree in Nursing

September 16, 2009 at 5:00-6:00 p.m.

October 21, 2009 at 5:00-6:00 p.m.

November 18, 2009 at 5:00-6:00 p.m.

Room 26

No reservation needed

### Programs Offered

- Nurse Practitioner Postmasters Certificate in Family, Pediatrics, Psych/Mental Health, Adult/Geriatric, and Women's Health
- Health Services (School Nurse) Credential Program
- Master of Science in Nursing (code NRSGMS01) Specialties include: Family, Pediatrics, Psych/Mental Health, Adult/Geriatric, and Women's Health
- Master of Science in Nursing / Master of Public Health
- Master of Science in Nursing / Master of Science in Health Care Administration
- Clinical Nurse Specialist in Adult Care: Master of Science in Nursing

### Program Admission Requirements

- A bachelor's degree in nursing preferred: A bachelor's degree in a related field will be considered;
- Current license to practice as a registered nurse in California; PHN Certificate needed for concurrent MSN/MPH program;
- Admission to graduate standing in nursing at the University;
- An upper division or graduate course in statistics (except School Nurse);
- An upper division public health nursing course if BS not in Nursing;
- An overall GPA of 2.75 or better in the last 60 units of the undergraduate BSN Program;
- Each specialty, other than School Nurse, has additional prerequisites as outlined in our application.