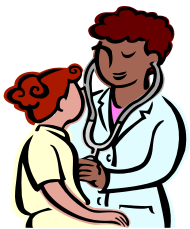
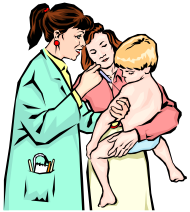


# Basic/Trimester BSN Degree Information Session



## California State University, Long Beach Bachelor of Science Degree in Nursing

February 10, 2010 at 4:30 p.m. Room CBA 139A

March 10, 2010 at 4:30 p.m. Room CBA 139A

April 14, 2010 at 4:30 p.m. Room CBA 139A

May 12, 2010 at 4:30 p.m. Room CBA 139A

**No reservation needed**

The Basic BSN program is a 6 semester full-time academic program which will prepare you to take the National Council Licensing Examination (NCLEX) to practice in California and to apply for a State of California Public Health Certificate.

### Program Admission Requirements

- Applicants must complete all prerequisites with a C or higher (a grade of C- will not be accepted). However, to apply to the program you must have a minimum GPA of 2.5 in the Natural Sciences prerequisite courses, and a minimum GPA of 2.5 in the General Education prerequisite courses.
- Applicants must meet the university's requirements for admission. Applicants must take the TEAS Test by the Nursing Application Deadline. Pre-register in the Dept. of Nursing. There is a \$35.00 charge for the test.
- For Spring 2011 admission, transfer students might not be considered due to systemwide budget issues. If we are allowed to consider transfer students, the university deadline will be August 30, 2011. For Fall 2011 admission, apply to the University by November 30, 2010. Use the Baccalaureate application form. This must be submitted, along with a \$55.00 fee to Enrollment Services at the University.
- Apply to the Department of Nursing by September 15, 2010 for Spring 2011 and February 15, 2011 for Fall 2011. This is a separate application procedure from your admission to the University.
- Cost will be approximately \$2200.00 per semester plus lab expenses. There are six semesters.

### California State University Long Beach

Attn: Monalisa Ward  
1250 Bellflower Boulevard  
Long Beach, CA 90840-0301  
Phone: (562) 985-2201  
Fax: (562) 985-2382  
mward2@csulb.edu  
[www.csulb.edu/nursing](http://www.csulb.edu/nursing)