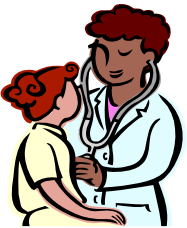
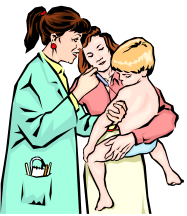
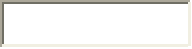


ADN to BSN Degree Information Session



California State University, Long Beach Bachelor of Science Degree in Nursing

February 25, 2009 from 4:00 to 6:00 p.m. in Nursing 26

March 25, 2009 from 4:00 to 6:00 p.m. in Nursing 26

April 22, 2009 from 4:00 to 6:00 p.m. in Nursing 26

May 20, 2009 from 4:00 to 6:00 p.m. in Nursing 26

No reservation needed.

Admission Requirements for the Department of Nursing:

- Graduation from an accredited Associate Degree Program in Nursing (ADN). If you have graduated from a RN Diploma program, you must obtain a community college evaluation of their nursing school transcripts for junior college credit before applying to the nursing program.
- Grade of "C" or better in all courses.
- Valid California RN license.
- Transfer a minimum of 56 units (70 maximum) to the University. Determination of transferable units is to be made by the Office of Admissions and Records.
- CSU, Long Beach's Writing Proficiency Exam must be completed as a University requirement the FIRST SEMESTER that you are enrolled

Admission Requirements for CSU, Long Beach Transfers:

- College grade point average of at least a 2.5
- Completed at least 30 units of courses equivalent to general education requirements with a grade of "C" or better. The 30 units must include College composition (Eng 100), oral communication (Comm. 110, 130), critical thinking (Phil. 170, Psy. 130) and 3 units of quantitative reasoning (Math 112 or statistics). Check equivalency of courses at www.assist.org
- Transfer a maximum of 70 units

Admission Procedure:

- Request official copies of transcripts at least 4 weeks prior to the application deadline. One copy of your ADN Degree to be sent to the Department of Nursing (Attn: ADN-BSN Program) and copies of all college work to be sent to the University.
- **Deadline for CSU, Long Beach Applications-**
Fall- November 30th Spring- August 31st
- **Deadline for Department of Nursing Applications-**
Fall- March 15th Spring- October 15th

California State University Long Beach

Attn: Prof. Phyllis Cooper
1250 Bellflower Boulevard
Long Beach, CA 90840-0301
Phone: (562) 985-5745
Fax: (562) 985-2382
pcooper2@csulb.edu
www.csulb.edu/nursing