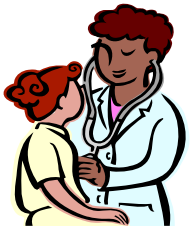
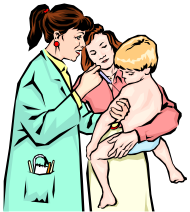


Basic/Trimester BSN Degree Information Session



California State University, Long Beach Bachelor of Science Degree in Nursing

February 13, 2008 at 4:30 p.m.

March 12, 2008 at 4:30 p.m.

April 9, 2008 at 4:30 p.m.

May 14, 2008 at 4:30 p.m.

No reservation needed--Report to Nursing, Room 17

The Basic BSN program is a 6 semester full-time academic program which will prepare you to take the National Council Licensing Examination (NCLEX) to practice in California and to apply for a State of California Public Health Certificate.

Program Admission Requirements

- Applicants must complete all prerequisites with a C or higher (a grade of C- will not be accepted). However, to apply to the program you must have a minimum GPA of 2.5 in the Natural Sciences prerequisite courses, and a minimum GPA of 2.5 in the General Education prerequisite courses.
- Applicants must meet the university's requirements for admission. Applicants must take the TEAS Test. Pre-register in the Dept. of Nursing. There is a \$30.00 charge for the test.
- For Spring 2009 admission, apply to the University by August 31, 2008. Use the Baccalaureate application form. This must be submitted, along with a \$55.00 fee to Enrollment Services at the University.
- Apply to the Department of Nursing by September 15, 2008. This is a separate application procedure from your admission to the University
- Cost will be approximately \$2000.00 per semester plus lab expenses. There are six semesters.

California State University Long Beach

Attn: Monalisa Ward
1250 Bellflower Boulevard
Long Beach, CA 90840-0301
Phone: (562) 985-2201
Fax: (562) 985-2382
mward2@csulb.edu
www.csulb.edu/nursing