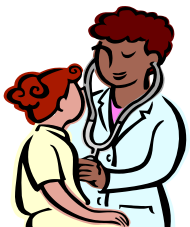
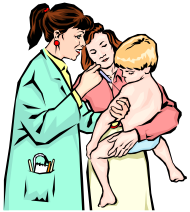


Entry Level MSN Degree in Nursing Information Session



California State University, Long Beach Entry Level Master of Science Degree in Nursing

November 30, 2009

12:00 to 1:00 LH 150

No reservation needed.

The first 16 months of this full-time academic program will prepare you to take the National Council Licensing Examination (NCLEX) to practice in California and to apply for a State of California Public Health Certificate. The final 18 months of this academic program will prepare you to work in adult acute care settings.

Program Admission Requirements

- Applicants must have a bachelor's degree from an accredited institution. (degrees in related health fields are preferred but not required)
- Applicants should have an undergraduate GPA of 3.0 or better and a GPA of 3.0 or better in all pre-requisite courses
- Take the TEAS Test. Pre-register in the Dept. of Nursing. There is a \$30.00 charge for the test.
- Applied to the University by November 30, 2009 for Fall 2010.
- Use the Graduate/Post-Baccalaureate application form. This must be submitted, along with a \$55.00 fee to Enrollment Services at the University.
- Apply to the Department of Nursing by April 2, 2010 for Fall 2010. This is a separate application procedure from your admission to the University
- Cost will be approximately \$2800.00 per semester plus lab expenses. There are approximately nine semesters.

California State University Long Beach

Attn: Monalisa Ward
1250 Bellflower Boulevard
Long Beach, CA 90840-0301
Phone: (562) 985-2201
Fax: (562) 985-2382
mward2@csulb.edu
www.csulb.edu/nursing