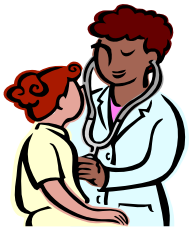
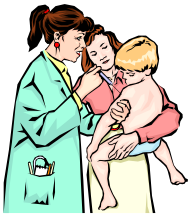


Basic/Trimester BSN Degree Information Session



California State University, Long Beach Bachelor of Science Degree in Nursing

September 9, 2009 at 4:30 p.m. Room PE 59

October 14, 2009 at 4:30 p.m. Room PE 59

November 18, 2009 at 4:30 p.m. Room PE 59

December 9, 2009 at 4:30 p.m. Room PE 59

No reservation needed

The Basic BSN program is a 6 semester full-time academic program which will prepare you to take the National Council Licensing Examination (NCLEX) to practice in California and to apply for a State of California Public Health Certificate.

Program Admission Requirements

- Applicants must complete all prerequisites with a C or higher (a grade of C- will not be accepted). However, to apply to the program you must have a minimum GPA of 2.5 in the Natural Sciences prerequisite courses, and a minimum GPA of 2.5 in the General Education prerequisite courses.
- Applicants must meet the university's requirements for admission. Applicants must take the TEAS Test by the Nursing Application Deadline. Pre-register in the Dept. of Nursing. There is a \$35.00 charge for the test.
- For Spring 2009, only continuing CSULB students will be eligible for admission as CSUs are closed for transfer. For Fall 2010 admission, apply to the University by November 30, 2009. Use the Baccalaureate application form.
- Apply to the Department of Nursing by September 15, 2009 for Spring 2010 and February 15, 2010 for Fall 2010. This is a separate application procedure from your admission to the University.
- Cost will be approximately \$2300.00 per semester plus lab expenses. There are six semesters.

California State University Long Beach

Attn: Monalisa Ward
1250 Bellflower Boulevard
Long Beach, CA 90840-0301
Phone: (562) 985-2201
Fax: (562) 985-2382
mward2@csulb.edu
www.csulb.edu/nursing