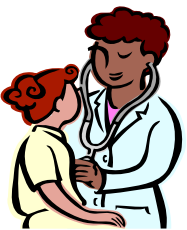
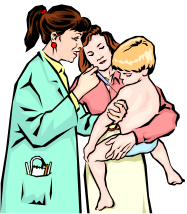


# ADN to BSN Degree Information Session



## California State University, Long Beach Bachelor of Science Degree in Nursing

September 17, 2009 from 5:00 to 7:00p.m. in Nursing 26

October 15, 2009 from 5:00 to 7:00 p.m. in Nursing 26

November 19, 2009 from 5:00 to 7:00 p.m. in Nursing 26

December 17, 2009 from 5:00 to 7:00 p.m. in Nursing 26

**No reservation needed.**

### Admission Requirements for the School of Nursing:

- Graduation from an accredited Associate Degree Program in Nursing (ADN). If you have graduated from a RN Diploma program, you must obtain a community college evaluation of their nursing school transcripts for junior college credit before applying to the nursing program.
- Grade of "C" or better in all courses.
- Valid California RN license.
- Transfer a minimum of 56 units (70 maximum) to the University. Determination of transferable units is to be made by the Office of Admissions and Records.
- CSU, Long Beach's Writing Proficiency Exam must be completed as a University requirement the FIRST SEMESTER that you are enrolled

### Admission Requirements for CSU, Long Beach Transfers:

- College grade point average of at least a 2.5
- Completed at least 30 units of courses equivalent to general education requirements with a grade of "C" or better. The 30 units must include College composition (Eng 100), oral communication (Comm. 110, 130), critical thinking (Phil. 170, Psy. 130) and 3 units of quantitative reasoning (Math 112 or statistics). Check equivalency of courses at [www.assist.org](http://www.assist.org)
- Transfer a maximum of 70 units

### Admission Procedure:

- Request official copies of transcripts at least 4 weeks prior to the application deadline. One copy of your ADN Degree to be sent to the School of Nursing (Attn: ADN-BSN Program) and copies of all college work to be sent to the University.
- **Deadline for CSU, Long Beach Applications-**  
Fall- November 30<sup>th</sup>  
**Deadline for School of Nursing Applications-**  
Fall- March 15<sup>th</sup>

## California State University Long Beach

Attn: Prof. Phyllis Cooper  
1250 Bellflower Boulevard  
Long Beach, CA 90840-0301  
Phone: (562) 985-5745  
Fax: (562) 985-2382  
pcooper2@csulb.edu  
[www.csulb.edu/nursing](http://www.csulb.edu/nursing)