

THE MASTER *of* SCIENCE *in*  
HEALTH CARE ADMINISTRATION

— ACCELERATED PROGRAM —





## LETTER *from the* DIRECTOR

Dear Prospective Applicant,

Welcome and thank you for your interest in the Master of Science in Health Care Administration Accelerated Program (MSHCA-AP) at California State University, Long Beach. These are exciting times for new health care administrators because the demand for health care administrators is expected to grow by 27 percent over the next seven years according to Department of Labor statistics. Our MSHCA-AP prepares leaders to effectively respond to the dynamic and ever-changing health care industry. These individuals will have the capacity to critically examine and evaluate issues and trends that will influence the destiny of the global health care system.

Our program is accredited by the Commission on Accreditation of Healthcare Management Education (CAHME) and has an excellent reputation in Southern California. We enjoy the strong support of administrators/CEOs at the local hospitals and managed care organizations; many who serve on our advisory board. Within the last five years our curriculum has been revised twice to reflect the dynamic nature of health care administration by including epidemiology and public health content, management information systems, and three additional units of our integrative project course.

Our broad-based approach to health care administration translates to an interdisciplinary program which combines business administration and health sciences in one degree. Our strength relies on the collaboration with health care providers and community organizations that contribute to our curriculum and classroom instruction.

I am delighted to be the Director of Health Care Administration Programs at California State University, Long Beach where we take pride in our diverse student body, relevant field research, excellence in teaching, and connectivity to the local and regional organizations where our work makes a difference. I invite you to learn more about our program by attending one of our information sessions held on Saturdays (please register at [www.uces.csulb.edu/MSHCAinfoession](http://www.uces.csulb.edu/MSHCAinfoession)) by visiting our web site [www.csulb.edu/colleges/chhs/departments/hca/](http://www.csulb.edu/colleges/chhs/departments/hca/), or by contacting us at [hca@csulb.edu](mailto:hca@csulb.edu).

On behalf of our faculty and staff, thank you for your interest in our program and I look forward to hearing from you in the near future.

Best Wishes,

Tony Sinay, PhD  
Program Director



### Top Business Graduate Schools for Physician-Executives Data collected in February 2007 for the 2006-2007 school year

Rank	Institution	Degree/ Tuition
1	University of North Carolina at Chapel Hill	MPH \$12,912
2	Trinity University	MS \$40,488
3	Virginia Commonwealth University	MSHA \$11,003
4	Carnegie Mellon University	MMM \$27,500
5	University of Colorado at Denver	MMM \$27,500
6	University of Tennessee	MBA \$52,000
7	Washington State University at Spokane	MPHA \$6,724
8	Alvernia College	MBA \$27,000
9	Auburn University	MBA \$46,875
10	University of California at Irvine	MBA \$62,648
11	University of Alabama at Birmingham	MSHA \$39,600
12	University of Washington at Seattle	MHA \$38,000
13	California State University at Long Beach	MS \$18,675
14	Harvard School of Public Health	MS \$46,000
15	Duke University	MBA \$91,950
16	Yale University	MBA \$124,000



Modern Healthcare Magazine  
Ranking methodology and explanation on page 8.



"I found the Health Care Administration Program to be one of the most rewarding experience of my professional life. Learning occurred through active classroom discussion involving a diverse group of peers, each bringing unique

perspectives and adding to the dynamics of the learning process. As a Health Care Administra-

tor, I feel the MSHCA-AP at Cal State Long Beach has given me the tools to connect my health care administration experience with the broader perspective and concerns of management. In addition, the MSHCA-AP has equipped me with added skills and knowledge, preparing me as I continue to pursue advancement opportunities within my profession."

Al Rivera  
 Director,  
 Family Medicine and Urgent  
 Care Departments  
 Kaiser Permanente, Riverside



The administration of health care organizations is one of the most complex management assignments in American society today. Whether referred to as health service or health care managers, clinical managers, or health administrators, these positions are faced with mounting challenges and roles where increasing service demands, cost containment strategies, inter-professional tensions, technological advancements, outcomes and guidelines implementation, and quality improvement mandates converge in the health care industry. Employers value experience as well as an advanced degree, so consider an educational path that allows both.

### The Program

The College of Health and Human Services and University College and Extension Services have joined efforts to offer an innovative Master of Science Degree in Health Care Administration–Accelerated Program (MSHCA–AP) to individuals who may be working full time, but who want to obtain their Masters quickly. The accelerated program follows a 10-week quarter system, offers one online and one face-to-face course each quarter, allowing students to earn their degree in as little as two years.

MSHCA-AP faculty and staff take pride in the continued development of the program. Our program is grounded in the art and science of practical “real world” application of driving complex organizations. A combination of full-time and practitioner-scholar faculty offer the perfect blend of the theory that drives the practice of management, with the art of leading change in today’s challenging health care environment.

The program embraces the use of technologies that allow us to deliver a high quality educational experience while working with students who have many demands on their schedules. MSHCA-AP graduates work as managers and consultants in hospitals, group practices and clinics, managed care organizations, (HMOs and PPOs), insurance companies, and government health agencies, and is fully accredited by the Commission on Accreditation of Health Management Education (CAHME).

The MSHCA-Accelerated Program requires 45 credit hours consisting of 13 core courses and two electives. The program offers foundation courses at the start of the program and more advanced health care-specific courses as the program progresses.

#### REQUIREMENTS:

##### YEAR I

##### First Quarter

**HCA 503 Health Care**

**Economics**

**HCA 505 Organization and Systems of Health Care**

##### Second Quarter

**HCA 502 The Health Care System**

**HSC 500 Principles of Epidemiology**

##### Third Quarter

**HCA 524 Advanced Legal and Ethical Aspects of Health Care**

**HCA 515 Advanced Financial Management in Health Care**

##### Fourth Quarter

**HCA 535 Quantitative Methods for Health Administration**

**HCA 510 Human Resources Management in Health Care**

##### YEAR II

##### First Quarter

**HCA 517 Advanced Health Care Information Systems Management**

**HCA 530 Strategic Planning and Marketing in Health Care**

##### Second Quarter

**HCA 537 Managed Care**

**HCA 550 Continuous Quality Improvement in Health Services**

##### Third Quarter

**HCA 698A Project Part 1**

**HCA 536 Hospital Management**

##### Fourth Quarter

**HCA 698B Project Part 2**

*Schedule order subject to change.*

**CORE COURSES:**

All courses are three units and are for a letter grade only.

**HCA 503 Health Care**

**Economics** *Prerequisite: ECON 101 or 300.* Application of micro-economics principles to the health care industry; the flow of funds through the health care system including physicians, hospitals, managed care, nursing home and pharmaceutical firms. Third-party payment systems, asymmetric information and behavior of health care systems.

**HCA 505 Organization and Systems of Health Care**

Analysis of operational activities and managerial functions essential to the health care delivery system, with emphasis on management and leadership influence on developing effective systems of care within various institutional arrangements.

**HCA 502 The Health Care**

**System** Overview, developmental summary of the American health care system and its driving forces. Major elements of the health care system; today's major health policy issues in a historical, economic and political context.

**HSC 500 Principles of**

**Epidemiology** *Prerequisites: HSC 301 and HSC 403.* Application of epidemiologic procedures to the understanding of the occurrence and control of infectious and chronic diseases, mental illness, environmental health hazards, accidents, and geriatric problems.

**HCA 524 Advanced Legal and Ethical Aspects of Health**

**Administration** Federal and state regulation of health care facilities, employees, patients and programs. Ethical and legal perspectives on malpractice, liability, contracts, informed consent, end-of-life decisions, reproductive health, medical records, confidentially and required disclosures.

**HCA 515 Advanced Financial Management in Health Care**

*Prerequisite: ACCT 201 or 500.* Financial environment, payment systems, discounted cash flow analysis, risk, financial statements, capital investments, and capital budgeting. Emphasis on decision making using accounting and finance theories, principles, concepts and techniques.

**HCA 535 Quantitative Methods for Health Administration**

*Prerequisite: Statistics.* Application of quantitative and operations research techniques to problems in health care settings. Exposure to decision theory and control systems. Problem-solving experiences in resource allocation, procedures, scheduling, forecasting, measurement and cybernetic control.

**HCA 510 Human Resources Management in Health Care**

Management of human resources in the health care system including human resource planning and staffing, training and development, performance appraisal, job design and analysis, and compensation.

**HCA 517 Advanced Health Care Information Systems Management**

*Prerequisite: HCA 416, 502, 530 or consent of instructor.* Broad overview of health care information systems; close examination of business needs for the information technology (IT) to deliver cost-effective quality health services.

**HCA 530 Strategic Planning and Marketing in Health Care**

*Prerequisite/Corequisite: HCA 502.* Strategic planning based on analysis of analyses of secondary quantitative and qualitative data to study changes in technological, social, political, regulatory, and competitive aspects of the health care market.

**HCA 537 Managed Care**

*Prerequisite: HCA 402 or 502.* Orientation to the organization and administration of health maintenance organizations, preferred provider organizations and related enterprises. Legal and regulatory issues, marketing, utilization management, premium rating systems, information systems, case/disease management.

**HCA 550 Continuous Quality Improvement in Health Services**

*Prerequisites: HCA 402 or 502, and HCA 465.* Administrative and professional issues to assure quality in health care: Historical beginnings; metrics and indicators; state-of-the-art practices; voluntary and governmental monitoring.

**HCA 536 Hospital**

**Management** *Prerequisite: HCA 505.* Analysis of hospitals by broad function and specific departments through cases, simulations and visits to develop familiarity with internal operations of acute care hospitals and skills in solving hospital operational problems.

**HCA 698A and B Project**

*Prerequisites: All 500-level courses, and consent of instructor.* Integration of curriculum content through critical thinking in various projects that may range from consulting projects to community based research and recommending potential courses of action.



"In the dynamic health care industry, today's administrators require extensive training and education in economic, legal, regulatory, managerial, political, historical and social aspects in order to advance. As a student, I can validate that the



MSHCA-AP at California State University, Long Beach excels in providing the essential

ingredients for preparing adult professionals to become top notch health care administrators. The program is designed for working professionals. The high caliber of students and faculty provide a challenging academic and cultural learning environment. I am fortunate and proud to be enrolled in this reputable and challenging program."

Ardel Guillamas Avelino, RN  
Clinical Specialist Manager,  
Physician Relations  
St. Mary Medical Center,  
Long Beach



CSULB offers students seeking a Master's degree in health care administration two affordable options: The traditional graduate program allows students to enter at any time, and to take as many or as few classes as they

wish. The Accelerated Program, designed for working professionals, combines online and



in-person Saturday classes and offers the opportunity to build strong collegial relationships with a cohort group who progress through the program together. Both programs are fully accredited by the Commission on Accreditation of Health Management Education (CAHME) and taught by a combination of CSULB's full time and executive faculty. MSHCA grads hold responsible and interesting administrative and managerial positions in leading health care organizations throughout southern California.

Janice Frates  
Professor, Health Care  
Administration

**Veronica Acosta-Deprez, PhD, CHES**  
**Professor, Department of Health Science**

Dr. Veronica Acosta-Deprez is a Professor in the Department of Health Science at California State University, Long Beach. She has several publications and presentations in the areas of curriculum design and development, program evaluation, issues of race, class and gender in health care and health education, international health, multicultural health education, community-based participatory program planning and evaluation, and disaster preparedness and management. Dr. Acosta-Deprez has received funding on service grants related to program assessment and evaluation, as well as research grants on health care access and community-based participatory research. Most recently, Dr. Acosta-Deprez and Dr. Gunatillake have been recipients of a HRSA grant to develop a Bioterrorism and Disaster Preparedness Curriculum to train students as volunteers, staff, and managers in the event of a disaster. She has an undergraduate degree in nursing from St. Louis University, Philippines, and MA and PhD degrees in Curriculum and Instruction specializing in educational technology and public health from the University of Wisconsin, Madison.

**Janice Frates, PhD**  
**Professor, Health Care Administration**

Dr. Janice Frates teaches undergraduate and graduate health policy, marketing and management courses in the Health Care Administration Program. She received her PhD in Public Administration from USC, with a concentration in Health Services Administration. Her recent research and publications focus on Medicaid managed care and state health policy to expand health insurance coverage for the uninsured.

Dr. Frates is also a Licensed Clinical Social Worker, and holds a MSW from the University of California. Her prior experience includes positions with Kaiser Permanente, community health groups, and hospital consulting firms.

**Brenda Freshman, PhD**  
**Assistant Professor, Health Care Administration**

Dr. Brenda Freshman began teaching organizational theory and behavior, and human resources courses at CSULB in Fall 2007. Dr. Freshman holds a BS in Psychology (UCLA), a MA in Applied Psychology (University of Santa Monica), a MS in Organizational Psychology (California School of Professional Psychology), and a PhD in Organizational Psychology (California School of Professional Psychology). Dr. Freshman's research and practice interests concentrate on how thoughts and emotions influence behavior, pro-

ductivity, and quality of life. She has been producing and delivering workshops on self-development and leadership skills, since 1993.

**Robert Friis, PhD**  
**Professor and Chair, Department of Health Science**

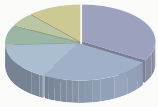
Dr. Friis holds a BA in Psychology from UC Berkeley, a MA in Educational Psychology from Teachers College, Columbia University, and a PhD in Higher Education from Columbia University. He did post graduate work in Social Epidemiology at the University of Michigan, Ann Arbor. He is a member of many professional and community and public service organizations.

**C. Kevin Malotte, PhD**  
**Archstone Endowed Chair, the Center for Health Care Innovation**

Dr. C. Kevin Malotte is the newly appointed Archstone Endowed Chair and Director of the Center for Health Care Innovation. He has over 25 years of experience designing and evaluating health behavior change interventions in clinical, community, and school settings, and has co-authored over 50 peer-reviewed publications. His research interests are STD and HIV/AIDS prevention.

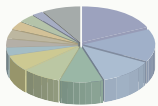
Dr. Malotte holds a BA in psychology from Chapman College, a MA in Social Psychology from Claremont Graduate School, and a MPH and DrPH from the UCLA School of Public Health.

**STUDENT PROFILE**



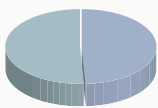
**JOB SETTING**

- 29% **HOSPITAL**
- 21% **MANAGED CARE**
- 14% **MEDICAL GROUPS**
- 7% **GOVERNMENT OFFICE**
- 5% **PRIVATE CORPORATION**
- 10% **OTHER**



**JOB TITLES**

- 15% **COORDINATOR/SPECIALIST**
- 12% **EXECUTIVES**
- 10% **PROJECT MANAGER**
- 8% **FINANCE PROFESSIONAL**
- 7% **NURSE**
- 6% **THERAPIST**
- 3% **MANAGER**
- 3% **PHARMACIST**
- 3% **RESEARCHER**
- 3% **TEACHER**
- 3% **TECHNICIAN**
- 2% **SALES**
- 7% **OTHER**



**GENDER**

- 55% **FEMALES**
- 45% **MALES**

AVERAGE AGE:  
**37**

AVERAGE GPA:  
**3.07**

**Gina Piane, DrPH**  
**Associate Professor, Department of Health Science**

Dr. Piane is a member of the CSULB faculty in the Department of Health Science. Her academic and professional background includes Maternal and Child Health, International Health, Health Behavior and Health Promotion. She was a District Health Educator and a Patient Education Coordinator for the Cook County Department of Public Health and an Environmental Health Educator for the DuPage County Health Department in Chicago. Prior to her tenure at CSULB, Dr. Piane was an Associate Professor and coordinator of the Public Health Programs at Northern Illinois University. Her current research focuses on reduction of maternal mortality in sub-Saharan Africa. Dr. Piane received her BS in Chemistry/Pre-Medicine from the University of Illinois at Chicago and her MPH and DrPH from the School of Public Health at University of Illinois at Chicago.

**Grace Reynolds, PhD**  
**Assistant Professor, Health Care Administration**

Dr. Reynolds is the Associate Director at the CSULB Center for Behavioral Research and Services since 2000. She has extensive experience in data analysis and program evaluation for a variety of health and human services organizations. She teaches undergraduate and graduate courses for the Health Care Administration Program in

analysis and evaluation and quantitative methods, as well as research methods for the Health Sciences Department.

Dr. Reynolds holds a BA in English from Macalester College, MPA and MA in Creative Writing from the University of Alaska Anchorage, and a Doctorate in Public Administration from the University of Southern California.

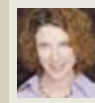
**Tony Sinay, PhD**  
**Professor and Program Director, Health Care Administration**

Dr. Sinay, who is the founder of the Accelerated Master's Program, teaches graduate and undergraduate health care economics and finance courses. Dr. Sinay's research interests include hospital mergers and closures, rural health clinics, access to care, and healthy communities. His recent publications have appeared in Social Science & Medicine, Health Services Management Research, Health Care Management Review and Journal of Health Care Finance. Dr. Sinay has served as a Fellow for the Accrediting Commission on Education in Health Services Administration (ACEHSA) and as an accreditation advisor to health care administration programs.

Dr. Sinay earned BS and MS degrees in Management Engineering from Istanbul Technical University in Turkey. He obtained a MS degree in Finance and a PhD in Economics from Saint Louis University.



“As a faculty member, I find the students in MSHCA-AP program to be intelligent, engaged and enthusiastic about learning. There is a broad spectrum of diversity from which we can gain appreciation and understanding of multiple perspectives when addressing challenging issues in contemporary health care management and leadership. I can't tell you how wonderful it is to be working with people who are so dedicated to improving health care and developing their careers in the industry.”



Brenda Freshman, PhD  
Assistant Professor, Health Care Administration

U.S. Department of Labor,  
Bureau of Labor Statistics:

- Seven of the 20 fastest growing occupations are health care related.
- Employment in the health care industry is projected to increase 22 percent through 2016.



“What primarily attracted me to the Accelerated Program was its executive faculty. The majority of professors are current and former executives of local and nationally established health care organizations. The program is intense, and appropriate for health care management professionals; exposing the student to real life situations while balancing the theoretical aspects of health care administration. The program is time and cost effective—providing an industry sanctioned curriculum designed for working health care professionals. It is an excellent opportunity to network with professional peers and faculty members. Completing this program has given me the needed skills and exposure to advance in my career.”



Anthony F. Kellogg  
IT Manager,  
Healthsmart Pacific Inc.  
First Medical Management LLC

**Rus Billimoria, MD, MPH,  
CPHQ**  
**Director of Quality Management  
LA Care Health Plan**

Dr. Rus Billimoria is Director of Health Services for Medical Network Management, a medical practice management company in Los Angeles. He obtained his medical degree from the University of Bombay, India, and also completed a post-graduate degree with a pharmacology major. Dr. Billimoria holds a MPH degree from UCLA and is a Certified Professional in Health Care Quality. His publications and conference presentations encompass a wide range of topics, from pharmacology to access to care to quality management. He teaches graduate and undergraduate quality assurance courses at CSULB.

**Thomas C. Knego, JD**  
**Associate General Counsel for  
PacifiCare Health Systems**

Tom Knego is currently Associate General Counsel for PacifiCare/United Health Care who teaches the Legal Aspects of Health Care Administration course. Mr. Knego received his law degree from California Western School of Law in San Diego in 1986 and his undergraduate degree from California State University, Fullerton in 1983. He is a member of the American Health Lawyers Association and Orange County Bar Association. He is a frequent speaker on legal issues affecting managed care organizations and health care providers.

**Jim Riedel, MBA**  
**Adjunct Professor**

James Riedel has been an adjunct professor at California State University, Long Beach for the past 16 years. He retired in 1997 after 33 years in the health care field. He is a member of the American College of Health Care Executives. He is a past member of St. Mary Health Ventures, the Hospital Council of Southern California, California Hospital Personnel Management Association, Human Resources Management Association of Southern California and Family Services of Long Beach. Mr. Riedel holds a MBA degree from Roosevelt University, Illinois and a BS degree in Marketing from St. Joseph’s College, Indiana.

**Kevin Torres, MPA**  
**VP, Information Services,  
MemorialCare Health System**

Kevin Torres graduated from California State University, Long Beach in 1986 with a BS degree, and in the spring of 1998 completed a MPA with a health care concentration. Mr. Torres is the VP of Information Services for MemorialCare with responsibilities for all five hospitals in the MemorialCare health system. He has published several Information Technology articles and co-authored an article in the International Journal of Public Administration with Dr. Frates. In addition to teaching in the Health Care Administration Program, Mr. Torres has developed an inno-

vative program for HCA bilingual bicultural students to work as part time paid interpreters at LBMMC and has arranged numerous internship opportunities for HCA students.

**Richard Tradewell, PhD**  
**Adjunct Professor**

Richard Tradewell has worked as a Public Policy Analyst since 1995. Earlier career roles include Program Evaluation, Managed Health Care, Hospital Administration and Health Services. Dr. Tradewell holds a BA degree in Political Science from California State University, Fullerton, a MPA from the University of Southern California, a MBA from Claremont Graduate University and a PhD in Political Science from Claremont Graduate University.

**Program Admission Requirements**

1. Successful completion of a baccalaureate degree at a regionally accredited college or university, with a minimum of nine units of course work to include: financial accounting, economics and statistics.
2. A cumulative grade point average of 3.0 or above on a 4.0 scale.
3. Three or more years of experience in a health care or health related organization or business environment.
4. Interview with the program director if needed.

**Application Process**

Step 1: Interested candidates should apply to *the University* first at [www.csumentor.edu](http://www.csumentor.edu).

**CSULB Application Documents**

1. CSULB Graduate Application (online at [www.csumentor.edu](http://www.csumentor.edu)).
2. Official transcripts from all colleges and universities attended (sent directly to Enrollment Services).
3. Check for \$55 application fee (or pay online).
4. TOEFL (if applicable).

Step 2: The applicant should prepare a packet which includes:

1. HCA Graduate Application (online at [www.csulb.edu/colleges/chhs/departments/hca/](http://www.csulb.edu/colleges/chhs/departments/hca/)).
2. Transcripts from all colleges and universities attended (either original or copies).
3. Three letters of recommendation, at least one of which must be from the applicant’s employer.
4. Personal statement of your interest in the program and career objectives.
5. Professional résumé.
6. GMAT/GRE score submission is recommended.

Mail the above documents to:

Dr. Tony Sinay  
 Health Care Administration  
 California State University, Long Beach  
 1250 Bellflower Blvd.  
 Long Beach, CA 90840

For more information, contact:

UCES Customer Service Center  
 University College and Extension  
 Services, CSULB  
 MSHealthCare@uces.csulb.edu  
 (800) 963-2250

Dr. Tony Sinay  
 Director, MSHCA-AP  
 tsinay@csulb.edu  
 (562) 985-5304



“The MSHCA-AP program has offered me the vehicle to re-energize my academic life. I graduated from CSULB in 1981 with a BS in Business Administration—Management. The program has given me the opportunity to refocus my understanding of business administration analytical tools and techniques to current management theory. It has also exposed me to experiences which updated my management practice from the electric typewriter age, to the application of management tools and techniques in the computer age. The cohort structure of the program has allowed me to form lifelong friendships and develop colleagues I value. From the viewpoint of a returning student, the MSHCA-AP program has offered me everything that I wished for in an academic experience and more.”



Kerry D. Wright  
 Sales Representative, American Association for Quality Health Care/American Insurance Brokers division of UNICO American Corporation.  
 Chairman of the Broad of Trustees, Community Partners at Work, Inc.

Priority code: 30828



“After working in the medical field for over 10 years, I always knew that I wanted to return to school someday to obtain my master’s degree. However, working as a full-time administrator left little time in the evenings for me to attend classes. I found it difficult to find a program that

could accommodate my work schedule until I discovered the MSHCA-AP program through CSULB.



The program was incredibly flexible as it offered classes on Saturdays and on-line classes that I could arrange around my work schedule. In addition, the instructors were incredibly knowledgeable and were familiar with the most common issues and concerns facing our health care industry today. Overall I found the program to be beneficial to my educational success while providing a foundation to advance and further my professional career.”

Matthew J. Graeser  
 Department Administrator,  
 Regional Department of Cardiac  
 Surgery  
 Kaiser Permanente, Los Angeles  
 Medical Center

### California State University, Long Beach (CSULB)

Established in 1949, CSULB is one of the flagship campuses in the 23 campus CSU system, the largest public university system in the world. Noted for excellence in many different disciplines, CSULB is rich in academic and cultural diversity with its extensive range of degree options, nationally recognized researchers, dedicated faculty members, and unique blend of ethnicities, ages, and cultures. CSULB is proud to be ranked among the “Best in the West,” by the Princeton Review—Best Colleges, 2008 edition.

### College of Health and Human Services

The College of Health and Human Services is comprised of 11 departments, four programs, and five research centers. The Health Care Administration Program is housed in the College and it is one of six in the country with both accredited bachelor’s and master’s degree programs in health care administration.

### Accreditation

The MSHCA-AP Program at CSULB is accredited by the Commission on Accreditation of Healthcare Management Education (CAHME). The CAHME is designed to foster high quality professional education for health services administration. The term “health services administration” is used as the single term which includes health care administration, health services management, hospital or other health care organization specific administration and management, health planning and evaluation, health policy and other related activities. The CAHME has been granted formal recognition by the United States Department of Education (DOE) as the only organization to accredit master’s level health administration programs in the United States and Canada. CSULB’s Health Care Administration program is one of about 75 programs accredited in the United States.

### University College and Extension Services (UCES)

Through UCES, the community outreach arm of CSULB, the university’s academic colleges such as Health and Human Services can offer the same fine degree programs in various delivery methods on a self-support basis. Many of the extra services working professionals want and need are included in UCES-administered degree programs. UCES main offices are located in the Foundation Education Center on campus.

The rankings are based on a list of programs awarding MBAs or similar degrees in courses that focus on physicians. All schools listed offer long-distance learning programs and all are accredited by the Commission on Accreditation of Healthcare Management Education. Programs were ranked on five factors: length of time to complete (the shorter the program, the higher the rank); cost of total tuition (the lower the tuition, the higher the rank); number of days students must spend on campus (the fewer days, the higher the rank); age of each program (the older the program, the higher the rank); and number of total graduates (the more graduates, the higher the rank). The five rankings were then totaled, with the lowest score getting the highest final rank. Degree offered: MPH, Master of Public Health; MS, Master of Science; MSHA, Master of Science in Health Administration; MMM, Master of Medical Management; MHA, Master of Health Administration.

Institutions’ ranking based on in-state tuition: Virginia Commonwealth University, and Washington State University at Spokane. Any of the following included in the tuition for University of Colorado at Denver, University of Alabama at Birmingham, Duke University, and Yale University: textbooks, course materials, notebook computers, meals, lodging or continuing medical education seminars. Following institution partnered with the Foundation of the Pennsylvania Medical Society to provide online education; society members receive a tuition discount: Alvernia College.

Source: *Modern Healthcare reporting*



California State University, Long Beach  
College of Health and Human Services in partnership with University College & Extension Services