

# SAVED BY THE BELL



## THE CENTER FOR BEHAVIORAL RESEARCH & SERVICES

---

2009-2010 ANNUAL REPORT

---

1090 Atlantic Avenue, Long Beach, CA 90813  
California State University, Long Beach  
Year Established 1994

# TABLE OF CONTENTS

FROM THE DIRECTOR'S DESK	1
STATEMENT OF MISSION & GOALS	2
I. UNIT PERFORMANCE & ACCOMPLISHMENTS	3
A. Performance	3
1) Goals and Objectives	3
2) Factors Affecting Unit Performance	4
Campus Agencies and Environment	4
Outside Agencies and Environment	4
B. Accomplishments	4
1) Publications	4
2) Research	6
3) Contributions to the University	9
4) Other Indicators of Success	10
II. STUDENT & FACULTY INVOLVEMENT	19
A. Faculty	19
B. Students	21
III. UNIT ACCOUNTING	23
IV. REPORTS & RECOMMENDATIONS OF REVIEW COMMITTEES	24

# FROM THE DIRECTOR'S DESK

## Educational Excellence in Service to Alleviate Human Suffering

**T**his year was a year of awards for the Center for Behavioral Research and Services. Our students won awards and our faculty won awards. The topics were as diverse as sex addiction, childhood obesity, and substance abuse. The academic departments ranged from Psychology to Health Care Administration. Our highlights include:

Our graduate student Erik D. Storholm won the thesis of the year award for his thesis titled “A Psychometric Analysis of the Compulsive Sexual Behavior Inventory.” This thesis did an analysis of the leading instrument used to assess compulsive sexual behavior and demonstrated what the cut-points should be for determining a diagnosis for this disorder. This award demonstrated the extent of the contribution to scholarship, extent of originality, quality of exposition, style, organization of contents, and intellectual grasp and interpretation of the subject.



Dennis Fisher, Ph.D., Director

One of our Associate Director Grace Reynolds' graduate students in Health Care Administration (HCA), Brandt Shirer, received special recognition for his thesis entitled, “Childhood Obesity: Effects of Physical Exercise and Dietary Behavior.” Mr. Shirer received the HCA Department Outstanding Thesis of the Year Award for 2010.

One of our continuing graduate students, Safia Baig, worked on a poster that won not just one, but two awards at the National Institute on Drug Abuse (NIDA) Blending conference. The poster is titled “Age of First Substance Use among Native



Daniel Dickerson, D.O., M.P.H., & Safia Baig

Americans in Southern California”. Her co-authors were Daniel Dickerson, Dennis Fisher, Grace Reynolds, Lucy Napper, and Christy Jocoy. This poster won the “2010 Blending Conference Grand Prize Clinical Trials Network Poster” in addition to “1st Place Diverse Populations”. This was out of 70 posters with the whole range of substance topics across the U.S. They presented the presenting author Dr. Daniel Dickerson, who is

an Inupiat Psychiatrist, with a certificate and an actual blender (this was to symbolize the NIDA Blending Conference). Dr. Dickerson was presented this award at the NIDA luncheon in front of 1300 people.

Our Director was awarded the Distinguished Faculty Scholarly & Creative Achievement Award. This award recognized accomplishments in research productivity and high visibility research contributions to the university and the Long Beach community.

Taken individually and as a group, the awards we received this year represent tremendous accomplishment toward our mission of “Educational excellence in service to alleviate human suffering.”

---

## STATEMENT OF MISSION AND GOALS

The Center for Behavioral Research and Services is a multi-function unit dedicated to behavioral research and services related to community health and social problems. The establishment of this unit was prompted and facilitated by the 1994 merger of the California State University, Long Beach-based AIDS Research and

Education Project and the Long Beach AIDS Network, a community-based HIV service organization originally founded by the City of Long Beach's Department of Health and Human Services. The overall goal of the Center is to conduct social and behavioral research on issues affecting individual and community health and well being, and to provide related services. The initial focus of the Center has been the coordination and expansion of local HIV research and services targeting under-served populations, including injection and other drug users, their sexual partners, commercial sex workers, others at risk for HIV infection, and persons with HIV. The focus has been broadened to address other community problems and issues, such as the prevention of hepatitis and other sexually transmitted diseases.

---

# I. UNIT PERFORMANCE & ACCOMPLISHMENTS

## A. PERFORMANCE

### 1) Goals & Objectives

**T**he specific purposes of the Center for Behavioral Research & Services are:

☛ To further the understanding of community health threats, such as substance use, HIV and other sexually transmitted diseases, through applied social science research. Areas of study include the psychological, behavioral and social factors related to these health threats, prevention of the threats, their relationship to other social and health problems, and their

impact on the community.

☛ To develop and evaluate the effectiveness of model programs to reduce threats to community health and well being within the Long Beach community.

☛ To increase faculty and inter-departmental involvement in community-based research.

☛ To provide mental health, social, preventive, and other supportive services to under-served people, such as persons with or at risk for HIV and their families, with an emphasis on drug users, people of color, and others whose access to such services may be limited.



Grace Reynolds, D.P.A., Associate Director

Mental Health Services  
Administration  
(SAMHSA)

**OUTSIDE AGENCIES  
AND ENVIRONMENT**

The Long Beach  
Department of Health and  
Human Services, Bureau of  
Environmental Health,  
Certificate of Small  
Quantity Generator of  
Medical Waste.

2) Factors Affecting Unit  
Performance:

**CAMPUS AGENCIES AND  
ENVIRONMENT**

Institutional Review Board (IRB)  
Protocols Approved

Protocol #09-205 “Multiple Morbidities  
Testing Program”

Protocol # 10-262 “Integrated Services  
Approach –SAF Subcontract to Substance  
Abuse and Mental Health Services  
Administration (SAMHSA)”

Protocol # 10-238 “Hepatitis A/B  
Vaccine Program”

Protocol # 10-219 “Minorities  
Overcoming Risk” (MOR) Evaluation  
SAF Subcontract to Substance Abuse and

**B. ACCOMPLISHMENTS**

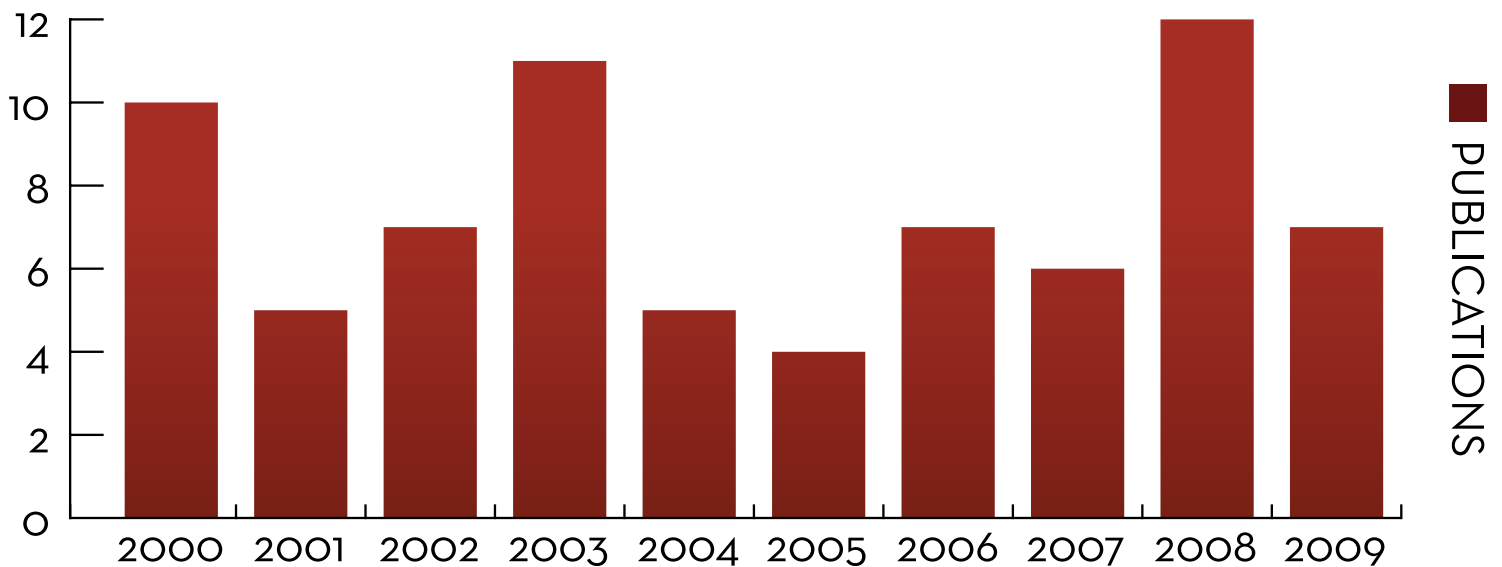
1) Publications

**2010**

Fisher, D. G., Napper, L. E., Reynolds,  
G. L., & Johnson, M. E. (in press).  
The Risk Behavior Assessment. In T.  
D. Fisher, C. M. Davis, W. L. Yarber,  
& S. L. Davis (Eds.), *Handbook of  
sexuality-related measures*. New York:  
Taylor & Francis.

Fisher, D. G., Reynolds, G. L., &  
Napper, L. E. (2010). Use of crystal  
methamphetamine, Viagra, and sexual  
behavior. *Current Opinion in Infectious  
Disease*, 23(1), 53-6. DOI:10.1097/  
QCO.0b013e328334de0b.

## Publications by Calendar Year



Johnson, M. E., Pratt, D. K., Neal, D. B., & Fisher, D. G. (2010). Drug users' reliability of self-reported alcohol use on the Risk Behavior Assessment. *Substance Use and Misuse, 45*(6), 925-935.

Marsh, K. A., Reynolds, G. L., Rogala, B. E., Fisher, D. G., & Napper, L. E. (2010). Who chooses a rapid test for HIV in Los Angeles County, California? *Evaluation and the Health Professions, 33*(2), 177-196. DOI: 10.1177/0163278710361929

Napper, L. E., Fisher, D. G., Reynolds, G. L., & Johnson, M. E. (2010). The effect of recall period on HIV risk behavior self-report reliability. *AIDS and Behavior, 14*(1), 152-161. DOI 10.1007/s10461-009-9575-5.

Napper, L. E., Fisher, D. G., Johnson, M. E., Wood, M. M. (2010). The

reliability and validity of drug users' self reports of amphetamine use. *Addictive Behaviors, 35*(4), 350-354. doi:10.1016/j.addbeh.2009.12.006

Napper, L. E., Reynolds, G. L., & Fisher, D. G. (in press). Measuring perceived susceptibility, perceived vulnerability and perceived risk of HIV infection. In F. Columbus (Ed.), *Psychology of Risk Perception*. Hauppauge, NY: Nova Science Publishers.

Reynolds, G. L., Fisher, D. G., Napper, L. N., Fremming, B. W., & Jansen, M. A. (in press). Heterosexual anal sex reported by women receiving HIV prevention services in Los Angeles County. *Women's Health Issues*.

Storholm, E. D., Fisher, D. G., Reynolds, G. L., Napper, L. E., Morrissey, T. A., & Kochems, L. M. (2010). Hepatitis vaccination of men who have sex with

men at gay pride events. *Prevention Science* 11(2), 219-227. DOI: 10.1007/s11121-009-0164-7

## 2009

Fisher, D. G., Reynolds, G. L., Ware, M. R., & Napper, L. E. (EPub March 28, 2009). Methamphetamine and Viagra use: Relationship to sexual risk behaviors. *Archives of Sexual Behavior*. DOI: 10.1007/s10508-009-9495-5.

Fisher, D. G., Pilon, D., Hershberger, S. L., Reynolds, G. L., & Davis, M. (2009). Psychometric properties of an assessment for mental health recovery programs. *Community Mental Health Journal*, 45(4), 246-250. DOI: 10.1007/s10597-009-9213-8.

Jaffe, A., Pedersen, W. C., Fisher, D. G., Reynolds, G. L., Hershberger, S. L., Reise, S., & Bentler, P. (2009). Drug use, personality and partner violence: A model of separate, additive, contributions in an active drug user sample *The Open Addiction Journal*, 2, 39-47. DOI: 10.2174/1874941000902010039.

Napper, L., Harris, P. R., & Epton, T. (2009). Developing and testing a self-affirmation manipulation. *Self and Identity*, 8, 45-62.

Reynolds, G. L. (2009). Drug treatment program compliance and resistance

activities during implementation of California's Proposition 36. *Journal of Health and Human Services Administration*, Summer 2009, 51-72.

Reynolds, G. L., Fisher, D. G., & Napper, L. E. (2009). Behavioral health. In B. Freshman, L. Rubino & Y. R. Chassaikos (Eds.), *Collaboration across the disciplines*. Sudbury, MA: Jones and Bartlett.

Singh-Carlson, S., Cheffer, N., & Reynolds, G. L. (2009). Health on Wheels: A nursing approach to uninsured children. *International Journal of Environmental, Cultural, Economic and Social Sustainability*, 6(3), 169-179.

## 2) Research

### CONFERENCE PRESENTATIONS

#### 2009

Cervantes, R. C., Córdova, D., Parra-Cardona, J. R., Fisher, D. G., & Napper, L. (2009, October). *Gender and age differences in Latino adolescent acculturation stress and mental health*. Poster session presented at the Annual Conference of the National Hispanic Science Network on Drug Abuse, Miami, FL.

Napper, L. E., Garcia, E. P., Fisher, D. G., & Reynolds, G. L. (2009, October). *A comparison of direct and*

*indirect measures of optimistic bias for Human Immunodeficiency Virus infection.* Abstract presented at the Society of Medical Decision-Making Conference, Los Angeles, California

Reynolds, G. L., Vaughn, S., Fisher, D. G., & Napper, L. E., (2009, October). *Mental health and psychiatric services utilization by HIV-positive individuals*



Jefferson Wood, Research Technician

*enrolled in substance abuse treatment.* Abstract presented at the Addiction Health Services Research Conference, San Francisco, California.

Vaughn, S., Napper, L. E., Garcia, E. P., Van Loon, M., Sibal, S., Reynolds, G. L. & Fisher, D. G. (2009, October). *Physical, sexual and emotional abuse among Hispanics and African Americans living with HIV.* Abstract presented to the National Minority AIDS Council's 2009 U.S.

Conference on AIDS, San Francisco, California. (<http://www.nmac.org/index/2009-usca>)

## 2010

Cheffer, N., Singh-Carlson, S., & Reynolds, G. L. (2010). *Health on Wheels: A nursing approach to uninsured children.* Abstract accepted for virtual

presentation at the Sixth International Conference on Environmental, Cultural, Economic, and Social Sustainability, Cuenca, Ecuador.

Dickerson, D., Fisher, D. G., Reynolds, G. L., Napper, L. E., Baig, S., & Jocoy, C. (2010). *Age of first substance use among Native Americans in Southern California.*

Abstract accepted to the American Public Health Association Annual Meeting, Denver, CO.

Dickerson, D., Fisher, D. G., Reynolds, G. L., Napper, L. E., Baig, S., & Jocoy, C. (2010). *Age of first substance use among a sample of Native American youth.* Abstract presented at the National Institute on Drug Abuse (NIDA) Blending Conference in Albuquerque, NM.

Fisher, D. G., Reynolds, G. L., & Napper, L. E. (2010). *A comparison of*

- methamphetamine assessments for craving and dependence.* Abstract accepted for presentation at the American Psychological Association Annual Meeting, San Diego, CA.
- Jaffe, A., Latimore, A., Storholm, E. D., Napper, L. E., Reynolds, G. L., & Fisher, D. G. (2010). *Sexual addiction: Impulsivity, compulsivity, sensation seeking or a mix of all?* Abstract accepted for presentation at the American Public Health Association Annual Meeting, Denver, CO.
- Napper, L. E., Fisher, D. G., Jones, R., Lamphear, V., Fletcher, K., Immel, C., Hadder, J., & Mason, L. (2010). *Factor structure of the CRTES-R in Lugandan.* Abstract accepted for presentation at the 118th Annual APA Convention.
- Napper, L. E., Fisher, D. G., & Reynolds, G. L. (2010). *Perception of HIV risk and feelings of vulnerability.* Abstract accepted for presentation at the American Psychological Association Annual Meeting, San Diego, CA.
- Napper, L. E., Fisher, D. G., Reynolds, G. L., & Romo, K. (2010). *HIV medication adherence among Latino and African American clients accessing mental health and substance abuse services.* Abstract accepted for oral presentation at the American Public Health Association annual meeting, Denver, CO.
- Napper, L. E., Fisher, D. G., Reynolds, G. L., Ybarra, J., Rogala, B. (2010). *Validity of the Addiction Severity Index in a substance abuse treatment sample with psychiatric comorbidity.* Abstract accepted for oral presentation to the American Public Health Association annual meeting, Denver, CO.
- Reynolds, G. L., Fisher, D. G. & Napper, L. E. (2010). *Personality indicators of women who report heterosexual anal sex.* Abstract accepted to the American Psychological Association Annual Meeting, San Diego, CA.
- Reynolds, G. L., Fisher, D. G., & Napper, L. E. (2010). *Assessment of risky practices associated with hepatitis B and C and HIV using the Blood-borne Virus Transmission Risk Questionnaire (BBV-TRAQ).* Abstract accepted to the American Psychological Association Annual Meeting, San Diego, CA.
- Reynolds, G. L., Fisher, D. G., Napper, L. E. & D'Anna, L. (2010, July). *Heterosexual anal sex is associated with HIV seropositivity, sexual and drug risk-taking behaviors and cognitions in Women.* Abstract accepted as poster presentation at the International Conference on AIDS, Vienna, Austria.
- Reynolds, G. L., Fisher, D. G., & Napper, L. E. (2010). *Receptive anal sex is associated with HIV seropositivity in*

women. Abstract accepted for oral presentation at the American Public Health Association Annual Meeting, Denver, CO.

Storholm, E. D., Fisher, D. G., Napper, L. E., Reynolds, G. L., & Halkitis, P. N. (2010). *A psychometric analysis of the Compulsive Sexual Behavior Inventory*. Poster presented at the Association for Psychological Science Annual Meeting, Boston, MA.

Wood, J. L., Fisher, D. G., Napper, L. E., & Reynolds, G. L. (2010, November). *Macros for managing messy data: Handling duplicate participants, and making fuzzy matches across multiple data sets*. Abstract accepted for presentation at the Western Users of SAS Software, Inc., San Diego, CA.

## GRANT PROPOSALS SUBMITTED

Improving Measurement, grant submitted to the National Institutes of Health, Grand Opportunity, \$1,339,989. Principal Investigator: Dennis G. Fisher, Ph.D.

Health Disparities in Young Minority Women, grant submitted to the National Institutes of Health, \$996,155, Principal Investigator: Grace L. Reynolds, D.P.A.

Inter-rater Reliability of a mental health recovery assessment for older adults, \$125,000, Principal Investigator: Grace L. Reynolds, D.P.A.

Rapid Test Screening, grant submitted to the National Institutes of Health, \$949,698, Principal Investigator: Dennis G. Fisher, Ph.D.

Underreported Sex in Women, grant submitted to the California HIV/AIDS Research Program, University of California Office of the President, \$199,690, Principal Investigator: Grace L. Reynolds, D.P.A.

HIV and STD Testing in Minority Women, Kaiser Permanente Foundation of South Bay, \$5,000, Principal Investigator: Dennis G. Fisher, Ph.D.

## 3) Contributions to the University

Dr. Fisher serves as a member of the Institutional Review Board.

Dr. Fisher serves as a member of the Master of Arts, Research (MA-R) program Admissions Committee.

Dr. Fisher is on the Beach Campus Emergency Response Team (CERT).

Dr. Fisher served on the search committee for the Associate Vice President for Research and Extramural Funding

CBRS provided an internship to an undergraduate studying in the Department of Microbiology.

Dr. Reynolds served on the College

of Health and Human Services Graduate Council.

Dr. Reynolds served on the Health Care Administration Program Graduate Admissions Committee.

Dr. Reynolds served as faculty advisor to



Crystal Rivera, Undergraduate Student

The National Society of Collegiate Scholars, CSULB Chapter.

### 3) Other Indicators of Success

#### **FUNDED RESEARCH AND SERVICE PROJECTS**

##### **Multiple Morbidities Testing Project (Funded by the Office of**

##### **AIDS Programs and Policy, County of Los Angeles, Contract # PH000828)**

Principal Investigator: Dennis G. Fisher, Ph.D.

##### The Multiple Morbidities Testing

Project (MMTP) is funded by the County of Los Angeles Office of AIDS Programs and Policy (OAPP). The purpose of the study is to assess the co-infection rates of HIV and other infectious diseases (hepatitis A, B, C, syphilis, gonorrhea, and Chlamydia) among injection drug users (IDUs), men who have sex with men (MSM), and

other behavioral risk groups in the greater Long Beach and Los Angeles County areas. The study was re-funded for two years beginning in January 2007, then funded again for three years beginning July 1, 2009. We have tested over 2700 individuals representing the Behavioral Risk Groups identified and targeted by OAPP for services, including gay men, injection drug users, women at sexual risk, and transgenders.

Up to three vials of blood are drawn from each participant by a phlebotomist certified by the National Accrediting Agency for Clinical Laboratory Sciences (NAACLS). One vial is submitted to a state-certified laboratory for testing for hepatitis A, B, C, and syphilis antibodies. The others are prepared on site and transported for storage to our serum bank where they are maintained in a -85°F freezer for the purpose of future hepatitis-related research. Urine specimens are collected for testing for gonorrhea and Chlamydia. In addition to the blood and urine testing, we obtain

several measures of risk behavior on each participant, including the Risk Behavior Assessment (RBA), the Designer Drug Trailer (DDT), and psychological assessments such as the Sexual Addiction Screening Test (SAST), the Blood-borne Virus Transmission Assessment Questionnaire (BBV-TRAQ) and the Coping Strategies Indicator.

CBRS operates a mobile unit that brings these multiple morbidity testing and counseling services to drug users both in and out of treatment. This mobile program has been operating and receiving



Multiple Morbidities Testing Program at the Long Beach Gay Pride Festival

funding from L.A. County since 1993. It routinely provides services to drug treatment programs within the south bay areas of Los Angeles County and neighborhoods with a high prevalence of drug abuse. Several studies have been published using data from this program (Klahn, Fisher & Wood, 2001; Fisher, et al. 2006; Marsh, et al., 2010, Reynolds, et al., 2005, and Reynolds, et al., 2008).

**MHO-Subcontract with the Substance Abuse Foundation of Long Beach, Inc.**

**Substance Abuse and Mental Health Services Administration (SAMHSA)**

Principal Investigator: Dennis G. Fisher, Ph.D.

This project is a subcontract to evaluate the program for integrating mental health services and drug abuse treatment services provided by the Substance Abuse Foundation of Long Beach, Inc. (SAF). The evaluation includes baseline and follow-up data collection on HIV-positive persons recruited into the SAF program. All participants are evaluated using the computerized Diagnostic Interview Schedule (CDIS), the Beck Depression

Inventory, the Symptom Checklist – 90, the Substance Abuse and Mental Illness Symptoms Screener, the Medical Outcomes Study HIV Health Survey, the Addiction Severity Index, and the Client Satisfaction Survey. Process measures for the evaluation include the number of persons screened for a DSM-IV diagnosis, the number of clients who have a treatment plan developed, the number of clients who have an individualized care plan developed, the number of clients whose files are reviewed at weekly case management meetings, and the number of clients who complete at least one client satisfaction survey. The outcomes for the project include: quality of life will be improved among program participants; there will be decreased depression among participants, decreased mental health symptomatology among program participants, increased health behaviors, including screening for hepatitis and sexually transmitted infections, and improved/stabilized housing among participants. The outcome for caregivers of participants will be reduced stress and burden and improved quality of life. The evaluation also meets federal requirements for Government Performance and Results Act (GPRA) and/or National Outcome Monitoring Survey (NOMS) as per the

funding agency.

**MOR—Minorities Overcoming Risk--Subcontract with the Substance Abuse Foundation of Long Beach, Inc.**

**Substance Abuse and Mental Health Services Administration (SAMHSA)**

Principal Investigator:

Dennis G. Fisher, Ph.D.

The MOR Subcontract with Substance Abuse Foundation of Long Beach (SAF) is the initiation of the “Minorities Overcoming Risk” (MOR) project to engage 800 at-risk adult and young adult (ages 18-24) African-American and Latino/Hispanic men and women per year (4,000 over the 5-year project period)--including injection and non-injection drug and alcohol users and their partners, men who have sex with men (MSM) and women with children-- into expanded and enhanced, culturally and linguistically relevant substance abuse treatment, outreach and pre-treatment services in Long Beach, CA. CBRS provides street outreach to the targeted minorities from its HIV mobile testing van, engaging an additional 400 individuals per year (2,000 over the

5-year project period) into HIV rapid testing, pre-and post-test counseling; pre-treatment (HIV, hepatitis and substance abuse education), and facilitating their direct entry into substance abuse treatment services at SAF. CBRS also conducts program data collection and evaluation.

**TEAM—Taking Extra Aim at Meth--Subcontract with the Substance Abuse Foundation of Long Beach, Inc.**

**Substance Abuse and Mental Health Services Administration (SAMHSA)**

Principal Investigator: Dennis G. Fisher, Ph.D.

This project is a comprehensive effort by Substance Abuse Foundation to increase the availability of community-based methamphetamine (meth) treatment for economically disadvantaged and homeless people in Long Beach, CA.- -a city highly impacted by poverty and drug use, which is increasingly devastated by the crystal-meth epidemic.

Culturally and linguistically competent staff and outreach workers will engage and retain the diverse target population of homeless and economically



Negar Khermand, Undergraduate Student

disadvantaged men and women, ages 18 to 65, that use/abuse methamphetamine, including an increasing number of Hispanics and African Americans.

SAF, a state-licensed and nationally accredited non-profit drug treatment center with 18 years experience, is significantly increasing access to evidence-based, professional methamphetamine treatment services for an additional 96 low-income methamphetamine users per year, or 288 over the 3-year project period. The treatment services consist of three months of intensive residential treatment, followed by an additional three months of less intensive treatment.

CBRS's evaluation of the program includes on-site data collection using the Risk Behavior Assessment (RBA) and the Addiction Severity Index (ASI), and instruments to measure methamphetamine craving and dependence. CBRS also conducts follow-up interviews with participants at 6 and 12 months post-treatment.

### **Research Infrastructure for Minority Institutions (RIMI)**

Principal Investigator: F. King Alexander, Ph.D., Administrator: C. Kevin Malotte, Dr.P.H., Faculty Development Core Director: Dennis G. Fisher, Ph.D.

The faculty development core is one of three cores funded by the RIMI grant from the National Center for Minority Health and Health Disparities. Three faculty members were funded to conduct pilot projects under the direction of the Faculty Development Core Director (D. Fisher). These projects are:

**Dr. Alex Washington, Ph.D. PI (Social Work).** The goal of Dr. Washington's study, "Exploring an HIV Status Awareness Model for Black MSM" (HSAM), is: a) to develop a culturally sensitive web-based behavioral video-vignette intervention to increase HIV testing and HIV-status awareness among Black MSM who are not aware of their HIV-status, using focus groups methods. Data from the focus groups will be used to develop an intervention to motivate HIV testing and increase HIV-status awareness among unknown-status Black MSM. The specific aims are: Aim 1: to explore issues concerning HIV testing; Aim 2: to explore barriers to HIV testing and HIV-status awareness among sexually active (both known-status and unknown-status) Black MSM; Aim 3: to explore the feasibility of a web-based behavioral video-vignette intervention to increase HIV testing and HIV-status awareness. A rigorously evaluated web-based video-vignette based approach to encourage unknown-status Black MSM to seek HIV testing and known status may impact the racial/ethnic HIV health disparity that exists.

**Dr. Jeff Davis, Ph.D. PI (Sociology).** The goals of Dr. Davis's project are to:

(1) Estimate a model of racial and ethnic group differences in high-risk sexual and reproductive behavior as a function of group differences in uncertainty. The model to be developed and tested in this project attributes the higher prevalence of risky behaviors found in minority groups, especially in young adulthood, to unpredictable futures associated with the lower social status of minority groups. This project is specifically intended to quantitatively evaluate the role of uncertainty in the onset and prevalence of various forms of high-risk behaviors including sex, reproduction, and drug use.

(2) Measure uncertainty using the Uncertain Futures Index (UFI). Studies of the effects of uncertainty have been largely restricted to laboratory experiments. Testing for the influence of uncertainty on high-risk health behaviors requires a non-experimental approach. The UFI will be developed to test theories of uncertainty using non-experimental methods.

(3) Conduct preliminary study of the UFI instrument using secondary data from the National Educational Longitudinal Survey (NELS), 1988-2000. The NELS is a longitudinal panel

survey of American youth, conducted by the U.S. Department of Education. It contains data on a range of sexual and reproductive behaviors. It also includes a small number of variables on alcohol use and smoking.

(4) Conduct a pilot study to collect original data on sexual and reproductive behavior among young adults in a local community. A pilot study will be



Bitra Ghafari, Ph.D., Associate Professor

conducted to examine racial and ethnic differences in uncertainty and the consequences for racial and ethnic differences in high-risk health behaviors. The pilot study will lay the groundwork for a large-scale, longitudinal analysis of the effects of uncertainty on racial and ethnic group differences in high-risk behaviors.

**Bitra Ghafari, Ph.D. PI. (Advanced Studies in Education & Counseling).** Generalized anxiety disorder (GAD) is a debilitating psychological disorder characterized by chronic, pervasive, and uncontrollable worry (American Psychiatric Association, 1994). Along with posttraumatic stress disorder (PTSD) and major depressive disorder (MDD), GAD is one of the most common psychological reactions in the

aftermath of traumatic events and disasters. Studies focused on civilian trauma exposed populations suggests that ethnic/racial group differences may be independently associated with the development of mental health issues after trauma exposure. No study to date has examined the development or

maintenance of exaggerated and uncontrollable worries above and beyond PTSD and depression in vulnerable communities who have experienced traumas, for whom long-term effects are more likely, such as the poor, racial/ethnic minority groups, those who are less acculturated, or urban recent immigrants.

The proposed research project addresses the important need to understand the prevalence of GAD after a traumatic event as well as risk and protective factors for the development of post-trauma psychopathology in a diverse, low-income, minority, urban population. By collecting data from a primarily low-income, diverse sample of participants, we will be able to answer key questions about the prevalence of GAD as well as the role of ethnicity and acculturation in the expression of health symptoms, mental health service utilization, and barriers to care.

**HIV Risk Behaviors and Depression among Drug Users (National Institute on Drug Abuse 1 R03 DA018601-01)**

Principal Investigator: Mark E.



Lucy Napper, Ph.D., Post-Doctoral Research Fellow

Johnson, Ph.D., Co-Principal Investigator: Dennis G. Fisher, Ph.D.

The purpose of this grant is to conduct secondary data analysis on depression data collected from 700 injection drug users who participated in a clinical trial of needle exchange compared to legal pharmacy sales in Anchorage, Alaska. The instruments involved include the Beck Depression Inventory and the Center for Epidemiological Studies Depression sub-scale. Analysis will focus on developing models of depression and co-morbidities in active injection drug users, and their impact on HIV/AIDS risk behaviors.

**IRT for HIV Risk Perception, National Institute on Drug Abuse, National Institutes of Health**

Post doctoral fellow: Lucy L. Napper, Ph.D.; Faculty Advisor: Dennis G. Fisher, Ph.D.

People's perceptions of risk form an important factor in many models of health behaviors, including those aiming to understand HIV risk. At present, however, there is no recognized reliable measure of perceived HIV risk and a dearth of research examining the



HEP Team at the Long Beach Gay Pride Festival

roles of different aspects of risk perceptions. The purpose of the present study is to develop a reliable measure of perceived risk of HIV that incorporates different dimensions of perceived risk, including perceived likelihood, susceptibility and emotional responses. Item Response Theory (IRT) will be employed to develop an empirically derived and reliable measure, initially in sample of drug users. In a follow-up study, IRT will be used to evaluate the new measure in a second high-risk population of men who have sex with men. Cross-sectional data, employing the new measure, will be used to assess the relationship between health risk behaviors and perceived HIV risk.

Longitudinal data will explore whether risk perceptions of drug users predict later health behaviors. The development of a reliable measure of HIV risk perceptions, that incorporates different aspects of risk perceptions, could both inform interventions targeting HIV risk behaviors and theories aiming to understand these behaviors.

### **Hepatitis A and B vaccination at Gay Pride**

CBRS was able to provide the Twinrix® combination vaccination for hepatitis A and B to 240 at-risk men at the Long Beach Gay Pride Festival in May, 2010. This collaborative effort

included the help of nursing faculty and students from CSULB as well as outreach assistance provided by Hep Team LA and GlaxoSmithKline (GSK). Special thanks to Professors Savitri Singh-Carlson and Sharon Konrad of the CSULB School of Nursing.

### **Kaiser South Bay Project**

Principal Investigator:

Dennis G. Fisher, Ph.D.



Karen Gould, Provost CSULB; Dennis G. Fisher, Director CBRS; Gerry Riposa, Dean CLA; F. King Alexander, President CSULB

The purpose of the project is to expand the capacity of CBRS to be able to offer HIV, hepatitis, and other Sexually Transmitted Infection (STI) early detection to low income, primarily African American and Latino women who perceive themselves to be at risk and who do not currently qualify under our existing funding mechanisms. This will help to build self-reliance among these women by addressing the personal health component of their lives. This project serves women in Service Planning Areas 8 (South Bay) and 6 (South) of Los Angeles County.

### **Other Accomplishments**

CBRS received a third subcontract with the Substance Abuse Foundation of Long Beach, Inc. for the evaluation of the Taking Extra Aim at Meth (TEAM) program funded by the Center for Substance Abuse Treatment of the Substance Abuse and Mental Health Services Administration.

CBRS received funding from the National Center for Minority Health and Health Disparities for the Faculty Development Core of the Research Infrastructure for Minority Institutions center grant.

# II. STUDENT & FACULTY INVOLVEMENT

## A. FACULTY

### **Peter Bentler, Ph.D.**

*Professor*

Psychology,  
College of Letters & Science  
University of California, Los Angeles

### **Jeff Davis, Ph.D.**

*Assistant Professor*

Sociology,  
College of Liberal Arts  
California State University, Long Beach

### **Vincent J. Del Casino Jr., Ph.D.**

*Associate Professor*

Geography,  
College of Liberal Arts  
California State University, Long Beach

### **Bitu Ghafori, Ph.D.**

*Associate Professor*

Advanced Studies in Education  
and Counseling,  
College of Education  
California State University, Long Beach

### **Carol Itatani, Ph.D.**

*Professor*

Microbiology,  
College of Natural Sciences  
and Mathematics  
California State University, Long Beach

### **Christy Jocoy, Ph.D.**

*Assistant Professor*

Geography,  
College of Liberal Arts  
California State University, Long Beach

### **Kevin Malotte, Dr.P.H.**

*Professor*

Health Care Administration,  
College of Health and Human Services  
California State University, Long Beach

### **William Pedersen, Ph.D.**

*Associate Professor*

Psychology,  
College of Liberal Arts  
California State University, Long Beach

**Grace Reynolds, D.P.A.**

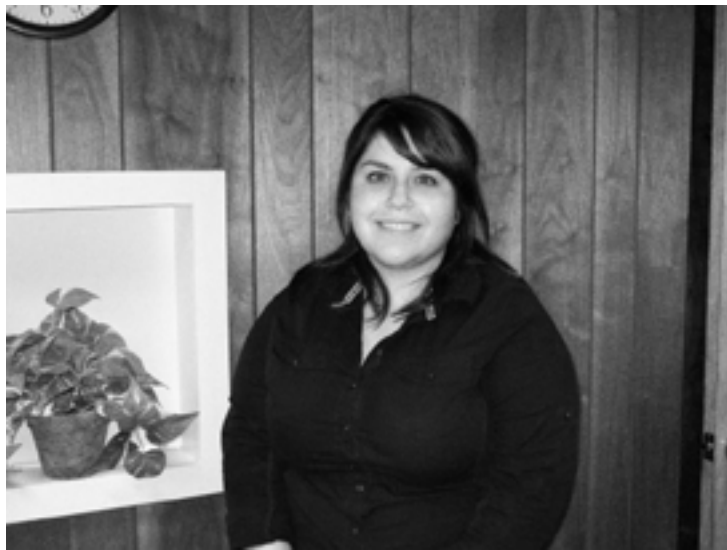
*Assistant Professor*

Health Care Administration,  
College of Health and Human Services  
California State University, Long Beach

**Savitri Singh-Carlson, Ph.D.**

*Assistant Professor*

School of Nursing,  
College of Health and Human Services  
California State University, Long Beach



Belen Barragan, Graduate Student

**Guido Urizar, Ph.D.**

*Assistant Professor*

Psychology,  
College of Liberal Arts  
California State University, Long Beach

**T. Alex Washington, Ph.D.**

*Associate Professor*

Social Work,  
College of Health and Human Services  
California State University, Long Beach

**Bianca Wilson, Ph.D.**

*Assistant Professor*

Psychology,  
College of Liberal Arts  
California State University, Long Beach

**B. STUDENTS**

During the past year, CBRS provided employment or internship experiences for a number of students.

**Lawrence Alexander**

*Graduate Student,*

Advanced Studies in Education  
and Counseling

California State University, Long Beach

**Sagar Amin**

*Undergraduate Student,*

Biochemistry

California State University, Long Beach

**Safia Baig**

*Graduate Student,*

Psychology

California State University, Long Beach

**Belen Barragan**

*Graduate Student,*

Advanced Studies in Education  
and Counseling

California State University, Long Beach

**Brent Fremming**

*Graduate Student,*  
Psychology  
California State University, Long Beach

**Eileen Garcia**

*Graduate Student,*  
Psychology  
California State University, Long Beach

**Narina Grove**

*Undergraduate Student,*  
Biology  
California State University, Long Beach

**Adi Jaffe**

*Doctoral Student,*  
Psychology  
University of California, Los Angeles

**Stephanie Johnson**

*Graduate Student,*  
Psychology  
California State University, Long Beach

**Negar Khermand**

*Undergraduate Student,*  
Microbiology  
California State University, Long Beach

**Kim Marsh**

*Undergraduate Student,*  
Microbiology  
California State University, Long Beach

**Crystal Rivera**

*Undergraduate Student,*  
Human Development  
California State University, Long Beach

**Gabriel Rojas**

*Graduate Student,*  
Social Work  
California State University, Long Beach

**John Valenzuela**

*Graduate Student,*  
Social Work  
California State University, Long Beach

**Juliana Ybarra**

*Graduate Student,*  
Psychology  
California State University, Long Beach

**Senior Research Fellows**

**Richard C. Cervantes, Ph.D.**

*Chief Executive Officer*  
Behavioral Assessment Inc.  
Los Angeles, CA

**Daniel Dickerson, D.O., M.P.H.**

Integrated Substance Abuse Programs  
University of California, Los Angeles

**Post-Doctoral  
Research Fellow**

**Lucy Napper, Ph.D.**